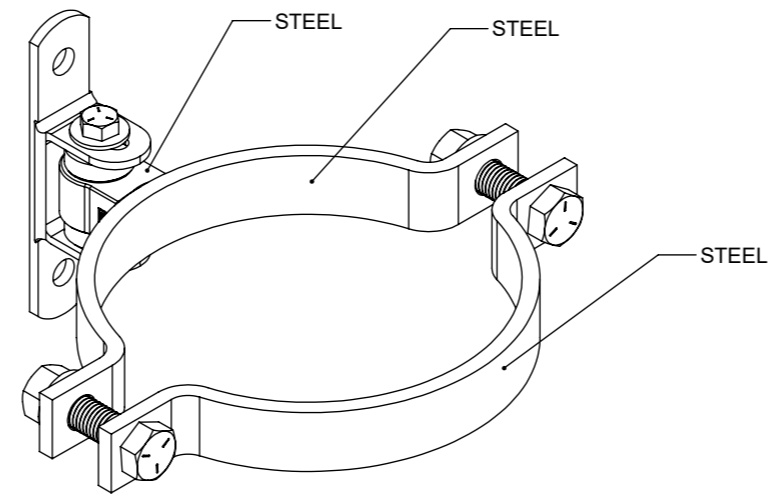
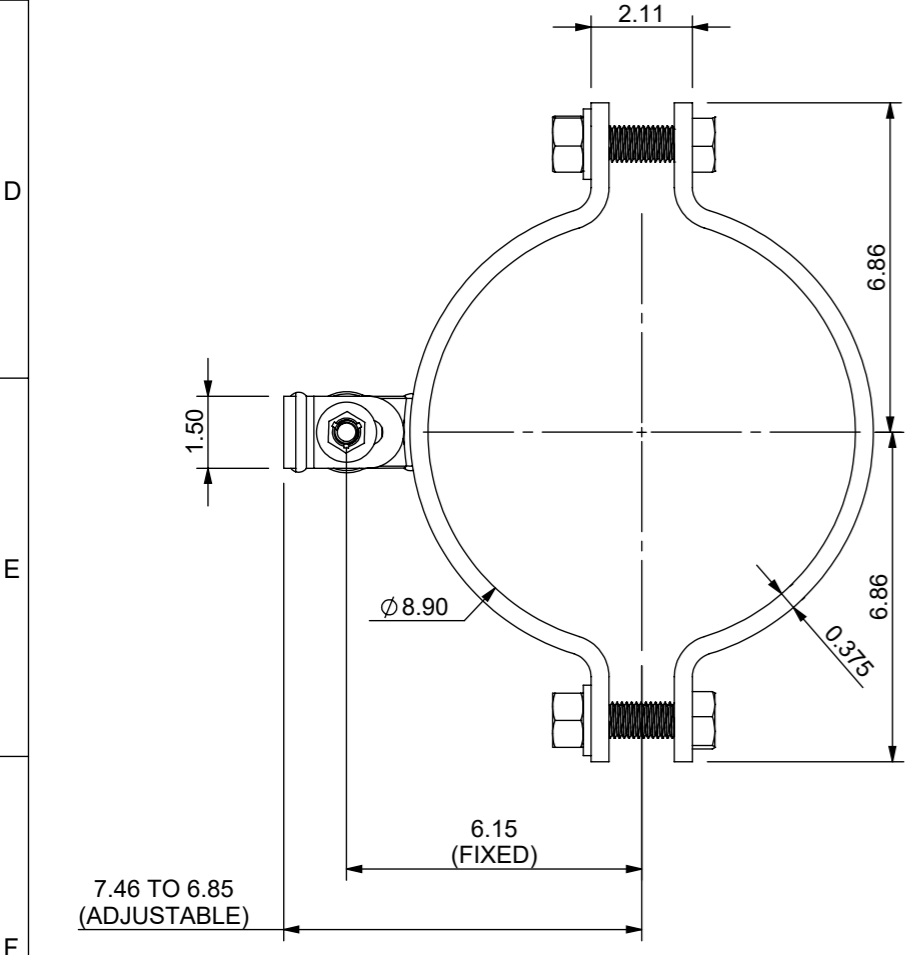
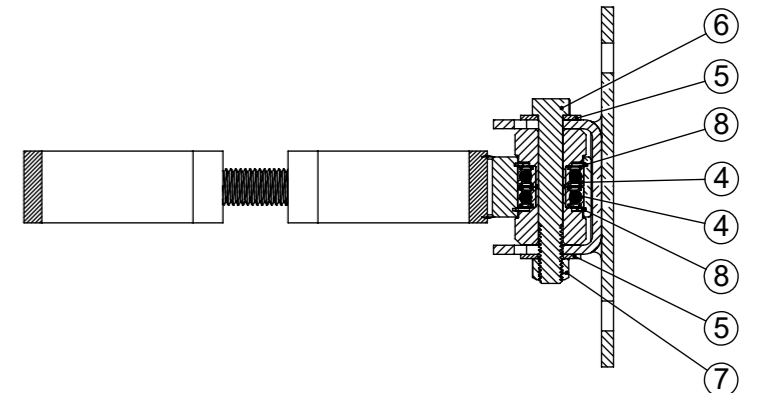
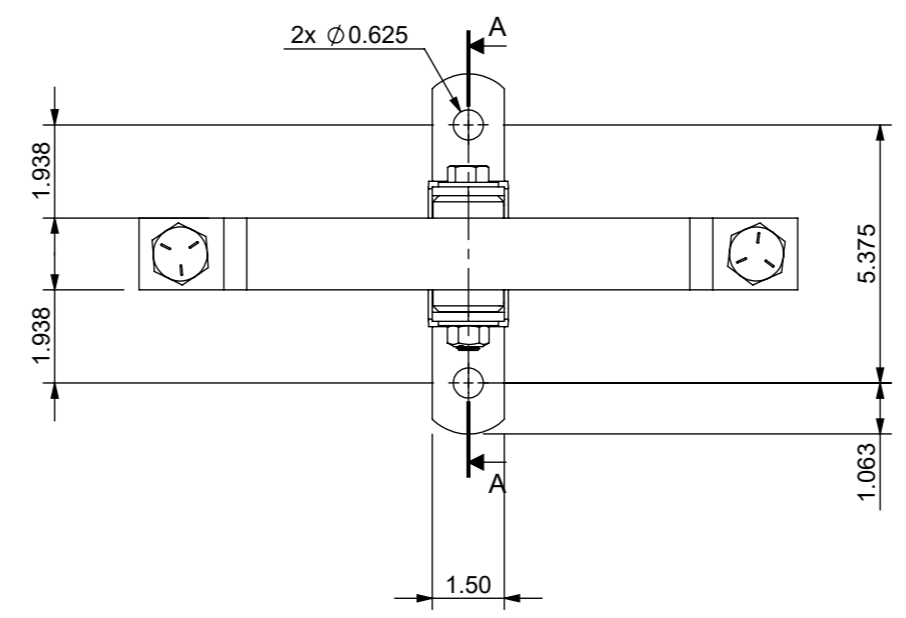
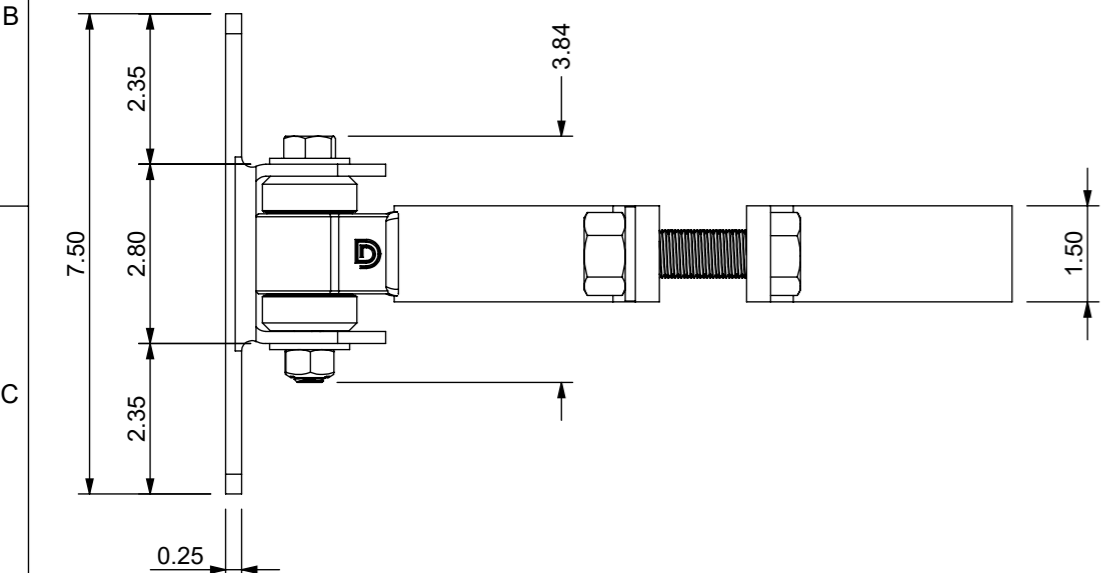


ASSEMBLY PARTS LIST						
ITEM NO.	DESCRIPTION	PART NUMBER	MATERIAL	QTY	FINISH	DRAWING
1	8 INCH ROUND BOLT ON BODY	CI2054-1	SEE DRAWING	1	ZINC PLATE, TYPE III, .0003" THICK, BLUE CHROMATE CONVERSION COATING	04-0215
2	PLATE WELDED WITH HINGE YOKE	CI3700-4	SEE DRAWING	1	ZINC PLATE, TYPE III, .0003 THICK, BLUE CHROMATE CONVERSION COATING	04-0165
3	HINGE SPACER	CIP250	12L14 STEEL, CF ROUND	2	ZINC PLATE, TYPE III, 0.0003 THICK, BLUE CHROMATE CONVERSION COATING	04-0159
4	RADIAL BALL BEARING - HIGH TEMPERATURE	CIP150H	VARIOUS	2	NONE	04-0221
5	FLAT WASHER - 1/2"	CIP200	STEEL	2	CLEAR ZINC	
6	HEX HEAD BOLT - GRADE 5 - HALF-13 X 3.5	CIP160	STEEL GRADE 5 OR BETTER	1	CLEAR ZINC	
7	STOVER LOCK NUT - 1/2"	CIP210	STEEL	1	CLEAR ZINC	
8	INTERNAL RETAINING RING	CIP140	STEEL	2	BLACK	

REVISION TABLE				
REV.	DESCRIPTION	DRAWN	DATE	APPROVED
A	ECN007.19: PRODUCTION RELEASE	SC	20/12/2018	SC



CRITICAL INSPECTION DIMENSIONS ARE CIRCLED AND NUMBERED WITH #
 ALL DIMENSIONS WITHOUT TOLERANCE FOR REFERENCE ONLY
 REFER TO CAD MODEL AS MASTER
 SOURCE: PURCHASED

PART WEIGHT +/-5%: 2711.20 LBS

UNLESS OTHERWISE SPECIFIED DIMENSIONS ARE IN INCHES TOLERANCES ARE: DECIMALS ANGLES FRACTIONS .XX = ±.01 ±1° ±1/64 .XXX = ±.005		PROPRIETRY AND CONFIDENTIAL THE INFORMATION CONTAINED IN THIS DRAWING IS THE SOLE PROPERTY OF D&D TECHNOLOGIES P/L. ANY REPRODUCTION IN PART OR AS A WHOLE WITHOUT THE WRITTEN PERMISSION OF D&D TECHNOLOGIES P/L IS PROHIBITED. D&D TECHNOLOGIES PTY LTD Unit 6, 4-6 Aquatic Drive, Frenchs Forest, NSW, Australia Ph: +61 2 9975 4500 Fax +61 2 9975 4501 Email: scosby@ddtech.com.au Website: www.ddtech.com.au		DO NOT SCALE DRAWING		A	
DRAWN	20-12-18	DWG NO. 05-0299		TITLE: 8 INCH ROUND BOLT ON BA		3RD ANGLE PROJECTION	
R&D	20-12-18	P/N: CI2054		SCALE: N/A		SOLIDWORKS <input checked="" type="checkbox"/>	
QA		MATERIAL: SEE PARTS LIST		OTHER		PROENGINEER <input type="checkbox"/>	
				SHEET 1 OF 1		A3	