



ARCHITECTURAL
IRON DESIGNS, INC.

— YOUR IMAGINATION, FORGED HERE —

ORNAMENTAL METALS



- 140-141** Post Tops by Grande Forge
- 142** Steel Railheads & Post Tops
- 143** Post Tops & Plugs
- 144-147** Cast Iron Spears, Finials & Plugs
- 148-150** Picket Collars for Round & Square Bar
- 151-157** Shoes, Base Plates & Flanges
- 158** Forged Cross Bars
- 159-163** Rosettes & Quatrefoils
- 164** Greek Key Castings
- 165-166** Forged Steel Scrolls
- 167-173** Leaves, Roses & Grapes
- 174-175** Balls, Circles & Ovals
- 176-178** Cages & Other Decorative Elements
- 179-181** Home Decor Collection
- 182** Flower Panels
- 183-184** Double Faced Steel Castings
- 185** Ornamental Cast Iron Panels & Brackets
- 186** Ornamental Iron Valances & Inserts
- 187-188** Ornamental Iron Picket Castings
- 189** Decorative Circles & Washers/Grates, Vents & Grilles
- 190** Furniture Legs
- 191-201** Ornamental Iron Castings
- 202-203** Ornamental Iron Crowns & Top Scrolls
- 204** Gate Frame Ends & Shaped Gate Frame Tops
- 205-210** Readymade Gates by RikFer



ORNAMENTAL
METALS

T: 908.757.2323 • F: 908.757.3439
AISALES@ARCHIRONDESIGN.COM
ARCHIRONDESIGN.COM/ORNAMENTALMETALS

POST TOPS BY GRANDE FORGE

All measurements height x width.

Finials come with polished and lacquered brass base or 24-carat gilded and lacquered "G". **Equipped with an M10 threaded rod.** Items for indoor use only.

ALSO AVAILABLE IN THESE FINISHES*



TBL30*

5-1/2" x 4" Ø
2-1/8" Ø base

TBL 30 / TBL 30 G

This gleaming crystal sphere makes for a genuine heirloom. Of an exceptional lead content (30 %).



TBL40*

5-1/2" x 4" Ø
2-1/8" Ø base

TBL 40 / TBL 40 G

Solid lead-crystal (24%) sphere hand-made, with dull cutted parts.



TBL12*

5-1/2" x 4" Ø
2-1/8" Ø base

TBL 12 / TBL 12 G

Hand cut lead-crystal sphere.



TBL10*

4-3/4" x 3-1/2" Ø
2-1/8" Ø base

TBL 10 / TBL 10 G

Mouthblown lead crystal globe, "crackled" effect.



TBL37*

5-1/4" x 4" Ø
2-1/8" Ø base

TBL 37 / TBL 37 G

Glass blown by STEINMETZ



TBL20*

5-1/2" x 4" Ø
2-1/8" Ø base



AMETHYSTE

TBL57*

5-1/4" x 3-3/4" Ø
2-1/8" Ø base



RED JASPER

TBL56*

5-1/4" x 3-3/4" Ø
2-1/8" Ø base



TOPAZ

TBL35*

5-5/8" x 3-7/8" Ø
2-1/8" Ø base



AMBER

TBL36*

5-1/4" x 3-11/16" Ø
2-1/8" Ø base

TBL 35 / TBL 35 G - TBL 36 / TBL 36 G

Glass blown by STEINMETZ



ONYX GREEN (vert)

TBL53-GO*

5-1/4" x 3-3/4" Ø
2-1/8" Ø base



LABRADORITE

TBL53-LA*

5-1/4" x 3-3/4" Ø
2-1/8" Ø base



TIGER EYE

TBL53-TE*

5-1/4" x 3-3/4" Ø
2-1/8" Ø base



ONYX GREEN (vert)

TBL53*

5-1/4" x 3-3/4" Ø
2-1/8" Ø base



ONYX BROWN (brun)

TBL54

5-1/2" x 4" Ø
2-1/8" Ø base

ALL DIMENSIONS ARE APPROXIMATE.

POST TOPS BY GRANDE FORGE

ALSO AVAILABLE IN THESE FINISHES*



All measurements height x width.

Finials come with polished and lacquered brass base or 24-carat gilded and lacquered "G". **Equipped with an M10 threaded rod.** Items for indoor use only.



TCARB-G*

4-3/4" x 3-1/2" Ø
2-1/8" Ø base



TBL70*

5-1/4" x 4" Ø
2-1/8" Ø base



MALACHITE MOSAIC

TBL60*

5-1/4" x 3-3/4" Ø
2-1/8" Ø base



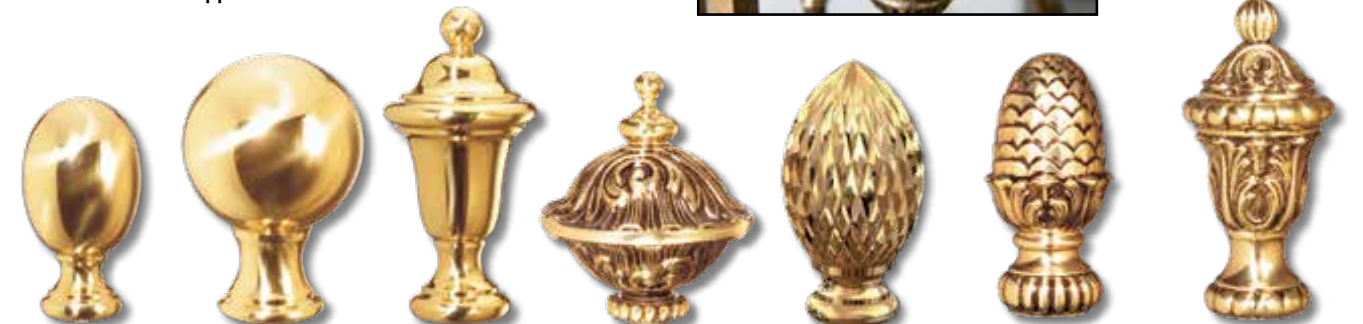
Base of finial showing M10 hole.
Grande Forge finials are supplied with the threaded rod.



ALSO AVAILABLE IN THESE FINISHES*



All finials below are supplied with M10 Threaded Rod



TBL2*

3-3/4" x 2"
1-3/8" Ø base

TBL6*

4-1/2" x 3-1/8"
1-7/8" Ø base

TBL7*

5-1/2" x 2-3/4"
1-7/8" Ø base

TBL5*

4-5/16" x 4" Ø
1-9/16" Ø base

TBL8*

5-5/8" x 3" Ø
1-15/16" Ø base

TBL3*

4-15/16" x 2-1/16"
2" Ø base

TBL9*

5-3/8" x 2-3/4"
1-13/16" Ø base

ALL DIMENSIONS ARE APPROXIMATE.

Brass finials. Delivered "Antique Bronze" hand-patinated and lacquered.

STEEL RAILHEADS AND POST TOPS

Item has 3/8" threaded hole

All measurements height x width.



3526

6" x 2 1/4"
1 3/4" sq. base



1-165

11 1/16" x 4 3/4"
1 1/8" Ø base



1-64

9 1/16" x 8 1/4"
2 3/8" Ø base



80/7

4 3/4" x 1 1/4"
3/4" sq. base



80/5

6 3/8" x 1 1/2"
1 1/4" sq. base



80/6

7 1/2" x 2"
1 1/2" sq. base



80/8

3" x 1 3/4"
3/4" Ø base



82/5

5" x 2 3/8"
1 5/16" Ø base



81/1

7 1/2" x 3 9/16"
3/4" Ø base



81/2

6 3/16" x 2 3/4"
5/8" Ø base



81/3

5 1/4" x 2 3/8"
1/2" Ø base



1-220

5 1/2" high
1/2" sq. base



1-220-2

5 1/2" high
5/8" sq. base



1-220-4

5 1/2" high
3/4" sq. base



1-220-5

5 1/2" high
1" sq. base



82/4

5" x 2 3/4"
3/4" Ø base

These ball finials are hand forged. No two will look alike.



SF0250300

3 3/8" (85mm)
2 3/16" Ø (55mm) base



SF0250310

3" (75mm)
2 3/16" Ø (55mm) base



SF0250320

2 3/16" (55mm)
1 3/4" Ø (45mm) base



SF0250325

2" (50mm)
1 1/2" Ø (37mm) base



SF0250330

1 3/4" (45mm)
1 3/16" Ø (30mm) base



1-319

2-3/16" x 1-7/16"



83/11

8 1/4" x 4 3/8"
1 1/4" Ø base



82/10

6 3/16" x 3 1/2"
1 1/4" sq. base



82/9

4 3/4" x 2 7/16"
1" sq. base



81/5

5 1/2" x 2"
3/4" base



81/6

5" x 1 1/2"
5/8" base



81/7

3 1/2" x 1"
1/2" base



17/10

6" x 1 3/4"
3/4" base



84/3

6 3/8" x 1"
1" sq. base



83/5

9 1/8" x 3 1/4"
2" base
1 1/16" sq. stem



83/10

8 5/8" x 3 1/4"
2" Ø base



82/7

8 1/4" x 2 7/16"
1 1/2" Ø base



87/2

3 1/4" x 1 1/2"
1 1/4" Ø base



87/3

4" x 2"
2" Ø base



82/2

5 1/2" x 2 3/8"
1 1/4" Ø base



87/4

3 1/2" x 2"
2" Ø base



87/5

7 1/4" x 4"
4" Ø base

ALL DIMENSIONS ARE APPROXIMATE.

POST TOPS AND PLUGS

CAST STEEL STARTING POST FINIALS

Not suitable for hot dip galvanizing.
All have M10 threaded hole



ONYX

FOT13

2 3/4" W x 5 3/8" H
1 13/16" base

TB200

3 1/8" W x 4 3/4" H
2" base

TP54

3 3/4" W x 5 1/4" H
2 3/16" base

TB300

4 5/16" W x 6 1/16" H
2 1/8" base

PRESSED POST CAPS



TUBE SIZE	STEEL 19 Ga.	GALVANIZED STEEL 20 Ga.	ALUMINUM 18 Ga.	BRASS 18 Ga.	COPPER 18 Ga.
5/8"	SPC-0058	GPC-0058	APC-0058	BPC-0058	CPC-0058
3/4"	SPC-0075	GPC-0075	APC-0075	BPC-0075	CPC-0075
1"	SPC-0100	GPC-0100	APC-0100	BPC-0100	CPC-0100
1-1/4"	SPC-0125	GPC-0125	APC-0125	BPC-0125	CPC-0125
1-1/2"	SPC-0150	GPC-0150	APC-0150	BPC-0150	CPC-0150
2"	SPC-0200	GPC-0200	APC-0200	BPC-0200	CPC-0200
2-1/2"	SPC-0250	GPC-0250	APC-0250	BPC-0250	CPC-0250
3"	SPC-0300	GPC-0300	APC-0300	BPC-0300	CPC-0300
4"	SPC-0400	GPC-0400	APC-0400	BPC-0400	CPC-0400
6"	SPC-0600	GPC-0600	APC-0600	BPC-0600	CPC-0600
8"	SPC-0800	GPC-0800	APC-0800	BPC-0800	CPC-0800

CAST IRON BALL CAPS



108 - fits over 1"	1 1/4" W x 2 1/2" H	1 1/8" ball
109 - fits over 1 1/4"	1 3/4" W x 2 3/4" H	1 1/4" ball
110 - fits over 1 1/2"	2" W x 2 7/8" H	1 1/4" ball
118 - fits over 2"	2 1/2" W x 3 3/4" H	1 3/4" ball
121 - fits over 2 1/2"	3" W x 4 1/4" H	2" ball
120 - fits over 3"	3 1/2" W x 4 3/4" H	2 1/4" ball
119 - fits over 4"	4 3/8" W x 5 1/2" H	2 3/4" ball
816 - fits over 6"	6 1/2" W x 7 1/2" H	3 3/4" ball

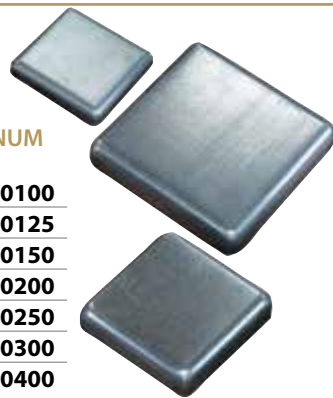
CAST IRON PYRAMID CAPS



805 - fits over 1"	1" H
806 - fits over 1 1/2"	1" H
807 - fits over 2"	1 1/4" H
808 - fits over 3"	1 1/2" H
809 - fits over 4"	1 1/2" H
815 - fits over 5"	1 3/4" H
811 - fits over 6"	1 1/2" H
814 - fits over 8 1/2"	2 1/2" H

PRESSED FLAT TOP POST CAPS

TUBE SIZE	STEEL 19 Ga.	ALUMINUM 18 Ga.
1"	SPC-620100	APC-620100
1-1/4"	SPC-620125	APC-620125
1-1/2"	SPC-620150	APC-620150
2"	SPC-620200	APC-620200
2-1/2"	SPC-620250	APC-620250
3"	SPC-620300	APC-620300
4"	SPC-620400	APC-620400



CAST IRON PINEAPPLE POST CAPS



1400 - fits over 1"	1 3/4" W x 3" H
1401 - fits over 1 1/2"	2" W x 3 1/2" H
1402 - fits over 2"	2 7/8" W x 4 3/8" H
1403 - fits over 3"	3 5/8" W x 6" H
1404 - fits over 4"	4 5/8" W x 7 1/4" H

STEEL POST COVERS



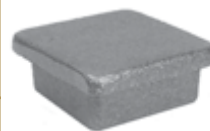
12-100-3 - fits over 3 1/4"
12-100-2 - fits over 4"
12-100 - fits over 6"

CAST IRON BALL CAPS FOR SCH. 40 PIPE



BC114 - 2" W x 2 3/4" H	for 1 1/4" pipe
BC112 - 2 3/4" W x 3 3/8" H	for 1 1/2" pipe

CAST IRON PLUGS



8611 - fits in 2" sq.	3/4" H, plug
8613 - fits in 1 1/2" sq.	9/16" H, 11 Ga. plug



116
fits in 1" sq.
1" H



113 - fits in 1" sq.
13/16" H
114 - fits in 1 1/4" sq.
13/16" H

PLASTIC PLUGS



PC20 - For 7/8" tube
PC25 - For 1" tube
PC30 - For 1-3/16" tube
PC40 - For 1-1/2" tube
PC50 - For 2" tube
PC100 - For 4" tube

ALL DIMENSIONS ARE APPROXIMATE.

CAST IRON SPEARS AND FINIALS

FITS OVER 1/2" SQUARE



8602

2" W x 5 3/8" H



8604

1 1/8" W x 4" H



9319

2 1/8" W x 4" H



656

3 1/2" W x 5 1/4" H



656-S

3 3/8" W x 5 1/4" H



853

2 1/2" W x 4 3/8" H



659

3 3/4" W x 5" H



667

2 1/4" W x 4 1/2" H



667-XS

2 1/4" W x 4" H



812

1" W x 2" H



655-A

3 1/2" W x 6 1/2" H



9-A

1" W x 4 3/8" H



9-X

1" W x 4 1/4" H



9-XS

1" W x 3 1/2" H



848

4" W x 7 3/4" H



649

2 1/4" W x 4 3/8" H



649-XS

2" W x 4" H



8832

2 5/8" W x 4 3/8" H



666

2 3/4" W x 6" H



8821

2 1/2" W x 4" H

FITS OVER 1/2" Ø



8603

2" W x 4 1/4" H



8113

1 1/8" W x 3 1/2" H



8114

1 1/4" W x 2 1/2" H



8115

1 1/4" W x 2" H



8116

3 3/4" W x 4 3/8" H



8117

2 5/8" W x 4 3/4" H



651

4" W x 5 1/4" H



9-R

1 3/4" W x 4 1/4" H



9-RS

1 3/8" W x 3 3/8" H



9511

2" W x 6 1/2" H



647

2 1/4" W x 5" H

ALL DIMENSIONS ARE APPROXIMATE.

CAST IRON SPEARS AND FINIALS

FITS OVER 5/8" SQUARE



668-H

3" W x 7¼" H



9-XS-5/8

1⅞" W x 4⅞" H



649-H

2⅞" W x 4¾" H



9-H

1⅞" W x 4⅞" H



656-H

3½" W x 6" H



659-H

3¼" W x 5" H



840

2¼" W x 5" H



853-H

3" W x 5½" H



7009

2¾" W x 5¾" H



8111

1¼" W x 4½" H



8858

3" W x 5" H



656-HS

3⅝" W x 5⅝" H



8832-H

3" W x 5" H

FITS OVER 3/4" SQUARE



9-Y

1⅞" W x 6" H



668-Y

3" W x 7¼" H



9-XS-3/4

1¼" W x 4¾" H



649-Y

2¾" W x 5½" H



656-Y

4¼" W x 7" H



659-Y-S

4-3/4" W x 3" H



659-Y

4" W x 6¼" H



671-AF

2" W x 5" H



834

1¼" W x 2¼" H



853-Y

3¼" W x 6⅞" H



8834

4" W x 6" H



670-Y

3⅞" W x 6" H



9541

1" W x 4⅞" H



9320

5¼" W x 11" H



8934

2¾" W x 9½" H



840-Y

2" W x 5" H



8832-Y

3⅝" W x 6⅞" H



888-YSQ

2½" W x 6" H



656-YS

3½" W x 5¼" H



8804

3½" W x 6¼" H

fits over
¾"

ALL DIMENSIONS ARE APPROXIMATE.

CAST IRON FINIALS AND PLUGS

FITS OVER 3/4" Ø



9-RXL

2½" W x 5" H



668-R

3" W x 7¾" H



888-Y

2¾" W x 6¾" H

FITS OVER 1" SQUARE



662

2¾" W x 8" H



664

4¼" W x 10" H



669

2¼" W x 8" H



810

1½" W x 2¼" H



9516

2¾" W x 5¾" H



861-Z

3¾" W x 6¼" H



657-ZR

3" W x 5¾" H



8280

2¾" W x 7½" H



8802

5½" W x 9½" H



9-Z

2½" W x 8" H



671-XL

2¼" W x 8" H



8832-Z

4½" W x 7¾" H



649-Z

3¾" W x 6¾" H



853-Z

4¼" W x 8½" H



FITS OVER SQUARE BAR



8111-XL

2" W x 9" H
fits over 1¼" sq.



9-XL

2" W x 6" H
fits over 1¼" sq.



9352

2¾" W x 5" H
fits over 2" sq.



657-L

4½" W x 8¾" H
fits over 1¼" Ø



657-Z

4" W x 6" H
fits over 2½" Ø

HOLLOW
fits over

1¾"

HOLLOW
4" base fits
flat or over

2½"

PLUGS FIT IN SQUARE TUBE



670-CF

4¼" W x 7" H
1¾" deep plug
fits in 1" sq.



117

1¼" W x 3¼" H
1¼" deep plug
fits in 1" sq.



649-X

2¼" W x 4½" H
¾" deep plug
fits in 1" sq.



661

1½" W x 4½" H
1" deep plug
fits in 1" sq.



7-X

1½" W x 2¼" H
¾" deep plug
fits in 1" sq.



9-J

2" W x 4¼" H
¾" deep plug
fits in 1" sq.



8910

1¾" W x 4" H
⅝" deep plug
fits in 1" sq.

ALL DIMENSIONS ARE APPROXIMATE.

CAST IRON FINIALS WITH SOLID BASE



844

2¼" W x 5½" H
solid ½" sq. base



846

1⅝" W x 6" H
solid ¾" Ø base



9671

2⅝" W x 9⅝" H
solid ⅞" Ø base



8806

1¼" W x 5¼" H
solid 1" Ø base



657-XS

1¼" W x 2¼" H
solid 1" Ø base



8-X

1¼" W x 3" H
solid 1" sq. base



7-BALL

1¼" W x 2½" H
solid 1" sq. base



660-XL

2⅝" W x 5¼" H
solid 1⅝" Ø base



9514

1½" W x 4" H
solid 1¼" sq. base



7-A

1⅝" W x 2½" H
solid 1¼" sq. base



9

2" W x 3¾" H
solid 1½" Ø base



8-URN

1⅝" W x 4" H
solid 1½" Ø base



657-X

2¼" W x 3½" H
solid 1¼" Ø base



657-S

2½" W x 5½" H
solid 1¼" Ø base



657

2¼" W x 4¼" H
solid 1¼" Ø base



7-AXL

2" W x 3¼" H
solid 1¼" sq. base



657-M

3¼" W x 7¾" H
solid 2" Ø base



8621

4" W x 9½" H
solid 3" Ø base



9324

3¼" W x 7⅞" H
solid 3¼" sq. base



8805-FB

6" W x 9¼" H
solid 4" sq. base



657-L

4½" W x 8¾" H
solid 4" Ø base



9515

2½" W x 6⅞" H



127

2" W x 4" H



9520

6" W x 11" H



843

1½" W x 6½" H
Solid
¾" x 1¼"



9453-F

4½" W x 8" H
Solid
¾" x 1⅝"



9453-SL

4½" W x 9" H
Solid
¾" x 1¼"



9517

4" W x 5½" H
Solid
2" x 1"



9519

6" W x 14½" H
Solid
2¾" x 1½"



9522



9" W x 14" H
Solid
9" x ¾"

ALL DIMENSIONS ARE APPROXIMATE.

PICKET COLLARS FOR ROUND BAR

All measurements height x width.

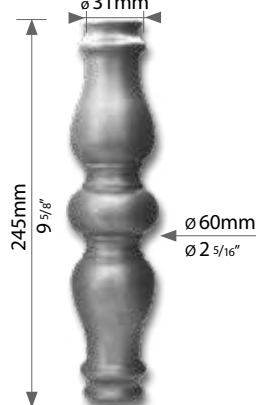
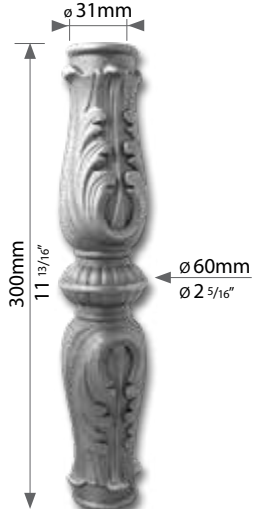
STEEL

					
89/1	89/4	89/20	89/17	89/12	89/2
1-7/8" x 2" undrilled	2-3/16" x 1-7/16" base for 3/4" Ø or 9/16" sq. for 1" Ø or 3/4" sq.	7/8" x 1-9/16" for 1/2" Ø, 5/8" Ø and 3/4" Ø	1-7/8" x 2" for 5/8" Ø and 3/4" Ø	2-1/2" x 1-7/16" for 1/2" Ø	3-1/8" x 1-15/16" for 5/8" Ø for 3/4" Ø





CAST IRON COLLARS BY GRANDE FORGE

These decorative cast iron sleeves are supplied with set screw.
NOT SUITABLE FOR HOT DIP GALVANIZING.

					
FOM116	FOM516	FOM716	FOM216	FOM416	FOM816
3/4" x 1-1/4" for 5/8" Ø	2-3/4" x 1-5/16" for 5/8" Ø	5-5/16" x 1-3/8" for 5/8" Ø	7/8" x 1-1/4" for 5/8" Ø	2-3/8" x 1-3/16" for 5/8" Ø	4-1/2" x 1-1/4" for 5/8" Ø

	
EG743	EG833
9-5/8" high for 1-3/16" Ø	11-13/16" high for 1-3/16" Ø

CAST IRON

	
CL8127	CL8587
1-5/16" x 1-1/2" for 1/2" Ø	1-7/16" x 1-5/8" for 5/8" Ø
	
CL8347	CL8117
1-1/2" x 1-15/16" for 3/4" Ø	1-7/8" x 2-1/4" for 1" Ø

ALL DIMENSIONS ARE APPROXIMATE.

PICKET COLLARS FOR ROUND BAR

BRASS

These decorative brass sleeves are polished and lacquered and come equipped with an M3 locking screw to allow for fast and easy mounting. Indoor use only.

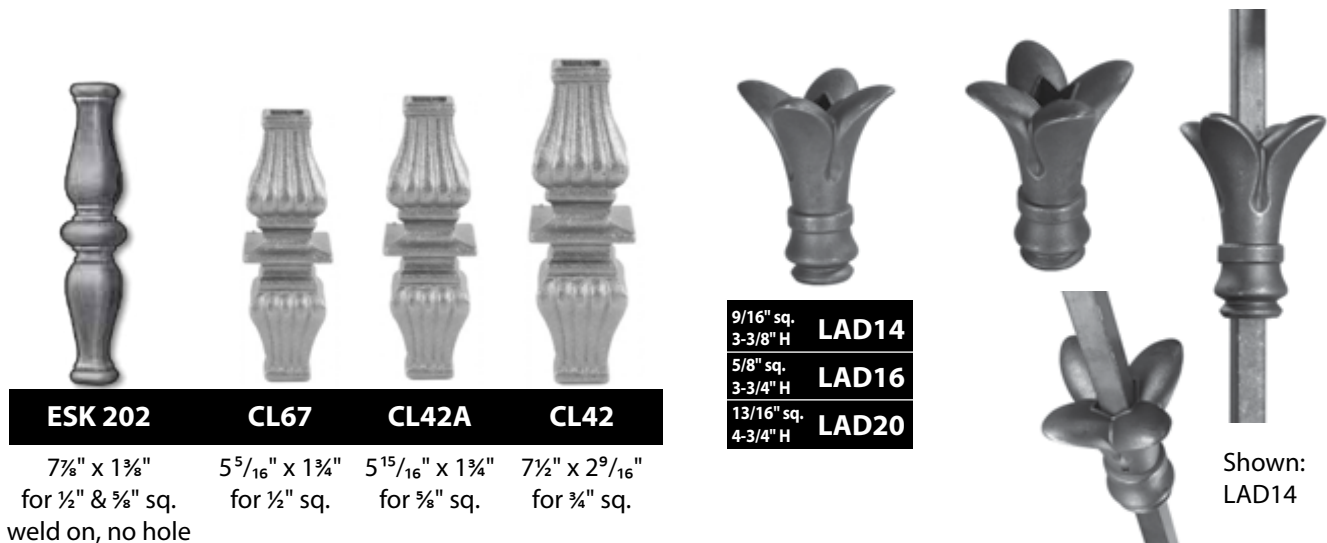
ALSO AVAILABLE IN THESE FINISHES*



PICKET COLLARS FOR SQUARE BAR

All measurements height x width.

STEEL









ALL DIMENSIONS ARE APPROXIMATE.

PICKET COLLARS FOR SQUARE BAR

All measurements height x width.

STEEL



							
1-292	1-292-2	89/21-12mm	89/21-16mm	89/22	89/23	89/24	89/31
$\frac{7}{8}$ " x $\frac{1}{16}$ " for $\frac{1}{2}$ " sq.	$\frac{7}{8}$ " x $\frac{1}{16}$ " for $\frac{3}{8}$ " sq.	$\frac{5}{8}$ " x $1\frac{5}{16}$ " for $\frac{1}{2}$ " & $\frac{5}{8}$ " sq. bar	$\frac{3}{4}$ " x $1\frac{1}{2}$ " for $\frac{3}{4}$ " sq. bar	1 " x $1\frac{9}{16}$ " for 1 " sq. bar	1 " x 2 " for $1\frac{1}{4}$ " sq. bar	1 " x $2\frac{1}{4}$ " for $1\frac{1}{2}$ " sq. bar	
							
89/15-16mm	89/16-16mm	89/15-20mm	89/16-20mm	EGK82*	EGK125*	1-338-1	747/12
$3\frac{3}{8}$ " x $1\frac{1}{2}$ " for $\frac{3}{8}$ " sq. & $\frac{3}{4}$ " sq. bar	$1\frac{9}{16}$ " x $1\frac{1}{2}$ " for $\frac{5}{8}$ " & $\frac{3}{4}$ " sq. bar	$3\frac{5}{16}$ " x $1\frac{5}{8}$ " for $\frac{9}{16}$ " sq.	$5\frac{5}{8}$ " x $2\frac{9}{16}$ " for 1 " sq.	$2\frac{11}{16}$ " x $2\frac{9}{16}$ " for $\frac{5}{8}$ " sq.	$2\frac{9}{16}$ " x $1\frac{9}{16}$ " for $\frac{1}{2}$ " sq.	$2\frac{21}{32}$ " x $1\frac{3}{4}$ " for $\frac{9}{16}$ " sq.	$3\frac{1}{16}$ " x 2 " for $\frac{3}{8}$ " sq.

* Set screw included

CAST IRON

			
8514	8527	CL8527H	CL8527Y
2 " x $2\frac{1}{8}$ " for $\frac{1}{2}$ " sq.	$1\frac{1}{8}$ " x $1\frac{3}{16}$ " for $\frac{1}{2}$ " sq.	$1\frac{1}{8}$ " x $1\frac{1}{4}$ " for $\frac{5}{8}$ " sq.	$1\frac{1}{8}$ " x 2 " for $\frac{3}{4}$ " sq.

CAST IRON HALF KNUCKLES

	
CEHK12 - 2 " x $1\frac{1}{2}$ ", fits over $\frac{1}{2}$ " sq.	CEHK58 - $1\frac{7}{8}$ " x $1\frac{5}{8}$ ", fits over $\frac{5}{8}$ " sq.
CEHK34 - $1\frac{1}{8}$ " x $1\frac{1}{8}$ ", fits over $\frac{3}{4}$ " sq.	CEHK10 - $2\frac{1}{2}$ " x $2\frac{1}{2}$ ", fits over 1 " sq.

Note: These half knuckles are meant to cover 3 sides only. They are not "split" to go around a full spindle.

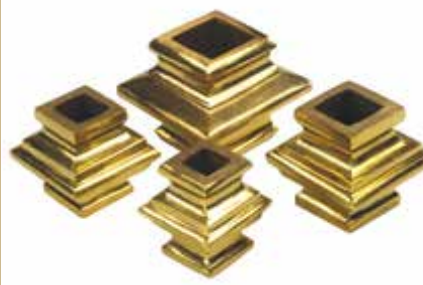
Use for metal work designs that will be applied to screen or security doors.

ALUMINUM



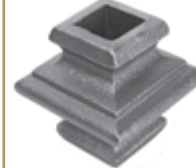
683-AL	fits over $\frac{1}{2}$ " sq.	$1\frac{1}{2}$ " W x $1\frac{7}{8}$ " H
683H-AL	fits over $\frac{5}{8}$ " sq.	$1\frac{3}{4}$ " W x $1\frac{7}{8}$ " H
683Y-AL	fits over $\frac{3}{4}$ " sq.	2 " W x $1\frac{7}{8}$ " H
683Z-AL	fits over 1 " sq.	$2\frac{1}{2}$ " W x 2 " H

BRASS



683BR	fits over $\frac{1}{2}$ " sq.	$1\frac{3}{4}$ " W x 2 " H
683H-BR	fits over $\frac{5}{8}$ " sq.	$1\frac{7}{8}$ " W x 2 " H
683Y-BR	fits over $\frac{3}{4}$ " sq.	2 " W x 2 " H
683Z-BR	fits over 1 " sq.	$2\frac{1}{2}$ " W x $2\frac{1}{2}$ " H

CAST IRON / STEEL



* 683S has a set screw included

CAST IRON

683	fits over $\frac{1}{2}$ " sq.	$1\frac{1}{4}$ " W x 2 " H
683H	fits over $\frac{5}{8}$ " sq.	$1\frac{7}{8}$ " W x 2 " H
683Y	fits over $\frac{3}{4}$ " sq.	2 " W x 2 " H
683Z	fits over 1 " sq.	$2\frac{1}{2}$ " W x $2\frac{1}{2}$ " H
683S*	fits over $\frac{1}{2}$ " sq.	$1\frac{1}{2}$ " W x $1\frac{7}{8}$ " H

STEEL

683-ST	fits over $\frac{1}{2}$ " sq.	$1\frac{1}{4}$ " W x 2 " H
683H-ST	fits over $\frac{5}{8}$ " sq.	$1\frac{7}{8}$ " W x 2 " H
683Y-ST	fits over $\frac{3}{4}$ " sq.	2 " W x 2 " H
683Z-ST	fits over 1 " sq.	$2\frac{1}{2}$ " W x $2\frac{1}{2}$ " H
683X-ST	fits over $1\frac{1}{4}$ " sq.	$1\frac{1}{2}$ " W x $1\frac{7}{8}$ " H

ALL DIMENSIONS ARE APPROXIMATE.

SHOES AND BASE COLLARS FOR SQUARE BAR

All measurements height x width.

CAST IRON

FITS OVER 1/2" SQUARE



9503

7/8" x 1 1/2"
fits over 1/2"

8524

1" x 1 1/4"
fits over 1/2"

8525

2" x 1 1/4"
fits over 1/2"

EE

7/8" x 2 3/8"
fits over 1/2"

9501-CI

5/8" x 1 1/16"
fits over 1/2"

SS-1/2

1 1/4" x 2 1/2"
fits over 1/2"

FITS OVER 9/16" SQUARE



8524-N

1" x 1 1/4"
fits over 9/16"

8525-N

2" x 1 1/4"
fits over 9/16"

CS50

2 3/8" wide
fits over 9/16"

FITS OVER 5/8" SQUARE



8524-H

1" x 1 1/4"
fits over 5/8"

8525-H

2" x 1 1/4"
fits over 5/8"

EE-5/8

1" x 2 1/2"
fits over 5/8"

FITS OVER 3/4" SQUARE



9508

1 1/4" x 1 5/8"
fits over 3/4"

9534

1" x 3"
fits over 3/4"

MIS-34

1 1/8" x 1 1/4"
fits over 3/4"

FITS OVER 1" SQUARE



AA

1" x 3"
fits over 1"

MM

1 3/8" x 3 3/4"
fits over 1"

SS-1

2 1/8" x 3 3/4"
fits over 1"

BB

1 3/8" x 3 3/4"
fits over 1"

CC

2" x 3 1/8"
fits over 1"

9504

1 1/8" x 2"
fits over 1"

FITS OVER 1" SQUARE



9502-CI

1" x 2 1/4"
fits over 1"

CS80

3 5/8" wide
fits over 1"

KK-1

1 1/4" x 3"
fits over 1"

LL

1 3/8" x 2 3/4"
fits over 1"

MIS-1

1 3/16" x 1 1/4"
fits over 1"

CSH1

1 7/8" x 3 3/8"
fits over 1"

FITS IN 1" SQUARE



FF

1 1/8" x 3"
fits in 1"

FITS OVER 1-1/4" SQUARE



CL36A

2 3/8" x 2 3/8"
fits over 1 1/4"

MIS-114

1 1/2" x 2 3/4"
fits over 1 1/4"

9540

1 1/2" x 3 1/4"
fits over 1 1/4"

9506

1 3/4" x 2 3/8"
fits over 1 1/4"

RR

1 1/4" x 3 3/8"
fits over 1 1/4"

CSH114

1 7/8" x 3 1/2"
fits over 1 1/4"

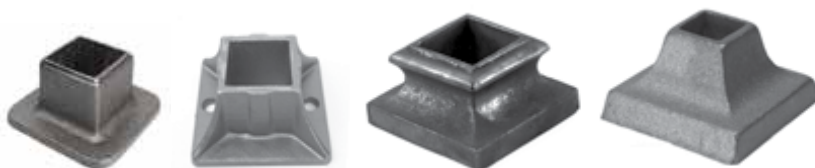
ALL DIMENSIONS ARE APPROXIMATE.

SHOES AND BASE COLLARS FOR SQUARE BAR

All measurements height x width.

CAST IRON

FITS OVER 1-1/2" SQUARE



9550

HH

MIS-112

CSH112

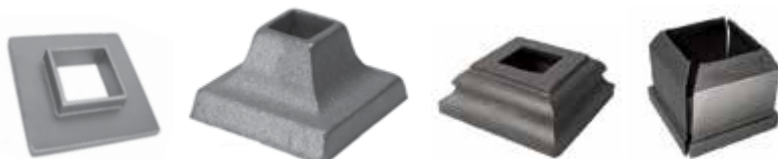
2" x 3 3/4"
fits over 1 1/2"

2" x 3 3/4"
fits over 1 1/2"

1 3/4" x 3"
fits over 1 1/2"

2" x 3 1/2"
fits over 1 1/2"

FITS OVER 2" TO 4" SQUARE



KK-2

CSH2

8607

8398

1" x 5"
fits over 2"

2" x 4 5/8"
fits over 2"

2 1/2" x 7 1/8"
fits over 2 1/2"

5 1/2" x 6 1/8"
fits over 4"

CAST IRON WITH METALLIC ZINC SPRAY



FOC52Z

FOC62Z

2" sq.
fits over 9/16"

2 3/8" sq.
fits over 5/8"



FOC82Z- 1 3/16" sq. **FOC85Z-1 3/16" sq.**

FOC83Z- 1" sq. **FOC84Z-1 7/16" sq.**

1 3/8" x 3 3/8"

1 9/16" x 3 1/2"

STEEL



747/15

1 17/32" x 1 9/16"
fits over 1/2"

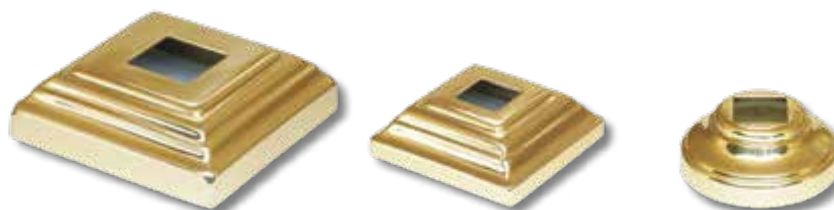
747/16

1 11/16" x 1 1/4"
fits over 9/16"

747/17

1 13/16" x 2"
fits over 5/8"

BRASS



CSL825

3-3/8" sq.
fits over 1" sq.

CSL614- 9/16" sq.

CSL616- 5/8" sq.

CSL620- 3/4" sq.

2-3/8" sq.

CSL52- 9/16" sq.

CSL54- 5/8" sq.

CSL53- 3/4" sq.

2-1/16" Ø



CSL16

2-3/8" Ø
fits over 5/8" Ø

CSL147

2" sq.
fits over 5/8" sq.

CSL86

2-5/8" Ø
fits over 5/8" sq.

CSL51

2-1/16" Ø
fits over 9/16" Ø

CSL61

2-1/2" Ø
fits over 5/8" Ø

CSL114

4-5/16" Ø
fits over 1-9/16" Ø

ALL DIMENSIONS ARE APPROXIMATE.

SHOES AND BASE COLLARS FOR SQUARE BAR

All measurements height x width.

ALUMINUM



9502

1" x 2 1/4"
fits over 1"

CAS-12

1 1/16" x 1 1/4"
fits over 1/2"

CAS-58

1 1/16" x 1 1/4"
fits over 5/8"

CAS-34

1 1/8" x 1 1/4"
fits over 3/4"

CAS-1

1 3/16" x 1 3/4"
fits over 1"

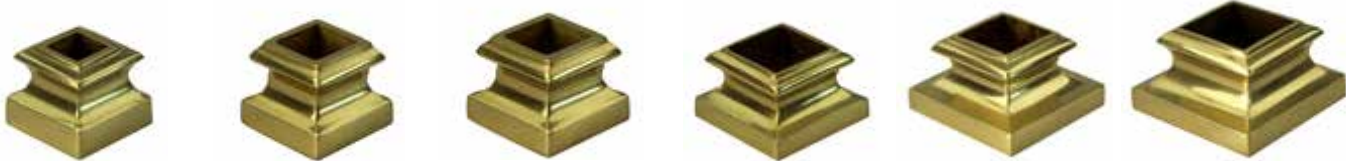
CAS-114

1 1/2" x 2 3/4"
fits over 1 1/4"

CAS-112

1 3/4" x 3"
fits over 1 1/2"

BRASS



BRS-12

1 1/16" x 1 1/4"
fits over 1/2"

BRS-58

1 1/16" x 1 1/4"
fits over 5/8"

BRS-34

1 1/8" x 1 1/4"
fits over 3/4"

BRS-1

1 3/16" x 1 3/4"
fits over 1"

BRS-114

1 1/2" x 2 3/4"
fits over 1 1/4"

BRS-112

1 3/4" x 3"
fits over 1 1/2"

STEEL TUBING FLANGES

Plain Flange

TUBE SIZE	BASE SIZE	HEIGHT	STEEL
1-1/2"	3-3/4" sq.	1-3/4"	8913



Plain Flange with Set Screw*

TUBE SIZE	BASE SIZE	HEIGHT	STEEL
1-1/4"	3-3/4" sq.	1-1/2"	8910
1-1/2"	3-3/4" sq.	1-3/4"	8916

* 1/4"-20 set screw not for structural use.



Flange with Four Countersunk Holes

TUBE SIZE	BASE SIZE	HEIGHT	STEEL
1-1/4"	3-3/4" sq.	1-1/2"	8908
1-1/2"	3-3/4" sq.	1-3/4"	8914



Flange with Four Countersunk Holes

TUBE SIZE	BASE SIZE	HEIGHT	THICKNESS	STEEL
3/4"	3-3/4" x 3-3/4"	7/8"	10 Ga.	8041-3
1"	3-3/4" x 3-3/4"	7/8"	10 Ga.	8041
1-1/4"	3-3/4" x 3-3/4"	7/8"	10 Ga.	8045
1-1/2"	3-3/4" x 3-3/4"	7/8"	10 Ga.	8047
2"	5" x 5"	1"	7 Ga.	8051
2-1/2"	5" x 5"	1"	7 Ga.	8049



Plain Flange - No Mounting Holes

TUBE SIZE	BASE SIZE	HEIGHT	THICKNESS	STEEL
3/4"	3-3/4" x 3-3/4"	7/8"	10 Ga.	8041-3NH
1"	3-3/4" x 3-3/4"	7/8"	10 Ga.	8041-NH
1-1/2"	3-3/4" x 3-3/4"	7/8"	10 Ga.	8047-NH
2"	5" x 5"	1"	7 Ga.	8051-NH
2-1/2"	5" x 5"	1"	7 Ga.	8049-NH
3"	5" x 5"	5/8"	7 Ga.	8096-NH



SIMSHOE-A PLASTIC SPLIT-COVER STYLE SHOE!

While traditional cover shoes must be on the post before the baseplate is welded to it, Simshoe™ allows you to put your shoes on last.



CS251

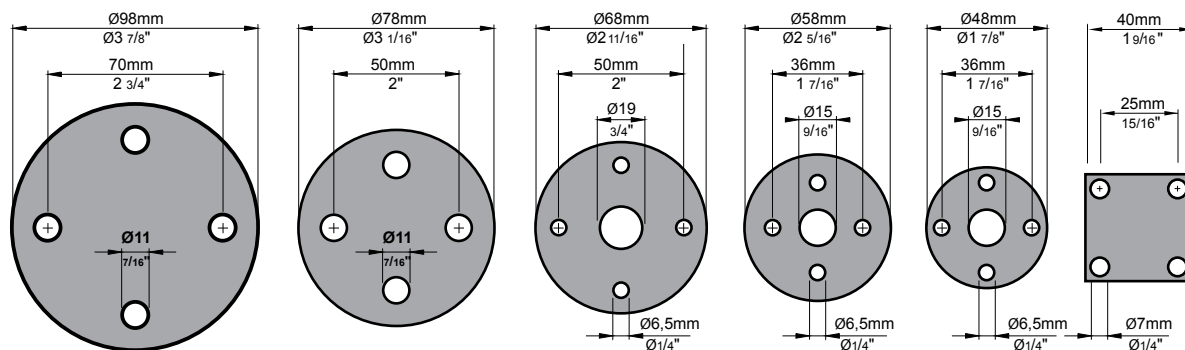
3-3/8" sq.
fits over 1" sq.

CS250

3-1/8" sq.
1/4" thick
fits over 1" sq.

SS1-3	for 1"	3 9/16" sq. base	2" H
SS114-3	for 1 1/4"	3 9/16" sq. base	2" H
SS112-3	for 1 1/2"	3 9/16" sq. base	2" H
SS112-4	for 1 1/2"	4 3/4" sq. base	1 1/8" H
SS2-4	for 2"	4 3/4" sq. base	1 1/8" H

BASE PLATES AND SHOES



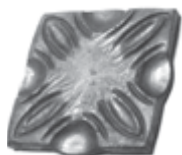
RF100	RF80	RF70	RF60	RF50	RF40
8 mm 5/16"	8 mm 5/16"	6 mm 1/4"	6 mm 1/4"	6 mm 1/4"	5 mm 3/16"



WT-113	3" sq.	3/8" Holes	5/32" Thick
WT-114	4" sq.	3/8" Holes	5/32" Thick
WT-115	5" sq.	7/16" Holes	1/4" Thick
WT-116	6" sq.	7/16" Holes	1/4" Thick



92/1
7 7/8" H x 5 1/4" W 1/4" thick



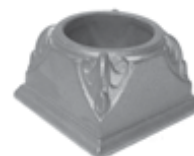
92/12	92/13	92/14	92/2	92/3	92/5	CST15
3 15/16" sq. 3/8" thick	3 3/8" Ø 1/4" thick	4 1/16" Ø 1/4" thick	5" x 5" 1/4" thick	4 3/8" x 4 3/8" 1/4" thick	4 3/8" x 4 3/8" 1/4" thick	5 7/8" H x 2 3/4" W

SHOES AND BASE COLLARS FOR ROUND BAR



HK8127	SH356	HK8587	8524-HR	8525-HR	HK8347
3/4" x 1 1/4" fits over 1/2" Ø	1" x 1 1/4" fits over 1/2" Ø	3/4" x 1 1/2" fits over 5/8" Ø	1" x 1 1/4" fits over 5/8" Ø	2" x 1 1/4" fits over 5/8" Ø	1" x 1 3/4" fits over 3/4" Ø

DUCTILE IRON



DSH-R2	DSH-R5	DSH-R60	DSH-R61	9103	FOC16Z	FOC72Z
1" x 1 3/16" fits over 1/2" Ø	1 1/8" x 1 3/8" fits over 5/8" Ø	1 3/16" base fits over 1/2" Ø	1 5/16" base fits over 5/8" Ø	3 3/8" x 5 5/8" fits over 3 1/2" Ø	2 3/8" Ø fits over 5/8" Ø	1 3/16" x 2 3/4" fits over 1" Ø

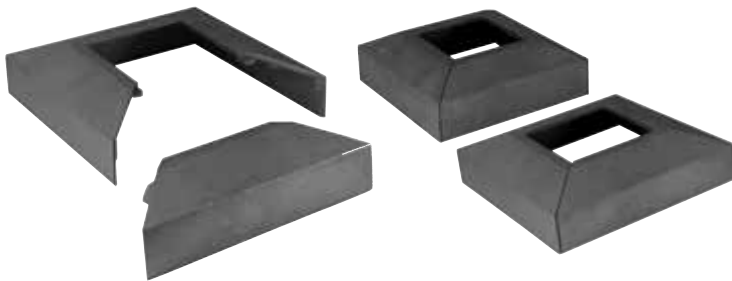
ALL DIMENSIONS ARE APPROXIMATE.

SHOES AND BASE PLATES

All measurements height x width.

ALUMINUM

DIE CAST ALUMINUM SPLIT SHOES (MARINE GRADE)



ALSS-1-1/2	for 1½"	4" sq. base	1⅝" H
ALSS-2	for 2"	4¼" sq. base	1⅝" H
ALSS-2-1/2	for 2½"	5¼" sq. base	1⅝" H
ALSS-3	for 3"	5½" sq. base	1⅝" H

CAST ALUMINUM SPLIT SHOES



245A-58	for ⅝"	1⅞" sq. base	1¼" H
245A-34	for ¾"	1⅞" sq. base	1⅝" H
245A-1	for 1"	2½" sq. base	1⅝" H
245A-114	for 1¼"	3" sq. base	1¾" H
245A-112	for 1½"	3" sq. base	1⅝" H
245A-2	for 2"	3⅝" sq. base	2" H
245A-212	for 2½"	4½" sq. base	2¼" H
245A-3	for 3"	6¼" sq. base	2⅝" H
245A-4	for 4"	7" sq. base	3" H



A simple, inexpensive finishing touch for anodized or powder coated rails. Slip on style (non-weldable).

MR-1/2	for ½"	2¼" sq. base	⅞" H
MR-5/8	for ⅝"	2¼" sq. base	⅞" H
MR-3/4	for ¾"	2¼" sq. base	⅞" H
MR-1	for 1"	2⅝" sq. base	¾" H
MR-1-1/4	for 1¼"	3⅝" sq. base	1" H
MR-1-1/2	for 1½"	3¼" sq. base	1" H
MR-2	for 2"	4" sq. base	1" H
MR-2-1/2	for 2½"	5" sq. base	1" H

ALL "MR" SHOES ARE 18 GAUGE

Marine Grade



2156-SHOE	1½" sq. 3⅝" W 1¼" H
------------------	---------------------------



AM-1	for 1"	3" sq. base	1/4" H	16 Ga.
AM-1-1/4	for 1-1/4"	3" sq. base	1/4" H	16 Ga.
AM-1-1/2	for 1-1/2"	3" sq. base	1/4" H	16 Ga.
AM-2	for 2"	4" sq. base	1/2" H	16 Ga.
AM-2-1/2	for 2-1/2"	5" sq. base	1/2" H	16 Ga.



CP-1	for 1"	3-3/4" sq. base	1/4" H
CP-114	for 1-1/4"	3-3/4" sq. base	1/4" H
CP-112	for 1-1/2"	3-7/8" sq. base	1/2" H
CP-2	for 2"	3-7/8" sq. base	1/2" H
CP-212	for 2-1/2"	5" sq. base	1" H
CP-3	for 3"	5-1/2" sq. base	1" H
CP-4	for 4"	6-1/2" sq. base	1" H

8042-NH for 1"
3-3/4" sq. base, 7/8" H, 10 Ga.

8046-NH for 1-1/4"
3-3/4" sq. base, 7/8" H, 10 Ga.

8048-NH for 1-1/2"
3-3/4" sq. base, 7/8" H, 10 Ga.

8052-NH for 2"
5" sq. base, 1" H, 7 Ga.

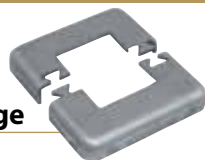
8050-NH for 2-1/2"
5" sq. base, 1" H, 7 Ga.

8098-NH for 3"
5" sq. base, 5/8" H, 7 Ga.



STEEL AND ALUMINUM

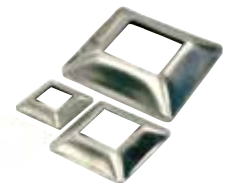
Square Puzzle-Lock Split Flange



TUBE SIZE	HEIGHT	COVERS BASE SIZE	STEEL	ALUMINUM
1"	3/4"	4" x 4"	26430	Custom
1-1/4"	3/4"	4" x 4"	26431	Custom
1-1/2"	3/4"	4" x 4"	26432	26436
2"	3/4"	4" x 4"	26433	26437

Slip-On Cover Plate

TUBE SIZE	BASE SIZE	HEIGHT	THICKNESS	STEEL	ALUMINUM
3/4"	2" x 2"	7/16"	10 Ga.	8077	
1"	2" x 2"	3/8"	10 Ga.	8079	
1-1/4"	3" x 3"	5/8"	10 Ga.	8081	8082
1-1/2"	3" x 3"	5/8"	10 Ga.	8083	8084
2"	4" x 4"	13/16"	7 Ga.	8085	8086



ALL DIMENSIONS ARE APPROXIMATE.

FLANGES

PIPE FLANGES



Heavy Duty Weld Flange

4-3/8" diameter with four oval mounting holes, clear for 3/8" bolts. May be used with or without a canopy flange.

FOR USE WITH PIPE SIZE	PIPE DIAMETER	THICKNESS	STEEL	TYPE 304 STAINLESS
1-1/4"	1.66"	1/4"	1613HD	1613HD-S
1-1/2"	1.90"	1/4"	1623HD	1623HD-S



Heavy Base Plain Flange with Set Screw*

PIPE SIZE	OD	STEEL	ALUMINUM	STAINLESS
1-1/4"	1.66"	1429	1469	1529
1-1/2"	1.90"	1437	1477	1537

* 1/4"-20 set screw - not for structural use.



Canopy Flange

4-1/2" diameter, 18 gauge. Cover has clearance for 3/8" bolt heads. This canopy flange drops into place. Use epoxy or silicone to affix to heavy duty weld flange..

PIPE SIZE	OD	COVER DIAM.	HT.	STEEL	3003 ALUMINUM	TYPE 304 STAINLESS
1-1/4"	1.66"	4-1/2"	1"	2065	2066	2067
1-1/2"	1.90"	4-1/2"	1"	2075	2076	2077



Snap-On Cover Flange Base

4-3/8" diameter base has four clear mounting holes for 3/8" bolts.

PIPE SIZE	OD	COVER DIAM.	THICK.	STEEL	3003 ALUMINUM	TYPE 304 STAINLESS
1-1/4"	1.66"	4-3/8"	.25"	2065B	2066B	2067B*
1-1/2"	1.90"	4-3/8"	.25"	2075B	2076B	2077B*

* Thickness = .188".



Plain Flange

PIPE SIZE	OD	STEEL	ALUMINUM	STAINLESS
1-1/4"	1.66"	1610	1630	1610-S
1-1/2"	1.90"	1620	1640	1620-S



Flange with Four Holes

PIPE SIZE	OD	STEEL	ALUMINUM
1-1/4"	1.66"	1613	1633
1-1/2"	1.90"	1623	1643



Puzzle-Lock Split Flange for Schedule 40 Pipe

TUBE SIZE	OD	HEIGHT	BASE SIZE	STEEL	ALUMINUM
1-1/4"	1.66"	3/8"	4-3/8" Ø	26402	26412
1-1/2"	1.90"	3/8"	4-3/8" Ø	26403	26413

PLASTIC SIMSHOE



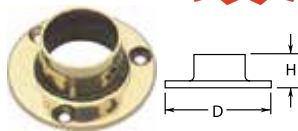
DT-112R for 1½" dia. Tubing
SP-114R for 1¼" dia. Standard Pipe
SP-112R for 1½" dia. Standard Pipe

ALL DIMENSIONS ARE APPROXIMATE.

FLANGES

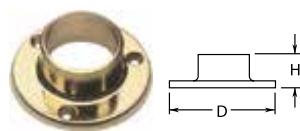
**TUBING IS ON
PAGE 312**

BRASS FLANGES



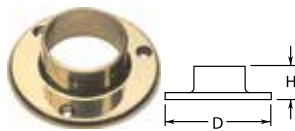
500 Wall Flange

ITEM #	TUBING	D	H
00-500/1	1"	2"	7/8"



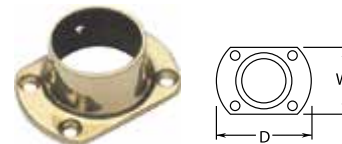
510 Wall Flange

ITEM #	TUBING	D	H
00-510/1-1/2	1-1/2"	3"	1-1/4"



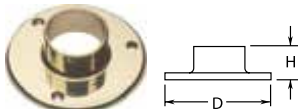
530 Wall Flange

ITEM #	TUBING	D	H
00-530/2	2"	4"	1-1/4"



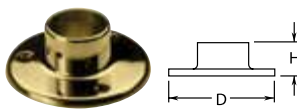
511/531 Cut Flange

ITEM #	TUBING	D	W
00-511/1-1/2	1-1/2"	3"	2"
00-531/2	2"	4"	2-1/2"



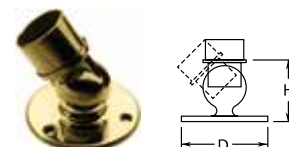
532 Floor Flange

ITEM #	TUBING	D	H
00-532/2	2"	5"	1-3/8"



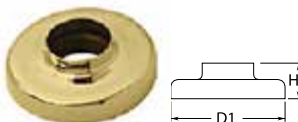
512 Floor Flange

ITEM #	TUBING	D	H
00-512/1-1/2	1-1/2"	4"	1-1/4"



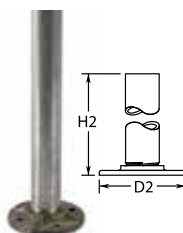
533 Adjustable Flange

ITEM #	TUBING	D	H
00-533/2	2"	4"	2-9/16"



540 Canopy

ITEM #	TUBING	D-1	H-1
00-540/1-1/2	1-1/2"	4"	1"
00-540/2	2"	5"	1"

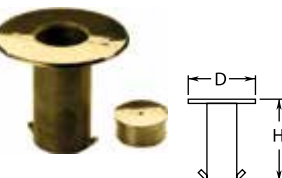


541 Steel Flange*

ITEM #	TUBING	D-2	H-2
20-541/1-1/2	1-1/2"	3-1/2"	1-3/8"
20-541/2	2"	4-1/2"	1-1/2"

*Use with 540 Canopy

Example
showing brass
tubing and
canopy over
steel flange



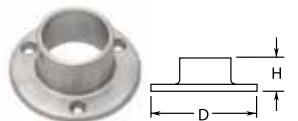
545 Floor Socket w/Cap

ITEM #	TUBING	D	H
00-545/2	2"	4-7/8"	4-1/2"

STAINLESS STEEL TUBING FLANGES

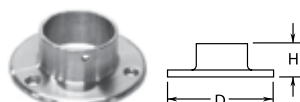
**FITTINGS ARE AVAILABLE IN A 304 SS 40-POLISHED • 304 SS 44-SATIN
316 SS 47-POLISHED • 316 SS 49-SATIN FINISH**

**TUBING IS ON
PAGE 302**



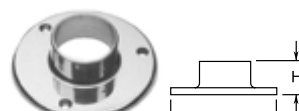
510 Wall Flange

ITEM #	TUBING	D	H
44-510/1-1/2	1-1/2"	3"	1-1/4"



530 Wall Flange

ITEM #	TUBING	D	H
47-530/2	2"	4"	1-1/4"
49-530/2			



532 Floor Flange

ITEM #	TUBING	D	H
40-532/2	2"	5"	1-3/8"
44-532/2			



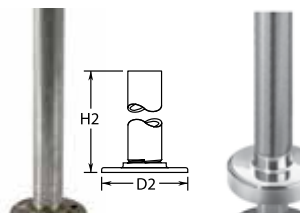
511/531 Cut Flange

ITEM #	TUBING	D	W
40-511/1-1/2	1-1/2"	3"	2"
44-511/1-1/2			
40-531/2	2"	4"	2-1/2"
44-531/2			



540 Canopy

ITEM #	TUBING	D-1	H-1
49-540/1-1/2	1-1/2"	4"	1-1/4"
49-540/2	2"	5"	1-1/2"



541 Steel Flange

ITEM #	TUBING	D-2	H-2
20-541/1-1/2	1-1/2"	3-1/2"	1-3/8"
20-541/2	2"	4-1/2"	1-1/2"

*Use with 540 Canopy



545 Floor Socket w/Cap

ITEM #	TUBING	D	H
40-545/2	2"	4-7/8"	4-1/2"
44-545/2			



544 Floor Socket w/Cap

ITEM #	TUBING	D	H
40-544/2	2"	2-3/4"	4-1/2"
44-544/2			

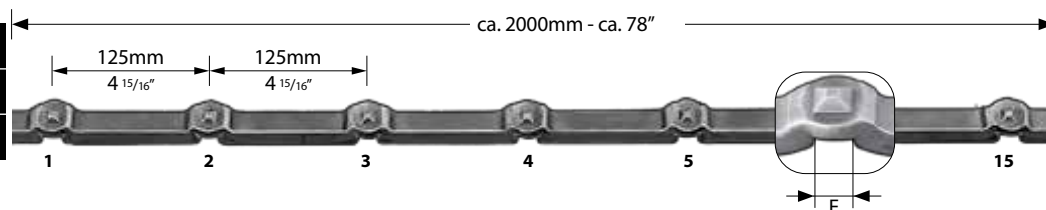
ALL DIMENSIONS ARE APPROXIMATE.

FORGED CROSS BARS

On the front, a nailhead ornamentation. At the back, 9/16" or 5/8" notches which allow for easy and rapid positioning.

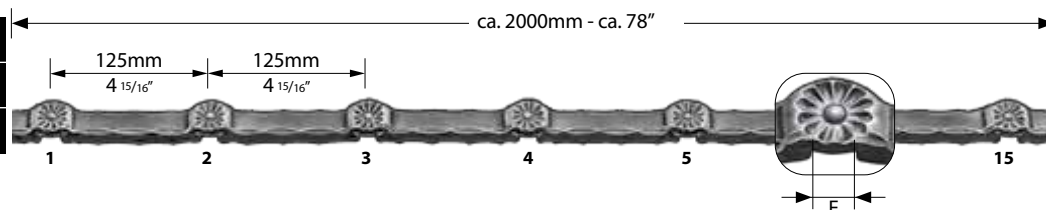
TRADITION

14 mm 9/16"	E: 14.5mm E: 9/16"	T201
20x15 mm 3/4x9/16"	E: 14.5mm E: 9/16"	T202
20x15 mm 3/4x9/16"	E: 16.5mm E: 5/8"	T206

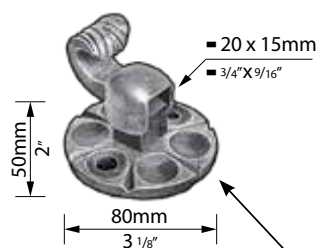


RUSTIQUE

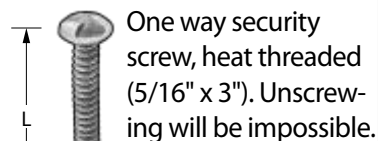
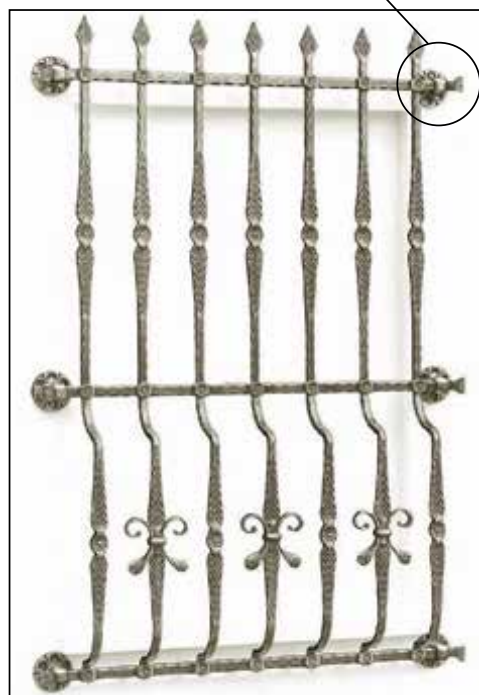
14 mm 9/16"	E: 14.5mm E: 9/16"	TM201
20x15 mm 3/4x9/16"	E: 14.5mm E: 9/16"	TM202
20x15 mm 3/4x9/16"	E: 16.5mm E: 5/8"	TM206



Clamping plate for cross bars.
Supplied with 2 7/16" (11mm) Ø holes
matching VSU70 or VH108 screws.
(Screws must be ordered separately).

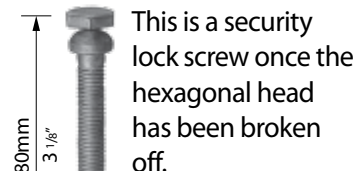


AK241



Sold in packs of 10.

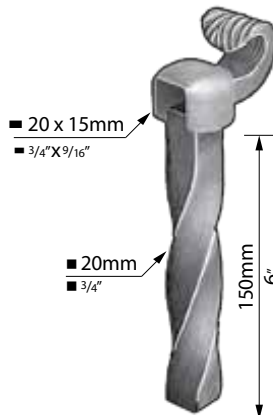
8 mm L: 70 mm **VSU70**
5/16" L: 3"



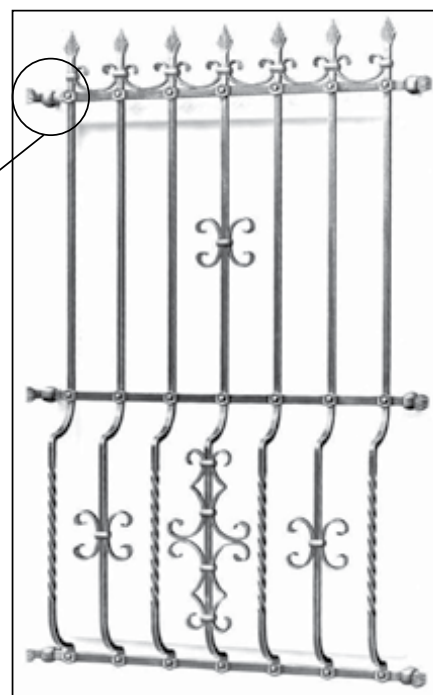
Sold in packs of 10.

M10 **VH108**

This lug, must be sealed in
the wall before using with
cross bars above.



AK240



ALL DIMENSIONS ARE APPROXIMATE.

STEEL ROSETTES



75/5

4-1/2" Ø
1/4" thick



75/6

3-1/2" Ø
1/4" thick



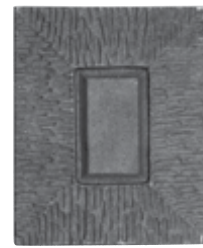
94/B/5

4-5/32" Ø
5/32" thick



94/B/6

4-17/32" Ø
5/32" thick



TR008-ST

2-3/4" W x 3-3/8" H
5/16" thick



77/29

1" Ø
1/4" thick



77/30

1-3/4" Ø
1/4" thick



77/31

2-9/16" Ø
1/4" thick



77/17

2-3/4" Ø
1/4" thick



77/18

3-3/4" Ø
1/4" thick



RO65

2-9/16" Ø



RO100

4" Ø



116/A/3

3-3/4" Ø
1/8" thick



116/A/5

3-3/4" Ø
1/8" thick



11-120

3-1/2" Ø
1/8" thick



11-120-1

4-3/4" Ø
1/8" thick



ROT100

4" Ø
5/64" thick



ROT90

3-1/2" Ø
5/64" thick



ROT55

2-3/16" Ø
5/64" thick



77/21

3-1/8" Ø
5/32" thick



FDF7

3" Ø
5/32" thick
double faced



FDF11

4-5/16" Ø
5/32" thick
double faced



FDF13

5-1/8" Ø
5/16" thick
double faced

ALL DIMENSIONS ARE APPROXIMATE.

CAST BRONZE AND STEEL ROSETTES

In response to inquiries for a more sophisticated and wider variety of applied decorative details we offer a limited selection of historically accurate castings in bronze alloys. These designs are based upon decorative elements from the various classical architectural styles from the 16th to the 18th century.

Designed by Tom TK Ryan exclusively for Architectural Iron Designs.

The patinated finishes may vary slightly from the photos as they are hand applied.

Rectangular Provincial Rosette 3" long x 2¾" wide x ¾" thick in a ¾" wide border.



**TR005 (BRONZE WITH TEMPORARY
CLEAR COAT FINISH)**



TR005P (BRONZE WITH PATINA FINISH)



TR005-ST (STEEL)

Dynamic Louis XV Style Rosette 4½" O.D. with contoured open edges and center floral boss. Substantial rosette at approximately 2 lbs each.



**TR003 (BRONZE WITH TEMPORARY
CLEAR COAT FINISH)**



TR003P (BRONZE WITH PATINA FINISH)



TR003-ST (STEEL)

"Acanthus" Rosette 4½" O.D. body approximately ¾" thick, raised ribs radiating from the central cupped pistil of berries. A substantial rosette at approximately 2 lbs. each.



**TR004 (BRONZE WITH TEMPORARY
CLEAR COAT FINISH)**



**TR004P
(BRONZE WITH PATINA FINISH)**



TR004-ST (STEEL)

ALL DIMENSIONS ARE APPROXIMATE.

CAST BRONZE AND STEEL ROSETTES

The patinated finishes may vary slightly from the photos as they are hand applied.

Small Gothic "Dynamic" Rosette 2½" round with "ogee" molded edge.
½" thick at central high point. Stylized deep relief.



**TR001 (BRONZE WITH TEMPORARY
CLEAR COAT FINISH)**



TR001P (BRONZE WITH PATINA FINISH)



TR001-ST (STEEL)

Beautiful Oval Sunflower Rosette 3½" x 2¼" x ½" thick



**TR002 (BRONZE WITH TEMPORARY
CLEAR COAT FINISH)**



TR002P (BRONZE WITH PATINA FINISH)



TR002-ST (STEEL)

"Tudor Rose" Rosette which has a versatile design element dating back
to the medieval period. Approximately 3" in diameter, ⅜" thick.



**TR006 (BRONZE WITH TEMPORARY
CLEAR COAT FINISH)**



TR006P (BRONZE WITH PATINA FINISH)



TR006-ST (STEEL)

"Dynamic Louis XV" Style Rosette same as TR003 but in 3" outside diameter with contoured
open edges and center floral boss.



**TR007 (BRONZE WITH TEMPORARY
CLEAR COAT FINISH)**



TR007P (BRONZE WITH PATINA FINISH)



TR007-ST (STEEL)

ALL DIMENSIONS ARE APPROXIMATE.

ROSETTES

BRASS



104/4

4-3/8" Ø
1/4" thick



104/5

2-3/4" Ø
1/4" thick



104/6

2-3/4" Ø
1/4" thick

THREADED BRASS ROSETTES

Brass rosettes with an M6 threaded hole, polished and lacquered or 24-Carat gilded and lacquered "G". Items for indoor use only.



RL 9

RL 9 G

3-3/8" Ø



RL 7

RL 7 G

2-13/16" Ø



RL 75

RL 75 G

3" Ø

ALUMINUM



116/A/3/A

3-3/4" Ø



771/3

2-9/16" Ø



1454/6

4-15/16" Ø



1454/5

4-1/8" Ø



1448/5

3-1/2" Ø
1/2" hole



681-AL

4" Ø

CAST BRONZE



MDC05.097

2-1/4" Ø



MDC05.008

2" Ø



MDC05.022

1-3/8" Ø



MDC05.093

1-1/2" Ø

CAST IRON



FOD7

2-15/16" Ø



FOD11

4-5/16" Ø



FOD13

5-5/16" Ø

ALL DIMENSIONS ARE APPROXIMATE.

ROSETTES AND QUATREFOILS

CAST IRON

(SBO)=Side backed out (concave on back) (SF)=Single faced (no design on back)
All castings double faced unless otherwise specified.



681 (SF)

4" Ø



681-DF

4" Ø



9051 (SF)

1 1/8" Ø



9051-DF

1 1/8" Ø



9052 (SF)

2 1/2" Ø



9052-DF

2 1/2" Ø



9050 (SF)

3 3/8" Ø



9050-DF

3 3/8" Ø



9053 (SF)

3 1/2" Ø



9053-DF

3 1/2" Ø



9054 (SF)

2" W x 3 3/8" H



9054-DF

2" W x 3 3/8" H



PAIR ONLY
(2 make full-bodied
rosette, or fit 1/4" rod)

9469-R (SBO)

2 1/2" W x 6 1/2" H



9465 (SF)

5 1/4" W x 8 3/8" H



9555 (SF)

3" Ø



9471-R

3 3/8" W x 5 1/4" H
3/4" deep

QUATREFOIL



17/1

9-27/32" Ø,
matl. size 5/16" sq.



1019/2

9-13/32" Ø,
matl. size 1/2" sq.



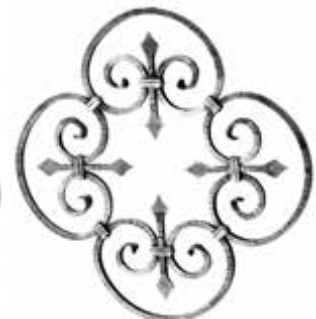
1010/3

11-7/16" Ø,
matl. size 1/2" sq.



24/2

15" Ø,
matl. size 3/8" x 3/16"



24/3

23-5/8" Ø,
matl. size 1/2" sq.

ALL DIMENSIONS ARE APPROXIMATE.

ORNAMENTAL GREEK KEY CASTINGS



Create a geometric/modern appearance on any metalwork design with these unique Greek Key infill and accent pieces. Available in Cast Iron and Aluminum. All are double faced.



Greek Key Scroll
4" W x 3¼" H, ⅝" thick

GKS-CI (cast iron)
GKS-AL (aluminum)



Angled Greek Key
5¾" W x 2⅝" H, ⅝" thick

GKA-CI (cast iron)
GKA-AL (aluminum)



Greek Key Pattern
7⅞" W x 6⅝" H, ¾" thick

GKP-CI (cast iron)
GKP-AL (aluminum)



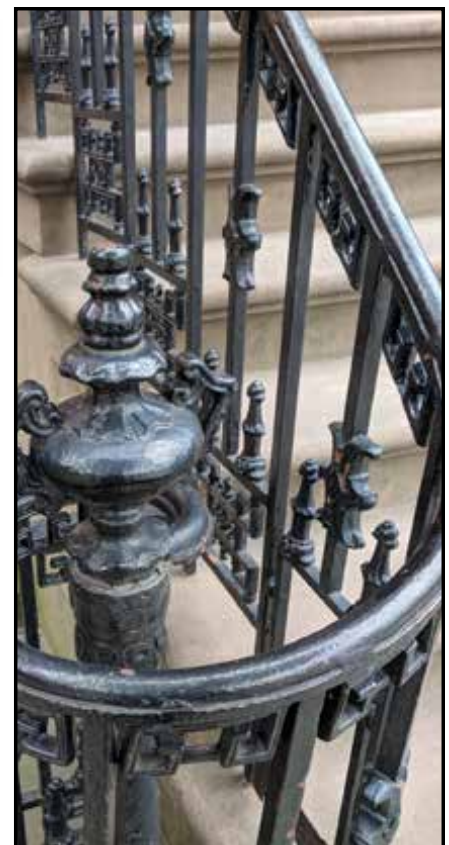
Curved Greek Key
3¾" W x 2½" H, ⅝" thick

GKC-CI (cast iron)
GKC-AL (aluminum)



Heavy Rosette
6" W x 3⅞" H, ⅝" thick
The back is SBO (side backed out) and measures 3/4" to 15/16" wide and is ¼" deep.

GKR-CI (cast iron)
GKR-AL (aluminum)



ALL DIMENSIONS ARE APPROXIMATE.

FORGED STEEL SCROLLS

SCROLLS IN 1/2" X 1/4" BAR



2-82-4

4" W x 5-1/8" H



59/1

3-3/4" W x
5-1/4" H



58/1

2-3/8" W x
4" H



58/2

3-1/4" W x
5-3/8" H



58/3

5-1/4" W x
7-1/2" H



58/4

5" W x
8-1/2" H



58/5

5" W x
9-7/8" H



58/12

2-3/4" W x
12-3/4" H



58/18

4" W x 4" H



80/A/11

2-9/16" W x
5-7/8" H



59/3

3" W x
7-1/2" H



59/13

4" W x
8-1/4" H



59/14

4" W x
9-5/8" H



59/8

5" W x
10-1/4" H



59/16

59/17
4" W x 10-1/2" H
4" W x 12-1/2" H



59/12

7-1/4" W x 17-1/4" H

SCROLLS IN 1/2" SQUARE BAR W/FISHTAIL ENDS



60/8

2-3/4" W x
4" H



60/9

3-1/2" W x
5-3/8" H



60/10

5-1/4" W x
8-1/4" H



60/21

7" W x
17" H



60/25

4" W x
8-5/8" H



60/26

4" W x
11-3/8" H



60/16

3-3/8" W x
7-1/2" H



60/17

5-1/4" W x
10-7/8" H



60/18

5-1/2" W x
13-1/2" H

ALL DIMENSIONS ARE APPROXIMATE.

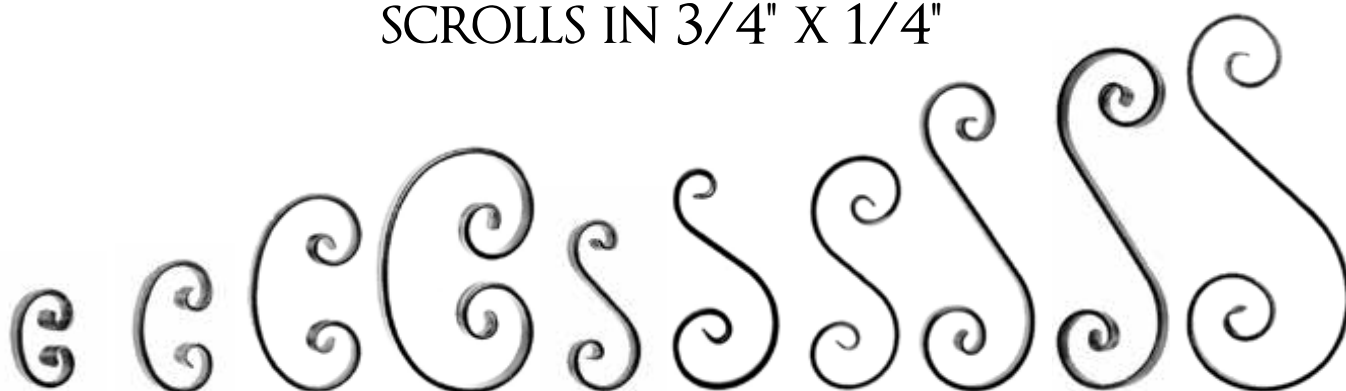
FORGED STEEL SCROLLS

SCROLLS IN 1/2" SQUARE BAR W/FLAT BUTTON ENDS



2-242	2-243	2-244	2-245	2-247	2-248	2-249	2-250
3" W x 4-3/4" H	3-1/2" W x 6" H	3-1/2" W x 6" H	5-1/8" W x 9-7/8" H	4-5/16" W x 11-7/16" H	4-5/16" W x 8-11/16" H	4-5/16" W x 14-3/4" H	4-5/16" W x 14-3/4" H

SCROLLS IN 3/4" X 1/4"



65/1	65/2	65/4	65/5	64/1	64/11	64/10	64/2	64/5	64/8
2-1/2" W x 4" H	3-1/4" W x 5-3/8" H	4-3/4" W x 8-3/8" H	7" W x 10-3/4" H	3-1/4" W x 7-1/2" H	4" W x 8-3/8" H	4" W x 12-3/8" H	5-1/4" W x 13-1/2" H	5" W x 14-3/8" H	7-1/2" W x 17-1/8" H

GROOVED EDGE SCROLLS IN 5/8" X 5/16"



Sample showing
grooved edge



66/14	66/11	66/8	66/9	66/16
3-3/8" W x 5-3/8" H	4-3/4" W x 8-3/8" H	3-1/4" W x 8-1/4" H	4-5/8" W x 9-1/4" H	4-5/8" W x 13-1/4" H

ALL DIMENSIONS ARE APPROXIMATE.

CAST STEEL LEAVES

Beautiful leaves to enhance all styles of iron work - all weldable in cast steel.



69/16

4-1/8" W x
9-1/4" H



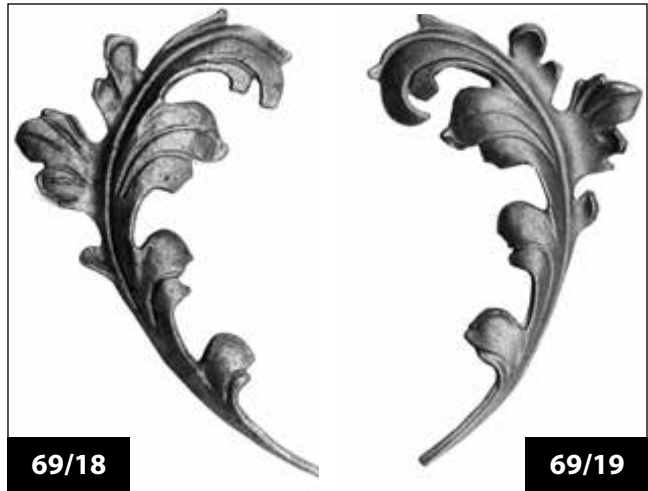
69/86

5-1/8" W x
9-13/16" H



11-331

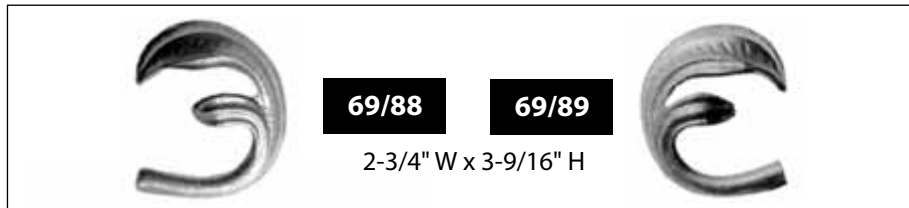
2-5/8" W x
11-13/16" H



69/18

69/19

6" W x 9-1/2" H, 1/4" thick



69/88

69/89

2-3/4" W x 3-9/16" H



Double
Faced

69/102

6-7/8" W x 5-3/4" H, 1" thick



69/20

69/21

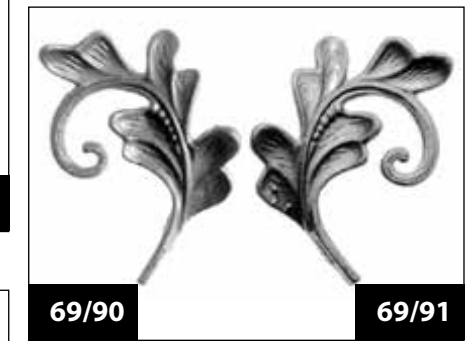
3-15/16" W x 8-11/16" H



69/22

69/23

4-3/4" W x 6-1/2" H



69/90

69/91

4-5/16" W x 5-1/2" H



69/24

69/25

3-3/8" W x 7-1/16" H



69/26

69/27

5-1/8" W x 7-7/8" H



69/92

69/93

2-9/16" W x 5-1/8" H

ALL DIMENSIONS ARE APPROXIMATE.

CAST STEEL LEAVES

Beautiful leaves to enhance all styles of iron work - all weldable in cast steel.



8-1/4" W x 7-7/8" H x 1/4" thick

69/125

4" W x 4-5/16" H
single sided



FR111

6-7/8" W x 4-3/4" H
single sided



11-128

3-1/2" W x
3-3/4" H,
single sided



69/99

4-3/4" W x
5-11/16" H
5/8" thick



75/8

2-3/8" W x
4-3/8" H
1/8" thick



76/15

3-1/4" W x
6-3/4" H
single sided



69/96



8-1/4" W x 7-7/8" H x 1/4" thick

69/126

7-1/16" W x
4-3/4" H



69/94

7-1/16" W x
4-3/4" H



69/95

5" H
1/4" thick



FDF305



3-15/16" W x 3-15/16" H x
1/4" thick

69/127



3-1/4" W x
11-1/2" H

69/87



76/17

1-9/16" W x 4-5/16" H
1/8" thick

76/18



76/10

2-3/4" W x 2-3/8" H
1/8" thick

76/11



3-15/16" W x 3-15/16" H x
1/4" thick

69/128



69/101

2" W x 2" H



69/97

6-5/16" W x
7-1/2" H



69/98

6-5/16" W x
7-1/2" H

ALL DIMENSIONS ARE APPROXIMATE.

CAST STEEL LEAVES AND FLOWERS

Beautiful leaves and flowers to adorn all styles of iron work.

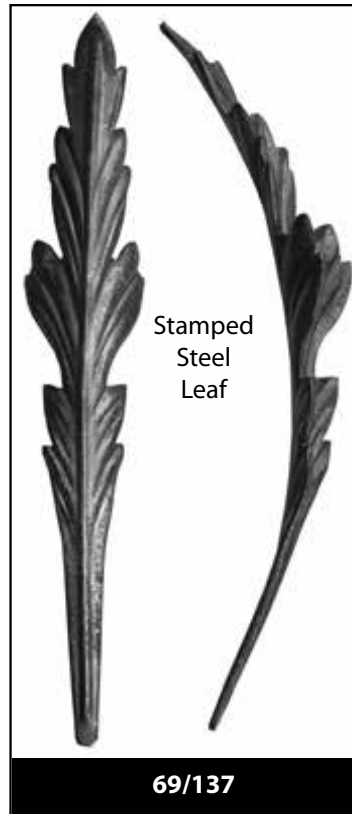
These lovely scroll panels use leaf 69/137 within the design.



Item 7-109/S



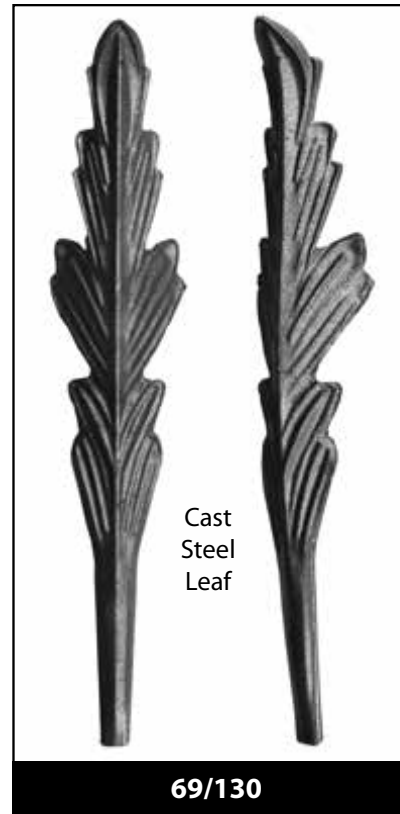
Item 7-113/D



Stamped
Steel
Leaf

69/137

2" W x 11" H,
1/16" thick



Cast
Steel
Leaf

69/130

2-3/16" W x 11-13/16" H
1/8" thick



Daffodil Trumpet

75/13

1-9/16" dia.



Daffodil Petal

75/14

3-9/16" dia.



Lilly

75/16

6-5/16" dia.



1-1/8" W x 5" H,
1/4" thick

69/129



1-3/16" W x
6-1/2" H

FAR181



2-3/8" W x
7-5/16" H

FAR232



75/12

3-9/16" W x 12-5/8" H
including stem



75/9

3-9/16" W x 12-3/16" H
including stem



75/10

4-3/4" W x 11-7/16" H
including stem

ALL DIMENSIONS ARE APPROXIMATE.

HEAVY STAMPED & FORGED STEEL LEAVES

Beautiful leaves to adorn all styles of iron work.



11-136

2" W x 11" H, 10 gauge



11-137

2" W x 11" H, 10 gauge



11-134

1-9/16" W x 6-5/16" H, 10 gauge

This lovely panel, item 14-34, uses item 11-133.

23-5/8" W x 29-17/32" H,
matl. size 1/2" Ø



11-133

1-9/16" W x 6-5/16" H, 10 gauge

FORGED STEEL LEAVES



692/8

4" W x 13" H,
4mm thick



Shown
692/8



692/9

2" W x 7" H,
4mm thick

ALL DIMENSIONS ARE APPROXIMATE.

HEAVY STAMPED BRASS LEAVES

Adorn all types of metal work with these brass leaves.



11-136-BR

2-3/4" W x 10-1/8" H, 10 gauge



11-137-BR

2-5/8" W x 11-3/4" H, 10 gauge



11-134-BR

1-7/8" W x 6-5/8" H, 10 gauge



11-133-BR

1-9/16" W x 6-1/8" H, 10 gauge



2-3/4" W x 2-3/8" H
4mm thick

1463/14

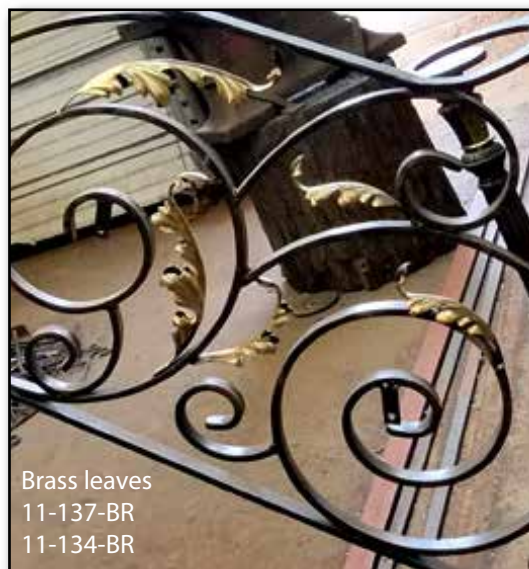
1463/15



1-9/16" W x 4-5/16" H
4mm thick

1463/16

1463/17

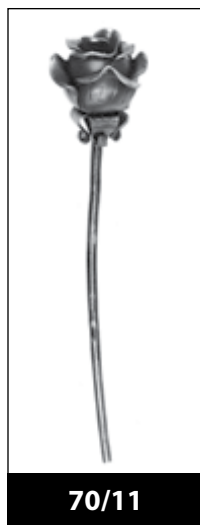


Brass leaves
11-137-BR
11-134-BR

ALL DIMENSIONS ARE APPROXIMATE.

ROSES AND LEAVES

FORGED ROSES & LEAVES



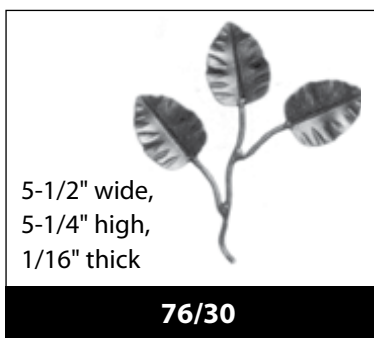
70/11

Approx. 2-3/8" dia. rose, 6-1/2" long



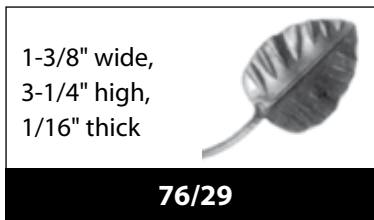
70/12

Approx. 1-1/2" dia. rose, 6-1/2" long



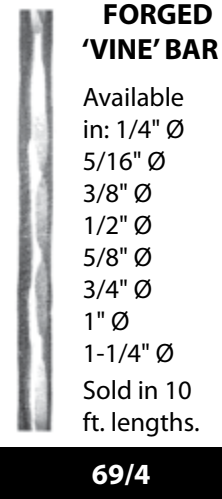
76/30

5-1/2" wide, 5-1/4" high, 1/16" thick



76/29

1-3/8" wide, 3-1/4" high, 1/16" thick



FORGED 'VINE' BAR

Available in: 1/4" Ø, 5/16" Ø, 3/8" Ø, 1/2" Ø, 5/8" Ø, 3/4" Ø, 1" Ø, 1-1/4" Ø
Sold in 10 ft. lengths.

69/4



FORGED WOOD GRAIN BAR

Available in: 3/8" Ø, 1/2" Ø, 5/8" Ø, 3/4" Ø, 1" Ø, 1-1/4" Ø, 1-1/2" Ø

Sold in 10 ft. lengths.

70/14

STAMPED ROSES & LEAVES



ITEM 71/2
Medium Rose Approx. 2-1/16" Ø

ITEM 71/3
Large Rose Approx. 2-11/16" Ø

ITEM 71/1
Small Rose Approx. 1-1/2" Ø



ROSE

Approx. 2-3/4" dia. rose 7-7/8" long



FRO 10

5-1/8" wide 5-1/2" high 1/16" thick



FRO 3

1-3/4" high 1/16" thick



FRO 5

2-3/8" high 1/16" thick



76/34

1" W x 2" H 22 Ga.



76/33

1-3/16" W x 2-15/16" H 22 Ga.



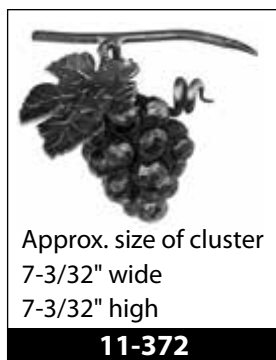
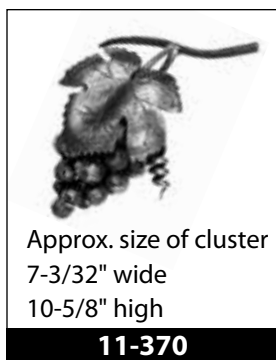
76/32

Approx. 1-3/4" W x 3-1/4" H 22 Ga.

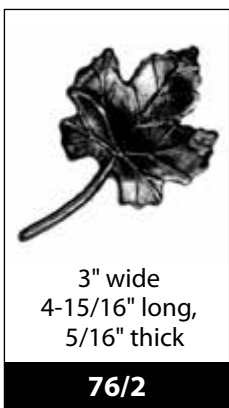
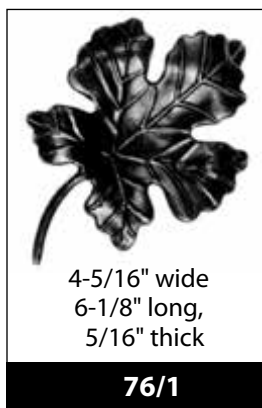


ALL DIMENSIONS ARE APPROXIMATE.

GRAPES AND GRAPE LEAVES



CAST STEEL GRAPE LEAVES



STAMPED GRAPE LEAF



FORGED 'VINE' BAR



Available in 1/4" Ø, 5/16" Ø, 3/8" Ø,
1/2" Ø, 5/8" Ø, 3/4" Ø, 1" Ø or 1-1/4" Ø.
Sold in 10 ft. lengths.

69/4

VINE TENDRILS



1/4" Ø, Approx.
8" long

73/13

VINE ACCESSORY

(not to scale)



Approx. 11-1/2" long.
Forged from
1/4" Ø bar.

73/2

SPIRAL

(not to scale)



Approx.
1-3/16" wide x
6" high
Forged from
3/16" Ø bar.

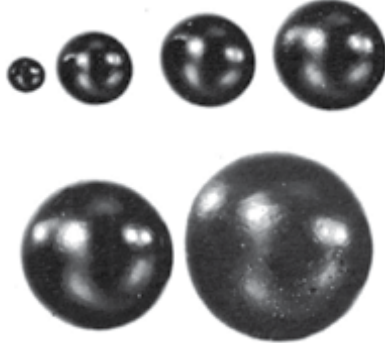
3-116

ALL DIMENSIONS ARE APPROXIMATE.

FORGED BALLS AND HOLLOW BALLS

All weldable.

FORGED STEEL BALLS 88/1



Sizes

1/2"	1-1/2"	3-1/2"
5/8"	2"	4"
3/4"	2-3/8"	4-7/8"
1"	2-3/4"	6"
1-1/4"	3-1/4"	

PLEASE NOTE THAT BALLS
CAN BE $\pm 1/16$

STAINLESS STEEL BALLS



SOLID
HOLLOW

AISI 304 Item	AISI 316 Item	Size	Thread
WK20	WK920	13/16"	M6
WK25	WK925	1"	M6
WK30	WK930	1-3/16"	M6
WK40	WK940	1-1/2"	M8
WK50	WK950	2"	M8
WK60	WK960	2-3/8"	M8
WK80	-----	3-1/8"	M10
WK100	WK9100	4"	M10
WK120	-----	4-3/4"	M10

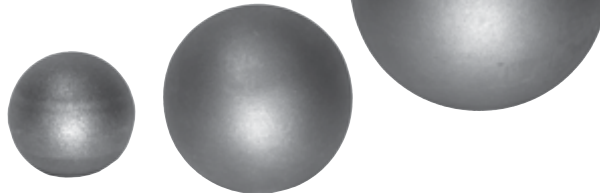
SQUASHED STEEL BALLS



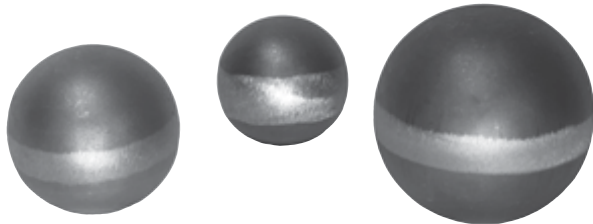
1-392-5	1-392-4	1-392-3	1-392-2	1-392-1	1-392
1-1/2" Ø	1-9/16" Ø	1-3/4" Ø	2-3/16" Ø	2-5/8" Ø	3-1/8" Ø
7/8" depth	1" depth	1-1/8" depth	1-3/8" depth	1-9/16" depth	2" depth

HOLLOW STEEL BALLS BY GRANDE FORGE

SPM27 1" Ø (26.9mm)	SPM120 4-3/4" Ø (120mm)
SPM33 1-5/16" Ø (33.7mm)	SPM153 6" Ø (153mm)
SPM42 1-5/8" Ø (42.4mm)	SPM203 8" Ø (203mm)
SPM48 1-15/16" Ø (48.3mm)	
SPM60 2-3/8" Ø (60.3mm)	
SPM76 3" Ø (76.1mm)	
SPM89 3-1/2" Ø (88.9mm)	
SPM101 4" Ø (101.6mm)	



HOLLOW STEEL BALLS



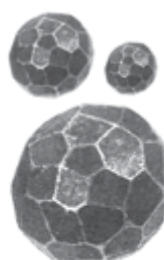
1-394-1	1-9/16" Ø (40mm)
1-394-2	2" Ø (50mm)
1-394-4	2-3/4" Ø (70mm)
1-394-6	3-15/16" Ø (100mm)
1-394-8	5-15/16" Ø (150mm)

HOLLOW STEEL HEMISPHERES



1-395-1	1-9/16" Ø
1-395-2	2" Ø
1-395-4	2-3/4" Ø
1-395-6	3-15/16" Ø
1-395-8	5-15/16" Ø

STEEL DIAMOND BALLS



1-396-3	3/4" Ø
1-396-4	1" Ø
1-396-7	1-9/16" Ø
1-396-8	2" Ø
1-396-10	2-3/4" Ø
1-396-13	3-15/16" Ø

SOLID BRASS BALLS

Full bodied brass balls with a threaded hole. Polished and lacquered. Items for indoor use only.

KL 15	9/16" Ø	M6
KL 20	3/4" Ø	M6
KL 25	1" Ø	M6
KL 30	1-3/16" Ø	M8
KL 40	1-9/16" Ø	M10



HOLLOW BRASS BALLS

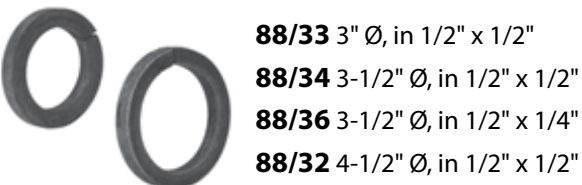
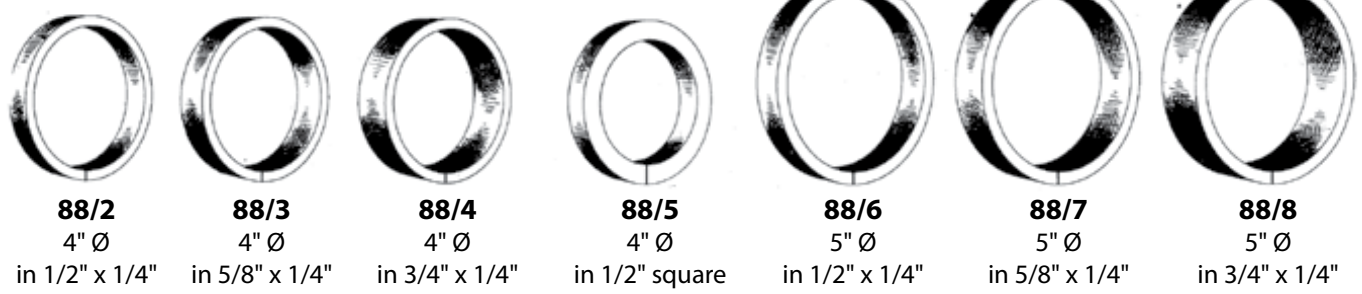
Hollow brass balls with a threaded hole. Polished and lacquered. Items for indoor use only.

KL 50	2" Ø	M10
KL 75	3" Ø	M10
KL 100	3-15/16" Ø	M12
KL 130	5-1/8" Ø	M12

ALL DIMENSIONS ARE APPROXIMATE.

DECORATIVE CIRCLES AND OVALS

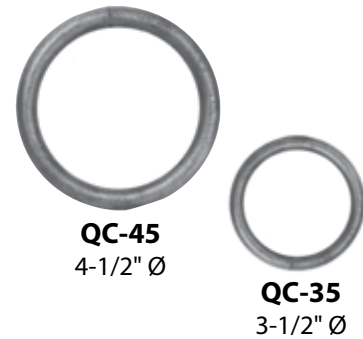
FORGED STEEL RINGS



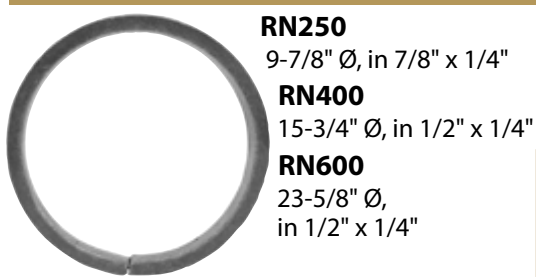
1/2" SQ. STEEL TUBE



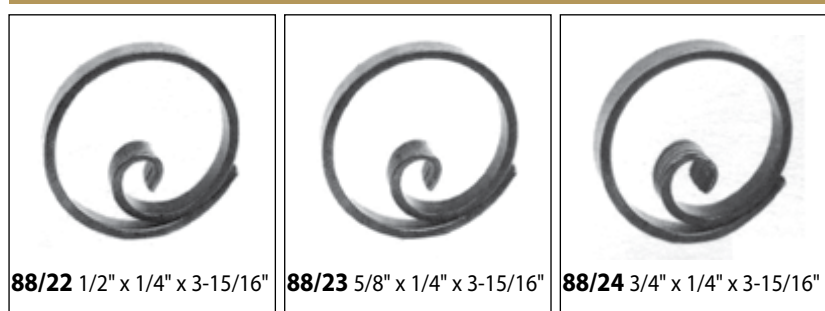
1/2" Ø STEEL TUBE



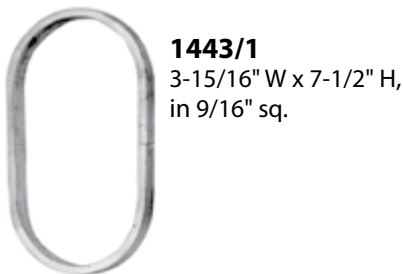
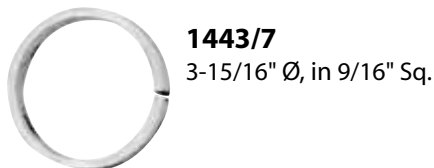
LARGE DIAMETER CIRCLES



SCROLLED CIRCLES WITH FISHTAIL ENDS



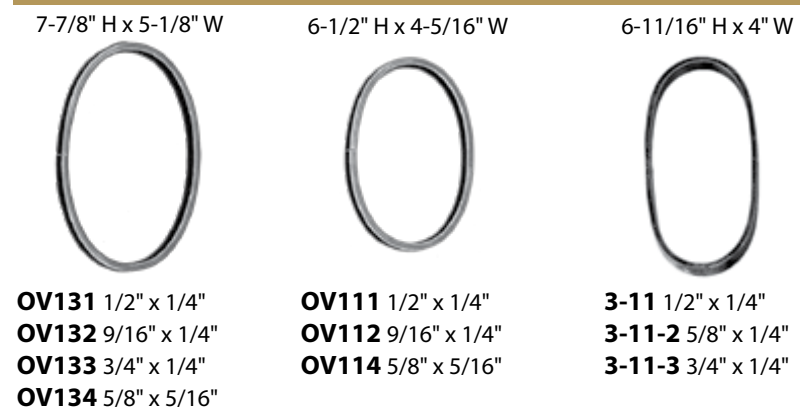
ALUMINUM CIRCLES



DECORATIVE CAST STEEL CIRCLES



HOT FORMED OVALS



ALL DIMENSIONS ARE APPROXIMATE.

CAGES AND OTHER DECORATIVE ELEMENTS



**ROUND
CAGE**



15/17

2-3/4" x
2-3/4"



15/1

1/2" sq. end
5-1/8" H x
2-3/8" W



15/3

5/8" sq. end
5-3/4" H x
2-9/16" W



15/4

3/4" sq. end
6-1/2" H x
3-1/8" W



15/2

3/4" sq. end
5-1/2" H x
3-1/8" W



15/6

1" sq. end
7-1/16" H x
3-1/4" W

3-126

1-1/4" sq. end
9-13/16" H x
4-5/16" W

ALUMINUM



772/8

9/16" sq. end
2-3/8" W
5-1/8" H

772/9

1" sq. end
3-3/4" W
7-1/16" H

1443/13

5/8" sq. end
2-31/32" W
5-7/8" H

BRASS



160/L/1

1/2" sq. end
2-3/4" W
6" H

160/L/2

5/8" sq. end
2-3/4" W
6" H

1466/10

3/4" sq. end
3-1/2" W
6-11/16" H

DRIP TRAYS

Plain drip trays available in the following sizes:

79/10 2" Ø x 1 mm thick

79/11 2-3/4" Ø x 1 mm thick

79/8 3-15/16" Ø x 1 mm thick

79/12 4-3/4" Ø x 1 mm thick

79/13 5-1/2" Ø x 1 mm thick



CANDLE HOLDERS



1¹¹/₃₂" H x 1¹/₂" W
Inside diameter 1¹⁵/₃₂"

78/1



1¹¹/₃₂" H x 1⁹/₃₂" W
Inside diameter 1³/₁₆"

78/5



1³/₈" H x 1¹/₄" W
Inside diameter 1³/₁₆"

78/4

CAST BRONZE BOBECHEs / CANDLE CUPS -Threaded 1/8IP



MDC05.057

2-3/4" W x 2-1/2" H



MDC05.141

1-1/4" W x 2-3/8" H



MDC05.142

1-1/2" W x 2" H



MDC05.140

1-5/8" W x 1-1/2" H

CAST BRONZE ACCENT FACES



MDC05.001

2-1/2" W x 3-3/8" H



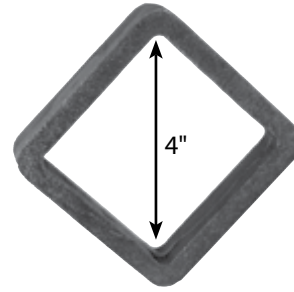
MDC05.032

1-7/8" W x 3-1/8" H

ALL DIMENSIONS ARE APPROXIMATE.

DECORATIVE ELEMENTS

GATE DIAMONDS



88/20

4" wide
Material 3/4" x 5/16"

DECORATIVE CAST BRONZE BANDING



MDC05.070

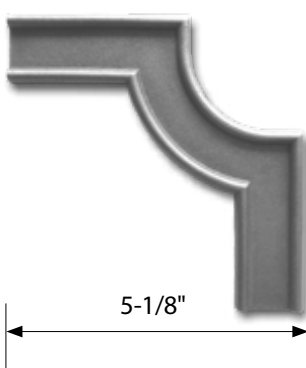
12" W x 7/8" H



MDC05.136

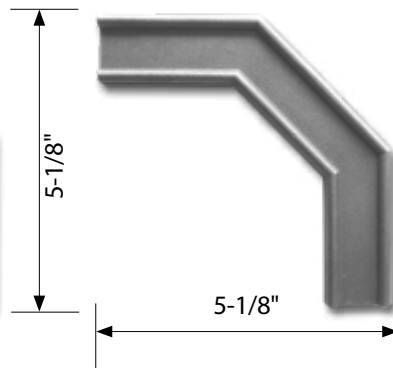
13-1/2" W x 7/8" H

DECORATIVE STEEL BANDING



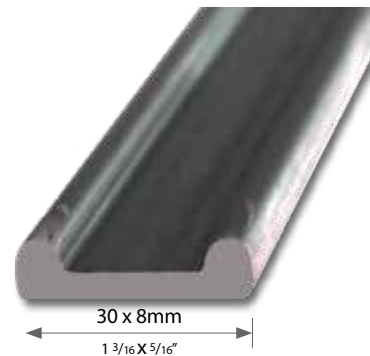
BCLA38

1-3/16" x 5/16" Material
5-1/8" W x 5-1/8" H



BCLB38

1-3/16" x 5/16" Material
5-1/8" W x 5-1/8" H



BCL38

1-3/16" x 5/16" Material
9'10" Long

ALL DIMENSIONS ARE APPROXIMATE.

DECORATIVE ELEMENTS

Beautiful letters for house, pub or commercial nameplates.


Our standard font is 'Century Old Style BT' — available in six different sizes.

Easy to order, just quote the code number of the letter size required from the table below, and state which letters or numbers you need. **Custom sizes and fonts available upon request.**

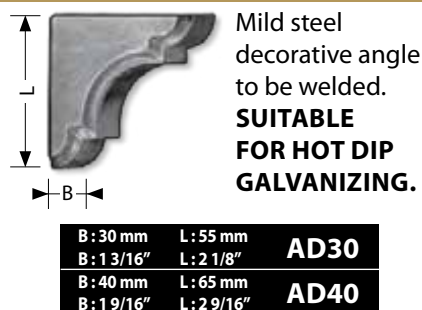
ABCDEFGHIJKLMNOPQRSTUVWXYZ 0123456789 &

SIZE	3" high 1/4" thick	4" high 1/4" thick	6" high 1/4" thick	8" high 1/4" thick	10" high 1/4" thick	12" high 1/4" thick
Order Code	98/5	98/1	98/7	98/8	98/9	98/10

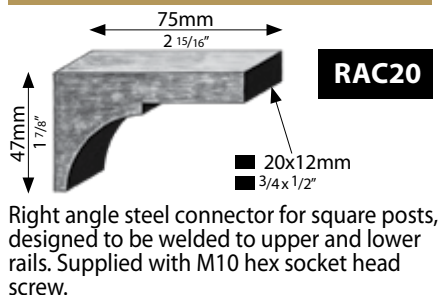
RIVETS

- 12-67-3** 1" long
D1: 3/8"
D2: 1/4"
- 12-68-3** 1-3/8" long
D1: 1/2"
D2: 5/16"
- 12-69-4** 1-1/2" long
D1: 5/8"
D2: 3/8"
- 

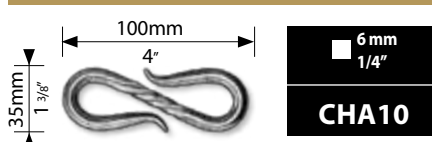
DECORATIVE ANGLE



STEEL CONNECTOR

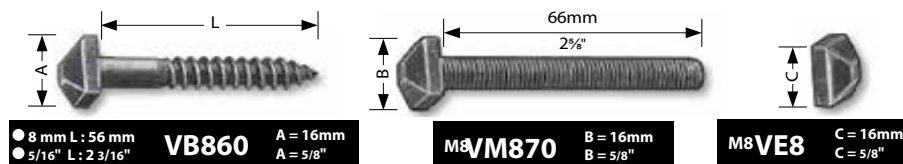


STEEL LINK OF CHAIN

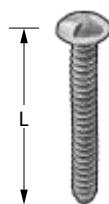


FORGED DECORATIVE SCREWS AND NUTS

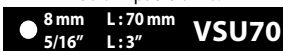
Maximum torque is 18N.m. - **Sold in packages of 10**



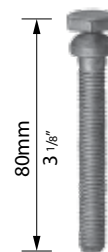
One way security screw, heat threaded (5/16" x 3").
Unscrewing will be impossible.



Sold in packs of 10.



This is a security lock screw once the hexagonal head has been broken off.



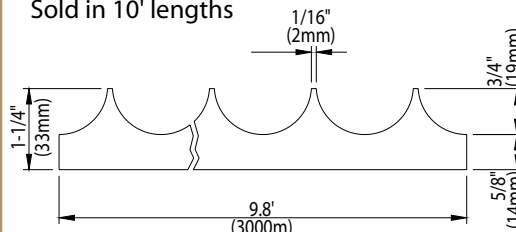
Sold in packs of 10.



GALVANIZED STEEL ANTI-THEFT RACK / LOAFER RAIL

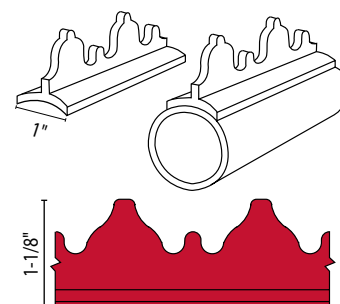


Sold in 10' lengths



4445

Sold in 20' lengths



ALL DIMENSIONS ARE APPROXIMATE.

LARGE HAND FORGED HANDLES

MORE
HANDLES CAN BE
SEEN ON OUR
WEBSITE



AFH003

3-1/4" wide x 24" high
14" center to center
of leaves
4-1/2" deep



AFH001

1" wide x 26" high
18-1/2" center to center
for mounting bolts
Bolt is 4" long

AFH004

3" wide x 24-1/2" high
20-1/2" center to center
of leaves
4-3/4" deep



AFH002

7" wide x 39" high
24" center to center
of handle
5-1/2" deep

Copyright:
Yuri Chernyavsky

ARTEFERRO

ALL DIMENSIONS ARE APPROXIMATE.

HOME DECOR COLLECTION

HAND FORGED HANDLES



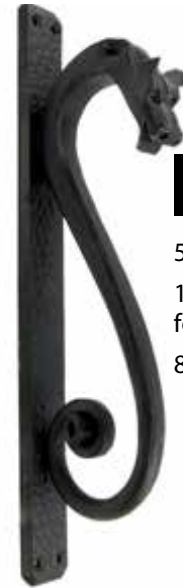
12-29

2-3/8" wide x 14-11/16" high
15-5/8" center to center for mounting holes
6.5mm diameter holes



12-30

3" wide x 14" high
10-3/8" center to center for mounting holes
6.5mm diameter holes



12-32

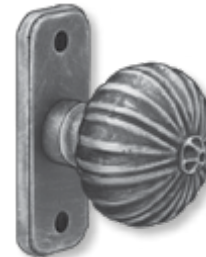
5-7/8" wide x 18-7/8" high
17-5/16" center to center for mounting holes
8.5mm diameter holes

WINE RACK



WRK7

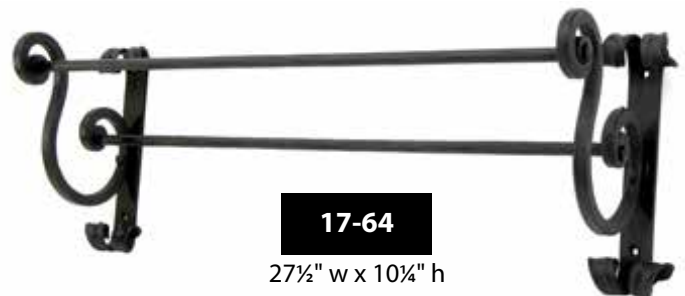
Painted & patinated wine rack.
Holds 18 bottles of wine.
27" w x 39" h x 8" d



SEP8

3-1/2" tall back plate
2-5/8" center to center for mounting holes
2-5/16" pull knob
unpainted

TOWEL RACK



17-64

27½" w x 10¼" h

COAT/HAT RACK



17-61-1

26" w x 4" h x 3¼" d

ALL DIMENSIONS ARE APPROXIMATE.

HOME DECOR COLLECTION

UMBRELLA STAND



17-62

9½" w x 20½" h

HAND FORGED PLANT HANGERS



17-119

12½" w x 12¼" h



17-120

9" w x 11¹³/₁₆" h

HAND FORGED HOOKS



17-69

4¾" w x 6" h



17-72

2¾" w x 5½" h

CANDLE HOLDER



Candle not included.

17-105

8¾" w x 2³/₁₆" h

BOTTLE OPENERS



BHB001

3½" long



BHB003

4½" long



BHB005

4¾" long



BHB002

5" long



BHB004

6½" long



BHB006

5" long

ALL DIMENSIONS ARE APPROXIMATE.

FLOWER PANELS



40/40A and 40/40C

21-5/8" diameter
40/40A: Unpainted
40/40C: Painted and Galvanized



40/42A and 40/42C

21-5/8" diameter
40/42A: Unpainted
40/42C: Painted and Galvanized



40/43A and 40/43C

21-5/8" diameter
40/43A: Unpainted
40/43C: Painted and Galvanized



40/45A and 40/45C

21-5/8" diameter
40/45A: Unpainted
40/45C: Painted and Galvanized



40/47A and 40/47C

21-5/8" diameter
40/47A: Unpainted
40/47C: Painted and Galvanized



40/49A and 40/49C

21-1/4" wide x 27-3/16" high
40/49A: Unpainted
40/49C: Painted and Galvanized



40/50A and 40/50C

20-7/8" wide x 27-3/16" high
40/50A: Unpainted
40/50C: Painted and Galvanized



40/51A and 40/51C

20-7/8" wide x 27-3/16" high
40/51A: Unpainted
40/51C: Painted and Galvanized



40/53A and 40/53C

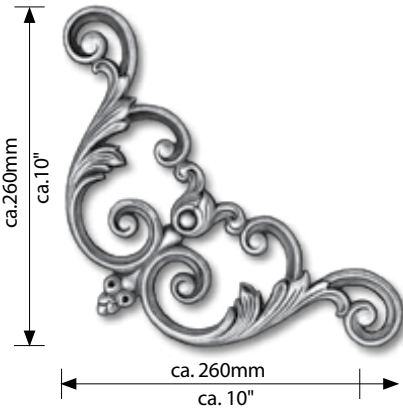
20-7/8" wide x 27-3/16" high
40/53A: Unpainted
40/53C: Painted and Galvanized

ALL DIMENSIONS ARE APPROXIMATE.

DOUBLE FACED STEEL CASTINGS BY GRANDE FORGE

Decorative double-faced steel castings, with 16x8 mm (5/8" x 5/16") steel framing. Steel castings will shrink during the cooling process. As a result expect some variance in each casting from the dimensions shown in the catalog.

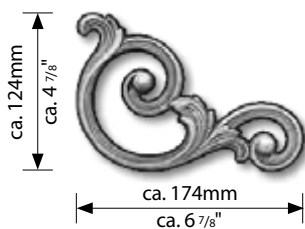
SUITABLE FOR WELDING AND GALVANIZING



FDF27



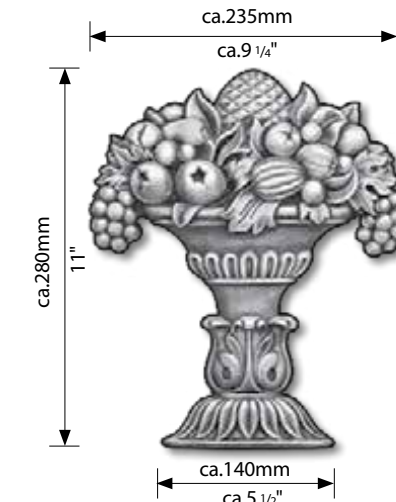
FDF24



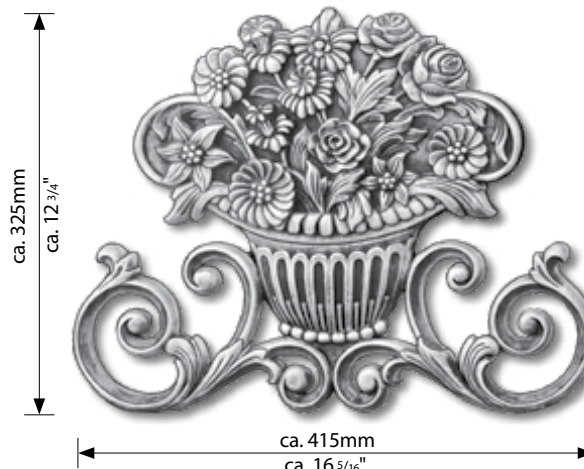
FDF18



FDF33



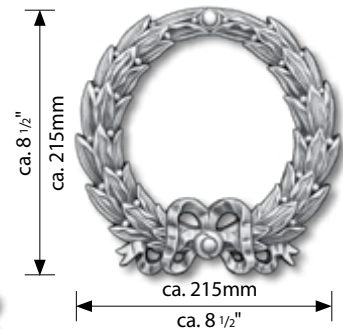
FDF76



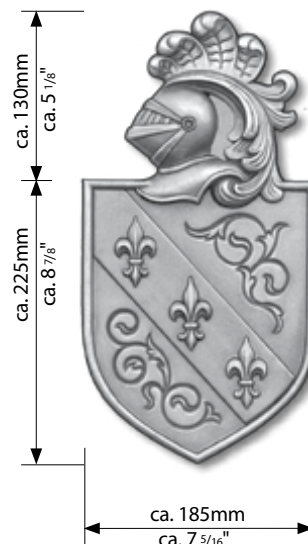
FDF40



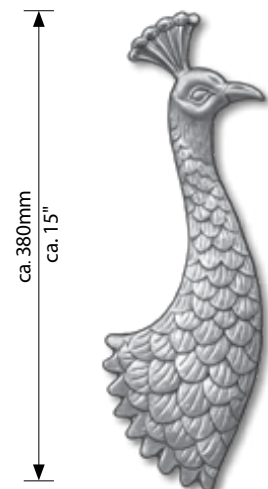
FDF75



FDF23



FDF22



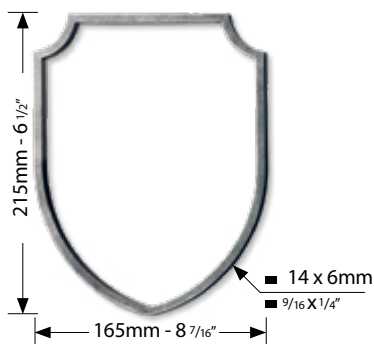
FDF38

grande forge

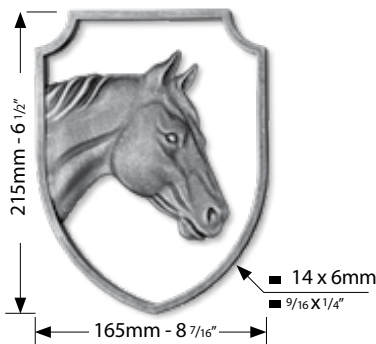
ORNAMENTAL
METALS

ALL DIMENSIONS ARE APPROXIMATE.

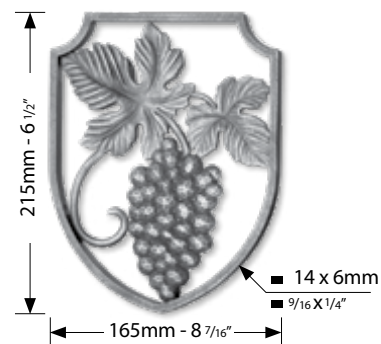
DOUBLE FACED STEEL CASTINGS BY GRANDE FORGE



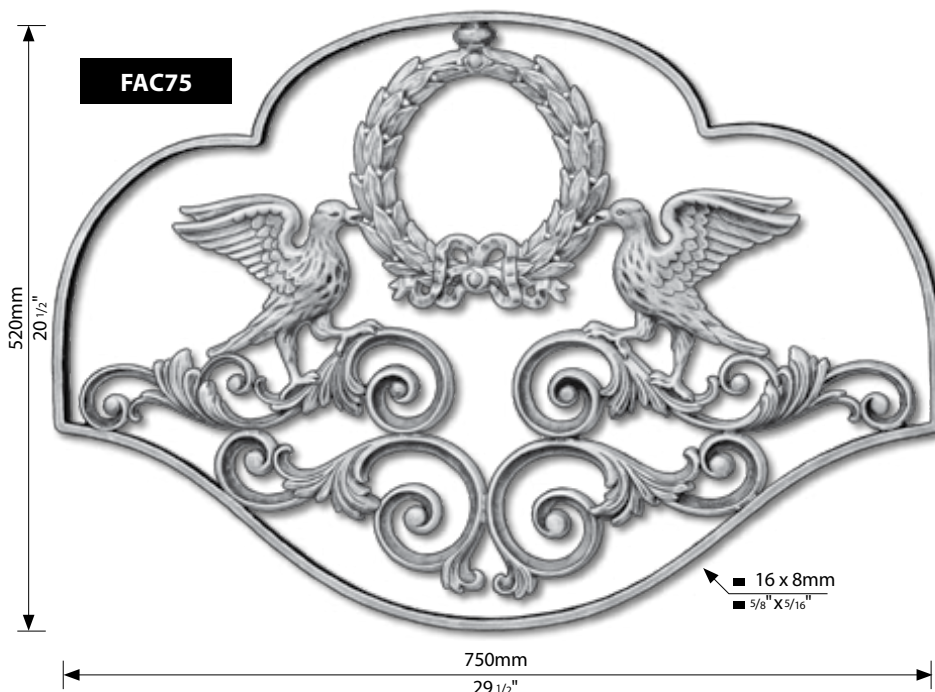
FAC50



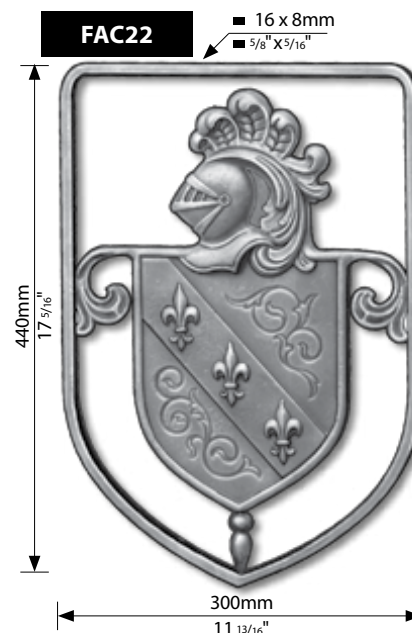
FAC51



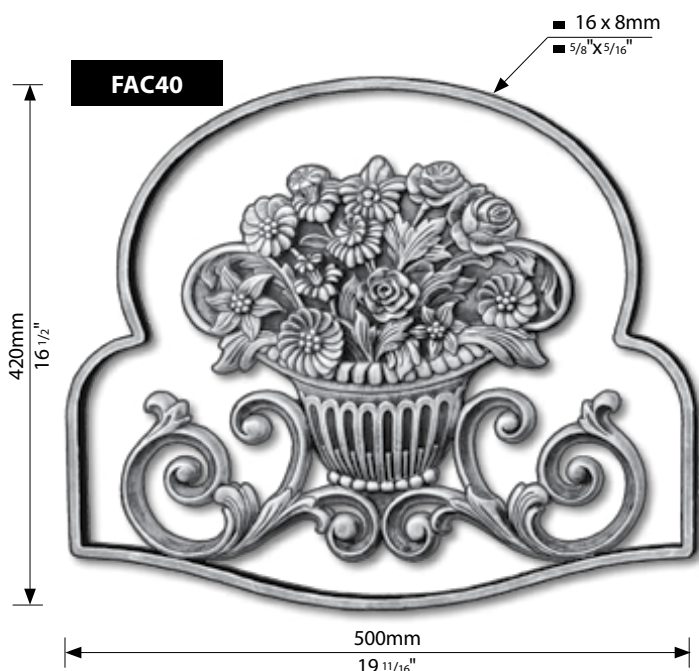
FAC52



FAC75



FAC22



FAC40

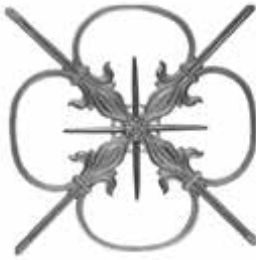


FAC23

ALL DIMENSIONS ARE APPROXIMATE.

ORNAMENTAL CAST IRON PANELS

(SBO)=Side backed out (concave on back) (SF)=Single faced (no design on back)
All castings double faced unless otherwise specified.



8501

19" W x 19" H



626 (SF)

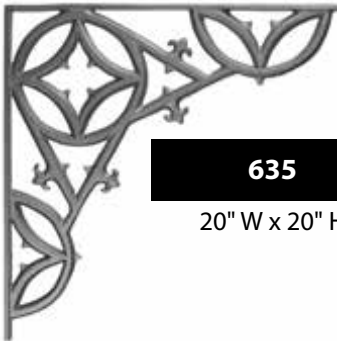
21¾" W x 16¾" H
½" Thick



8656

24¾" W x 22¼" H

BRACKETS



635

20" W x 20" H



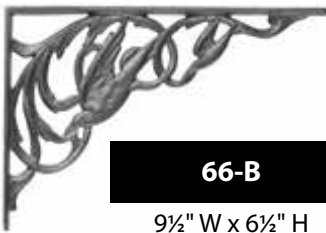
6921

14½" W x 22½" H



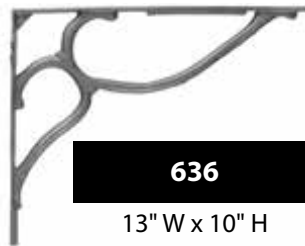
67-A

17½" W x 8½" H



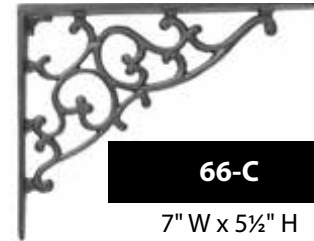
66-B

9½" W x 6½" H



636

13" W x 10" H



66-C

7" W x 5½" H



66

12" W x 8" H



66-S

13" W x 6½" H



9140

20½" W x 9" H

ALL DIMENSIONS ARE APPROXIMATE.

ORNAMENTAL IRON VALANCES/INSERTS

(SBO)=Side backed out (concave on back) (SF)=Single faced (no design on back)
All castings double faced unless otherwise specified.



7378 (SF)

23 $\frac{3}{8}$ " W x 4 $\frac{1}{2}$ " H



9081 (SF)

15" W x 5" H



9468

15 $\frac{3}{4}$ " W x 2 $\frac{3}{4}$ " H



A-2

25 $\frac{5}{8}$ " W x 4 $\frac{1}{8}$ " H



A-3

31 $\frac{3}{8}$ " W x 4 $\frac{1}{8}$ " H



1347

31 $\frac{1}{2}$ " W x 4 $\frac{1}{4}$ " H



1348

31 $\frac{1}{2}$ " W x 5" H



9048

18 $\frac{3}{8}$ " W x 4 $\frac{1}{4}$ " H



7314

14 $\frac{7}{8}$ " W x 3 $\frac{3}{4}$ " H



1345

33 $\frac{3}{4}$ " W x 5" H



9347 (SF)

8 $\frac{5}{8}$ " W x 15" H



9345 (SF)

7 $\frac{1}{2}$ " W x 18" H



9346 (SF)

8" W x 20 $\frac{1}{2}$ " H



9360 (SF)

11 $\frac{1}{2}$ " W x 22" H

ALL DIMENSIONS ARE APPROXIMATE.

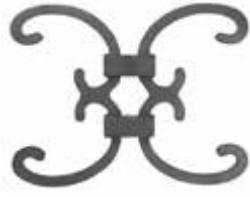
ORNAMENTAL IRON PICKET CASTINGS

FITS OVER 1/2"



143

5 3/4" W x 4 3/4" H



679-XL

8 3/4" W x 6 1/2" H



679

4" W x 4" H



147-XS

5 1/4" W x 4" H



19

7 3/4" W x 15 1/2" H



32

8 3/4" W x 16 3/4" H



34

8 3/4" W x 10 3/4" H



35

8 3/4" W x 15 1/2" H



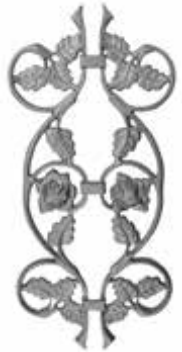
39

8" W x 15 1/2" H



60-X

8 3/4" W x 15 1/2" H



76

7 3/4" W x 16 3/4" H



76-S

7 3/4" W x 11 3/4" H



144

7 3/4" W x 13" H



858

8 1/2" W x 15 3/4" H



30

7 1/4" W x 14 1/2" H



30-X

6 1/2" W x 14 3/8" H



145

6 1/4" W x 7 3/4" H



8332

5 3/4" W x 14 3/4" H



146

6 1/2" W x 12 1/2" H



147

8 3/8" W x 18" H



8330

7" W x 18" H



8333

6 3/4" W x 17" H

ALL DIMENSIONS ARE APPROXIMATE.

ORNAMENTAL IRON PICKET CASTINGS

FITS OVER 1/2"



33

8" W x 15" H

33-E

6¾" W x 13" H

33-XS

6" W x 12" H



641

7¾" W x 17½" H

641-E

6½" W x 16¾" H



639

3" W x 8" H



31-XL

8½" W x 10¼" H



31

8¼" W x 11¼" H



95

7" W x 14½" H



35-B

8" W x 16½" H

FITS OVER 5/8"



7837

7¾" W x 11½" H



7836

7¼" W x 5¾" H

FITS OVER 3/4"



33-XL

8¾" W x 15" H



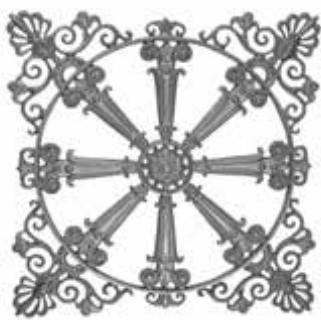
641-XL

7½" W x 17¼" H

ALL DIMENSIONS ARE APPROXIMATE.

DECORATIVE CIRCLES AND WASHERS

(SBO)=Side backed out (concave on back) (SF)=Single faced (no design on back)
All castings double faced unless otherwise specified.



618-A (SF)

21" W x 21" H



617 (SF)

22¼" Ø



619 (SBO)

17½" Ø



7510 (SF)

15" Ø



8325

10½" Ø
½" thick



8334 (SF)

10" Ø
½" thick
1½" hole



8670 (SF)

9¾" Ø
⅝" thick
1½" hole



8675 (SF)

9⅞" Ø
1" thick
⅞" hole



8609 (SF)

6" Ø
½" thick
1½" hole

GRATES, VENTS AND GRILLES



4½" depth

698

22" W x 14" H



4¼" depth

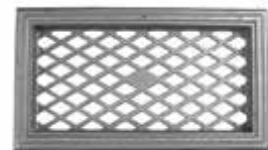
698-XS

17" W x 12" H



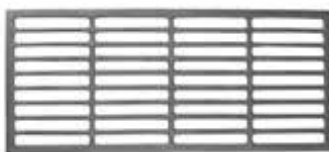
698-F-CI

21½" W x 13¾" H
cast iron



699

17½" W x 9½" H
grid size: ⅞" x 1½"



706

15¾" W x 6⅞" H
grid size: ½" x 3½"



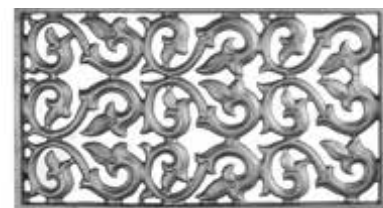
706-XL

17¼" W x 12¼" H
grid size: ½" x 16"



9476 (SF)

12½" W x 6½" H
1/4" thick



708 (SF)

20¼" W x 11¼" H

ALL DIMENSIONS ARE APPROXIMATE.

ORNAMENTAL IRON CASTINGS - FURNITURE LEGS

Queen Anne



9931-L

22-1/4" H

9930-L

15" H

TOP - 1-1/4" Sq. beveled
FOOT - 1" Sq.

Gothic



9941-L

22" H

9942-L

27" H

TOP - 90° triangular
inset slot which accepts
3/4" H x 1-1/4" W x 3/4" D
FOOT - 1-1/8" Sq. pad

Hammered effect



9958

15-1/2" H

9957

21" H

9956

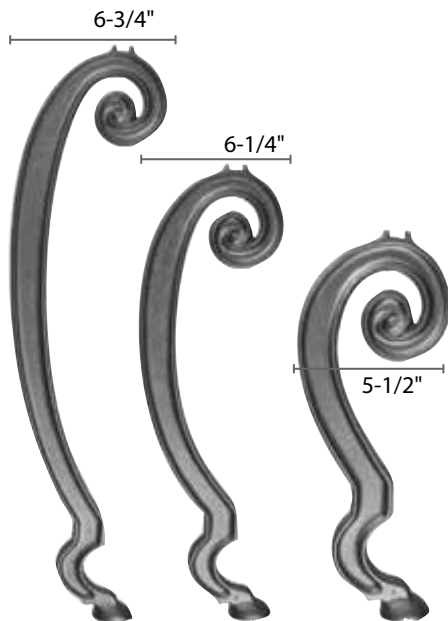
24" H

9955

28" H

TOP - 1-1/4" Sq.
FOOT - 1" Sq.

Ram Horn



9965

28" H

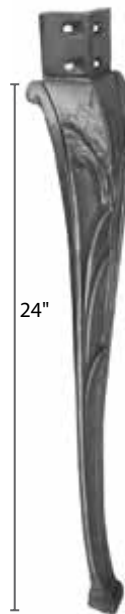
9966

21" H

9967

14-1/4" H

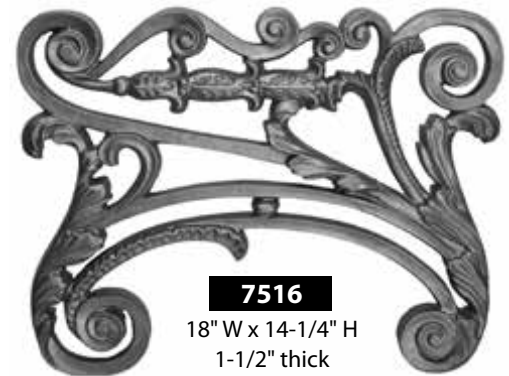
Sculpted Leaf



9970

26-1/4" H

4-3/4" W



7516

18" W x 14-1/4" H

1-1/2" thick



9477

5" W x 15-3/8" H

3/4" thick, 2" x 1-1/4" base

Use as leg, under-glass design, etc.

ALL DIMENSIONS ARE APPROXIMATE.

ORNAMENTAL IRON CASTINGS

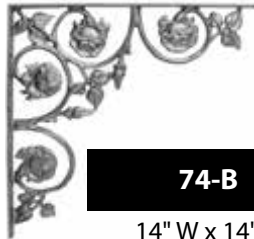
ROSE

(SBO)=Side backed out (concave on back) (SF)=Single faced (no design on back)
All castings double faced unless otherwise specified.



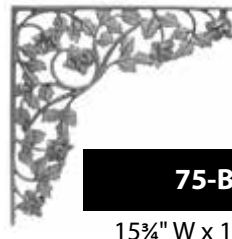
75-A

21½" W x 21½" H



74-B

14" W x 14" H



75-B

15¾" W x 15¾" H



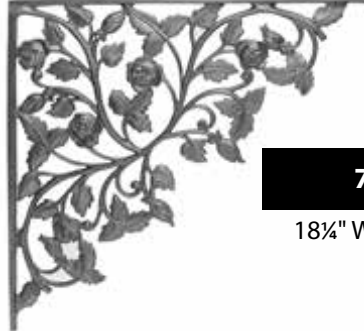
78-B

14" W x 14" H



70

18" W x 9½" H



74-X

18¼" W x 18¼" H



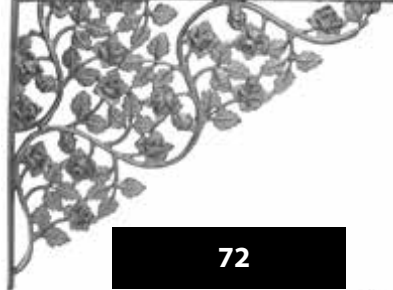
74-A

16" W x 16" H



8370

18¾" W x 11¾" H



72

23¼" W x 19½" H



73

26¼" W x 5½" H



79

19" W x 2¾" H



75

7" W x 27" H



74-C

8" W x 28" H



79-C

10" W x 25" H



78-A

8" W x 25½" H



79-A

7" W x 21¾" H



78-AX

7¾" W x 16¼" H

ALL DIMENSIONS ARE APPROXIMATE.

ORNAMENTAL IRON CASTINGS

ROSE

(SBO)=Side backed out (concave on back) (SF)=Single faced (no design on back)
All castings double faced unless otherwise specified.



77

8" W x 8" H



688 (SF)

8½" Ø



9071

Rose
5½" W x 4½" H



701

8" W x 4¼" H



9070 (SBO)

12" W x 9¾" H



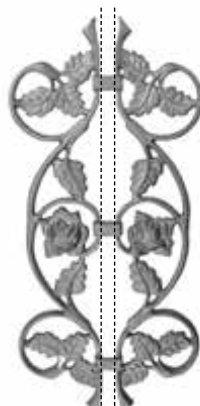
74

8½" W x 14½" H



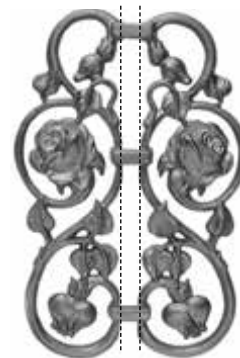
8301

8" W x 20¼" H
rose vine



76

7¾" W x 16¾" H
Fits over 1/2" sq.



76-S

7¾" W x 11¾" H
Fits over 1/2" sq.



71

10¾" W x 27¼" H



687 (SBO)

12½" W x 27½" H



615 (SF)

7¾" W x 28¼" H



9078

8½" W x 21¼" H
rose and berry



9073

8¾" W x 28½" H
rose and berry



9077 (SBO)

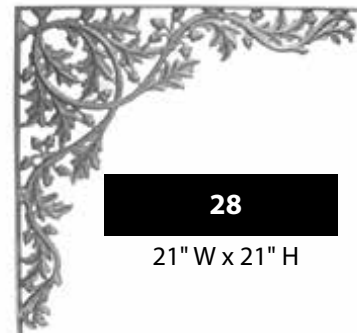
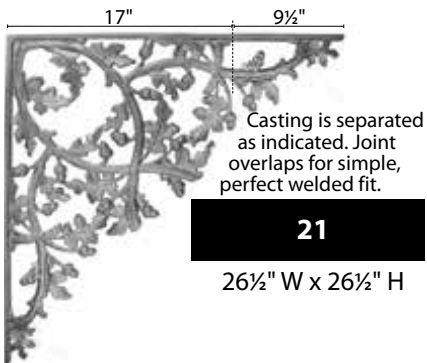
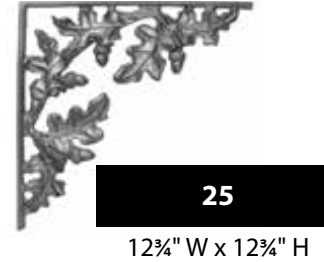
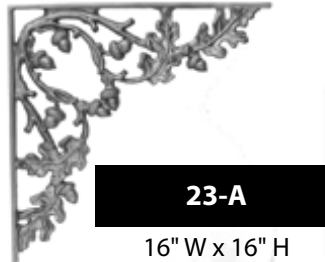
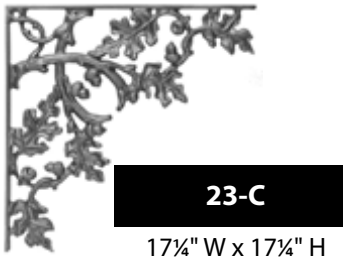
12¼" W x 28¾" H
rose and berry

ALL DIMENSIONS ARE APPROXIMATE.

ORNAMENTAL IRON CASTINGS

OAK

(SBO)=Side backed out (concave on back) (SF)=Single faced (no design on back)
All castings double faced unless otherwise specified.



ALL DIMENSIONS ARE APPROXIMATE.

ORNAMENTAL IRON CASTINGS

OAK

(SBO)=Side backed out (concave on back) (SF)=Single faced (no design on back)
All castings double faced unless otherwise specified.



29-A

17½" W x 4½" H



24

20¼" W x 2½" H



27-B

22¾" W x 4¼" H



27-A

23" W x 4¼" H



25-A (SBO)

25½" W x 6½" H



8659

9¼" W x 33½" H



1305

7½" W x 33" H



29

8" W x 27¼" H



L-411

12¼" W x 16¼" H



26-A (SBO)

8½" W x 12" H



L-422

8¼" W x 11½" H
continuous
design panel



26

8½" W x 11" H
starter panel for
continuous design



222-A

9" W x 15" H



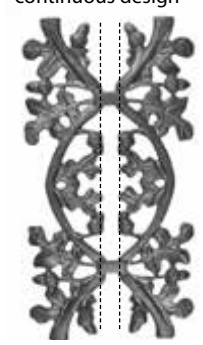
22-A (SBO)

8" W x 23" H



L-423

8¼" W x 20½" H
continuous
design panel



39-LAW

8" W x 15½" H
Fits over 1/2" sq.



222-AXL

8½" W x 27" H



24-A (SBO)

11½" W x 26" H



L-424

12" W x 27¼" H



9923

9¼" W x 27" H

ALL DIMENSIONS ARE APPROXIMATE.

ORNAMENTAL IRON CASTINGS

VINEYARD

(SBO)=Side backed out (concave on back) (SF)=Single faced (no design on back)
All castings double faced unless otherwise specified.



16

16" W x 9½" H



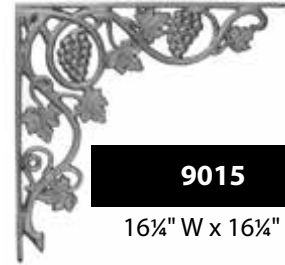
14-A

15½" W x 12" H



10-A

15½" W x 15½" H



9015

16¼" W x 16¼" H



101

7" W x 4½" H



9010

10" W x 3½" H



15

17" W x 4" H



14

8" W x 8" H



9014

7¼" W x 26¼" H



9019

11½" W x 26¼" H



9011

8¾" W x 25" H



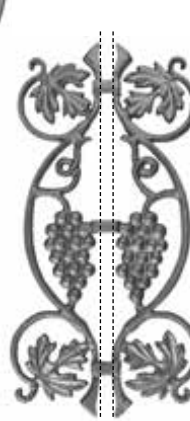
13-B

9" W x 22¼" H



11

7½" W x 22" H



19

7½" W x 15¼" H
Fits over 1/2" sq.



9132

8¾" W x 14¾" H



12

7½" W x 28" H



17

7½" W x 29" H



13

7¾" W x 29" H



9012

9¾" W x 26½" H



9017 (SBO)

11½" W x 28" H



9013 (SBO)

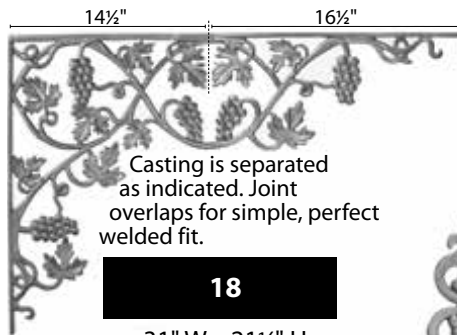
9¾" W x 29½" H

ALL DIMENSIONS ARE APPROXIMATE.

ORNAMENTAL IRON CASTINGS

VINEYARD

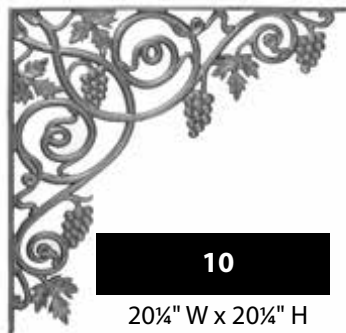
(SBO)=Side backed out (concave on back) (SF)=Single faced (no design on back)
All castings double faced unless otherwise specified.



Casting is separated as indicated. Joint overlaps for simple, perfect welded fit.

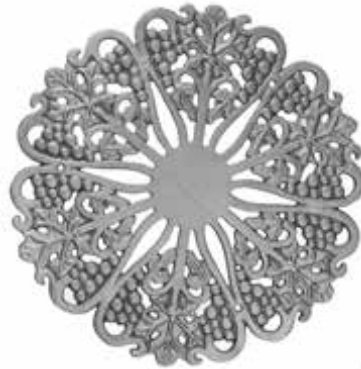
18

31" W x 21 1/4" H



10

20 1/4" W x 20 1/4" H



14-XL

20" Ø



15-A

26" W x 6" H



15-X

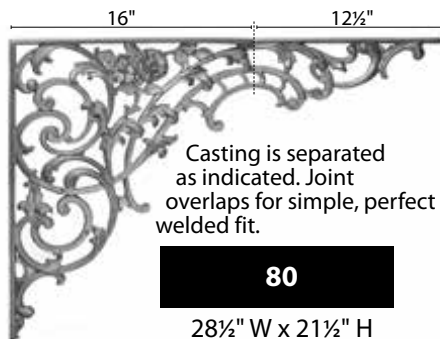
21 1/2" W x 4 1/4" H



9018

27 1/2" W x 6" H

BIRD OF PARADISE



Casting is separated as indicated. Joint overlaps for simple, perfect welded fit.

80

28 1/2" W x 21 1/2" H



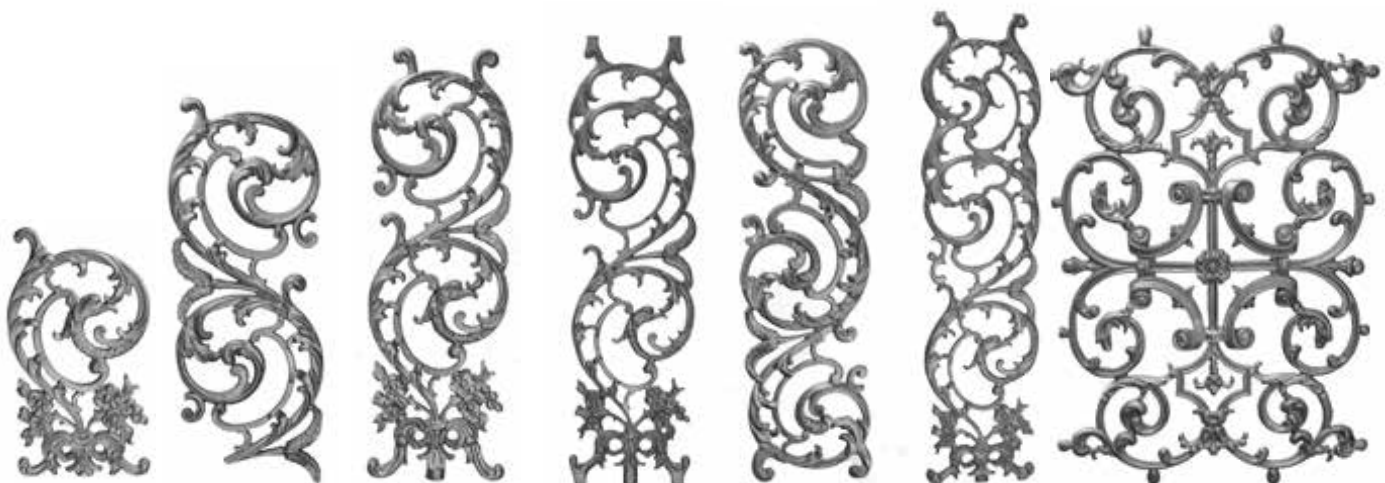
80-A

24 1/4" W x 12" H



9066

23" W x 8 1/4" H



81

82

85

1325

9085

1327

6317 (SBO)

8 1/2" W x 15 1/2" H

8 1/2" W x 22 1/2" H

8 1/2" W x 25" H

7 3/4" W x 28 1/2" H

8 1/2" W x 30" H

8" W x 33 1/4" H

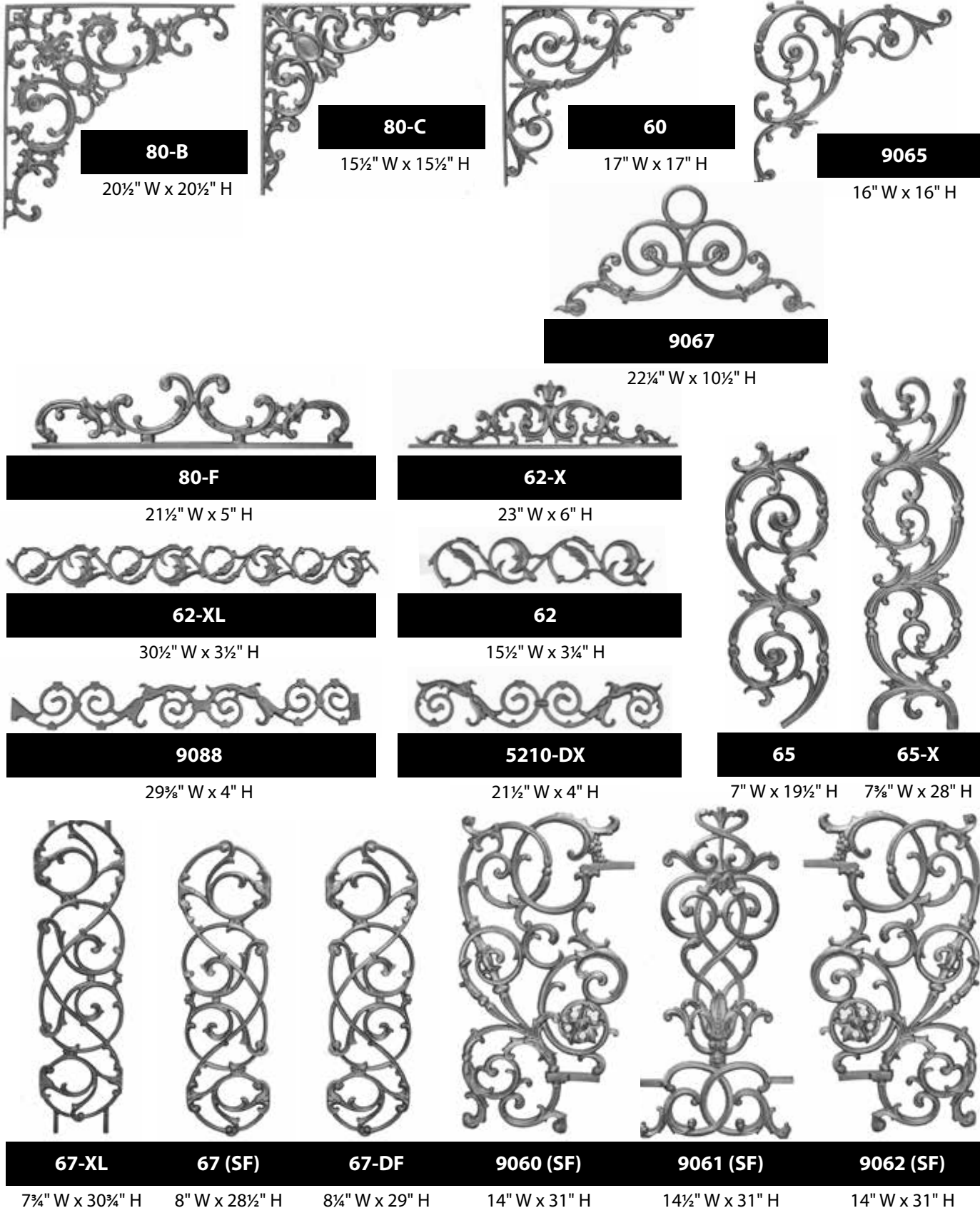
21 3/4" W x 30 3/8" H

ALL DIMENSIONS ARE APPROXIMATE.

ORNAMENTAL IRON CASTINGS

PONTALBA

(SBO)=Side backed out (concave on back) (SF)=Single faced (no design on back)
All castings double faced unless otherwise specified.



ALL DIMENSIONS ARE APPROXIMATE.

ORNAMENTAL IRON CASTINGS

IVY LEAF

(SBO)=Side backed out (concave on back) (SF)=Single faced (no design on back)
All castings double faced unless otherwise specified.



852

17 $\frac{3}{4}$ " W x 14 $\frac{1}{4}$ " H



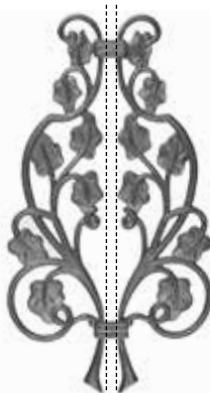
852-XS

12 $\frac{1}{2}$ " W x 7 $\frac{1}{4}$ " H



850

19" W x 4 $\frac{3}{4}$ " H



858

8 $\frac{1}{2}$ " W x 15 $\frac{3}{4}$ " H
Fits over 1/2" sq.



854

8" W x 19 $\frac{1}{4}$ " H



856

8" W x 31" H



8661

8 $\frac{3}{4}$ " W x 33 $\frac{1}{4}$ " H

MORNING GLORY



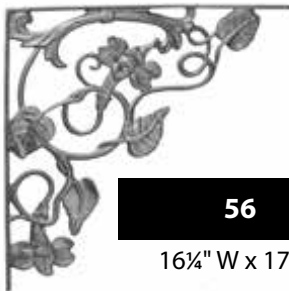
59

29" W x 10 $\frac{3}{4}$ " H



58

23" W x 20 $\frac{1}{4}$ " H



56

16 $\frac{1}{4}$ " W x 17" H



52

9 $\frac{1}{2}$ " Ø



54

9 $\frac{1}{2}$ " W x 28 $\frac{1}{2}$ " H



55

6 $\frac{1}{2}$ " W x 31 $\frac{1}{2}$ " H

ALL DIMENSIONS ARE APPROXIMATE.

ORNAMENTAL IRON CASTINGS

PASSION FLOWER

(SBO)=Side backed out (concave on back) (SF)=Single faced (no design on back)
All castings double faced unless otherwise specified.



96-B (SBO)

21¼" W x 21¼" H



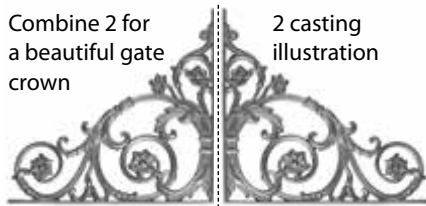
9092

30" W x 10¼" H



96-D (SBO)

19½" W x 4¾" H

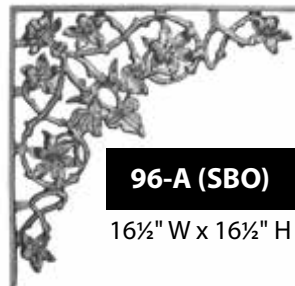


Combine 2 for
a beautiful gate
crown

2 casting
illustration

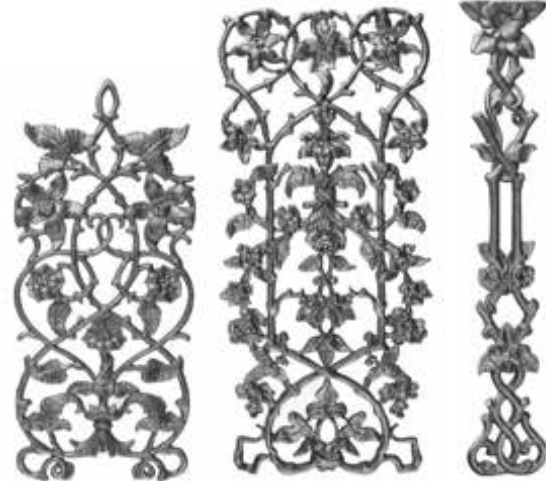
50

18" W x 17½" H



96-A (SBO)

16½" W x 16½" H



96 (SBO)

8½" W x 19¾" H

96-C (SBO)

12" W x 27¼" H

9091

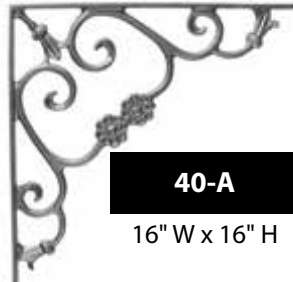
5" W x 28½" H

BELL FLOWER



40

17¼" W x 9½" H



40-A

16" W x 16" H



44

6¼" W x 31½" H



42

7" W x 16½" H



46

7¼" W x 6¼" H

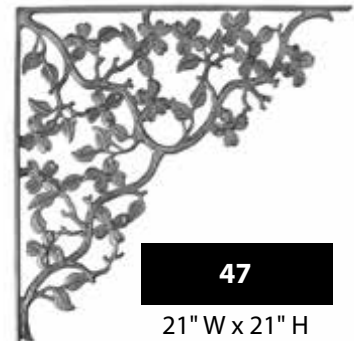
Corner
rosette

DOGWOOD



41

17½" W x 8" H



47

21" W x 21" H



45-A

7½" W x 26¼" H



45

8¼" W x 19" H



43

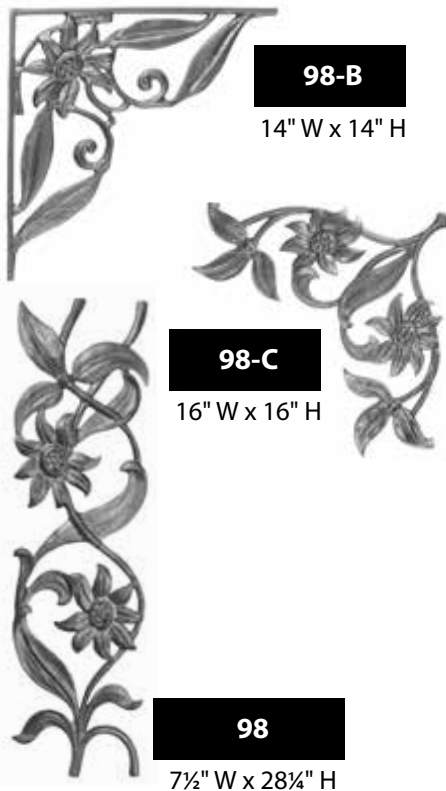
8" W x 18½" H

ALL DIMENSIONS ARE APPROXIMATE.

ORNAMENTAL IRON CASTINGS

(SBO)=Side backed out (concave on back) (SF)=Single faced (no design on back)
All castings double faced unless otherwise specified.

SUNFLOWER



BIRD & LEAF



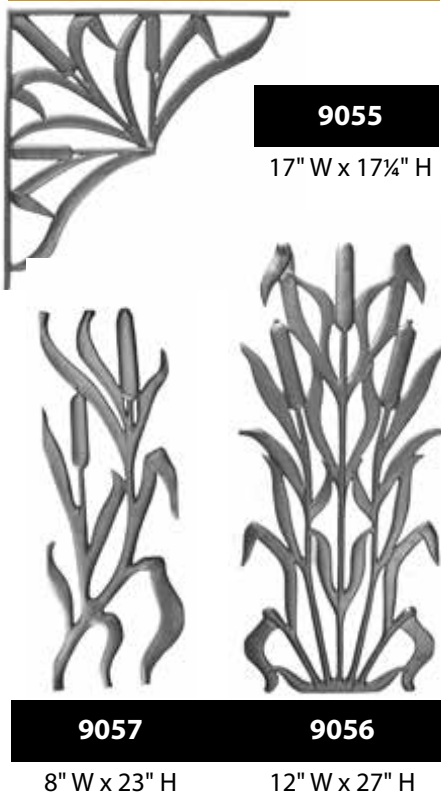
BANANA LEAF



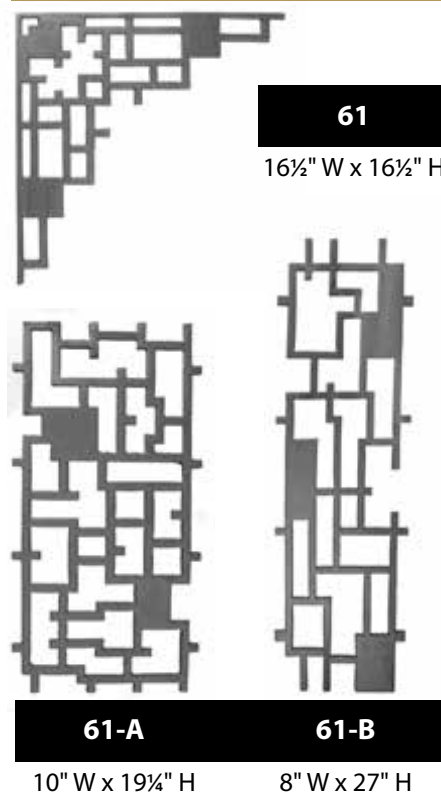
PINECONE



CATTAIL



CONTEMPORARY LATTICE



ALL DIMENSIONS ARE APPROXIMATE.

ORNAMENTAL METALS

All castings double faced unless otherwise specified.

TULIP



ORNAMENTAL IRON CROWNS AND TOP SCROLLS

(SBO)=Side backed out (concave on back) (SF)=Single faced (no design on back)
All castings double faced unless otherwise specified.

CAST IRON CROWNS



9027

28" W x 4½" H

9020

21" W x 5" H

9123 (SF)

10½" W x 6" H

9120 (SF)

12¾" W x 4¼" H



9988

33¾" W x 10¼" H

9084 (SF)

22¾" W x 7" H

680 (SF)

21¾" W x 10" H



9127 (SF)

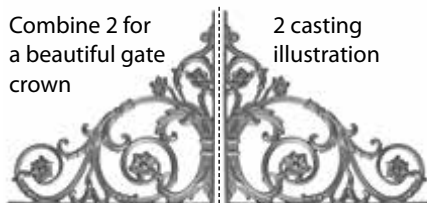
28¾" W x 4" H

7214

30¾" W x 11½" H

7217

32¾" W x 10¼" H



50

18" W x 17½" H



9018

27½" W x 6" H

FORGED STEEL TOP SCROLLS



116/D/1

50¹³/₃₂" W x 17²³/₃₂" H
matl. size ¾" x ¼"



1281/4

30" W x 10¼" H
matl. size ⅝" x ⅝"



116/E/3

31½" W x 11¹³/₁₆" H
matl. size 1³/₁₆" x 5⁵/₁₆"

GTP11

38¾" W x 11¹¹/₁₆" H
matl. size ½" x ¼"

GF1

35⁵/₁₆" W x 6¾" H
1" sq. solid hammered edge bar

ALL DIMENSIONS ARE APPROXIMATE.

TOP SCROLL PANELS



QC-904

29-1/2" W x 9" H, matl. size 3/4" x 1/4"



QC-903

31-1/2" W x 9" H, matl. size 3/4" x 1/4"



QC-905

43" W x 12" H, matl. size 3/4" x 1/4"



13-87

39-3/8" W x 12-19/32" H, matl. size 5/8" sq.



GTP17

34-1/16" W x 12-3/16" H, matl. size 1/2" x 1/4"



GD003

28-11/32" W x 23-3/64" H, matl. size 5/8" x 5/16"



696/1

36-1/4" W x 11-1/32" H, matl. size 5/8" x 5/16"

ALL DIMENSIONS ARE APPROXIMATE.

GATE FRAME ENDS AND SHAPED GATE FRAME TOPS

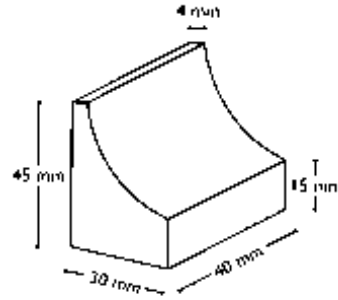


FRAME ENDS IN PLAIN FLAT BAR

Approx. 8" long available in the following sizes.

- 7/22** 1-1/4" x 3/8"
- 7/21** 1-1/2" x 3/8"
- 7/62** 2" x 3/8"

BLOCKS FOR CORNERS OF GATES



7/23A for 1-1/2" x 1-1/2" (40 x 40 mm) frames (illustrated)

7/23B for 1-1/4" x 1-1/4" (30 x 30 mm) frames

7/23C for 2" x 2" (50 x 50 mm) frames



7/21 forged scroll
1-1/2" x 3/8"

7/23A solid or box frame
1-1/2" x 1-1/2"
(40 x 40 mm)

LOCK PLATES



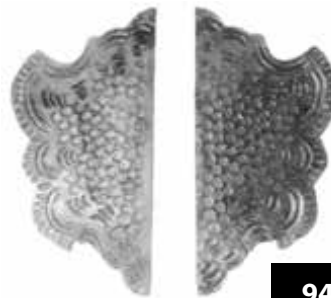
12-49/S

6-19/64" W x 10-5/8" H
3/16" thick



12-49/D

6-19/64" W x 10-5/8" H
3/16" thick



Reversible lock plate
5-15/16" W x 11-7/16" H
3/16" thick

Sold Individually

94/1

LONG SWEPT ARCH



8/11B

1-9/16" x 3/8", Plain Flat Bar
17-23/32 Rise
70-7/8" Long

SHORT SWEPT ARCH



8/13C

1-3/16" x 3/8", Plain Flat Bar
8-7/8" Rise
39-3/8" Long

SHADOW RAIL TOP ARCH

NOTE: Rolled on the edge. Use 2 arches, one in the front and one in back with uprights in between.



8/15C

1" x 3/8", Plain Flat Bar
17-23/32 Rise
70-7/8" Long

ALL DIMENSIONS ARE APPROXIMATE.

READYMADE GATES BY RIKFER



Korinna Estate Gate 18-2 (please specify width when ordering)

Width: 11'5" **Height:** 5'7" at side **Height:** 7'6" at center

Width: 13' **Height:** 5'7" at side **Height:** 7'6" at center

Korinna Pedestrian Gate 18-2-1

Width: 47" **Height:** 5'7" at side

Height: 6'8" at center



Verona Estate Gate 18-3 (please specify width when ordering)

Width: 11'5" **Height:** 5'4" at side **Height:** 6'4" at center

Width: 12'3" **Height:** 5'4" at side **Height:** 6'4" at center

Width: 13' **Height:** 5'4" at side **Height:** 6'4" at center

Verona Pedestrian Gate 18-3-1

Width: 44" **Height:** 5'4" at side

Height: 5'8" at center

ALL DIMENSIONS ARE APPROXIMATE.

READYMADE GATES BY RIKFER



Genoa Estate Gate 18-6 (please specify width when ordering)

Width: 11'5" **Height:** 5'7" at side **Height:** 8'4" at center
Width: 12'3" **Height:** 5'7" at side **Height:** 8'4" at center
Width: 13' **Height:** 5'7" at side **Height:** 8'4" at center

Genoa Pedestrian Gate 18-6-1

Width: 44" **Height:** 5'7" at side
Height: 6'5" at center



Trieste Estate Gate 18-15 (please specify width when ordering)

Width: 11'5" **Height:** 5'5" at side **Height:** 7' at center
Width: 12'3" **Height:** 5'5" at side **Height:** 7' at center
Width: 13' **Height:** 5'5" at side **Height:** 7' at center

Trieste Pedestrian Gate 18-15-1

Width: 44" **Height:** 5'5" at side
Height: 6' at center

ALL DIMENSIONS ARE APPROXIMATE.

READYMADE GATES BY RIKFER



Flora Estate Gate 18-16 (please specify width when ordering)

Width: 11'5" **Height:** 6'4" at side **Height:** 8' at center

Width: 12'3" **Height:** 6'4" at side **Height:** 8' at center

Flora Pedestrian Gate 18-16-1

Width: 44" **Height:** 6'4" at side

Height: 6'9" at center



Centaur Estate Gate 18-21 (please specify width when ordering)

Width: 11'5" **Height:** 5'5" at side **Height:** 7' at center

Width: 12'3" **Height:** 5'5" at side **Height:** 7' at center

Width: 13' **Height:** 5'5" at side **Height:** 7' at center

Centaur Pedestrian Gate 18-21-1

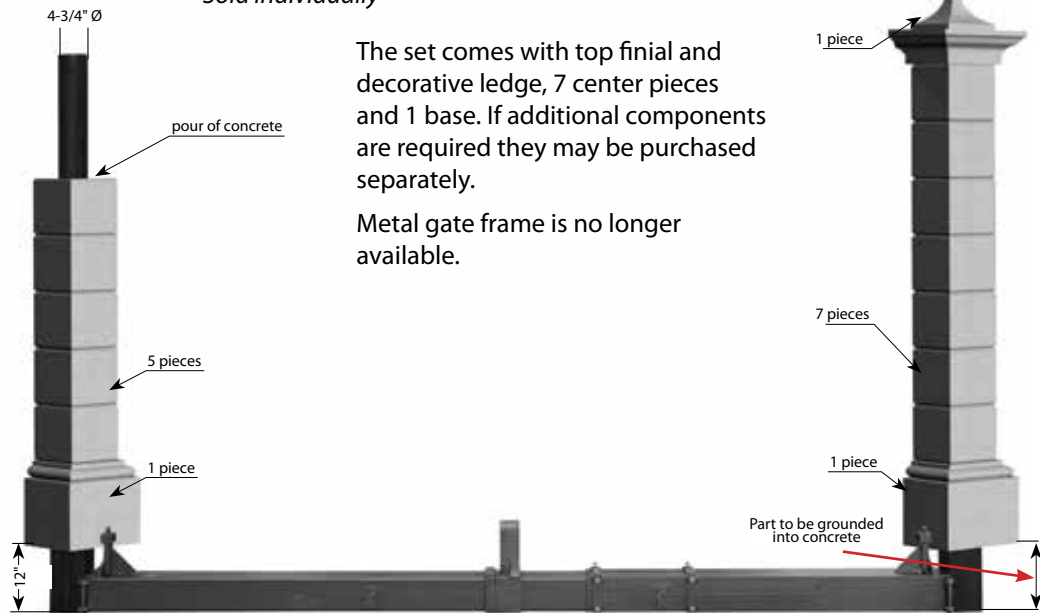
Width: 44" **Height:** 5'5"

ALL DIMENSIONS ARE APPROXIMATE.

READYMADE GATES BY RIKFER

Granite Columns– Item 16-24

Sold individually

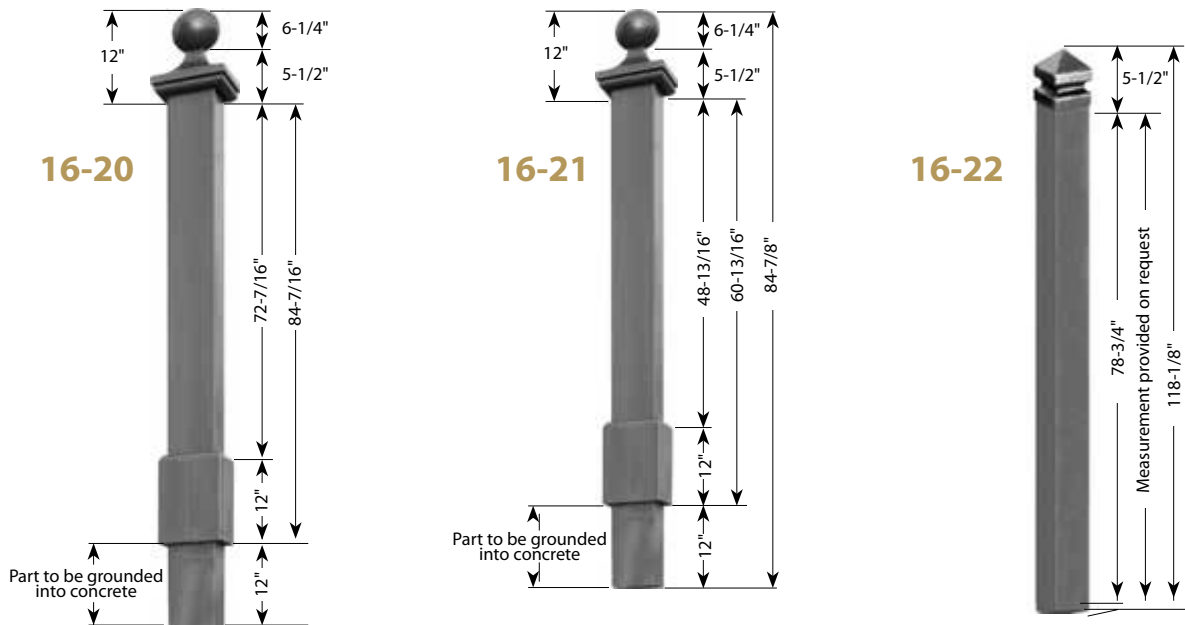


The set comes with top finial and decorative ledge, 7 center pieces and 1 base. If additional components are required they may be purchased separately.

Metal gate frame is no longer available.

Hot Dip Galvanized Steel Columns

Sold individually



Hinges are included with the gate.

This is the top clamp-hinge with greaser, plate and adjustable nut.



Pivot Hinge: This is the pivot with square base that is welded into the gate frame as shown in picture.



This is the bottom pivot hinge assembly.



ALL DIMENSIONS ARE APPROXIMATE.

FORGED PANELS FOR GATE DESIGN 18-2



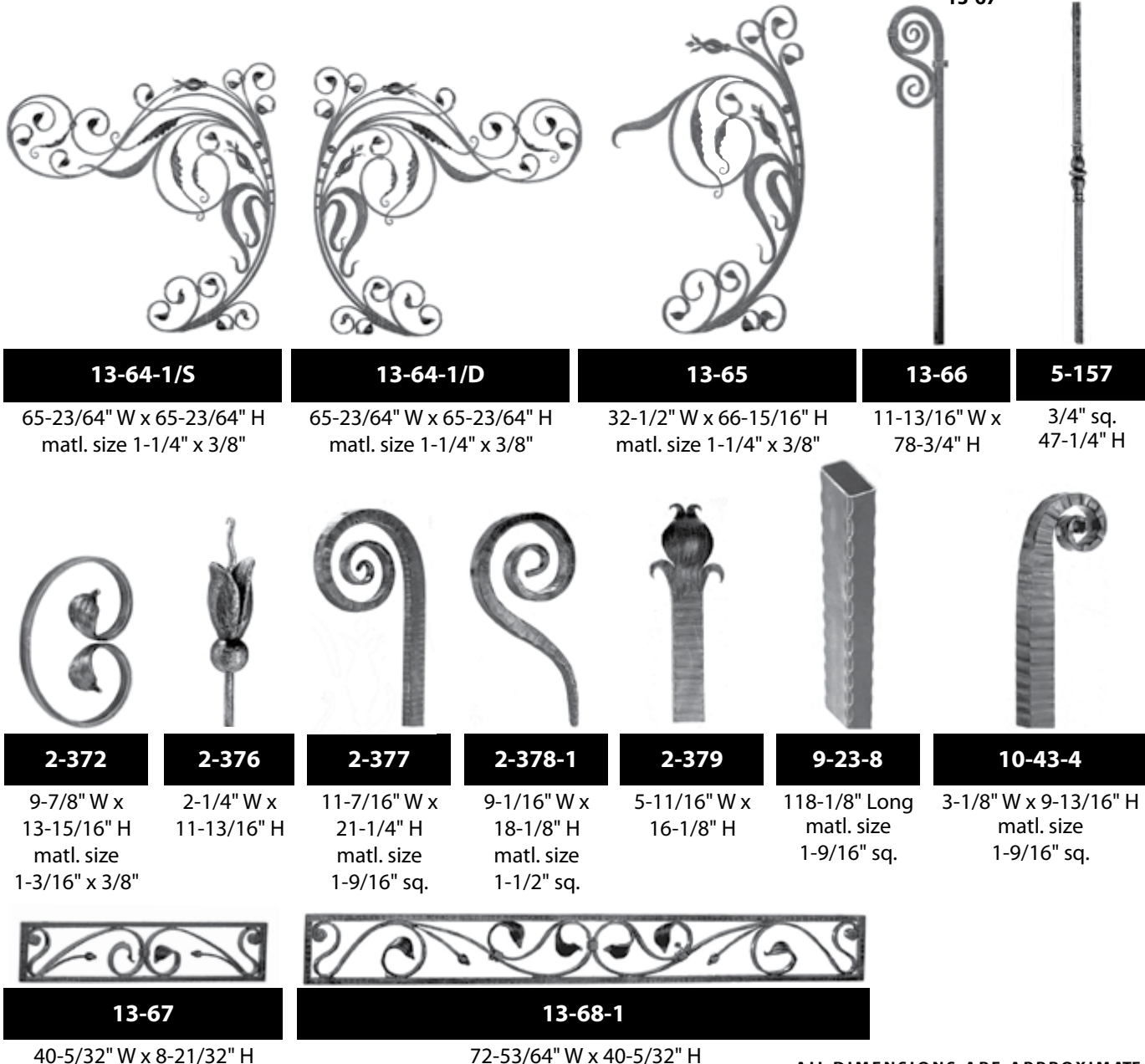
DESIGN: 18-2

COMPONENTS USED FOR DRIVEWAY GATE:

13-64-1/S
13-64-1/D
2-379
2-372
2-376
5-157
2-377
2-378-1
9-23-8
13-68-1

COMPONENTS USED FOR WALKWAY GATE:

13-65
9-23-8
10-43-4
2-377
2-378-1
13-67



ALL DIMENSIONS ARE APPROXIMATE.

FORGED PANELS FOR GATE DESIGN 18-6



DESIGN: 18-6	COMPONENTS USED FOR DRIVEWAY GATE:	COMPONENTS USED FOR WALKWAY GATE:
	13-57/S 13-57/D 6-227 2-263-1	13-62 6-228 2-263-1



13-57/S

78-3/4" W x 39-3/4" H
matl. sizes 5/8" sq., 5/8" x 3/8",
1-3/8" Ø

13-57/D

78-47/64" W x 39-49/64" H



13-62

47-1/4" W x 11-13/16" H



2-263-1

4-1/8" W x 9-41/64" H



6-227

12-19/32" W x 44-7/8" H
matl. size 5/8" x 3/8"



6-228

4-59/64" W x 44-7/8" H
matl. size 5/8" x 3/8"

ALL DIMENSIONS ARE APPROXIMATE.