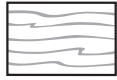


Wood Frame Requirements



4X6 WOOD
3-1/2" wide, 5-1/2" thick

Minimum sizes for all corner and end posts

All other posts should be sized as required for cap rail support strength or for code

The Basic Frame Design

Spacing From Walls:

Set end posts 3 to 4 inches away from the house/wall face to allow access for attaching cable end fittings.

End Posts:

Use minimum end post sizes noted above, and securely bolt or screw to joists or deck surface.

Cap Rail:

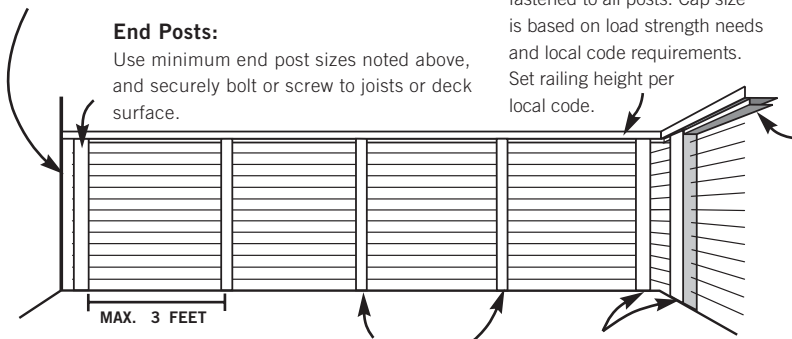
Always include a strong, rigid cap rail that is securely fastened to all posts. Cap size is based on load strength needs and local code requirements. Set railing height per local code.

Cable Spacing:

Maximum 3 inches apart.

Wood Blocking (WOOD FRAMES ONLY):

Underneath the cap rail attach minimum 1" x 4" wood blocking between posts to provide additional lateral reinforcement to the posts so that they won't pull out of plumb when the cables are tensioned.



Maximum Post Spacing:

Space all posts and vertical spacers (see below) a maximum of 3 feet apart to minimize any deflection that may occur if the cables are ever forced apart.

Intermediate Posts:

Size all intermediate posts as required for cap rail support strength or for code.

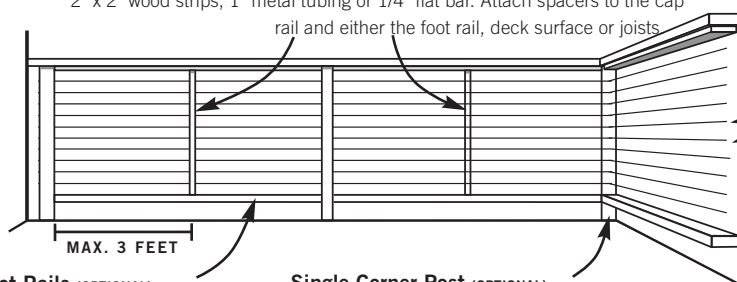
Double Corner Posts:

If possible use double corner posts to allow the cable to run continuously through the corners without terminating (see single corner post option below). Securely bolt or screw posts to joists or deck surface and use minimum corner post sizes noted above.

And Some Other Options

Vertical Spacers (OPTIONAL):

Slender spacers may be used instead of some of the larger intermediate posts to achieve a more open railing design. These are non-structural members and are only intended to maintain cable spacing and minimize deflection. Examples are 2" x 2" wood strips, 1" metal tubing or 1/4" flat bar. Attach spacers to the cap rail and either the foot rail, deck surface or joists.



Foot Rails (OPTIONAL):

Foot rails should be spaced no more than 4 inches above the deck surface, or as required by local code, and should be sized as needed for support strength and design appearance.

Single Corner Post (OPTIONAL):

When terminating on a single corner post, be sure to offset the drill holes at least 1/2" to allow internal clearance for the cable fittings. Use minimum end post sizes noted above and securely bolt or screw to joists or deck surface.

CONSTRUCTION CHECKLIST

Space cables no more than 3 inches apart

Space posts/verticals no more than 3 feet apart

Observe minimum end/corner post sizes shown above

Securely fasten all posts and cap rails

Carefully plan all termination and corner posts for proper clearance, positioning, and maximum cable run lengths

Straight runs of cable (no turns/dips) should not exceed 70 feet; runs with corner bends (2 bends at most) should not exceed 40 feet

IMPORTANT NOTE

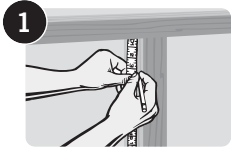
For railings we recommend spacing the cables no more than 3 inches apart and placing posts or vertical members no more than 3 feet apart.

Please note that since building codes vary by state, county and city, our recommendations may not comply with code requirements in all areas.

Always consult with your local building department before starting your project.

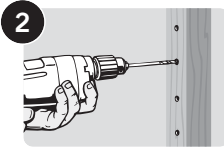
Step-by-Step Installation for Wood Frames

Installing the Standard 1/8" Cable System is easy. Just follow these simple steps:



Mark drill hole locations on posts.

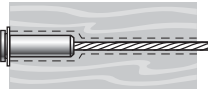
To minimize cable deflection, space cables no more than 3 inches apart and have a post or vertical spacer at least every 3 feet. Also, straight runs of cable (no turns/dips) should not exceed 70 feet. Runs with corners (2 bends at most) should not exceed 40 feet. (See Frame Requirements on previous page.)



Drill holes in posts. Hole diameter depends on cable size and type of fitting. See chart below.

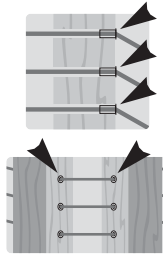
Cable Size	Threaded Term. Post	Intermediate Posts	Quick-Connect Post
1/8"	5/16"	1/4"	3/8"
3/16"	3/8"	1/4"	9/16"

If desired, Quick-Connect®SS posts may be through drilled at 1/4" and then countersunk with the recommended Quick-Connect®SS drill to countersink the fitting.

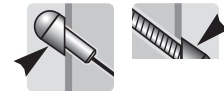


Insert Protector Sleeves at necessary locations. Tap in until flush.

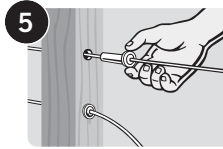
Protector Sleeves prevent abrasion at angled transitions on wood posts (e.g. stair transition posts or outside faces of double corner posts.)



Insert the Threaded Terminal through the Terminal end post and attach a flat washer and Snug-Grip® Washer-Nut. Spin the nut 2 full turns. Strong resistance will be felt as the Snug-Grip® threads engage; so hold the Terminal shaft with pliers.



Use Beveled Washers for stair termination posts with angled holes. Available for Threaded Terminal and Quick-Connect®SS fittings. Always install the Quick-Connect®SS fittings in the top stair post to prevent rain water from running down the cable into the fittings.

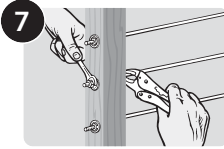


Lace the free end of the cable through the intermediate posts and Quick-Connect®SS end post. Slide-on a flat washer and Quick-Connect®SS fitting until they rest against the face of the post.

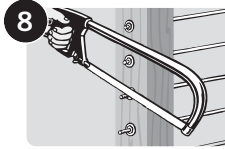
Use a Lacing Needle if snagging becomes a problem.



Hold the Quick-Connect®SS fitting with one hand and pull the cable tight with the other. The fitting automatically locks when you release the cable.



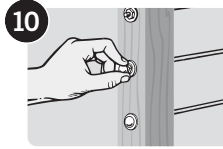
Tension the cables by holding the Threaded Terminal shaft with Vise-Grip pliers and spinning the Snug-Grip® Washer-Nuts with a wrench. A Feeney Tension Gauge may be used to check uniform tension.



Use hacksaw, reciprocating saw, or electric grinder with cut-off disk to saw off the excess threads as close to the Snug-Grip® Washer-Nut as possible. Touch-up with electric grinder. The special Snug-Grip® threads prevent the nut from loosening.



Use cable cutters or electric grinder with cut-off disk to trim the excess cable. Grind flush the exposed cable ends with an electric grinder.



Snap on end caps over the exposed Quick-Connect®SS fittings and the Snug-Grip® Washer-Nuts. You're done.

SteelRenewal™ & SteelProtect™ can be used to clean and provide lasting protection of stainless steel cable and parts.

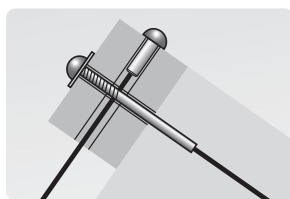
Recommended cable tensioning sequence

Important Note: If using electric or pneumatic tools to tighten the Washer Nuts, spin the nuts very slowly otherwise they will heat-up causing the threads to seize.

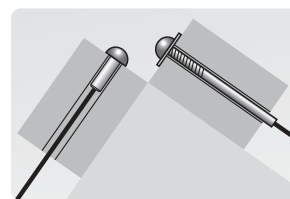


Cables can terminate or run through corner posts

Terminating

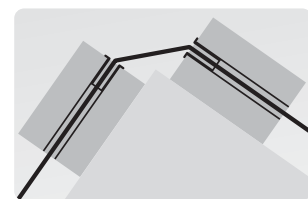


SINGLE WOOD POST
Offset drill holes at least 1/2"



DOUBLE WOOD POSTS

Continuous



DOUBLE WOOD POSTS