

FOIA MARKER

This is not a textual record. This is used as an administrative marker by the William J. Clinton Presidential Library Staff.

Collection/Record Group: Clinton Presidential Records

Subgroup/Office of Origin: National Service

Series/Staff Member: Shirley Sagawa

Subseries:

OA/ID Number: 24268

FolderID:

Folder Title:
BIO - S. Sagawa

Stack:

S

Row:

66

Section:

1

Shelf:

9

Position:

2

SHIRLEY S. SAGAWA

Shirley Sagawa is the managing director for strategic planning and the former executive director of the Corporation for National Service. The Corporation, whose mission is to engage Americans of all ages and backgrounds in service to their communities, implements the AmeriCorps, Learn and Service America, and the National Senior Service Corps programs.

Sagawa, one of the youngest women appointed by President Clinton to a senior-level Senate-confirmed position, is well known in the service community for playing leading roles in drafting national service legislation. As chief counsel for youth policy on the Senate Labor and Human Resources Committee, she co-authored the National and Community Service Act of 1990 (which created the Commission on National and Community Service), and served as lead committee staff person on child care and Head Start legislation.

Sagawa came to the Corporation from the White House where she was special assistant to the President for domestic policy and policy advisor to the First Lady. There she helped guide into law the National and Community Service Trust Act, which authorized a large-scale national service program, AmeriCorps, which provides education assistance to those who make a substantial commitment to service.

While employed as senior counsel to the National Women's Law Center, Sagawa was appointed by President Bush to the Board of Directors of the Commission on National and Community Service, where she was elected vice chair.

Sagawa is a graduate of Harvard Law School, where she was an editor of the Harvard Law Review and co-president of the Women's Law Association. She has a master's degree from the London School of Economics and a bachelor's degree from Smith College.

SHIRLEY S. SAGAWA

Shirley Sagawa is the managing director for strategic planning and the former executive director of the Corporation for National Service. The Corporation, whose mission is to engage Americans of all ages and backgrounds in service to their communities, implements the AmeriCorps, Learn and Service America, and the National Senior Service Corps programs.

Sagawa, one of the youngest women appointed by President Clinton to a senior-level Senate-confirmed position, is well known in the service community for playing leading roles in drafting national service legislation. As chief counsel for youth policy on the Senate Labor and Human Resources Committee, she co-authored the National and Community Service Act of 1990 (which created the Commission on National and Community Service), and served as lead committee staff person on child care and Head Start legislation.

Sagawa came to the Corporation from the White House where she was special assistant to the President for domestic policy and policy advisor to the First Lady. There she helped guide into law the National and Community Service Trust Act, which authorized a large-scale national service program, AmeriCorps, which provides education assistance to those who make a substantial commitment to service.

While employed as senior counsel to the National Women's Law Center, Sagawa was appointed by President Bush to the Board of Directors of the Commission on National and Community Service, where she was elected vice chair.

Sagawa is a graduate of Harvard Law School, where she was an editor of the Harvard Law Review and co-president of the Women's Law Association. She has a master's degree from the London School of Economics and a bachelor's degree from Smith College.

SHIRLEY S. SAGAWA

Shirley Sagawa is the managing director for strategic planning and the former executive director of the Corporation for National Service. The Corporation, whose mission is to engage Americans of all ages and backgrounds in service to their communities, implements the AmeriCorps, Learn and Service America, and the National Senior Service Corps programs.

Sagawa, one of the youngest women appointed by President Clinton to a senior-level Senate-confirmed position, is well known in the service community for playing leading roles in drafting national service legislation. As chief counsel for youth policy on the Senate Labor and Human Resources Committee, she co-authored the National and Community Service Act of 1990 (which created the Commission on National and Community Service), and served as lead committee staff person on child care and Head Start legislation.

Sagawa came to the Corporation from the White House where she was special assistant to the President for domestic policy and policy advisor to the First Lady. There she helped guide into law the National and Community Service Trust Act, which authorized a large-scale national service program, AmeriCorps, which provides education assistance to those who make a substantial commitment to service.

While employed as senior counsel to the National Women's Law Center, Sagawa was appointed by President Bush to the Board of Directors of the Commission on National and Community Service, where she was elected vice chair.

Sagawa is a graduate of Harvard Law School, where she was an editor of the Harvard Law Review and co-president of the Women's Law Association. She has a master's degree from the London School of Economics and a bachelor's degree from Smith College.

SHIRLEY S. SAGAWA

Shirley Sagawa is the managing director for strategic planning and the former executive director of the Corporation for National Service. The Corporation, whose mission is to engage Americans of all ages and backgrounds in service to their communities, implements the AmeriCorps, Learn and Service America, and the National Senior Service Corps programs.

Sagawa, one of the youngest women appointed by President Clinton to a senior-level Senate-confirmed position, is well known in the service community for playing leading roles in drafting national service legislation. As chief counsel for youth policy on the Senate Labor and Human Resources Committee, she co-authored the National and Community Service Act of 1990 (which created the Commission on National and Community Service), and served as lead committee staff person on child care and Head Start legislation.

Sagawa came to the Corporation from the White House where she was special assistant to the President for domestic policy and policy advisor to the First Lady. There she helped guide into law the National and Community Service Trust Act, which authorized a large-scale national service program, AmeriCorps, which provides education assistance to those who make a substantial commitment to service.

While employed as senior counsel to the National Women's Law Center, Sagawa was appointed by President Bush to the Board of Directors of the Commission on National and Community Service, where she was elected vice chair.

Sagawa is a graduate of Harvard Law School, where she was an editor of the Harvard Law Review and co-president of the Women's Law Association. She has a master's degree from the London School of Economics and a bachelor's degree from Smith College.

SHIRLEY S. SAGAWA

Shirley Sagawa is the managing director for strategic planning and the former executive director of the Corporation for National Service. The Corporation, whose mission is to engage Americans of all ages and backgrounds in service to their communities, implements the AmeriCorps, Learn and Service America, and the National Senior Service Corps programs.

Sagawa, one of the youngest women appointed by President Clinton to a senior-level Senate-confirmed position, is well known in the service community for playing leading roles in drafting national service legislation. As chief counsel for youth policy on the Senate Labor and Human Resources Committee, she co-authored the National and Community Service Act of 1990 (which created the Commission on National and Community Service), and served as lead committee staff person on child care and Head Start legislation.

Sagawa came to the Corporation from the White House where she was special assistant to the President for domestic policy and policy advisor to the First Lady. There she helped guide into law the National and Community Service Trust Act, which authorized a large-scale national service program, AmeriCorps, which provides education assistance to those who make a substantial commitment to service.

While employed as senior counsel to the National Women's Law Center, Sagawa was appointed by President Bush to the Board of Directors of the Commission on National and Community Service, where she was elected vice chair.

Sagawa is a graduate of Harvard Law School, where she was an editor of the Harvard Law Review and co-president of the Women's Law Association. She has a master's degree from the London School of Economics and a bachelor's degree from Smith College.

SHIRLEY S. SAGAWA

Shirley Sagawa is the managing director for strategic planning and the former executive director of the Corporation for National Service. The Corporation, whose mission is to engage Americans of all ages and backgrounds in service to their communities, implements the AmeriCorps, Learn and Service America, and the National Senior Service Corps programs.

Sagawa, one of the youngest women appointed by President Clinton to a senior-level Senate-confirmed position, is well known in the service community for playing leading roles in drafting national service legislation. As chief counsel for youth policy on the Senate Labor and Human Resources Committee, she co-authored the National and Community Service Act of 1990 (which created the Commission on National and Community Service), and served as lead committee staff person on child care and Head Start legislation.

Sagawa came to the Corporation from the White House where she was special assistant to the President for domestic policy and policy advisor to the First Lady. There she helped guide into law the National and Community Service Trust Act, which authorized a large-scale national service program, AmeriCorps, which provides education assistance to those who make a substantial commitment to service.

While employed as senior counsel to the National Women's Law Center, Sagawa was appointed by President Bush to the Board of Directors of the Commission on National and Community Service, where she was elected vice chair.

Sagawa is a graduate of Harvard Law School, where she was an editor of the Harvard Law Review and co-president of the Women's Law Association. She has a master's degree from the London School of Economics and a bachelor's degree from Smith College.

SHIRLEY S. SAGAWA

Shirley Sagawa is the managing director for strategic planning and the former executive director of the Corporation for National Service. The Corporation, whose mission is to engage Americans of all ages and backgrounds in service to their communities, implements the AmeriCorps, Learn and Service America, and the National Senior Service Corps programs.

Sagawa, one of the youngest women appointed by President Clinton to a senior-level Senate-confirmed position, is well known in the service community for playing leading roles in drafting national service legislation. As chief counsel for youth policy on the Senate Labor and Human Resources Committee, she co-authored the National and Community Service Act of 1990 (which created the Commission on National and Community Service), and served as lead committee staff person on child care and Head Start legislation.

Sagawa came to the Corporation from the White House where she was special assistant to the President for domestic policy and policy advisor to the First Lady. There she helped guide into law the National and Community Service Trust Act, which authorized a large-scale national service program, AmeriCorps, which provides education assistance to those who make a substantial commitment to service.

While employed as senior counsel to the National Women's Law Center, Sagawa was appointed by President Bush to the Board of Directors of the Commission on National and Community Service, where she was elected vice chair.

Sagawa is a graduate of Harvard Law School, where she was an editor of the Harvard Law Review and co-president of the Women's Law Association. She has a master's degree from the London School of Economics and a bachelor's degree from Smith College.

SHIRLEY S. SAGAWA

Shirley Sagawa is the managing director for strategic planning and the former executive director of the Corporation for National Service. The Corporation, whose mission is to engage Americans of all ages and backgrounds in service to their communities, implements the AmeriCorps, Learn and Service America, and the National Senior Service Corps programs.

Sagawa, one of the youngest women appointed by President Clinton to a senior-level Senate-confirmed position, is well known in the service community for playing leading roles in drafting national service legislation. As chief counsel for youth policy on the Senate Labor and Human Resources Committee, she co-authored the National and Community Service Act of 1990 (which created the Commission on National and Community Service), and served as lead committee staff person on child care and Head Start legislation.

Sagawa came to the Corporation from the White House where she was special assistant to the President for domestic policy and policy advisor to the First Lady. There she helped guide into law the National and Community Service Trust Act, which authorized a large-scale national service program, AmeriCorps, which provides education assistance to those who make a substantial commitment to service.

While employed as senior counsel to the National Women's Law Center, Sagawa was appointed by President Bush to the Board of Directors of the Commission on National and Community Service, where she was elected vice chair.

Sagawa is a graduate of Harvard Law School, where she was an editor of the Harvard Law Review and co-president of the Women's Law Association. She has a master's degree from the London School of Economics and a bachelor's degree from Smith College.

HARRIS WOFFORD

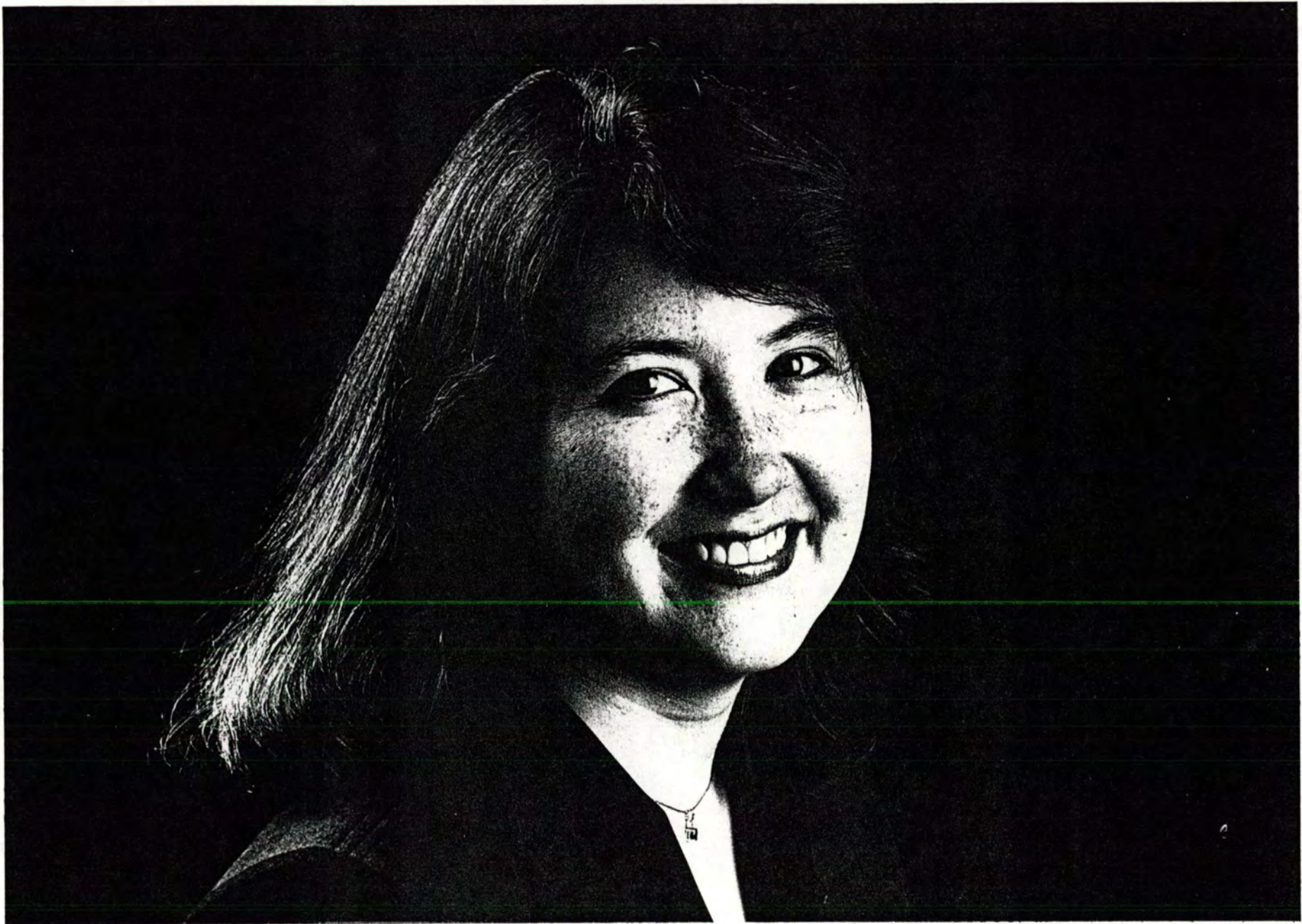
Harris Wofford brings to the post of Chief Executive Officer of the Corporation for National Service long dedication to the goal of making citizen service the common expectation and common experience of all Americans. As a United States Senator from Pennsylvania (1991 to 1994), he played a key part in crafting the landmark legislation that created the Corporation, and winning the necessary bi-partisan support to secure its passage.

Since helping to launch the Peace Corps in 1961, he has been in the forefront of the effort to bring that idea home to America. In the 1970s, he formed and chaired the Committee to Study the Idea of National Service, which in 1979 produced the landmark report *Youth and the Needs of the Nation*. In 1987, as Pennsylvania Secretary of Labor and Industry, he established and led Governor Robert Casey's Office of Citizen Service, known as PennServe, which promoted school-based service and learning throughout the Commonwealth, managed the Pennsylvania Conservation Corps, and encouraged the formation of a number of summer and year-round youth service corps.

While in Governor Casey's cabinet, Mr. Wofford worked with Governor Clinton of Arkansas on a National Governors Association Task Force on National Youth Service, and came to Washington to assist the bi-partisan group of Senators who drafted the National and Community Service Act of 1990, signed into law by President Bush. In 1991, as a newly-elected Senator, Mr. Wofford joined Senator David Boren of Oklahoma in initiating and, with the help of Senator Dole, securing bi-partisan support for a National Civilian Community Corps, signed into law by President Bush in 1992. In 1993, Senator Wofford worked with President Clinton's task force headed by Eli Segal in drafting the National and Community Service Trust Act, and co-managed the bill during the floor debate.

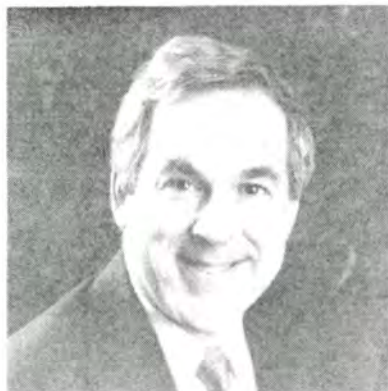
Previously, Mr. Wofford served in three national administrations. From 1958 to 1959, during the Eisenhower Administration, he was counsel to the Rev. Theodore Hesburgh of Notre Dame on the first U.S. Commission on Civil Rights. From 1961 to 1962, he was Special Assistant to President Kennedy and chaired the subcabinet group on civil rights. While on the White House staff, he helped Sargent Shriver plan and organize the Peace Corps, and in 1962 became the Peace Corps' Special Representative to Africa and director of its large Ethiopia program. In 1964, during the Johnson Administration, he became the Peace Corps' Associate Director.

In academia, Mr. Wofford was an Associate Professor of Law at Notre Dame Law School from 1959 to 1960, President of the new College at Old Westbury of the State University of New York, 1966 to 1970, and from 1970 to 1978 President of Bryn Mawr College. During World War II, Mr. Wofford served in the Army Air Force. In 1948 he earned a B.A. from the University of Chicago, and in 1954 J.D.s from both Howard University and Yale Law Schools. From 1954 to 1958 he was an associate at Covington and Burling law firm in Washington, DC, and from 1979 to 1986 he was counsel to Schnader, Harrison, Segal and Lewis in Philadelphia. He and his late wife Clare are co-authors of India Afire (1951). He is the author of Of Kennedys & Kings: Making Sense of the Sixties (1980). They have three children and four grandchildren.



The Corporation for National and Community Service

Management Team



Eli Segal
President and
Chief Executive Officer

•••



James Joseph
Chair
Board of Directors

(nominated)
•••



Shirley Sagawa
Executive Vice President and
Managing Director

(nominated)
•••

"The President believes strongly that national service will play a key role in rebuilding our communities," says Eli Segal, chief executive officer of the Corporation. "National service is a movement committed to the principle of getting things done."

As head of the Corporation, which was formed by merging the federal agencies ACTION and the Commission on National and Community Service and incorporating the new Civilian Community Corps, Segal's job is to help President Clinton revive the spirit of community throughout America.

Before accepting the President's nomination to direct the Corporation, Segal served as chief of staff of the Clinton-Gore campaign, chief financial officer of the transition, director of the White House Office of National Service, and assistant to the President (a position he continues to hold).

Prior to coming to Washington, Segal was best noted for his entrepreneurial flair as a businessman. Most recently, he was founder and president of a Boston-based direct marketing company and the publisher of *Games* magazine.

Segal served as the national finance chair of the Hart for President Campaign in 1987, and as assistant campaign manager for the McGovern campaign in 1972, where he first met and worked with Bill Clinton.

Segal has served on the board of directors of the International Human Rights Law Group, and as a trustee of Lesley College and the Petra Foundation.

A native of Brooklyn, New York, he received his bachelor's degree from Brandeis University and his law degree from the University of Michigan.

James Joseph believes that the desire to serve is universal. People only need more opportunities to put that desire into action. The Corporation, he says, is the perfect vehicle to provide these opportunities for Americans of all ages and backgrounds.

As head of the Council on Foundations, a Washington-based center for more than 1,300 grant-making organizations, Joseph has extensive experience and special expertise in philanthropic and private sector partnerships.

Prior to becoming president and chief executive officer of the Council on Foundations, Joseph served as under secretary of the Interior in the Carter administration. He also worked as vice president of Cummins Engine Company and president of the Cummins Engine Foundation.

Joseph has taught at Yale University, the Claremont Colleges in California, and Stillman College in Tuscaloosa, Alabama, where he was a leader in the local civil rights movement. He is a member of the Presidential Commission on Historically Black Colleges and Universities.

Joseph also is a member of the Council on Foreign Relations and the Overseas Development Council. In addition, he serves on the Board of Directors of the Brookings Institute, the Children's Defense Fund, the Colonial Williamsburg Foundation, Africare, the National Endowment for Democracy, and the Points of Light Foundation.

Author of many books and articles, he is best known for *The Charitable Impulse*, a study of wealth and social conscience in communities and cultures outside the United States. Joseph holds degrees from Yale Divinity School and Southern University.

Shirley Sagawa believes that national service "not only taps the powerful energy of our nation's young people to solve the pressing problems of our communities -- it also teaches them the rights and responsibilities of citizenship."

Sagawa is well known in the service community for playing key roles in drafting national service legislation. She was a leading advocate for national service in the 1980's, when the concept of a new national program of community service was just beginning to emerge. As chief counsel for youth policy on the Senate Labor and Human Resources Committee, she co-authored the National and Community Service Act of 1990, which created the Commission on National and Community Service, for which she served a two-year appointment (by President Bush) as the board's vice chair. Most recently, as special assistant to President Clinton for domestic policy and policy assistant to the First Lady, she helped guide into law the National and Community Service Trust Act of 1993, which created the Corporation.

Before moving to the White House, Sagawa served as senior counsel and director of youth policy at the National Women's Law Center. Previously, she served on the executive committee of the Organization of Pan Asian American Women.

Sagawa is a graduate of Harvard Law School, where she was an editor of the Harvard Law Review and co-president of the Women's Law Association. Sagawa has a master's degree from the London School of Economics and a bachelor's from Smith College.



Eli Segal
President and
Chief Executive Officer
...

"The President believes strongly that national service will play a key role in rebuilding our communities," says Eli Segal, chief executive officer of the Corporation. "National service is a movement committed to the principle of getting things done."

As head of the Corporation, which was formed by merging the former federal agencies ACTION and the Commission on National and Community Service and incorporating the new National Civilian Community Corps, Segal's job is to help President Clinton revive the spirit of community throughout America.

Before accepting the President's nomination to direct the Corporation, Segal served as chief of staff of the Clinton-Gore campaign, chief financial officer of the transition, director of the White House Office of National Service, and assistant to the President (a position he continues to hold).

Prior to coming to Washington, Segal was best noted for his entrepreneurial flair as a businessman. Most recently, he was founder and president of a Boston-based direct marketing company and the publisher of *Games* magazine.

Segal served as the national finance chair of the Hart for President Campaign in 1987, and as assistant campaign manager for the McGovern campaign in 1972, where he first met and worked with Bill Clinton.

Segal has served on the board of directors of the International Human Rights Law Group, and as a trustee of Lesley College and the Petra Foundation.

A native of Brooklyn, New York, he received his bachelor's degree from Brandeis University and his law degree from the University of Michigan.



James Joseph
Chair
Board of Directors
...

James Joseph believes that the desire to serve is universal and that people only need more opportunities to put that desire into action. The Corporation, he says, can provide these opportunities for Americans of all ages and backgrounds.

As head of the Council on Foundations, a Washington-based center for more than 1,300 grant-making organizations, Joseph has extensive experience and special expertise in philanthropic and private sector partnerships.

Prior to becoming president and chief executive officer of the Council on Foundations, Joseph served as under secretary of the Interior in the Carter administration. He also worked as vice president of Cummins Engine Company and president of the Cummins Engine Foundation.

Joseph has taught at Yale University, the Claremont Colleges in California, and Stillman College in Tuscaloosa, Alabama, where he was a leader in the local civil rights movement. He is a member of the Presidential Commission on Historically Black Colleges and Universities.

Joseph also is a member of the Council on Foreign Relations and the Overseas Development Council. In addition, he serves on the Board of Directors of the Brookings Institute, the Children's Defense Fund, the Colonial Williamsburg Foundation, Africare, the National Endowment for Democracy, and the Points of Light Foundation.

Author of many books and articles, he is best known for *The Charitable Impulse*, a study of wealth and social conscience in communities outside the United States. Joseph holds degrees from Yale Divinity School and Southern University.



Shirley Sagawa
Executive Vice President and
Managing Director
...

"National Service," says Shirley Sagawa, "not only taps the powerful energy of our nation's young people to solve the pressing problems of our communities -- it also teaches them the rights and responsibilities of citizenship."

Sagawa is well known in the service community for playing key roles in drafting national service legislation. She was a leading advocate for national service in the 1980's, when the concept of a new national program of community service was just beginning to emerge. As chief counsel for youth policy on the Senate Labor and Human Resources Committee, she co-authored the National and Community Service Act of 1990, which created the Commission on National and Community Service, for which she served a two-year appointment (by President Bush) as the board's vice chair. Most recently, as special assistant to President Clinton for domestic policy and policy assistant to the First Lady, she helped guide into law the National and Community Service Trust Act of 1993, which created the Corporation.

Before moving to the White House, Sagawa served as senior counsel and director of youth policy at the National Women's Law Center. Previously, she served on the executive committee of the Organization of Pan Asian American Women.

Sagawa is a graduate of Harvard Law School, where she was an editor of the Harvard Law Review and co-president of the Women's Law Association. Sagawa has a master's degree from the London School of Economics and a bachelor's from Smith College.



Donald Scott
Vice President and Director of the
National Civilian Community Corps

•••

"Of all the things I could have hoped to do, this is the most important. It answers my desire to contribute to society in the highest form," says General Donald Scott, who heads the new National Civilian Community Corps.

The NCCC will involve more than 1,000 American men and women ages 16 through 24 in residential year-long community service programs. The programs will employ former military personnel and make use of military compounds, aiming to ease the hardships military-centered communities face as a result of defense downsizing. The NCCC also will demonstrate community service as an alternative to military service.

With over 30 years of Army experience, Scott has long envisioned a civilian program based on the best elements of military service. He plans a program that will develop leadership in young Americans by giving them the opportunity to pass from youth to adulthood with skills and a commitment to community.

A self-described product of national service, Scott says the biggest impact the Army had on his life was in the skills, discipline and way of living it taught him. He says his deepest desire is to help America's young people acquire those same gifts.

Prior to joining the Corporation, Scott served as Atlanta Mayor Maynard Jackson's chief of staff and chief operating officer. Scott's Army career included serving in command positions at each level from second lieutenant to brigadier general. He also has been a professor of Military Science at Tuskegee University. Scott received a master's degree in counseling and human development from Troy State University.



Catherine Milton
Vice President and Director of
National Service Programs

•••

When Catherine Milton came to Washington in 1991 to direct the former Commission on National and Community Service, she envisioned a national service program that would "enable all Americans to know the power of making a difference."

Now, as the Corporation's director of National Service Programs, Milton is responsible for helping communities build high quality service initiatives -- running the gamut from Learn and Serve America programs (which involve kindergarten through high school students in service) to programs funded through the President's initiative (for which participants will receive education awards in exchange for service).

Milton's own community service began with addressing needs in public safety. During the Carter Administration, Milton spent four years working on gun control and regulatory issues with the Treasury Department. She has served as the assistant director of the Police Foundation, on the Senate Special Committee on Aging (where she wrote and guided into law legislation to assist victims of crime), and on the U.S. Attorney's Task Force on Family Violence. She also is the author of several books, including *Women in Policing*.

In 1984 Milton founded the Haas Center for Public Service at Stanford University—a program that now involves over 80 percent of the campus' students in community service. She also helped organize Campus Compact, an alliance of college and university presidents in support of service.

Milton has received many awards from organizations, ranging from the American Society of Public Administration to her alma mater, Mount Holyoke College, which recently gave her an honorary doctorate degree.



Jim Scheibel
Vice President and Director of
Domestic Volunteer Programs

•••

What impresses Jim Scheibel most about service is its ability to empower citizens. "National service programs not only enable people to tend to their communities' well-being, they also help them take charge of their future."

Scheibel will head the Corporation's Domestic Volunteer Programs, including VISTA (Volunteers in Service to America), Foster Grandparents, Senior Companions, and Retired Senior Volunteer programs.

Scheibel is a long-time believer in the power of citizens of all ages to make substantial contributions to their communities. Serving on Saint Paul's city council throughout the 1980s, and for the last four years as Mayor, Scheibel has long promoted youth corps programs. And as a member of the national VISTA staff in the late 1970s, he supported programs that involve people of all ages in service to their communities. He also helped establish *Friends of VISTA*, a network which links more than 100,000 former VISTA volunteers.

As Mayor, Scheibel has established youth programs including the Saint Paul Youth Corps, the Youth Council, and the Capitol City Youth Corps, a job corps program which last year provided over 800 young people with employment, wages and skills. Scheibel also started the nation's first housing fund for middle-income families, Saint Paul's first practical skills program for new Americans, and several neighborhood-based health and environmental services throughout the city.

Scheibel has served as chair of the U.S. Conference of Mayors task force on hunger and homelessness. He holds a degree from St. John's University in Minnesota.

Thompson, Avelina

To: Bongiovanni, Joseph
Subject: FW: Message from Harris
Importance: High

Joe, here it is.

From: Bongiovanni, Joseph
Sent: Wednesday, May 22, 1996 5:41 PM
To: CNSALLEMPHQPO1
Cc: Jospin, Debbie@CNCS MS Mail Se
Subject: FW: Message from Harris
Importance: High

From: Jospin, Debbie on Wed, May 22, 1996 5:10 PM
Subject: Message from Harris
To: _CNCSALLEMPLOYEES

This message is from Harris Wofford:

It is with much sadness and much pleasure that I announce a major career shift for our greatly valued and trusted colleague, Shirley Sagawa. As most of you know, the Corporation's Board and I place great emphasis on strategic and long-range planning. Shirley and I both agreed that for planning to be done properly, someone would have to devote most, if not all, of his/her attention to the process. Shirley suggested that we allow her to shift her responsibilities from the day-to-day management that comes with being the Corporation's Executive Director, to being the Managing Director for Planning. So, while it is a great loss to lose Shirley as my right hand in the management of the Corporation's programs, it is with delight that I welcome her as our Managing Director for Planning. No one has contributed more to the Corporation and to the field of national service, and there is no one who can better help us plan for the future.

In approximately three weeks, Shirley will assume her new role, and Terry Russell, the Corporation's General Counsel, will become the Acting Executive Director. Terry will serve in that position until a permanent Executive Director is nominated by the President and confirmed by the Senate. The search for that nominee is beginning now. I appreciate Terry's willingness to serve, and trust that he will bring to this position all of the experience and good judgment he has shown as our General Counsel.



Federal Staff Directory

SS -
(1166)

815 Slaters Lane, Alexandria, VA 22314
(703) 739-0900 FAX (703) 739-0234

Biographical Update

Attached is your biographical sketch as it appeared in the 1996 *FEDERAL Staff Directory / 1*. Please review it and make any corrections and additions. This updated biography will appear in the 1996 *FEDERAL Staff Directory / 2*. We need this copy returned to us, with or without changes, within twenty (20) working days in order to meet our press deadline. If you should have any questions, please call Dorothy at (703) 739-0900, ext. 215. Thank you for your cooperation.

Sagawa, Shirley S., Executive Director, Corporation for National Service, 1201 New York Avenue, NW, Washington DC 20525. Born Aug. 25, 1961 in Rochester, NY to Hidetaka Hugh and Patricia (Ford) Sagawa. Married Oct. 7, 1989 to Gregory Arthur Baer; two children.

Education: Smith College (MA), 1979-83, A.B. in American Studies (magna cum laude, with highest honors), Phi Beta Kappa; London School of Economics, England, 1983-84, M.Sc.; Harvard Law School, 1984-87, J.D. (cum laude), *Law Review*.

Career Record: 1987-91, chief counsel for Youth Policy, Senate Com. on Labor and Human Resources; 1991-93, Senior Counsel, Natl. Women's Law Center; 1993-94, Executive Vice President and Managing Dir., then 1994-present Executive Dir., Corp. for National and Community Service. Admitted to MD Bar, 1988.

Publications and Other Media: "Batson v. Kentucky: Will it Keep Women on the Jury?" 3 *Berkeley Women's Law Journal*, 14, 1987-88; "Women in the Military Issue Papers," Natl. Women's Law Center, 1992; "Visions of Service: The Future of the National and Community Service Act," American Youth Policy Forum, 1993.

Awards: Truman Scholarship, 1981; Philip V. McGance Award for Exceptional Public Service, Center for the Advancement of Citizenship, 1991.

Member: Commission on Natl. and Community Service, vice chair, bd. of dir., 1991-1993; Smith College Club of Washington, DC; Organization of Pan Asian American Women; ~~Women's Information Network~~.

Religion: Episcopalian.

Interests: art, sewing, theater, music, tennis.

Alexandrine Medal, College of Saint Catherine 1995.

I have read my biography and it is OK.

OK with corrections.

Signature: _____

[Handwritten Signature]

Date: _____

4/30/96

Phone: _____

202 606 5000



CONGRESSIONAL
Staff Directories
FEDERAL • JUDICIAL

Dial (703) 739-0900

Post Office Box 62, Mount Vernon, VA 22121

FAX (703) 739-0234

April 26, 1996

Ms. Shirley S. Sagawa
Executive Director
Corporation for National Service
1201 New York Avenue, N.W.
Washington, DC 20525

Dear Ms. Sagawa:

You have again been selected by our Board of Editors for biographical coverage in the 23rd edition of the Federal Staff Directory to be published in September 1996.

Please review the attached copy from the 1996/1 edition. We will appreciate your returning this reprint with your corrections, additions or deletions within twenty working days. If you have any questions, or if you have a problem meeting this deadline, please call Dorothy Countryman at (703) 739-0900, extension 215.

May I remind you that your selection as a biographee and the publication of your biography has no connection with your buying anything. No one has ever paid his or her way into any Staff Directory publication.

Thank you,

Wayne Walker
Editorial Director



Federal Staff Directory

Sagawa, bio

(1193)

P.O. Box 62, Mount Vernon, VA 22121
(703) 739-0900 FAX (703) 739-0234

Biographical Update

Attached is your biographical sketch as it appeared in the 1995 FEDERAL Staff Directory / 1. Please review it and make any corrections and additions. This updated biography will appear in the 1995 FEDERAL Staff Directory / 2. We need this copy returned to us, with or without changes, within twenty (20) working days in order to meet our press deadline. If you should have any questions, please call Dorothy at (703) 739-0900, ext. 215. Thank you for your cooperation.

Sagawa, Shirley S., ^{Executive} Managing Director, Corporation for National Service, 1201 New York Avenue, NW, Washington DC 20525. Born Aug. 25, 1961 in Rochester, NY to Hidetaka Hugh and Patrieia (Ford) Sagawa. Married Oct. 7, 1989 to Gregory Arthur Baer; ~~one child~~ ^{two children}. **Education:** Smith College (MA), 1979-83, A.B. in American Studies (magna cum laude, with highest honors), Phi Beta Kappa; London School of Economics, England, 1983-84, M.Sc.; Harvard Law School, 1984-87, J.D. (cum laude), *Law Review*. **Career Record:** 1987-91, chief counsel for Youth Policy, Senate Com. on Labor and Human Resources; 1991-93, Senior Counsel, Natl. Women's Law Center; 1993-94, Executive Vice President, ~~then~~ 1994-present, Managing Dir., Corp. for National and Community Service, Admitted to MD Bar, 1988. **Publications:** "Batson v. Kentucky: Will it Keep Women on the Jury?" 3 *Berkeley Women's Law Journal*, 14, 1987-88; "Women in the Military Issue Papers," Natl. Women's Law Center, 1992; "Visions of Service: The Future of the National and Community Service Act," American Youth Policy Forum, 1993. **Awards:** Truman Scholarship, 1981; Philip V. McGance Award for Exceptional Public Service, Center for the Advancement of Citizenship, 1991. **Member:** Commission on Natl. and Community Service, vice chair, bd. of dir., 1991-1993; Smith College Club of Washington, DC; Organization of Pan Asian American Women; Women's Information Network. **Religion:** Episcopalian. **Interests:** ~~jewelry making~~ ^{art}, sewing, theater, music, tennis.

1994-present
Executive
Director

I have read my biography and it is OK.

OK with corrections.

Signature: _____ Date: _____ Phone: _____

 **CONGRESSIONAL**
Staff Directories
FEDERAL • JUDICIAL

Dial (703) 739-0900

Post Office Box 62, Mount Vernon, VA 22121

FAX (703) 739-0234

May 1, 1995

Ms. Shirley S. Sagawa
Managing Director
Corporation for National Service
1201 New York Avenue, N.W.
Washington, DC 20525

Dear Ms. Sagawa:

You have again been selected by our Board of Editors for biographical coverage in the 21st edition of the Federal Staff Directory to be published in September 1995.

Please review the attached copy from the 1995/1 edition. We will appreciate your returning this reprint with your corrections, additions or deletions within twenty working days. If you have any questions, or if you have a problem meeting this deadline, please call Dorothy Countryman at (703) 739-0900, extension 215.

May I remind you that your selection as a biographee and the publication of your biography has no connection with your buying anything. No one has ever paid his or her way into any Staff Directory publication.

Thank you,



Wayne Walker
Editorial Director

5/4/95
attached



S091 +4 P295

S091 +4 P293

S091 +4 P294