

FOIA MARKER

This is not a textual record. This is used as an administrative marker by the William J. Clinton Presidential Library Staff.

Collection/Record Group: Clinton Presidential Records

Subgroup/Office of Origin: Americorps

Series/Staff Member: General Files

Subseries:

OA/ID Number: 24240

FolderID:

Folder Title:

USDA/AmeriCorps - Clinton Library Copies - FY96 4th Quarter Progress Reports - NY-OR [New York-Oregon] [7]

Stack:

S

Row:

66

Section:

1

Shelf:

2

Position:

1

Withdrawal/Redaction Sheet

Clinton Library

DOCUMENT NO. AND TYPE	SUBJECT/TITLE	DATE	RESTRICTION
001. report	[Personally Identifiable Information] [partial] (10 pages)	06/04/1996	b(6)

COLLECTION:

Clinton Presidential Records
AmeriCorps
General Files
OA/Box Number: 24240

FOLDER TITLE:

USDA/AmeriCorps-Clinton Library Copies-FY96 4th Quarter Progress Reports-NY-OR [New York-Oregon] [7]

2013-0661-F

rs3839

RESTRICTION CODES

Presidential Records Act - [44 U.S.C. 2204(a)]

- P1 National Security Classified Information [(a)(1) of the PRA]
- P2 Relating to the appointment to Federal office [(a)(2) of the PRA]
- P3 Release would violate a Federal statute [(a)(3) of the PRA]
- P4 Release would disclose trade secrets or confidential commercial or financial information [(a)(4) of the PRA]
- P5 Release would disclose confidential advice between the President and his advisors, or between such advisors [(a)(5) of the PRA]
- P6 Release would constitute a clearly unwarranted invasion of personal privacy [(a)(6) of the PRA]

C. Closed in accordance with restrictions contained in donor's deed of gift.

PRM. Personal record misfile defined in accordance with 44 U.S.C. 2201(3).

RR. Document will be reviewed upon request.

Freedom of Information Act - [5 U.S.C. 552(b)]

- b(1) National security classified information [(b)(1) of the FOIA]
- b(2) Release would disclose internal personnel rules and practices of an agency [(b)(2) of the FOIA]
- b(3) Release would violate a Federal statute [(b)(3) of the FOIA]
- b(4) Release would disclose trade secrets or confidential or financial information [(b)(4) of the FOIA]
- b(6) Release would constitute a clearly unwarranted invasion of personal privacy [(b)(6) of the FOIA]
- b(7) Release would disclose information compiled for law enforcement purposes [(b)(7) of the FOIA]
- b(8) Release would disclose information concerning the regulation of financial institutions [(b)(8) of the FOIA]
- b(9) Release would disclose geological or geophysical information concerning wells [(b)(9) of the FOIA]

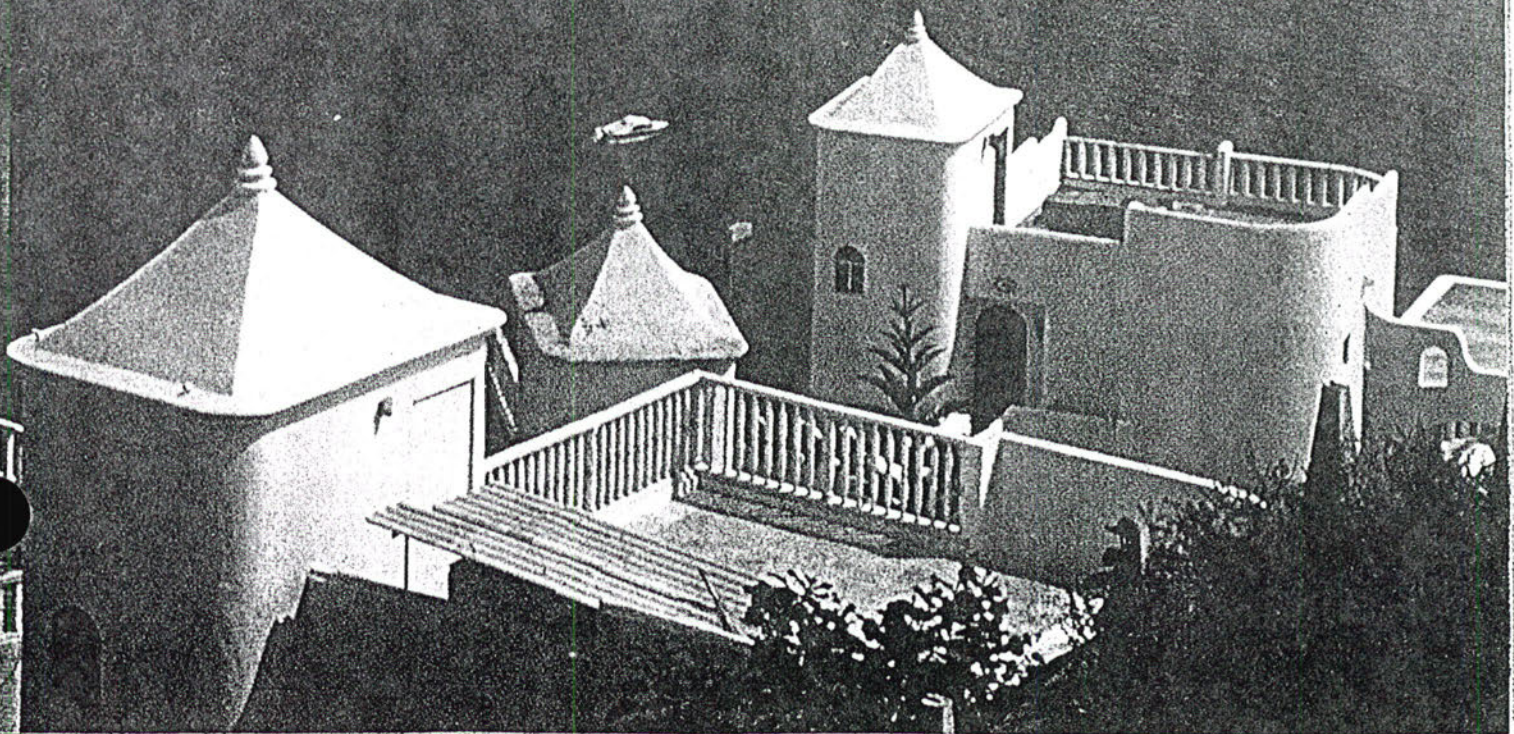
NOVEMBER 1995

PORTLAND • CHICAGO • ATLANTA • NEW YORK • COLUMBUS

America West

A I R L I N E S M A G A Z I N E

Ports That Call:
Manzanillo and
Puerto Vallarta



AMERICA WEST AIRLINES MAGAZINE

YOUR TAKE ON THE GO

Portland's Legacy of Green

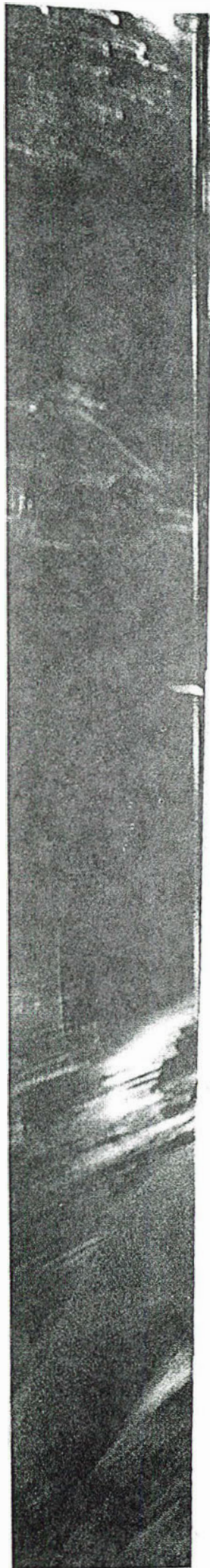
By Suzie Boss • Photography by Kristin Finnegan

W

hen Sha Spady gazes out her favorite window, she sees the steep walls of Newell Creek Canyon rising up behind a patchwork of fir and deciduous trees. Cloud cover blocks her view of snow-capped Mount Hood this afternoon, but the soft light coaxes out the many shades of green that paint these hills. Her father bought land on the edge of this wild canyon before she was born, and she grew up breathing in the smells, sights and sounds of a place that has remained remarkably untouched by time. Today, it's a dozen miles, but also a world removed, from the bustling streets of downtown Portland.

When a flicker drops in for a landing, ruffling its feathers, it reminds Spady that she shares this special place with creatures that have lived here since long before humans arrived to put Oregon on the map. "This canyon speaks without words, to something deeper and older than society," she says.

Forest Park:
a rural retreat
in Portland's
urban heart.





Above: South Park Blocks, a city set-aside, extends onto the campus of Portland State University. *Right:* Neighborly nature—a resident raccoon in Forest Park.

Thanks to the overwhelming passage of a \$135 million green-spaces bond measure last spring, Spady and future generations of Oregonians



will continue to share this undisturbed land with the birds and the deer and the fish that make their home here, a stone's throw away from the end of the Oregon Trail. Residents of the Portland metropolitan region have seized "a golden opportunity to preserve the future," says Spady. During the campaign for the bond measure, her passion was matched by hundreds more grass-roots activists who felt such a strong emotional connection to a favorite trail, stream, park or grove of trees that they walked door-to-door to get out the vote.

The money will be used to purchase and preserve green spaces throughout the region, creating

a network of wild places in the heart of a rapidly growing metropolitan area. Newell Creek Canyon is just one of 14 targets for what green-space proponents call "landbanking," or buying land outright to protect it from development. Another 90 smaller projects and five regional trails are included in the budget that voters approved, almost two to one. In all, 6,000 acres will be preserved, giving residents in every corner of the region easy access to the outdoors.

Portland's commitment to a green, livable future—for the mutual benefit of people and wildlife—offers inspiration and some useful lessons for other communities struggling with the problems that come hand-

in-hand with fast population growth. If one message is clear from Portland's experience, it's that livable communities don't happen by chance.

— — — — —
 few days before the May green-spaces election, Portland Mayor Vera Katz traveled to Florida to accept the prestigious Seaside Prize on behalf of her city. Typically awarded to individuals who have enhanced the quality of their communities, the Seaside Prize this year went to Portland to honor the city's visionary approach to urban planning. Katz called the award "a tribute to those who've planned for Portland's future wisely by thinking a generation ahead."

That willingness to look out for the next generation is the same thinking behind the current green-spaces project. "This is legacy stuff," says Ron Klein, who works on public education for a regional government agency called Metro. As he spreads out a map to highlight sites that will be preserved as green spaces, he says, "It's an opportunity for both wildlife and people to benefit."

(Continued on Page 66)

Portland

(Continued from Page 32)

As the nation's only elected regional governmental agency, Portland-based Metro has masterminded the green-spaces program as one piece of a much larger land-use planning agenda. From its headquarters on a busy street in an urban neighborhood on the rebound, Metro tackles such sweeping issues as transportation, waste disposal and, most significantly, land-use planning for a region that includes 24 cities in three counties.

In all, Metro oversees a diverse geographic region occupied by more than a million citizens. They live everywhere from country-club estates to inner-city housing projects, from squeaky-clean suburbs to one-main-street towns originally laid out by pioneers. Despite their geographic diversity, these residents share a willingness to speak up when asked what they want their community to look like in years to come. As Metro has worked to draft a vision statement called Region 2040 to guide growth over the next half-century, "Thousands of citizens, local governments, neighborhoods, businesses and interest groups became involved," says Metro Executive Officer Mike Burton.

Pockets of open space within this diverse region "offer places where you can find a slower pace of life, a refuge in the heart of a major urban area," says Bowen Blair Jr., who directs the Oregon office of the Trust for Public Land. That kind of breathing room will become ever more important

as Portland attempts to shoehorn future growth within existing urban boundaries.

Few doubt that growth is imminent for Portland. The only question is: How fast? Recent studies project the region's population will nearly double over the next 40 years. And because of Oregon's "hold-the-line" attitude toward growth, those additional million residents will have to find homes within existing urban areas. As the Portland region becomes more densely populated, urban green spaces "will keep people connected to the natural world," says Klein.

Adds Blair: "You can't create more dense cities unless you also have open space where people can escape to the outdoors." He believes it's no accident that one of Portland's most populated neighborhoods—Nob Hill, a bustling area packed with historic homes, galleries and restaurants—sits literally in the shadow of tranquil Forest Park.

Although the state's tradition of stewardship dates back much earlier, Oregon signed on to land-use planning as the official law of the land in the 1970s. By designating urban-growth boundaries around existing cities, and protecting outlying areas as farmland and forests, lawmakers made Oregon the first state in the U.S. to legally rein in the runaway sprawl that has altered the character of so many cities.

"It's so much like home I can have coffee in my robe."



There are times when a cup of coffee would taste just right. At Hawthorn Suites, we anticipate your needs, like a coffeemaker and coffee in the fully-equipped kitchen; an iron and ironing board in every suite; separate sleeping areas and complimentary breakfast

each morning. We even put some extra counter-space in the bathroom. Whether you stay a day, a week or longer, Hawthorn Suites is so much like home — you can just leave the cups in the sink. Ask for the "Suite Deal" rate when making your reservation.

HAWTHORN SUITES HOTELS

Stay a little closer to home.

1-800-555-1422



Ask for "Suite Deal" rates
call 1-800-555-1422

ATLANTA, Northwest \$95*

AUSTIN, Central \$95*

AUSTIN, Northwest \$95*

AUSTIN, South \$95*

CHARLESTON \$94*

CHICAGO, Lincolnshire \$109*

DALLAS, DFW Arlington \$85*

DALLAS, Market Center \$85*

DALLAS, Richardson \$85*

HOUSTON, Southwest \$89*

MINNEAPOLIS, Edina \$92*

OMAHA \$84*

ORLANDO \$89*

PITTSBURGH, Green Tree \$78*

SAN ANTONIO \$87*

SEATTLE, Kent \$84*

TULSA \$72*

*1 bedroom suite, rate based on availability and subject to change. Taxes and gratuities not included.

That bold step grew naturally out of what Klein calls "the Oregonian mindset." In this state, the entire Pacific coast is accessible to the public. Recycling is practiced with missionary zeal by Oregonians who are proud that their state passed the nation's first bottle-recycling bill. Portland civic leaders have repeatedly made national headlines for decisions that might seem eccentric to outsiders: turning a busy commuter highway into a grassy swath called Waterfront Park, or offering bus riders free transportation in the downtown corridor to encourage mass transit, or transforming a prime block of downtown real estate into a people-oriented, brick-lined plaza called Pioneer Courthouse Square.

Over the years, outsiders have come to see the wisdom in Portland's way of doing things. "A vibrant downtown, the sidewalks full of purposeful-looking citizens, clean, well-cared-for buildings, electric trolleys, water fountains that work, cops on bikes, greenery everywhere—could this be America?" asks James Howard Kunstler, author of *The Geography of Nowhere*. Portland feels so good, he adds, it's "like a city in another country."

Back in 1903, when Portland was on the cusp of an earlier population boom, landscape architect John Olmstead took stock of the community's spectacular geography. From a forested hillside on the west of the city, he savored the view that Portlanders continue to share with visitors when-

ever skies are clear: the Willamette and Columbia rivers sparkling in the foreground, with Mount Hood and Mount St. Helens gracing the horizon. Rather than drawing up plans for one grand park (as his father, Frederick, did with New York's Central Park), the younger Olmstead suggested that Portland link its natural features with a network of trails and green ways.

The Olmstead plan was never entirely completed, but the idea of "interconnected natural features" has shaped Portland's destiny, believes Klein. Today, hikers can traverse miles of trails within the 5,000 acres of Forest Park, the nation's largest urban wilderness preserve. Canoeists can paddle in close to shore for views of great-blue-heron rookeries along the Willamette River, which runs through downtown. Cyclists can explore the community along an ever-expanding network of bike lanes. And strollers can still share the same expansive view that Olmstead once enjoyed from the paths that hug tree-lined Terwilliger Boulevard.

As he has traveled around the country in his work with the conservation-minded Trust for Public Land, studying what gives communities their special sense of place, Bowen Blair has grown convinced that Portlanders see their city as a springboard for enjoying the outdoors. Having a personal connection with nature, he believes, "is a crucial part of being from Portland." ➤



A MILE
A MINUTE



OR
ONE GRAIN
AT A TIME

In most Southern California cities, you can spend a lot of your precious vacation time trying to get from one attraction to the next. That's great if you don't mind being cooped up in a car all day.

In Long Beach, everything you'd hope to experience on a Southern California vacation is all right here. Like kayaking in the blue Pacific. Roller-blading down the beach walk. Shopping along bustling Pine Avenue. Dining in a fabulous four-star restaurant. Whale watching. Strolling the deck of the majestic Queen Mary. Or collecting shells along one of our wide, sandy beaches.

Which is all to say that when you come to Long Beach, you'll spend less time getting to your vacation...and more time enjoying it.

For a vacation that's a change of pace, call the Long Beach Area Convention & Visitors Bureau at 1-800-452-7829.

LongBeach

Big City. Down By The Beach.

Long Beach Area Convention & Visitors Bureau • One World Trade Center, Suite 300 • Long Beach, California 90831-0300 • 310-436-3645 or 800-452-7829

more?

through 1994!

Best through 1994!



Road, Phoenix, AZ
open daily at 9:30 am

KEEP CLOSE TO YOUR
CLIENTS EVERY DAY WITH

Letts of London®

There's certainly no better way to stay close to your clients than by giving a Letts diary planner, the prestigious gift that has 180 years of tradition and product excellence built in.

Letts of London diaries are available in a range of styles and sizes, from simple pocket diaries to elaborate desk diaries, all of which can be customized with your logo or message or even information about your products or services.

Write or call today for a catalog.

Phone: (516) 724-5084. Fax: (516) 724-3053

I'm interested in 5 or less as personal gifts.

WI

State _____ Zip _____

Portland

The day after voters approved the green-spaces funds, Blair's phone didn't stop ringing. From across the country, his peers in land-conservation circles begged to know Portland's secret. With funding secure, the Trust for Public Land—a private, nonprofit organization that acts as a go-between on land-acquisition deals—could proceed with plans to purchase private lands from willing buyers, then convey them to the public domain as green spaces.

"It's exciting that Portland can be a role model for the nation," Blair says. "We have a community of people here who share a vision, who have a depth of understanding about issues like parks, land use and transportation. People are thinking regionally. And they share a real passion for the outdoors."

On a warm July morning, a crew of eight young workers in dusty blue-jeans takes a well-earned breather next to the giant dumpster they have nearly filled with debris. For 25 years, this parcel of land within shouting distance of Portland Airport has been swallowing up rubber tires, broken glass, scrap metal, kitchen sinks and anything else that trash haulers were given permission to dump by the previous landowner. As a fitting symbol, a broken toilet bowl stands at the front of the rubble pile.

Now that Metro has the funds to rehabilitate this site as a green space, workers from EnviroCorps (the national service organization launched by President Clinton) are doing the dirty work of reclaiming the pocket known as Whitaker Ponds. Some local residents are old enough to remember when the two spring-fed pools on this 21-acre site were deep, clean fishing holes instead of dark, dank ponds.

But the optimistic EnviroCorps workers envision the not-so-distant day when the water once again runs clean enough to support native fish and waterfowl. Already, they have started replanting the banks with

native vegetation. When completed, Whitaker Ponds will bring nature trails, picnic grounds, wildlife habitat and new recreational opportunities to a part of the city that houses some of its poorest neighborhoods.

"This is reality, right in your face," says Josh Feigin, a 24-year-old college graduate with a science degree who has traveled from Anchorage, Alaska, to become part of the EnviroCorps team in Portland. "We have a massive cleanup effort to do, but we're already seeing results." By July, the group had hauled out some 1,400 tires, 14 dump trucks filled with scrap wood and mountains of other debris. "We're denting it," Feigin says. Teenagers from nearby neighborhoods have been hired to help with the summer cleanup effort, and in the process gain some first-hand lessons in ecology.

Another member of the EnviroCorps crew, 27-year-old Brian Elliott of Wisconsin, points out a pair of great blue herons watching the crew from across the pond. "Even in a site with this much damage, wildlife is around," he says. "There are good ecological values in restoring it." By designing Whitaker Ponds to include both recreational areas and wildlife preserves, Elliott adds, "We'll have a healthy balance for people and animals."

And so it goes on the front lines of Portland's green-spaces movement, where both great blue herons and inner-city youth are being given a place to stretch their wings. Even in polluted pockets of the urban landscape, Oregonians can find reason to get excited about the outdoors. By salvaging one little piece of land at a time, they are building more breathing room into their neighborhoods, and feeding their dream of a livable city.

Indeed, as Portland braces for growth, its citizens can rest assured that their community of the future will remain wild at heart.

Suzie Boss is an editor and writer based in Portland. She frequently writes about environmental issues for *America West*.

MOBA MEDIA INC
Oregon's broadcast monitoring service

to: Jennifer
fr: Amy K.

(503) 223-1677

BOX 1583
PORTLAND OR
97207

SUBJECT EARTH

KINK RADIO PORTLAND

NOVEMBER 21, 1995; 5:19 AM

NEWSCASTER: Subject Earth. Metro's doing some major planting around the St. Johns landfill. Sprucing up the slough on KINK Subject Earth in a moment.

[COMMERCIAL]

NEWSCASTER: During the next couple of weeks, the envirocorps group will be planting more than a thousand trees and shrubs along the Columbia Slough's north bank. That's directly next to the St. Johns landfill. This planting is part of Metro's effort to close that landfill and integrate it into the surrounding wetlands.

Over time trees such as black cottonwood, Oregon ash, big leaf maple, and willows will improve fish habitat by shading the slough to reduce water temperature and excessive algae growth. The trees and plants will also give stream-side shelter and food for animals and birds. It's part of a multi-agency effort to improve the environmental condition of the Columbia Slough. During the next several years, Metro also plans to add native vegetation to all of that stream bank that borders the landfill.

For KINK Subject Earth, I'm Mike Rich on KINK FM 102.

Speaker interjections not contributing to context may have been excluded from this transcription. This material may be subject to copyright laws. Reproduction and public display are forbidden.

sm 159f

Attachment to Site Report Y41E

**ROGUE VALLEY
COUNCIL OF GOVERNMENTS
WATER RESOURCES DEPARTMENT**155 South Second Street
PO BOX 3275, CENTRAL POINT, OR 97502**PRESS RELEASE:**

Date: September 13, 1995
Contact: Dave Jacob, AmeriCorps
Phone: 664-6676 ext. 212 FAX: 664-7927

FOR IMMEDIATE RELEASE:**LOCAL EDUCATORS PLAN BEAR CREEK CLEANUP**

On Saturday, September 23rd from 9:00 am to 12:00 pm, students, educators, and citizens will be performing a cleanup along the Bear Creek Greenway at two locations: Lynn Newbry Park in Talent and Hawthorne Park in Medford. The group will be picking up trash along the Greenway and painting stormdrains near the parks. The purpose of stormdrain painting is to paint a fish symbol near the drain to inform the public of the need to be aware that what goes into the stormwater system ultimately ends up in the creek. The cleanup is a part of ongoing efforts to improve conditions in Bear Creek which does not meet federal and state clean water standards.

The cleanup is being sponsored by the Bear Creek Watershed Council's Committee for Public Information and Education. This committee, whose membership consists of local educators and agency representatives, has been meeting for more than a year. Their goal is to improve conditions in the watershed and create educational opportunities for local students. More and more educators and their students are becoming directly involved with improving the creek and its tributaries. Through the Adopt-a-Stream program, schools or classes are taking responsibility for a section of the creek. As a part of this program, students pick up trash twice a year and improve stream habitat and fisheries by planting trees and releasing salmon fry. Through these combined efforts, students are learning to be good stewards of our resources and that they can make a positive difference.

Other Bear Creek Cleanup sponsors include the Bear Creek Watershed Council, Rogue Valley Council of Governments, Medford Water Commission, the Watershed Education Team of Headwaters, and AmeriCorps. This project and other educational efforts are being supported with a grant from the Oregon Watershed Health Program using Oregon State Lottery funds.

[A brochure describing Bear Creek conditions and efforts to improve the creek is enclosed]



UMPQUA RIVER BASIN:

Sub basin watershed seminars for private landowners

I. A. INTRODUCTION

- 1.) A county commissioner will welcome landowners.
- 2.) An overview of U.B.F.R.I.

The Umpqua Basin Fishery Restoration Initiative is made-up of sixteen members, who are from government agencies, special interest groups, industry, and private landowners; all of which are appointed by the county commissioners. It's mission is to:

- a.) foster communication and coordination;
- b.) assess the success of the various restoration activities;
- c.) provide a mechanism for coordinating and integrating state, federal, and local restoration projects;
- d.) identify and prioritize restoration projects;
- e.) identify information gaps and areas where additional baseline data should be collected;

To help assure success in watershed and fishery restoration projects on private lands, the local community must set aside their differences and work together; so politics are left at the door. After review of projects and issues, individual landowners and agencies make their own decisions on the actions they will take. The committee meets monthly, with a published agenda, and is open for public attendance.

II. A. Purpose of sub basin watershed seminars.

The seminars have three primary purposes:

- 1.) to educate private landowners on watershed health, water quality, riparian enhancement, and other methods of fishery restoration;
- 2.) to seek private landowner participation to implement watershed enhancement;
- 3.) to achieve a grassroots effort to instill stewardship ethics.

There are a wide variety of possibilities for landowners interested in watershed enhancement; ranging from instream structures, to upland reseeded and replanting of trees. Landowners will be shown how to identify pollution from non

point sources such as roads, erosion, and other sources. They will also be introduced to riparian enhancement, and instream projects, all of which will enhance anadromous fisheries restoration efforts.

III. A. What is the objective of the watershed enhancement seminars?

- 1.) The seminars will be presented with a joint effort by: U.T.&E., S.W.C.D., O.D.F.W., D.E.Q., U.R.C.O.G., O.D.F., U.C.C., B.L.M., O.S.U. Extension Service, and corporate and private landowners;
- 2.) The seminars will emphasize the implementation of best management practices.

IV. What are the know facts of their sub basin?

A. Geographic characteristics of the sub basin.

- 1.) What is the size of the basin?
- 2.) Who are the landowners in the basin?
- 3.) What variety of land uses are in the basin?

B. What types of studies have been completed in the basin?

- 1.) O.D.F.W. : aquatic surveys, spawning surveys, stocking of unfed fry, juvenile fish surveys, and distribution of fish;
- 2.) B.L.M. : watershed assessment (if performed);
- 3.) D.E.Q.: monitoring.

C. Description and status of restoration in the basin.

- 1.) Description of current projects in the basin.
- 2.) Are there landowners who are interested in watershed enhancement?

V. How landowners can be better stewards of their land.

A. Available programs:

- 1.) Technical assistance from partners.

B. Education:

- 1.) The county will host seminars to help educate private landowners in watershed enhancement.
- 2.) U.T. & E. will initiate a job training program that will enable a restoration crew of twenty students for approximately ten weeks, to help install projects.

C. Assistance:

- 1.) Grants: R.&E., S.H.I.P., G.W.E.B., foundation, ect;

2.) Cost share.

D. Available incentives:

- 1.) Tax breaks offered by O.D.F.W.
- 2.) Harvest/replantings under O.D.F., and the Forest Practices Act.

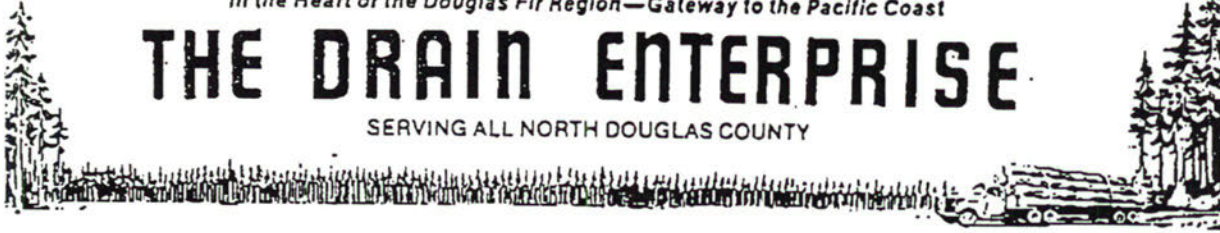
VI. SUMMARY

For the entire Umpqua River Basin U.B.F.R.I. will prioritize it's sub basins by presence of anadromous salmonids, in categories: LOW, MED, HIGH. The goal will be to hold six sub basin seminars in 1996, and to complete seminars for all sub basins rated in the MED and HIGH categories within five years. U.B.F.R.I. will also seek funding for proposed restoration projects within the Umpqua River Basin. U.T.& E. will concurrently campaign a public relations effort to inform the public of current watershed restoration efforts.

In the Heart of the Douglas Fir Region—Gateway to the Pacific Coast

THE DRAIN ENTERPRISE

SERVING ALL NORTH DOUGLAS COUNTY



VOL. 73 DRAIN, OREGON THURSDAY, OCTOBER 19, 1995 NO. 24 30¢

NCED elects board

North County Economic Development (NCED) group met last Thursday night at the Drain Civic Center for their quarterly meeting at 7 p.m. to elect board members and review the new strategic plan.

NCED now has its articles of incorporation and by-laws.

The following were elected as board members: Ann Warner, and Lee Russell, Drain; Wes Alsop, Elkton; Kent Smith and Dean Schilling, Yoncalla.

Kent Smith reviewed progress on the Milltown Hill Dam project. The Department of Environmental Quality will issue the 401 clean water permit if four conditions are meant. Smith felt the four conditions would not be a problem.

Extended phone service for Drain and Yoncalla to call each other for a monthly rate or measured rate went into effect Oct. 7.

The Americorps worker Pat McVean started to work Oct. 16 for the cities of Yoncalla, Drain and Elkton to help write grants and work with NCED. This will be her second year.

Ronn Knowles asked the board to contribute funds for the in-

stallation and maintenance of a reader board to be placed at the corner of First and B Streets. The 4 x 8 sign would be used to publicize school and community events. The board will act on the request later.

Kent Smith presented the strategic plan for the area NCED has been working on. A series of four meetings were held this summer gathering information from the three communities to write the plan. Each town came up with ideas and projects under the headings of: Workforce, Quality of Life, Infrastructure and Business.

Anyone who attended these meetings and other interested parties are welcome to review the document. The plan will be available at Drain, Yoncalla and Elkton City halls and at the libraries.

The strategic plan is important in securing many grants. Groups with grant money usually require to see if there is interest in a certain project or if the project is mentioned in a Strategic Plan.

Any comments about the plan should be directed to Kent Smith Yoncalla, by mid-November.



UNITED
STATES
DEPARTMENT
OF AGRICULTURE

August 27, 1996

TO: Bud Fischer, AmeriCorps Project Director, RD, Oregon

FROM: Joel Berg, USDA Director of National Service *JB*

SUBJECT: Year-to-Date Data on Objectives and Member Forms

Attached is a "year-to-date" progress report showing accomplishments on objectives through the third quarter report. **This data, plus the fourth quarter data, will be provided to members of Congress representing your state and to your agency leaders. It is imperative that the information reflected in this report be as accurate as possible.** The report also shows the degree to which you have accomplished your objectives which were agreed to at the beginning of this program year.

I ask that you carefully review this report. Review each objective with the following items in mind:

1. **Accuracy of the data.** This information will be shared with many different groups, and it is important to be accurate in our reporting as well as getting credit for all the great work you have done during the year.

2. **Completion of community service objectives.** One way to determine the successful completion of objectives is to measure accomplishments against the target quantity measurement which you established at the beginning of the year. The table below gives you a snapshot picture of your accomplishments through the third quarter. The last five columns reflects your work measured against the target quantity.

SITE #	NUMBER OF OBJECTIVES	NUMBER OF OBJECTIVES EXCEEDED	NUMBER OF OBJECTIVES AT 100%	NUMBER OF OBJECTIVES 50-100% COMPLETE	NUMBER OF OBJECTIVES 0-50% COMPLETE	NO TARGET QUANTITY
P41A	6	1	3		1	1
P41B	3	2			1	

3. **Program codes.** Review the program code for each of your objectives. Please be sure that the data you are recording for quantity matches the quantity for that program code. For example, the quantity measurement for program code R026A is the number of homes actually repaired. If you are counting something other than the quantity measurement for the code, please indicate exactly what you are counting.

4. **Congressional Districts.** Please indicate in which Congressional District(s) the work was actually accomplished. This will let us be very specific to Members of Congress as to what work was done in their district.

5. **Volunteers.** Please explain what the volunteers have done with your AmeriCorps members. Also ensure that the volunteer numbers you have been providing to us each quarter is for the quarter **only**, not cumulative for the year.

Your assistance in this reporting enables us to meet our legal obligations as well as providing us with the necessary information to promote our USDA AmeriCorps program to all interested parties. Providing this data in an accurate and timely manner is one of your most important duties as an AmeriCorps Project Director.

Member Forms

A review of your member forms reveals that they are current and up-to-date. Great job.

If you have any questions or problems, please contact Dee DiFiore at (202) 690-3051 or Ron DeMunbrun at (202) 690-3894.

Thank you for your cooperation on this matter.

Attachment

cc:

Jim Coyle, AmeriCorps Project Director, RD

USDA AMERICORPS - 95ADFDC047XXXX

FIRST THREE QUARTERS' PROGRESS TOWARDS ACCOMPLISHING ORIGINAL COMMUNITY SERVICE OBJECTIVES
BY STATE AND PROGRAM (OBJECTIVE) CODE

8/27/96
2:11 pm

State	OP Site	Obj No.	PGM Code	Obj/Impact Statement	Year's QTY Target	QTY Unit of Measure	FIRST 3 QTR's Quantity	PERCENT COMPLETE
OR	P41A	4	EN-E011B	Pow-Wow Grounds Study	1	sites - inventoried	1	50.00 %
OR	P41A	3	EN-E011B	Tribal Cementary Inventory	1	sites - inventoried	1	125.00 %
OR	P41A	6	EN-E096B	Existing wetlands aided		acres - restore wetlands	2	0.00 %
OR	P41A	2	EN-R026A	Assistance provided in obtaining repairs for home health & safety standards	7	homes - repairs	10	142.86 %
OR	P41A	5	EN-R045	Computer training	6	people - computer training	6	100.00 %
OR	P41A	1	EN-R071A	Update/upgrade tribal sewer system	1	systems - water	0	0.00 %

USDA AMERICORPS - 95ADPDC047XXXX

FIRST THREE QUARTERS' PROGRESS TOWARDS ACCOMPLISHING ORIGINAL COMMUNITY SERVICE OBJECTIVES
BY STATE AND PROGRAM (OBJECTIVE) CODE

8/27/96

2:11 pm

State	OP Site	Obj No.	PGM Code	Obj/Impact Statement	Year's		FIRST 3 QTR's Quantity	PERCENT COMPLETE
					QTY Target	QTY Unit of Measure		
OR	P41B	1	EN-R026A	Assistance provided in obtaining repairs for home health & safety hazards	5	homes - repairs	8	160.00 %
OR	P41B	2	EN-R041A	Revolving loan fund outreach	6	people - loan program	11	183.33 %
OR	P41B	3	EN-R083A	Outreach rural invest. fund	5	applications	0	0.00 %

Withdrawal/Redaction Marker

Clinton Library

DOCUMENT NO. AND TYPE	SUBJECT/TITLE	DATE	RESTRICTION
001. report	[Personally Identifiable Information] [partial] (10 pages)	06/04/1996	b(6)

COLLECTION:

Clinton Presidential Records
AmeriCorps
General Files
OA/Box Number: 24240

FOLDER TITLE:

USDA/AmeriCorps-Clinton Library Copies-FY96 4th Quarter Progress Reports-NY-OR [New York-Oregon] [7]

2013-0661-F
rs3839

RESTRICTION CODES**Presidential Records Act - [44 U.S.C. 2204(a)]**

- P1 National Security Classified Information [(a)(1) of the PRA]
- P2 Relating to the appointment to Federal office [(a)(2) of the PRA]
- P3 Release would violate a Federal statute [(a)(3) of the PRA]
- P4 Release would disclose trade secrets or confidential commercial or financial information [(a)(4) of the PRA]
- P5 Release would disclose confidential advice between the President and his advisors, or between such advisors [(a)(5) of the PRA]
- P6 Release would constitute a clearly unwarranted invasion of personal privacy [(a)(6) of the PRA]

C. Closed in accordance with restrictions contained in donor's deed of gift.

PRM. Personal record misfile defined in accordance with 44 U.S.C. 2201(3).

RR. Document will be reviewed upon request.

Freedom of Information Act - [5 U.S.C. 552(b)]

- b(1) National security classified information [(b)(1) of the FOIA]
- b(2) Release would disclose internal personnel rules and practices of an agency [(b)(2) of the FOIA]
- b(3) Release would violate a Federal statute [(b)(3) of the FOIA]
- b(4) Release would disclose trade secrets or confidential or financial information [(b)(4) of the FOIA]
- b(6) Release would constitute a clearly unwarranted invasion of personal privacy [(b)(6) of the FOIA]
- b(7) Release would disclose information compiled for law enforcement purposes [(b)(7) of the FOIA]
- b(8) Release would disclose information concerning the regulation of financial institutions [(b)(8) of the FOIA]
- b(9) Release would disclose geological or geophysical information concerning wells [(b)(9) of the FOIA]

6/04/96

10. MEMBER DATA:

DP SITE ID: P41A

Site Supervisor: Richard Anderson

PHONE: 503-472-1461

Agency/Org Name: RECD/RHCDS

FAX: 5034656347

STATE: OR

City: McMinnville, OR

No. of Members Allocated by USDA: 1

Member Name	SSN	SER STAT	PGM STAT	TRT STAT	HOURS				Total
					1st Rpt	2nd Rpt	3rd Rpt	4th Rpt	
HOAR, STEPHEN T.	(b)(6)	F	A	A	288	504	447.5		1239.5
Total Hours:									1239.5

The number of Members allocated should equal the number of active members, those members whose trust status is "A" and whose Program Status is "A". If your report shows five members with "A" "A" status and yet you only have four active members, this means you have not submitted an end of term of service form for the member for the member who is no longer active. Conversely, if your report shows five members with an "A" "A" status and you actually have six members active, you have not submitted an enrollment form for the active member whose name is not shown on this report. If that is the case, list the names, SSN, Status and hours of the missing members on this sheet and send the enrollment forms to the USDA Director of National Service. If enrollment form was sent directly to the Corporation, send copies to the USDA Director of National Service immediately. If you have replaced members be certain to indicate whether the replacements are full or part-time [NOTE: The USDA Director of National Service must approve conversion of full-time slots to part-time slots IN ADVANCE.]

REMEMBER, MEMBERS WHOSE FORMS HAVE NOT BEEN RECEIVED AT USDA ARE NOT CONSIDERED ENROLLED IN THE PROGRAM AND THEIR BENEFITS (EDUCATION AWARD, ETC.) ARE JEOPARDIZED!!!

6/04/96

10. MEMBER DATA:

OP SITE ID: P41B

Site Supervisor: Roseanne Volker-Bronso

PHONE: 503-465-6443

STATE: OR

Agency/Org Name: RECD/RHCDS

FAX: 5034656483

City: Eugene, OR

No. of Members Allocated by USDA: 1

Member Name	SSN	SER STAT	PGM STAT	TRT STAT	HOURS				Total
					1st Rpt	2nd Rpt	3rd Rpt	4th Rpt	
HANNIBAL, DARCY	L. (b)(6)	F	A	A	336	512	456		1304

Total Hours: 1304

* The number of Members allocated should equal the number of active members, those members whose trust status is "A" and whose Program Status is "A". If your report shows five members with "A" "A" status and yet you only have four active members, this means you have not submitted an end of term of service form for the member for the member who is no longer active. Conversely, if your report shows five members with an "A" "A" status and you actually have six members active, you have not submitted an enrollment form for the active member whose name is not shown on this report. If that is the case, list the names, SSN, Status and hours of the missing members on this sheet and send the enrollment forms to the USDA Director of National Service. If enrollment form was sent directly to the Corporation, send copies to the USDA Director of National Service immediately. If you have replaced members be certain to indicate whether the replacements are full or part-time [NOTE: The USDA Director of National Service must approve conversion of full-time slots to part-time slots IN ADVANCE.]

REMEMBER, MEMBERS WHOSE FORMS HAVE NOT BEEN RECEIVED AT USDA ARE NOT CONSIDERED ENROLLED IN THE PROGRAM AND THEIR BENEFITS (EDUCATION AWARD, ETC.) ARE JEOPARDIZED!!!

11. Please list the total number of **volunteers** who took part in activities which were sponsored or organized by all the Members in the state during this period.

1st Qtr.	2nd Qtr.	3rd Qtr.	4th Qtr.	Total
<u>0</u>	<u>0</u>	<u>0</u>	<u> </u>	<u> </u>

12. Please list the total number of **hours of community service** completed by the volunteers cited above during this period.

1st Qtr.	2nd Qtr.	3rd Qtr.	4th Qtr.	Total
<u>0</u>	<u>0</u>	<u>0</u>	<u> </u>	<u> </u>

SECTION IV - PROGRESS TOWARDS ACCOMPLISHING SERVICE OBJECTIVES:

13. **Original Community Service Objectives:** Attached are sheets summarizing the community service objectives that were originally approved for each operating site. In cases where a single objective may take an entire year to complete, that objective may have a sub-objectives listed. **You need to fill in the column marked "3rd QTR Quantity" and the column marked "3rd QTR Success" --- as well as any column that is blank, has a zero, or has a question mark --- for EVERY operating site.** Each chart should have the following columns:

"State" - The standard two-letter code for your state

"Obj No" - Each community service objective for each site is assigned an individual number

"Op Site" - Each site's unique operating site identification

"PGM Code" - Each type of service has been assigned a unique code to describe that type of service. See the appendix to this report entitled "Community Service PGM Code List"

"Obj/Impact Statement" - A few words verbally summarizing the community service objective

"Year's QTY Target" - The year's numerical goal for the people or things to be aided

"Target Unit of Measurement" - The unit of measure used in the previous column

"3rd QTR Quantity" - Provide a hard number indicating progress towards the "Year's QTY Target"

"Year's Success Target" - Number for a way of measuring *quality* of service provided --- if this column is blank, has a question mark, or has a zero, please replace it with the accurate information

"Success Unit of Measure" - Explanation of the number in the previous column --- if this column is blank, has a question mark, or has a zero, please replace it with the accurate information

"3rd QTR Success" - Provide a hard number indicating progress towards the "Year's Success Target"

QUESTION 13. PROGRESS TOWARDS ACCOMPLISHING ORIGINAL COMMUNITY SERVICE OBJECTIVES
 (Fill in All Blank Columns or Those with Question Marks. Use the Attached Blank Form to Enter New Objectives.)

State	OP Site	Obj No.	PGH Code	Obj/Impact Statement	Year's QTY Target	QTY Unit of Measure	To date Quantity	Year's Success Target	Success Unit of Measure	To date Success
OR	P41A	1	R071	Update/upgrade tribal sewer system	1	sewer system updated	0	3000	# of tribal members who benefit	0
OR	P41B	1	R026	Assistance provided in obtaining repairs for home health and safety hazards	5	homes repaired	10	7	# of applications received because of Member's outreach	19
OR	P41B	2	R041	Revolving loan fund outreach	6	loans made	8	30	# of new jobs created or saved	42

14. PROGRESS TOWARDS ACCOMPLISHING ADDITIONAL COMMUNITY SERVICE OBJECTIVES

Use this section to report progress towards completing additional new objectives --- those objectives in addition to the main objectives of each project listed on the preceding page. Please fill in all columns for all objectives. It is important to make sure that each objective is listed with its own "OP site" (Operating site) code; this ensures that we know precisely what service is performed at each site. Please fill in all columns for each objective. Under "Obj No.," please give each new objective a number different from the number used for any of the objectives on the preceding page. Under "PGM Code", please use a one-letter and three-digit code to describe the service from the code list provided at the end of this report. Under "Obj/Impact statement," provide a several-word summary of the nature of the service project -- this verbal summary should roughly match the "PGM Code" listed in the previous column. Under "Year's QTY Target," provide a hard number for the people or things aided. Under "Target Unit of Measurement," specify what unit of measure was used in the previous column -- such as miles, number of people served, acres, etc. Under "1st QTR Quantity," provide a hard number indicating progress towards the "Year's QTY Target" that was accomplished during this reporting period. Under "Year's Success Target," provide a hard number for a way of measuring how well the service was provided. Under "Successes Unit of Measure," specify exactly what the number in the previous column meant. Under "1st QTR Success," provide a hard number indicating progress towards the "Year's Success Target" that was accomplished during this reporting period.

State	Op Site	Obj No.	PGM Code	Obj/Impact statement	Year's QTY Target	Unit of Measure	1st QTR Quantity	Year's Success Target	Success Unit of Measure	1st QTR Success
(SAMPLE:)										
CA	Y05A	18	EN96	Constructing whale nesting boxes	3	Boxes	1	90	% meeting stand.	95%
OR	P41A		ED10	Tribal Cemetery Inventory	1	Site	1	100	% inventory completed	75% ✓
OR	P41A		ED11	Pow-Wow Grounds Study	1	Site	1	100	% study completed	50%
OR	P41A		RO45	Computer Training	6	People	6	100	% training completed	60%
OR	P41A		ED06	Mitigation-Wetland Transfers	2	Sites	2	100	% process completed	75%
OR	P41B		RO05	Outreach-Rural Invest. Fund	5	apps. for funds	0	25	% of funds spent in Lane County Sprojects	0%

15. COMMUNITY SERVICE OBJECTIVE NARRATIVE

Op. Site P41A:

Obj. 1- Update/upgrade tribal sewer system

The Member has continued to work with the local community and tribal government addressing update/upgrades to the community sewer system. Housing issues are the main concern to the tribe and current plans to expend tribal housing through the Tribal Housing Department are in progress. However, the planning for future development is restricted due to the limitations of the sewer system. During, the third quarter, the Member has facilitated a number of meetings involving engineering consultants. These meetings generated conceptual approaches and proposals for current and future expansion of the community's sewer infrastructure. Further, these proposals will be used in a July meeting to establish an approach to acquire the funding needed for the sewer system expansion. The corrections and repairs to the system would allow for approximately 186 housing units to be connected to the current sewer system.

Obj. 2- Tribal Cemetery Inventory

The Member has been trying to find a way to inventory the site without disturbing buried tribal members and has found a piece of equipment that is non intrusive called a Subsurface Interface Radar (SIR). The SIR will benefit the Tribe in the cemetery inventory but in many areas of site investigations. The Member has been working with a Doctor in Anthropology from Oregon State University to pursue and secure land that has been inhabited by past generations.

Obj. 3- Pow-Wow Grounds Study

The Member continued the study on how the Tribe can best use the Pow-Wow grounds to its maximum potential. He has completed 50% of the study.

Obj. 4- Computer Training

The Member continues to work with 6 co-workers at the Public Works Department, all at different levels of understanding and proficiency, on the use of Microsoft Windows. He has worked with two separate software packages for the Tribal Housing Authority and the Tribal Maintenance Facilities Department. As a result, the Tribal Housing Authority personnel using the new software are able to perform credit report, purchase analysis, and client research and the Tribal Maintenance Facilities Department personnel are able to track inventories, generate work orders, and perform cost analysis for property repairs.

Obj. 5- Mitigation-Wetland Transfers

The Member has provided assistance to the Tribe on the wetland delineation and mitigation process for two sites. His work is 75% complete and has established the ground work for tribal development and land acquisitions. Currently, a 38-unit manufactured housing sub-division site has already been approved by the Army Corps of Engineers.

Op. Site P41B:

Obj. 1- Assistance provided in obtaining repairs for home and health and safety standards

Because the grant funds have run out and the loan funds have nearly run out, the Member has suspended her marketing of the program and is solely doing site visits for the few calls that continue to come in requesting loan assistance. In this quarter, she has made 5 site visits. This has resulted in a total of 10 loans and/or grants being approved, double the amount that was targeted.

Obj. 2- Rural loan fund outreach

The Lane Council of Governments (LCOG) established the Rural Business Development Fund (RBDF) with a loan it received from USDA. During this quarter, the Member has continued to work with LCOG's Loan Manager to provide outreach for the program by distributing flyers and brochures, scheduling and giving presentations with local community groups, and sending out press releases about projects the program has funded. As of the end of the third quarter, eight small businesses in rural areas have been able to start up or expand and 42.5 jobs in Lane County have been created or saved. The Member has now exceeded her target amount of loans made by two and her target amount of jobs created or saved by twelve.

Obj. 3- Outreach-Rural Investment Fund

In the third quarter, the Rural Action Plan Committee of the Regional Strategies Board drafted a Rural Action Plan and sent it out to all survey respondents, who then had the opportunity to comment on the Rural Action Plan and suggest changes at some public hearings in May. The Member is now ready for the Rural Action Plan Committee to finish their review of the draft and be ready to go ahead with the proposal process. When this process begins, the Member will work with LCOG to distribute information about applying for Rural Investment Fund moneys and assist applicants to complete proposals.

16. COMMUNITY BUILDING OBJECTIVES NARRATIVE

None to report for this quarter.

17. AMERICORPS MEMBER DEVELOPMENT OBJECTIVES NARRATIVE

None to report for this quarter.

18. UNIQUE SUCCESSES OR GREAT STORIES

Op. Site P41A:

The Member oversaw the environmental issues involved with a 12 acre parcel that had abandoned petroleum tanks that had leaked. The Member had the site restored by having the tanks pulled and site all of the contaminated soil removed. This allowed to the Tribe to claim the 12 acres as trust land. This also resulted in the opening of a new tribal market and in the continued operation of a tribal commercial enterprise located on the restored site. The business have created 5 new full time and 10 part time jobs and have allowed 20-40 artisans to have a place to sell their arts and crafts.

Op. Site P41B:

One of the Section 504 applicants the Member met with this quarter called, after the work had been completed on her home, to thank the Member for helping her fill out the application and get all of the paperwork in. She is an elderly woman living alone, with only a handful of family and friends-none of which live nearby. The Member felt this very gratifying to have been able to provide assistance to her, who would have fallen through the cracks, if there had been no one to visit her at her home and take the time to sit down and walk her through the paperwork and procedures.

19. DIFFICULTIES FACED BY THE PROGRAM

None to report for this quarter.

20. NATIONAL IDENTITY ACTIVITIES

Op. Site P41A:

The Member has continued to explain the AmeriCorps experience to tribal members.

Op. Site P41B:

On June 27th and 28th, the Member attended the Year End Celebration for AmeriCorps Members in Oregon, sponsored by the Oregon Commission for national and Community Service. While she was there, she had the opportunity to meet and talk with AmeriCorps Member from other parts of the state and attend a few workshops that were offered during the Celebration. The Member was also a peer presenter of one of the workshops at the Celebration on the subject of "Outreach, Program Marketing, and Press Releases". During the workshop, the Member talked with other AmeriCorps Members about events and programs that they were trying to publicize and offered them examples of strategies and materials that could use.

AmeriCorps *USA

PHOTOCOPY
PRESERVATION

USDA State Progress Report (CNS Grant No. 95ADFDC047)

1. Check this reporting period: First (10/1 - 12/31) Second (1/1 - 3/31) Third (4/1 - 6/30) Fourth (7/1 - 9/30)

SECTION I - STATE INFORMATION

2. State: Oregon

3. Agency: ARS NRCS Forest Service RECD FSA FCS

SECTION II - STATE CONTACT INFORMATION: (Make Corrections if Necessary)

4. Contact Name: Bud Fischer Last
 RECD State Office
 101 S.W. Main, Suite 1410
 5. Title: _____ Portland OR 97204

6. Address: _____
 street, number, and PO (if applicable)

 City State Zip

7. Telephone number: 503 - 414 - 3356

8. Fax number: 503 - 411 - 3398

9. E-Mail Address (if any): !a32orrdc

2/05/96

10. MEMBER DATA:

OP SITE ID: P41A

Site Supervisor: Richard Anderson

PHONE: 503-472-1461

Agency/Org Name: RECD/RIHCDS

FAX: 5034656347

STATE: OR

City: McMinnville, OR

No. of Members Allocated by USDA: 1

Member Name	SSN	SER STAT	PGM STAT	TRT STAT	HOURS				Total
					1st Rpt	2nd Rpt	3rd Rpt	4th Rpt	
HOAR, STEPHEN T.	(b)(6)	P	A	A	287.5	504			791.5

No. of Members Allocated by USDA: 1

No. of Active Members Whose Enrollment Forms were recieved at USDA (not including terminations): 1

No. of Members for Whom Forms Have NOT Been Recieved*: 0

ENTER the number of vacancies that you intend to fill in the next reporting period: 0

ENTER the number of vacancies you intend to relinquish for the program year: 0

If the number of Members allocated is greater than the number of forms received, there are four options: 1. There are Members enrolled in programs whose forms have not been submitted to the USDA Director of National Service. If that is the case, list the names, SSN, Status and hours of the missing members on the back of this sheet and send the enrollment forms to the USDA Director of National Service. 2. The enrollment forms were sent directly to the Corporation. If that is the case, send copies to the USDA Director of National Service immediately. 3. There are vacancies in your program you intend to fill in the next reporting period. If that is the case, enter the number of vacancies on the appropriate line. 4. There are vacancies that you can not fill and you are relinquishing them.

REMEMBER, MEMBERS WHOSE FORMS HAVE NOT BEEN RECEIVED AT USDA ARE NOT CONSIDERED ENROLLED IN THE PROGRAM AND THEIR BENEFITS (EDUCATION AWARD, ETC.) ARE JEOPARDIZED!!!

If the number of members for whom forms have been received is greater than the number of members allocated resulting in a negative number appearing in the "No. of Members for Whom Forms Have NOT Been Received" line, you have enrolled more members in your program than authorized. Please explain this over enrollment. It may be that some members have terminated, in which case, change their status on this form and submit the proper end of term of service form to the USDA Director of National Service

1996

10. MEMBER DATA:

MEM ID: P41A Site Supervisor: Richard Anderson PHONE: 503-472-1461
 Agency/Org Name: RECD/RIICDS FAX: 5034656347
 STATE: OR City: McMinnville, OR

Members Allocated by USDA: 1

Member Name	SSN	SER STAT	PGM STAT	TRT STAT	HOURS				Total
					1st Rpt	2nd Rpt	3rd Rpt	4th Rpt	
STEPHEN	(b)(6)	F	A	A	287.5	504			791.5

No. of Members Allocated by USDA: 1

Active Members Whose Enrollment Forms were recieved at USDA (not including terminations): 1

No. of Members for Whom Forms Have NOT Been Recieved*: 0

ENTER the number of vacancies that you intend to fill in the next reporting period: 0

ENTER the number of vacancies you intend to relinquish for the program year: 0

number of Members allocated is greater than the number of forms received, there are four options: 1. There are Members enrolled in programs whose forms have not been submitted to the USDA Director of National Service. If that is the case, list the names, SSN, Status and hours of the missing members on the back of this sheet and submit the enrollment forms to the USDA Director of National Service. 2. The enrollment forms were sent directly to the Corporation. If that is the case, explain to the USDA Director of National Service immediately. 3. There are vacancies in your program you intend to fill in the next reporting period. If that is the case, enter the number of vacancies on the appropriate line. 4. There are vacancies that you can not fill and you are relinquishing them.

NOTE: MEMBERS WHOSE FORMS HAVE NOT BEEN RECEIVED AT USDA ARE NOT CONSIDERED ENROLLED IN THE PROGRAM AND THEIR BENEFITS (EDUCATION AWARD, ETC.) ARE JEOPARDIZED!!!

number of members for whom forms have been received is greater than the number of members allocated resulting in a negative number appearing in the "No. of Members for Whom Forms Have NOT Been Received" line, you have enrolled more members in your program than authorized. Please explain this over enrollment. It may be that some members have terminated, in which case, change their status on this form and submit the proper end of term of service form to the USDA Director of National Service.

APP 4 05 12:54 FROM F M H T

2/05/96

10. MEMBER DATA:

OP SITE ID: P41B
STATE: OR

Site Supervisor: Holliday Loretta
Agency/Org Name: RECD/RIICDS
City: Eugene, OR

PHONE: 541 -465-6443
FAX: 5414656483

No. of Members Allocated by USDA: 1

Member Name	SSN	SER STAT	PGM STAT	TRT STAT	HOURS				Total
					1st Rpt	2nd Rpt	3rd Rpt	4th Rpt	
HANNIBAL, DARCY	L. (b)(6)	F	A	A	336	512			848

No. of Members Allocated by USDA: 1

No. of Active Members Whose Enrollment Forms were recieved at USDA (not including terminations): 1

No. of Members for Whom Forms Have NOT Been Recieved*: 0

ENTER The number of vacancies that you intend to fill in the next reporting period: 0

ENTER the number of vacancies you intend to relinquish for the program year: 0

* If the number of Members allocated is greater than the number of forms received, there are four options: 1. There are Members enrolled in programs whose forms have not been submitted to the USDA Director of National Service. If that is the case, list the names, SSN, Status and hours of the missing members on the back of this sheet and send the enrollment forms to the USDA Director of National Service. 2. The enrollment forms were sent directly to the Corporation. If that is the case, send copies to the USDA Director of National Service immediately. 3. There are vacancies in your program you intend to fill in the next reporting period. If that is the case, enter the number of vacancies on the appropriate line. 4. There are vacancies that you can not fill and you are relinquishing them.

REMEMBER, MEMBERS WHOSE FORMS HAVE NOT BEEN RECEIVED AT USDA ARE NOT CONSIDERED ENROLLED IN THE PROGRAM AND THEIR BENEFITS (EDUCATION AWARD, ETC.) ARE JEOPARDIZED!!!

If the number of members for whom forms have been received is greater than the number of members allocated resulting in a negative number appearing in the "No. of Members for Whom Forms Have NOT Been Received" line, you have enrolled more members in your program than authorized. Please explain this over enrollment. It may be that some members have terminated, in which case, change their status on this form and submit the proper end of term of service form to the USDA Director of National Serv

05/96

10. MEMBER DATA:

SITE ID: P41B Site Supervisor: Holliday Loretta
 Agency/Org Name: RECD/RIICDS
 STATE: OR City: Eugene , OR

PHONE: 541 -465-6443
 FAX: 5414656483

of Members Allocated by USDA: 1

Member Name	SSN	SER STAT	PGM STAT	TRT STAT	HOURS				Total
					1st Rpt	2nd Rpt	3rd Rpt	4th Rpt	
NNIBAL, DARC	I. (b)(6)	P	A	A	336	512			848

No. of Members Allocated by USDA: 1

of Active Members Whose Enrollment Forms were recieved at USDA (not including terminations): 1

No. of Members for Whom Forms Have NOT Been Recieved*: 0

ENTER the number of vacancies that you intend to fill in the next reporting period: 0

ENTER the number of vacancies you intend to relinquish for the program year: 0

the number of Members allocated is greater than the number of forms received, there are four options: 1. There are Members enrolled in programs whose forms have not been submitted to the USDA Director of National Service. If that is the case, list the names, SSN, Status and hours of the missing members on the back of this sheet and send the enrollment forms to the USDA Director of National Service. 2. The enrollment forms were sent directly to the Corporation. If that is the case, send copies to the USDA Director of National Service immediately. 3. There are vacancies in your program you intend to fill in the next reporting period. If that is the case, enter the number of vacancies on the appropriate line. 4. There are vacancies that you can not fill and you are relinquishing them.

EMPHASIS: MEMBERS WHOSE FORMS HAVE NOT BEEN RECEIVED AT USDA ARE NOT CONSIDERED ENROLLED IN THE PROGRAM AND THEIR BENEFITS (EDUCATION AWARD, ETC.) ARE JEOPARDIZED!!!

The number of members for whom forms have been received is greater than the number of members allocated resulting in a negative number appearing in the "No. of Members for Whom Forms Have NOT Been Received" line, you have enrolled more members in your program than authorized. Please explain this over enrollment. It may be that some members have terminated, in which case, change their status on this form and submit the proper end of term of service form to the USDA Director of National Service.

APP 4 05E 12:55 FROM FNH

11. Please list the total number of volunteers who took part in activities which were sponsored or organized by all the Members in the state during this period.

1st Qtr.	2nd Qtr.	3rd Qtr.	4th Qtr.	Total
0	0			

12. Please list the total number of hours of community service completed by the volunteers cited above during this period. (In question 18, briefly explain what these volunteers accomplished)

1st Qtr.	2nd Qtr.	3rd Qtr.	4th Qtr.	Total
0	0			

SECTION IV - PROGRESS TOWARDS ACCOMPLISHING SERVICE OBJECTIVES:

13. **Original Community Service Objectives:** Attached are sheets summarizing the community service objectives that were originally approved for each operating site. In cases where a single objective may take an entire year to complete, that objective may have a sub-objective listed. You need to fill in the column marked "1st QTR Quantity" and the column marked "1st QTR Success" — as well as any column that is blank, has a zero, or has a question mark — for EVERY operating site. Each chart should have the following columns:

"State" - The standard two-letter code for your state

"Obj No" - Each community service objective for each site is assigned an individual number

"Op Site" - Each site's unique operating site identification

"PGM Code" - Each type of service has been assigned a unique code to describe that type of service. See the appendix to this report entitled "Community Service PGM Code List"

"Obj/Impact Statement" - A few words verbally summarizing the community service objective

"Year's QTY Target" - The year's numerical goal for the people or things to be aided

"Target Unit of Measurement" - The unit of measure used in the previous column

"1st QTR Quantity" - Provide a hard number indicating progress towards the "Year's QTY Target"

"Year's Success Target" - Number for a way of measuring quality of service provided --- if this column is blank, has a question mark, or has a zero, please replace it with the accurate information

"Success Unit of Measure" - Explanation of the number in the previous column --- if this column is blank, has a question mark, or has a zero, please replace it with the accurate information

"1st QTR Success" - Provide a hard number indicating progress towards the "Year's Success Target"

QUESTION 13. PROGRESS TOWARDS ACCOMPLISHING ORIGINAL COMMUNITY SERVICE OBJECTIVES

(Fill in All Blank Columns or Those with Question Marks. Use the Attached Blank Form to Enter New Objectives.)

State	OP Site	Obj No.	PCM Code	Obj/Impact Statement	Year's QTY Target	QTY Unit of Measure	To date Quantity	Year's Success Target	Success Unit of Measure	To date Success
OR	P41A	1	R071	Update/upgrade tribal sewer system	1	sewer system updated	0	3000	# of tribal members who benefit	0 ✓
OR	P41A	2	R026	Assistance provided in obtaining repairs for home health and safety standards	7	homes repaired	0	10	# of applications received because of Member's outreach	0 ✓
OR	P41B	1	R026	Assistance provided in obtaining repairs for home health and safety hazards	5	homes repaired	5	7	# of applications received because of Member's outreach	11
OR	P41B	2	R041	Revolving loan fund outreach	6	loans made	0	30	# of new jobs created or saved	0

QUESTION 13. PROGRESS TOWARDS ACCOMPLISHING ORIGINAL COMMUNITY SERVICE OBJECTIVES
 (Fill in All Blank Columns or Those with Question Marks. Use the Attached Blank Form to Enter New Objectives.)

DP Site	Obj No.	PGM Code	Obj/Impact Statement	Year's	Unit of Measure	To date	Year's	Success Unit of Measure	To date
				QTY Target		Quantity	Success Target		Success
P41A	1	R071	Update/upgrade tribal sewer system	1	sewer system updated	0	3000	# of tribal members who benefit	0
P41A	2	R026	Assistance provided in obtaining repairs for home health and safety standards	7	homes repaired	0	10	# of applications received because of Member's outreach	0
P41B	1	R026	Assistance provided in obtaining repairs for home health and safety hazards	5	homes repaired	5	7	# of applications received because of Member's outreach	11
P41B	2	R041	Revolving loan fund outreach	6	loans made	0	30	# of new jobs created or saved	0

PROGRESS TOWARDS ACCOMPLISHING ADDITIONAL COMMUNITY SERVICE OBJECTIVES

Use this section to report progress towards completing additional new objectives --- those objectives in addition to the main objectives of each project listed on the proceeding page. Please fill in all columns for all objectives. It is important to make sure that each objective is listed with its own "Op Site" (Operating site) code; this ensures that we know precisely what service is performed at each site. Please fill in all columns for each objective. Under "Obj No.," please give each new objective a number different from the number used for any of the objectives on the proceeding page. Under "PGM Code", please use a one-letter and three-digit code to describe the service from the code list provided at the end of this report. Under "Obj/Impact statement," provide a several-word summary of the nature of the service project -- this verbal summary should roughly match the "PGM Code" listed in the previous column. Under "Year's QTY Target," provide a hard number for the people or things aided. Under "Target Unit of Measurement," specify what unit of measure was used in the previous column -- such as miles, number of people served, acres, etc. Under "1st QTR Quantity," provide a hard number indicating progress towards the "Year's QTY Target" that was accomplished during this reporting period. Under "Year's Success Target," provide a hard number for a way of measuring how well the service was provided. Under "Successes Unit of Measure," specify exactly what the number in the previous column meant. Under "1st QTR Success," provide a hard number indicating progress towards the "Year's Success Target" that was accomplished during this reporting period.

State	Op Site	Obj No.	PGM Code	Obj/Impact statement	Year's QTY Target	QTY Unit of Measure	1st QTR Quantity	Year's Success Target	Success Unit of Measure	1st QTR Success
{SAMPLE:}										
CA	Y05A	18	EN96	Constructing whale nesting boxes	3	Boxes	1	90	% meeting stand.	95%
OR	P41A	3	ED10	Tribal Cemetery Inventory	1	Site	0	100	% inventory completed	30
OR	P41A	4	ED11	Pow-Wow Grounds Study	1	Site	0	100	% study completed	25
OR	P41A	5	RO45 RO95	Computer Training	6	People	6	100	% training completed	35
OR	P41A	6	RO06	Mitigation-Wetland Transfers	2	Sites	0	100	% process completed	30
OR	P41B	3	RO05	Outreach-Rural Invest. Fund	5	apps. for funds	0	30	% of funds spent in Lane County Sprjects	0



UNITED STATES DEPARTMENT OF AGRICULTURE

AmeriCorps *USA

USDA State Progress Report (CNS Grant No. 95ADFD047)

1. Check this reporting period: First (10/1 - 12/31) Second (1/1 - 3/31) Third (4/1 - 6/30) Fourth (7/1 - 9/30)

SECTION I - STATE INFORMATION

2. State: Oregon

3. Agency: ARS NRCS Forest Service RECD FSA FCS

SECTION II - STATE CONTACT INFORMATION: (Make Corrections if Necessary)

4. Contact Name: _____

Bud Fischer
RECD State Office
101 S.W. Main, Suite 1410
Portland OR 97204

ast

5. Title: _____

6. Address: _____

street, number, and PO (if applicable)

City

State

Zip

Telephone number: 5 0 3 - 4 1 4 - 3 3 6 6

8. Fax number: 5 0 3 - 4 1 4 - 3 3 9 7

9. E-Mail Address (if any): a32orrdc

2/05/96

10. MEMBER A:

DP SITE ID: P41A

Site Supervisor: Richard Anderson

PHONE: 503-472-1461

Agency/Org Name: RECD/RHCDS

FAX: 5034656347

STATE: OR

City: McMinnville, OR

No. of Members Allocated by USDA: 1

Member Name	SSN	SER STAT	PGM STAT	TRT STAT	HOURS				Total
					1st Rpt	2nd Rpt	3rd Rpt	4th Rpt	
HOAR, STEPHEN T.	(b)(6)	F	A	A	187.5				

No. of Members Allocated by USDA: 1

No. of Active Members Whose Enrollment Forms were recieved at USDA (not including terminations): 1

No. of Members for Whom Forms Have NOT Been Recieved*: 0

ENTER the number of vacancies that you intend to fill in the next reporting period: 0

ENTER the number of vacancies you intend to relinquish for the program year: 0

* If the number of Members allocated is greater than the number of forms received, there are four options: 1. There are Members enrolled in programs whose forms have not been submitted to the USDA Director of National Service. If that is the case, list the names, SSN, Status and hours of the missing members on the back of this sheet and send the enrollment forms to the USDA Director of National Service. 2. The enrollment forms were sent directly to the Corporation. If that is the case, send copies to the USDA Director of National Service immediately. 3. There are vacancies in your program you intend to fill in the next reporting period. If that is the case, enter the number of vacancies on the appropriate line. 4. There are vacancies that you can not fill and you are relinquishing them.

REMEMBER, MEMBERS WHOSE FORMS HAVE NOT BEEN RECEIVED AT USDA ARE NOT CONSIDERED ENROLLED IN THE PROGRAM AND THEIR BENEFITS (EDUCATION AWARD, ETC.) ARE JEOPARDIZED!!!

If the number of members for whom forms have been received is greater than the number of members allocated resulting in a negative number appearing in the "No. of Members for Whom Forms Have NOT Been Recieved" line, you have enrolled more members in your program than authorized. Please explain this over enrollment. It may be that some members have terminated, in which case, change their status on this form and submit the proper end of term of service form to the USDA Director of National Service

5/96

10. MEMBER DATA:

ITE ID: P41A

Site Supervisor: Richard Anderson

PHONE: 503-472-1461

Agency/Org Name: RECD/RHCDS

FAX: 5034656347

STATE: OR

City: McMinnville, OR

of Members Allocated by USDA: 1

Member Name	SSN	SER STAT	PGM STAT	TRT STAT	HOURS				Total
					1st Rpt	2nd Rpt	3rd Rpt	4th Rpt	
R STEPHEN	T. (b)(6)	F	A	A	187.5				

No. of Members Allocated by USDA: 1

of Active Members Whose Enrollment Forms were recieved at USDA (not including terminations): 1

No. of Members for Whom Forms Have NOT Been Recieved*: 0

ENTER the number of vacancies that you intend to fill in the next reporting period: 0

ENTER the number of vacancies you intend to relinquish for the program year: 0

If the number of Members allocated is greater than the number of forms received, there are four options: 1. There are Members enrolled in programs whose forms have not been submitted to the USDA Director of National Service. If that is the case, list the names, SSN, Status and hours of the missing members on the back of this sheet and send the enrollment forms to the USDA Director of National Service. 2. The enrollment forms were sent directly to the Corporation. If that is the case, send copies to the USDA Director of National Service immediately. 3. There are vacancies in your program you intend to fill in the next reporting period. If that is the case, enter the number of vacancies on the appropriate line. 4. There are vacancies that you can not fill and you are relinquishing them.

MEMBERS WHOSE FORMS HAVE NOT BEEN RECEIVED AT USDA ARE NOT CONSIDERED ENROLLED IN THE PROGRAM AND THEIR BENEFITS (EDUCATION AWARD, ETC.) ARE JEOPARDIZED!!!

If the number of members for whom forms have been received is greater than the number of members allocated resulting in a negative number appearing in the "No. of Members for Whom Forms Have NOT Been Received" line, you have enrolled more members in your program than authorized. Please explain this over enrollment. It may be that some members have terminated. In which case, change their status on this form and submit the proper end of term of service form to the USDA Director of National Service.

03-06-96 06:03PM

204

2/05/96

10. MEMBER A:

OP SITE ID: P41B

Site Supervisor: Holliday Loretta

PHONE: 541-465-6443

STATE: OR

Agency/Org Name: RECD/RHCDS

FAX: 5414656483

City: Eugene, OR

No. of Members Allocated by USDA: 1

Member Name	SSN	SER STAT	PGM STAT	TRT STAT	HOURS				Total
					1st Rpt	2nd Rpt	3rd Rpt	4th Rpt	
HANNIBAL, DARC	L. (b)(6)	F	A	A	236				

No. of Members Allocated by USDA: 1

No. of Active Members Whose Enrollment Forms were recieved at USDA (not including terminations): 1

No. of Members for Whom Forms Have NOT Been Recieved: 0

ENTER the number of vacancies that you intend to fill in the next reporting period: 1

ENTER the number of vacancies you intend to relinquish for the program year: 0

* If the number of Members allocated is greater than the number of forms received, there are four options: 1. There are Members enrolled in programs whose forms have not been submitted to the USDA Director of National Service. If that is the case, list the names, SSN, Status and hours of the missing members on the back of this sheet and send the enrollment forms to the USDA Director of National Service. 2. The enrollment forms were sent directly to the Corporation. If that is the case, send copies to the USDA Director of National Service immediately. 3. There are vacancies in your program you intend to fill in the next reporting period. If that is the case, enter the number of vacancies on the appropriate line. 4. There are vacancies that you can not fill and you are relinquishing them.

REMEMBER, MEMBERS WHOSE FORMS HAVE NOT BEEN RECEIVED AT USDA ARE NOT CONSIDERED ENROLLED IN THE PROGRAM AND THEIR BENEFITS (EDUCATION AWARD, ETC.) ARE JEOPARDIZED!!!

If the number of members for whom forms have been received is greater than the number of members allocated resulting in a negative number appearing in the "No. of Members for Whom Forms have NOT Been Received" line, you have enrolled more members in your program than authorized. Please explain this over enrollment. It may be that some members have terminated. In which case, change their status on this form and submit the proper end of term of service form to the USDA Director of National S

6/96

10. MEMBER A:

SITE ID: P41B

Site Supervisor: Holliday Loretta

PHONE: 541 -465-6443

Agency/Org Name: RECD/RHCDS

FAX: 5414656483

STATE: OR

City: Eugene, OR

of Members Allocated by USDA: 1

Member Name	SSN	SER STAT	PGM STAT	TRT STAT	HOURS				Total
					1st Rpt	2nd Rpt	3rd Rpt	4th Rpt	
HIBAL, DARC	L. (b)(6)	F	A	A	236				

No. of Members Allocated by USDA: 1

of Active Members Whose Enrollment Forms were recieved at USDA (not including terminations): 1

No. of Members for Whom Forms Have NOT Been Recieved*: 0

ENTER the number of vacancies that you intend to fill in the next reporting period.

ENTER the number of vacancies you intend to relinquish for the program year:

If number of Members allocated is greater than the number of forms received, there are four options: 1. There are Members enrolled in programs whose forms have not been submitted to the USDA Director of National Service. If that is the case, list the names, SSN, Status and hours of the missing members on the back of this sheet and the enrollment forms to the USDA Director of National Service. 2. The enrollment forms were sent directly to the Corporation. If that is the case, submit copies to the USDA Director of National Service immediately. 3. There are vacancies in your program you intend to fill in the next reporting period. If that is the case, enter the number of vacancies on the appropriate line. 4. There are vacancies that you can not fill and you are relinquishing them.

~~MEMBERS WHOSE FORMS HAVE NOT BEEN RECEIVED AT USDA ARE NOT CONSIDERED ENROLLED IN THE PROGRAM AND THEIR BENEFITS (EDUCATION AWARD, ETC.) ARE JEOPARDIZED!!!~~

If number of members for whom forms have been received is greater than the number of members allocated resulting in a negative number appearing in the "No. of Members for Whom Forms Have NOT Been Received" line, you have enrolled more members in your program than authorized. Please explain this over enrollment. It may be that some members have terminated. In which case, change their status on this form and submit the proper end of term of service form to the USDA Director of National Service.

03-04-96 08:00 AM

10 134

Please list the total number of volunteers who took part in activities which were sponsored or organized by all the Members in the state during this period.

1st Qtr.	2nd Qtr.	3rd Qtr.	4th Qtr.	Total
0				

12. Please list the total number of hours of community service completed by the volunteers cited above during this period. (In question 18, briefly explain what these volunteers accomplished)

1st Qtr.	2nd Qtr.	3rd Qtr.	4th Qtr.	Total
0				

SECTION IV - PROGRESS TOWARDS ACCOMPLISHING SERVICE OBJECTIVES:

13. **Original Community Service Objectives:** Attached are sheets summarizing the community service objectives that were originally approved for each operating site. In cases where a single objective may take an entire year to complete, that objective may have a sub-objective listed. You need to fill in the column marked "1st QTR Quantity" and the column marked "1st QTR Success" --- as well as any column that is blank, has a zero, or has a question mark --- for EVERY operating site. Each chart should have the following columns:

"State" - The standard two-letter code for your state

"Obj No" - Each community service objective for each site is assigned an individual number

"Op Site" - Each site's unique operating site identification

"PGM Code" - Each type of service has been assigned a unique code to describe that type of service. See the appendix to this report entitled "Community Service PGM Code List"

"Obj/Impact Statement" - A few words verbally summarizing the community service objective

"Year's QTY Target" - The year's numerical goal for the people or things to be aided

"Target Unit of Measurement" - The unit of measure used in the previous column

"1st QTR Quantity" - Provide a hard number indicating progress towards the "Year's QTY Target"

"Year's Success Target" - Number for a way of measuring *quality* of service provided --- If this column is blank, has a question mark, or has a zero, please replace it with the accurate information

"Success Unit of Measure" - Explanation of the number in the previous column --- If this column is blank, has a question mark, or has a zero, please replace it with the accurate information

"1st QTR Success" - Provide a hard number indicating progress towards the "Year's Success Target"

QUESTION 13. PROGRESS TOWARDS ACCOMPLISHING ORIGINAL COMMUNITY SERVICE OBJECTIVES
 (Fill in All Blank Columns or Those with Question Marks. Use the Attached Blank Form to Enter New Objectives.)

State	OP Site	Obj No.	PGM Code	Obj/Impact Statement	Year's QTY Target	QTY Unit of Measure	To date Quantity	Year's Success Target	Success Unit of Measure	To date Success
OR	P41A	1	R071	Update/upgrade tribal sewer system	1	sewer system updated	0	3000	# of tribal members who benefit	0
OR	P41A	2	R026	Assistance provided in obtaining repairs for home health and safety standards	7	homes repaired	0	10	# of applications received because of Member's outreach	0
OR	P41B	1	R026	Assistance provided in obtaining repairs for home health and safety hazards	5	homes repaired	2	7	# of applications received because of Member's outreach	
OR	P41B	2	R041	Revolving loan fund outreach	6	loans made	3	30	# of new jobs created or saved	

QUESTION 13. PROGRESS TOWARDS ACCOMPLISHING ORIGINAL COMMUNITY SERVICE OBJECTIVES
 (Fill in All Blank Columns or Those with Question Marks. Use the Attached Blank Form to Enter New Objectives.)

P Site	Obj No.	PGM Code	Obj/Impact Statement	Year's		To date	Year's		To date
				QTY Target	QTY Unit of Measure		Success Target	Success Unit of Measure	
11A	1	R071	Update/upgrade tribal sewer system	1	sewer system updated	0	3000	# of tribal members who benefit	0
11A	2	R026	Assistance provided in obtaining repairs for home health and safety standards	7	homes repaired	0	10	# of applications received because of Member's outreach	0
11B	1	R026	Assistance provided in obtaining repairs for home health and safety hazards	5	homes repaired	2	7	# of applications received because of Member's outreach	
11B	2	R041	Revolving loan fund outreach	6	loans made	3	30	# of new jobs or saved	

14. PROGRESS TOWARDS ACCOMPLISHING ADDITIONAL COMMUNITY SERVICE OBJECTIVES

Use this section to report progress towards completing additional new objectives --- those objectives in addition to the main objectives of each project listed on the preceding page. Please fill in all columns for all objectives. It is important to make sure that each objective is listed with its own "OP site" (Operating site) code; this ensures that we know precisely what service is performed at each site. Please fill in all columns for each objective. Under "Obj No.," please give each new objective a number different from the number used for any of the objectives on the preceding page. Under "PGM Code", please use a one-letter and three-digit code to describe the service from the code list provided at the end of this report. Under "Obj/Impact statement," provide a several-word summary of the nature of the service project -- this verbal summary should roughly match the "PGM Code" listed in the previous column. Under "Year's QTY Target," provide a hard number for the people or things aided. Under "Target Unit of Measurement," specify what unit of measure was used in the previous column -- such as miles, number of people served, acres, etc. Under "1st QTR Quantity," provide a hard number indicating progress towards the "Year's QTY Target" that was accomplished during this reporting period. Under "Year's Success Target," provide a hard number for a way of measuring how well the service was provided. Under "Successes Unit of Measure," specify exactly what the number in the previous column meant. Under "1st QTR Success," provide a hard number indicating progress towards the "Year's Success Target" that was accomplished during this reporting period.

State/Op Site	Obj No.	PGM Code	Obj/Impact statement	Year's QTY Target	Unit of Measure	1st QTR Quantity	Year's Success Target	Success Unit of Measure	1st QTR Success
[SAMPLES]									
CA 000A	18	FN96	Constructing whale nesting boxes	3	Boxes	1	90	% meeting staid	95%
OR 000B	19	DR01	Quasitory Inventory	1	Site	0	100	% inventory completed	25%
OR 000A	20	DR01	How Waa Grounds Study	1	Site	0	100	% study completed	20%
OR 000A	21	DR01	Wildlife Training	6	People	6	100	% training completed	20%
OR 000A	22	DR01	Phase 1 wet land Transfers	2	Sites	2	100	% process completed	20%
OR 000A	23	DR01	Phase 2 wet land Transfers	5	acres for funds	0	75	% of funds spent in Lane County Sprojects	0%

03-06-96 05:03PM

- 15. Community Service Objectives Narrative (optional):** If you are a member of a community service organization and/or helpful, you may use this space to describe in more detail the community service objectives reported in question 13 and the community service objectives reported in question 14. Please make sure you list the specific accomplishments of each narrative description so we can be clear which accomplishments

SEE ATTACHMENT A.

- 16. Community Building Objectives Narrative (optional):** Briefly describe how projects have brought together diverse groups of people, empowered communities to solve their own problems, and created structures that will last beyond each AmeriCorps Member's term of service, and how the abilities of local citizens to help improve the community.

Op. Site P41A: The Member has been working with a local community development organization for developing 20 new homes in the tribal community and through the use of local citizens.

Op. Site P41B: Because of the Member's work on the Rural Action Plan, projects have been completed in deciding how funds set aside by the Oregon Legislature should be spent in their area and, during term of service, at least one economic development project affecting rural Lane County was completed and improved the lives of local citizens. Further, because of the outreach that Member has done through the Home Repair Program and the Rural Business Development Fund, health and safety has been improved in the home of eligible applicants and jobs have been created or saved in the expansion of rural businesses.

- 17. AmeriCorps Member Development Objectives Narrative (optional):** Briefly describe how AmeriCorps Members themselves have benefited from serving in the program, particularly in terms of expanding their own educational opportunity and increasing their own ethics of personal responsibility. Describe specific skills learned by Members through either their service or training. Describe how Members that earned a GED or otherwise completed their education. Describe how Members received assistance to join AmeriCorps. Relate how Members completed their education, including how they were able to attend school. Describe how Members may have changed their ethics of work, including how they have changed their volunteerism.

Op. Site P41A: The growth in the Grand Staircase-Escalante National Monument has led to an increase in the occurrence. The exposure to tribal government has given the Member a new perspective on the planning, public works, and many other areas of interest.

Op. Site P41B: Through the second year with AmeriCorps, the Member has learned more about working with the public, working with a public agency, and how to use the educational award provided by AmeriCorps. Through the Member's service, she has earned the educational award provided by AmeriCorps. Through the Member's service, she has earned the educational award provided by AmeriCorps. Through the Member's service, she might not have been able to attend school when she finishes her term of service.

SECTION V - SUCCESS STORIES:

- 18. Unique Successes or Great Stories:** Please report on any exceptional success stories, a program highlight, or a 'great story' that illustrates an instance in which AmeriCorps Members recruited non-traditional students to the program. Please include a brief description of the project. Please include a copy of any newspaper coverage, including original newspaper clippings, radio coverage; any letters of support from community organizations; photographs, brochures, posters, and newsletters created by the program or its members as documentation.

Op. Site P41A: The class of '96 from Newby, Oregon has a very good record. They are and, just as other students throughout the state, are seeking alternative work opportunities in education. My son is a part of this class. I know that I am not alone in this. On a number of occasions, I have talked with other parents of AmeriCorps members in the college tuition, but I take it as a challenge to the less fortunate or lower income areas to follow-up on the opportunity. However, whether or not AmeriCorps is kept alive, I believe that the lessons learned from the program will be very interesting to the general public. I believe that Congress has a responsibility to ensure that the program is kept alive.

Op. Site P41B: None to report in this category.

SECTION VI - CHALLENGES

- 19. Difficulties Faced by the Program:** Please report on any problem or difficulty encountered in the program this period. These should be significant issues that impede achieving objectives, significant delays in implementation, administrative problems, unmet expectations, events or incidents that have caused the Members to leave the program, or how the issue has, or has not been resolved. Be sure to outline the steps taken and the steps needed to assist in resolving the problem.

Op. Site P41A: While \$4725 was paid to me for my loan through Sallie Mae last year was not paid and I am still waiting for the money. I have not get a printout from Sallie Mae indicating the amount of the loan. I have not received the money by September 30, 1995 but they still have not paid me.

Op. Site P41B: At this time the amount of the loan is \$55,347 and 26 people have not received the funding for the Section 504 Home Repair program. The amount of the loan for the program will not be able to reach the amount of the loan.

Op. Site P41B: The Corporation For National Service has not paid the loans through Sallie Mae and Perkins. I have not received the money. I have not request for the Corporation For National Service to pay the money. (For more details.)

SECTION

20. National Identity Activities (OPT)
fostered the national identity of AmeriCorps projects, national sites, etc.

Op. Site P41A: While serving under AmeriCorps he is working with to explain the program. AmeriCorps Member assigned to them. The Service.

Op. Site P41B: None to report for this

21. Organizational Changes: Please describe any changes in organizational structure during the quarter.

Op. Site P41A: None.

Op. Site P41B: Loretta Holliday has been removed as supervisor. Rosanne Volker-Bronson, the supervisor, has been transferred to another office. This has left the office short staffed and slowing the process.

22. Organizational Improvements (OPT)
managers, or anyone else regarding organizational improvements.

Op. Site P41A: None.

Op. Site P41B: SEE ATTACHMENT B.

23. Primary Training and Technical
of staff or Member training or technical training in National Service, or other service.

Op. Site P41A: Training in dealing with tribal governments.

Op. Site P41B: All of my training has been

15. Community Service Objectives

Op. Site: P41A

Obj. No.: 1&2

The Member spent most of the year on the water supply system. The community development is to take place in the form of additional 400 homes in the area. The Member will be conducting

Op. Site: P41A

Obj. No.: 3

The Member is conducting a project to control erosion and preserve the land for tribal members.

Op. Site: P41A

Obj. No.: 4

The Member is conducting a project to control drainage from this area from the

Op. Site: P41B

Obj. No.: 3

The Oregon Legislature recently passed a bill to finance economic and community development in rural areas. About \$982,000 has been allocated to Lane, Lincoln, and Linn Counties. The Region solicits input and participation from citizens. The money should be spent on projects that will improve the quality of life in the region. An Action Plan detailing the projects was developed on 31, 1996. Requests for proposals were issued by Lincoln-Linn Regional Economic Development. The Member has been successful in obtaining participation from groups of citizens and has provided citizens with information about the projects. Proposals, and assist in the development of the government, one Community Development Project with the Member's assistance.

21. Organization

This year, the Commission's
forbearance request process
they finally received
find out whether or not
the person I talked to
was very rude and I
filled out a new request
through the state
phone calls from my
not take that long. There
for processing such requests
should receive some
a professional environment