

FOIA MARKER

This is not a textual record. This is used as an administrative marker by the William J. Clinton Presidential Library Staff.

Collection/Record Group: Clinton Presidential Records

Subgroup/Office of Origin: National Service

Series/Staff Member: Jim Kreidler

Subseries:

OA/ID Number: 1283

FolderID:

Folder Title:

[Funding Request - The West Philadelphia Partnership] [loose]

Stack:

S

Row:

66

Section:

2

Shelf:

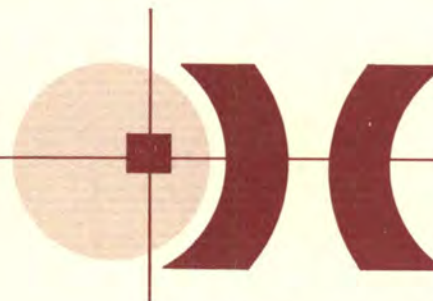
4

Position:

3

THE WEST PHILADELPHIA PARTNERSHIP

A consortium of educational/health care/scientific institutions, community organizations, residents and companies which seeks to revitalize residential and economic life in West Philadelphia.



April 19, 1993

Mr. Eli Segal
Executive Director
Office of National Service
Room 145 OEOB
Washington, DC 20500

Dear Mr. Segal:

I am writing to express the interest of the West Philadelphia Partnership (the Partnership) in becoming a National Youth Service Program work site. The Partnership is a non-profit [501(C)(3)] community organization dedicated to the educational, economic and residential revitalization of the West Philadelphia community. The interns would be drawn from Drexel University, the University of Pennsylvania, Temple University or any other participating institution in the Philadelphia metropolitan area.

The Partnership has several programs that warrant Service Corps participation. One of the West Philadelphia Partnership's most successful programs is the West Philadelphia Improvement Corps (WEPIC). This program is a nationally recognized school/community revitalization project which offers educational and community service opportunities for the entire community. WEPIC is now based in nine public schools in West Philadelphia. In addition to operating a very successful summer jobs program for over 236 youth, WEPIC's two community school programs provide a variety of free classes to over 3000 local residents of all ages.

Other Partnership programs include: the Job Network and Referral Center (JNARC) which is designed to facilitate the employment and training of residents through coordination with employers, training providers, and community based organizations; the West Philadelphia Community Development Corporation (WPPCDC), which addresses the dual issues of housing and economic development; the Partnership's Resource and Information Center, which aids smaller community groups with grant writing and technical assistance; the Partnership's Task Force on Safety and Security, which seeks to make West Philadelphia a safer place to live; and various other special projects such as the West Philadelphia Bike Race.

The Partnership is requesting funding and/or assistance for three student participants. (Please see the attached job description for sample duties and responsibilities).

Job Description

Title: National Service Interns (3)

Reports To: 1-Executive Director, West Philadelphia Partnership
2-Director of Operations, West Philadelphia Improvement Corps (WEPIC)
3-Executive Director, West Philadelphia Partnership Community Development Corporation(WPPCDC)

Responsibilities:

1. Attend community meetings to assess needs of West Philadelphia community.
2. Plan develop and coordinate special projects for the Partnership.
3. Develop a plan of action to implement the "Buy West Philadelphia" campaign. The Buy West Philadelphia campaign is designed to encourage major local institutions to make purchases from smaller local vendors in the community. Over \$10 million dollars in goods and services have been purchased to date. Coordination is needed.
4. Provide staff support for the West Philadelphia Job Network and Referral Center (JNARC).
5. Assist in the office automation of the West Philadelphia Partnership.
6. Compile list of redevelopment opportunities targeted for community residential and commercial ownership, exploring feasibility, and presenting to appropriate Board/Committee for approval.(WPPCDC)
7. Prepare proposals for submission to government entities, private foundations and corporations.
8. Handle details of WEPIC community school including, registration, weekly attendance, and teacher participation.
9. Develop a system of tracking fundraising activities.
10. Staff Partnership's Resource and Information Center. Catalogue information as it becomes available.
11. Monitor and evaluate public policy as it relates to community development.
12. Perform duties and coordinate projects as needed.

PHOTOCOPY
PRESERVATION



THE WEST PHILADELPHIA
PARTNERSHIP

PHOTOCOPY
PRESERVATION



**THE WEST PHILADELPHIA
PARTNERSHIP**

3901 Market Street, Box 1948
Philadelphia, PA 19104
386-5757

PHOTOCOPY
PRESERVATION

WEST·PHILADELPHIA

*the future
is here*

PARTNERSHIP NEWS

3901 Market Street, Box 1948 Philadelphia, PA 19104 386-5757

SUMMER 1992

A consortium of individuals, community groups, businesses, educational, scientific and health care institutions seeking to revitalize educational, residential and economic life in West Philadelphia

Partnership Convenes Task Force on Safety and Security

For perhaps the first time, safety and security experts from throughout the West Philadelphia community have come together in a broad-based consortium with the goal to reduce crime and help make the West Philadelphia community a pleasant and secure environment in which to live and work. Convened by the West Philadelphia Partnership, this group representing institutions, community organizations, businesses, agencies, and residents, is guided by the mission to:

- 1) Coordinate and complement existing safety and security efforts of the various institutions, community organizations, businesses, agencies, and residents in order to:
 - a. enhance communication and improve information sharing
 - b. maximize resources
 - c. minimize duplication of efforts.
- 2) Develop and implement initiatives and activities in order to:
 - a. promote education and public safety awareness
 - b. work collectively to raise funds to help meet community needs for safety and security.

This Task Force meets monthly and its first undertaking has been to improve the communication network in the area. To this end, Task Force members, namely, the Insititute of Pennsylvania Hospital, the University of Pennsylvania, and the Philadelphia College of Pharmacy and Science, will set-up 24 hour base stations which will provide an important link between organized Town Watch groups and the police.

This network is an expansion of an existing model between Presbyterian Hospital and the West Philadelphia Coalition of Neighborhoods and Businesses who already operate a one radio frequency system. Individuals in the community armed with walkie-talkies, will communicate with monitored security personnel at the base stations who will quickly relay information to the police. The West Philadelphia Partnership along with several institutional members of the Task Force will purchase additional walkie-talkies and distribute them to the Town Watch groups. **Interested Town Watch groups should register with their local police district to participate in the program.**

In addition to this communications network, the Task Force is working on a safety and security directory and has already targeted other security concerns in West Philadelphia such as the reduction of car theft and vandalism in conjunction with the police districts.

Partnership Wins Grant to Begin Social Health Program at Turner

The West Philadelphia Partnership is the recent recipient of a \$109,000 grant awarded by the PEW Charitable Trusts. The funds will aid in the creation of a social health program through outreach, education, and school based support services, at the John P. Turner Middle School. The program, set to kick off this September, will give individual students and their families support through counseling, peer education, life skills training and other needed services. The program will be staffed by an experienced social worker along with three graduate interns who will provide assistance as needed.

This unique program will involve home-visits by the social worker if necessary. In addition, after-school workshops will be held for students, teachers, and the community to discuss relevant yet complex topics now confronting our youth which will include, but not be limited to, academic enhancement, homework assistance, cultural enrichment, social skills training, peer pressure, and healthy living practices.

This two-year social health program could become a replicable model in other schools based on the complex needs of students, teachers, and families in our struggling communities.

Message From The Executive Director

The West Philadelphia Partnership is on the move! I look back on this year, which has been challenging in many respects, with a sense of accomplishment. During this somewhat transitional period, changes were made in the overall operation of the Partnership's administrative office. In addition, the Partnership undertook a new safety and security initiative; expanded and improved its WEPIC program with its very successful community school programs; co-sponsored the West



Continued on page 3

Community Schools: A Huge Success!!!



Drivers Education, Self Improvement, GED Preparation, Aerobics, Computers, Creative Arts, African American History, Math, Vegetarian Cooking, Home Improvement and College Access were just some of the classes offered at WEPIC's Community Schools during the Spring of 1992. The free classes were held at both Turner Middle and West Philadelphia High Schools on Wednesday evenings and Saturday Mornings. Many classroom instructors were residents and/or activists in the community.

At the John P. Turner Middle School, the classes revolved around the area of healthcare, health-sciences, and healthy living practices. Over 300 youth and adults participated in the classes offered.

There was overwhelming response at West Philadelphia High thanks partly to WDAS-AM and FM who graciously allowed WEPIC coordinator Mr. John Skief to make on-air presentations to the community. Over 1000 people registered, and at least 700 attended classes. In addition, several special events were held including "Showtime at West", "African Explorers Before Columbus", and "The Journey" theater presentation.

THE COMMUNITY SCHOOL WILL RETURN
THIS FALL — LOOK FOR ANNOUNCEMENTS
IN YOUR LOCAL NEWSPAPERS!!!

Partnership Staff

Rae Scott Jones, Executive Director
Blane F. Stoddart, Associate Director, Community Dev.
Michael P. Connelly, Director of Operations, WEPIC
Kimberly Bethea, Fiscal Manager
Jermaine Brown, Administrative Assistant
Gwendolyn Brooks, Office Manager/Receptionist

Part Time Staff:

Sara Lindenberg, WEPIC Summer Coordinator
Ann M. Kreidle, WEPIC Technical Coordinator
Jeanette Stalker, Urban League Senior
Theophilus Woodson, Urban League Seniors

Biking is Back!!!

On your mark! Get set! and off they go down Cobbs Creek Parkway to Washington Ave. and back up the Parkway to the Cobbs Creek Skatehouse in the first West Philadelphia Neighbors Bike Race!

Co-sponsored by the West Philadelphia Partnership, the Philadelphia Refugee Service Center, the West Philadelphia Chamber of Commerce, and the Philadelphia Anti-Graffiti Network, this biking event was held on Saturday, May 30, 1992 and involved residents from throughout the West Philadelphia area. Individuals ranging in age from eight (8) up to and including a few seniors competed against each other in the 2.1 mile race down the Cobbs Creek Parkway. Cash prizes and other items were awarded to the first, second, and third place winners in each age category.

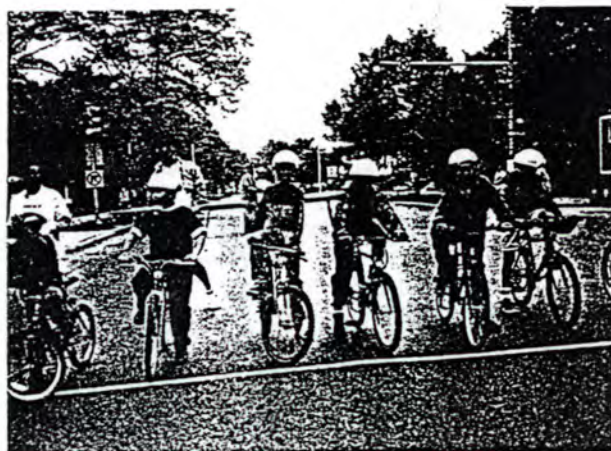
Despite the rain, a number of people came out to cheer the bikers on and to participate in the excitement of the day. WDAS Radio Station provided the music and Coca Cola provided free beverages to all. In addition, food and other items were available from a number of other vendors.

Thanks goes out to everyone, especially the police officers of the 18th Police District, who helped to make this a safe and successful event. For those who missed this year's race, get on your bikes and get ready to join us next May for the second annual West Philadelphia Neighbors Bike Race!

*The following individuals or organizations deserve a special thanks for contributing to this effort:

Corestates
Care and Emergency, Inc.
Coca Cola
Misericordia Hospital
Kinko's Printing Service
Scott Steketee
University City Review
Friends of Cobbs Creek Skatehouse
18th Police District
WDAS Radio Station
Wolff Bicycle Shop

and numerous other contributors and volunteers.



LA Relief Effort

The West Philadelphia Partnership supported Drexel University in their Los Angeles Relief Effort. This drive, spearheaded by Ronnie Manlin, Special Projects Coordinator of the Division of Student Life at Drexel, involved collecting food, clothing, and other personal items for the victims of the crisis in Los Angeles.

Ann Guise, board member of the Partnership, coordinated the Partnership's participation in this effort. She collected items from various members of the Partnership as well as from students from West Philadelphia High School, Sam's Place and others in the community to add to the mound that was accumulating outside Drexel's Student Life Building.

On Friday, May 22, 1992, Ms. Guise along with several Partnership staff members, joined Drexel University students, in particular the Inter Fraternity Association, and staff in loading a truck container, donated by Sealand Freight Company, with the items to be shipped by rail to Los Angeles. (Great Bear Spring Water Company donated badly needed cases of bottled water to the effort.)

The Black Clergy of Philadelphia and the American Friends Center joined in this cooperative effort to help those in need in a fellow urban city.

As a follow up to the Los Angeles Relief Effort, students, faculty, and administrators from Drexel University will be meeting during this summer to discuss the implications of the Los Angeles crisis for our West Philadelphia community and to explore real ways in which they can become involved in efforts to avert a similar crisis occurring here.

WEPIC Renovates New Center for Literacy Site

WEPIC students from both the West Philadelphia High School construction course and the adult construction program helped to renovate the ground floor of a building at 1018 S. 48th Street for use as a Center for Literacy (CFL) training facility.

Students were led by a team of union carpenters, headed by Walt McAuley while they installed new walls and lighting in the facility. Project tasks included framing, dry walling, taping, painting and installing electrical fixtures.

The CFL will be announcing in early September the date for the grand opening of the facility. All are invited to come and see the good work WEPIC has done.

Ms. JoAnne Weinberger, Executive Director of the CFL commented on the fantastic job that was performed by the WEPIC work crews. She said that the center has a warm inviting atmosphere for learning and commented that working with WEPIC was a rewarding Partnership.

The center has a variety of programs such as: individual volunteer tutors, intensified literacy skills training, and remedial education workshops. The 48th Street location is serving as a major literacy site in West Philadelphia. Ms. Weinberger thanks the Partnership immensely.

Message From the Executive Director

Continued from Page 1

Philadelphia Neighbors Bike Race; participated in Drexel University's LA Relief Effort; participated in several fairs; and

hosted numerous site visits and visitors including Tom Foley, Secretary of the Pennsylvania State Department of Labor and Industry.

Perhaps most significantly, however, was the adoption of the Statement of Goals and Objectives by the Board of Directors. These Goals and Objectives chart the course for the Partnership's future and provide a foundation upon which to build. They include the goals of building partnerships; improving education; increasing public safety and security; promoting health; stimulating economic development; and advancing cultural understanding.

The primary goal, as determined by the Board, however, is one of building partnerships. This goal sets the framework for achievement of all other objectives. It is clear that the seriousness and complexity of the challenges facing us require the involvement of the entire community. Recognizing this, the Board reaffirmed that the Partnership will work in collaboration with other individuals and groups on various issues and projects.

As a first step in this direction, copies of the Statement of Goals and Objectives have been distributed to community leaders throughout West Philadelphia inviting comment. (Copies may be obtained by calling the Partnership office.) These comments are important guideposts in helping to shape the role of the Partnership as we move into the future.

I believe that the West Philadelphia community has many strengths and resources and that partnerships are pivotal in maximizing the benefits to everyone. All of us — institutions, neighborhood organizations, businesses, and individuals — can and should work together to enhance the quality of life for the *entire* West Philadelphia community. With a new and energetic staff, a spirit of enthusiasm, and a renewed sense of commitment, the West Philadelphia Partnership is ready to do just that! We look forward with excitement to the coming year and to working with various members of our community on achieving common goals!

Board of Directors

Mr. Peter K. Aborn
Mr. Robert Behr
Mr. Richard I. Bennett
Ms. Catherine Blunt
Ms. Shirley Bonnem
Mr. Elliot Borgman
Mr. Richard D. Breslin
Ms. Lois Bye, Vice Chair
Mr. Stephen Carey, Secretary
Mrs. Frances Clark
Ms. Alice Crowell
Mrs. Ellen B. Davis
Mrs. Frances E. Davis
Mr. Kemel Dawkins
Ms. Wilma DeSoto
Mr. Guy H. Edwards
Ms. Linda Frank
Dr. Barry Grossbach
Ms. Ann Guise
Dr. Sheldon Hackney, Chairman
Ms. Evelyn Hidaigo
Ms. Queen Hinton
Mr. Jon Hoek
Mr. Richard L. Hymanson
Ms. Evelyn James
Mr. Andrew Jenkins
Mr. Alan Klein
Mr. Scott C. Lederman, Treasurer
Mr. Plato A. Marinakos
Mr. I. Maximilian Martin
Mr. Joseph S. Moloznik, Esq.
Ms. Joanne Mowers
Dr. Alice Moyer
Mr. Edmond F. Notebaert
Mr. Louis Padulo
Mr. John Perovich
Ms. Molly Raphael, Vice Chair
Mr. James Reed
Ms. Olivia Rhinehart
Mr. Malcolm T. Riley, Jr.
Dr. Joseph W. Ruane
Ms. Kathryn M. Ruck
Mr. Alex Senderowicz
Mrs. Elizabeth Bressi-Stoppe
Ms. Betty Twyman
Mr. Greg Watts
Mr. David Williams

SUMMER JOBS For Area Youth

July marked the start of WEPIC's 1992 Phil-a-Job program for 236 West Philadelphia youth. The students, ranging in age from 14 to 21, will be working on a variety of projects at area schools and community-based organizations. In keeping with the WEPIC philosophy of using schools and community-based organizations as centers of community revitalization, the students will be beautifying their schools and surrounding grounds, tutoring young children at an area daycare center, being "friendly visitors" to the elderly and sick, restoring a 1920's pipe organ, and performing light construction work! In addition to doing needed "sprucing-up" at schools and assisting at area organizations, the students will also spend some time in the classroom.

Because of an additional \$1 billion in federal funds from recent urban aid legislation, WEPIC was able to expand its summer jobs program, by providing employment for more youth than ever before. These additional youth will be starting on July 20th. They will be helping the MS Society prepare for their annual bike-a-thon, building stage sets for the University City Arts League and organizing sports activities for the Kingsessing Recreation Center. Each individual will receive a wage of about \$100 a week. The program will run until the end of August. We invite you to visit the sites and see the young people's contribution to the community. Here are the sites:

<i>Project Site</i>	<i>Project</i>	<i>Teacher</i>
Kingsessing Recreation	Summer League Assistants	Bernard Shearlds
Lea Middle School	School Beautification	Wayland Wilson
Multiple Sclerosis Society	Bike-a-Thon Preparation	Denise Williams
People's Emergency Center	Landscaping	Charles McLemore
Peake's Day Care	Day Care Assistance	Minetta Metz
Sayre Middle School	School Beautification	Tracee Jones
Shaw Middle School	School Beautification	Clara Gay
Sulzberger Middle School	School Beautification	Ann Merrick
Turner Middle School	School Beautification	Linda Ehrlich
Univ. City Arts League	Stage Building	Frank Kopaczewski
West Phila. H.S.	Organ Restoration	Steve Coleman
	Doves	Paul Verner
West Phila. Economic Development Center	Landscaping, Drywalling	Elaine Flournoy Debbie Smart

Blane F. Stoddart, Editor

West Philadelphia Partnership
3901 Market Street, Box 1948
Philadelphia, PA 19104-3133
215-386-5757



Pictured above are (l. to r.): Rae Scott-Jones, West Philadelphia Partnership, and Rick Joers, vice president, Human Resources and CRA Officer, Provident National Bank.

The West Philadelphia Partnership is one of four community development organizations who will receive a total of \$45,000 over the next three years from Provident National Bank's "Partners in Community Performance" program.

The West Philadelphia Partnership received its first-year grant of \$10,000 during a luncheon on Dec. 18, at Provident headquarters at Broad and Chestnut Sts.

Partners grants are intended to help community organizations meet their basic operating expenses. The grants help reduce the time organizations need to spend on fundraising, and enable them to concentrate on their substantive goals of neighborhood revitalization.

The West Philadelphia Partnership has worked for the residential, educational and economic revitalization of the West Philadelphia community since 1959, when the organization was founded. It has renovated several neighborhood buildings, formed a Job Network and Referral Center and is sponsoring construction training classes at the West Philadelphia High School.

Recently, WPP formed a subsidiary community development corporation to help local community organizations manage housing development projects and revitalization strategies.

"Since 1989, when the Partnership program began, 15 organizations have been able to greatly enhance their communities by developing and rehabilitating low-income housing, revitalizing commercial districts, facilitating small business development and achieving other goals," said Donald C. Kelly, Provident's community reinvestment manager.

"Provident is proud that it has made a commitment to reach these groups. Community Development Corporations play a critical role in reviving deteriorating neighborhoods, and they will probably become even more prominent and numerous as a result of support by the Clinton Administration."

Twenty-seven community organizations competed for the Partners grant this year. Recipients were selected with the assistance of the Delaware Valley Community Reinvestment Fund and the Local Initiatives Support Corporation. Priority was given to smaller organizations poised to grow to a higher level of productivity and to the established organizations for whom the grant would enable a significant growth in capacity.

Community Development Corporations are invited to apply for the Partners in Community Performance grant each fall. Additional information about the Partners program is available from Don Haskin, vice president, Public Affairs, Provident National Bank, (215) 585-6208. Provident National Bank, is an affiliate of PNC Financial Corp. PNC, headquartered in Pittsburgh, is the nation's 13th largest bank holding company, with assets of \$46.6 billion. It operates approximately 550 community banking offices in Pennsylvania, Kentucky, Ohio, Indiana and Delaware and conduct business through additional offices in 16 states.

West Phila. patrols will be tied together on one radio network

Private security forces from hospitals and universities lend an ear to town watches.

By Craig R. McCoy
INQUIRER STAFF WRITER

Realizing that the health of their campuses is linked to the safety of nearby streets, hospitals and academic institutions in West Philadelphia have agreed to serve as 24-hour radio base stations for town watch volunteers.

Their radio dispatchers, already on the job around the clock monitoring their private security forces, will also field calls from town watches and, if necessary, quickly relay messages to Philadelphia police.

The program, which will begin this summer, will mean that town watches across West Philadelphia will be linked through a common, private radio frequency. That means, for instance, they can all learn at once about a car fleeing one neighborhood to the next.

Presbyterian Medical Center at 39th and Market Streets began monitoring the frequency two years ago for a town watch sponsored by the West Philadelphia Coalition of Neighborhoods and Businesses.

Under the plan, the University of Pennsylvania, Philadelphia College of Pharmacy and Science at 43d Street and Kingsessing Avenue, and the Institute of Pennsylvania Hospital at 49th Street and Haverford Avenue have also agreed to serve as base stations for town watches.

Walkie-talkies tuned to the frequency can also be given to police and to other West Philadelphia institutions, even ones not serving as base stations.

"I am hopeful that this initiative is going to be incredibly helpful," said Robert Walker, director of public safety and security for Presbyterian. "We want the crooks to know that there will be people out there monitoring every day and letting the authorities know."

Presbyterian serves as base station for 18 coalition town watch volunteers, who cover West Philadelphia in cars. Under the new effort, that frequency will be opened for use by other town watches and institutions throughout West Philadelphia.

Now, some town watch volunteers must use pay phones or dash into their homes when they want to alert

police. Others, who use citizens band radios to communicate with one another, have to station a volunteer inside a home to operate a base station night after night.

Lee B. Tolbert, president of the West Philadelphia coalition, said he hoped as many as 100 volunteers would be equipped with walkie-talkies tied into the frequency within a year.

John Kuprevich, commissioner of public safety for the University of Pennsylvania, said the goal was both to bolster existing town watches and to encourage others to form.

Rae Scott-Jones, director of the West Philadelphia Partnership, expects to help raise money to purchase more walkie-talkies, which cost about \$500 apiece. Participating institutions are also expected to donate money.

The community leaders involved in the venture have been carefully developing their plans since last fall. That has involved knitting together tireless and proud volunteer town watch groups that are sometimes fiercely independent.

They also realize that radio discipline — clear, succinct communication without chatter — will become critical as more and more people begin using the frequency.

"So far, we've been fortunate," said a member of the West Philadelphia coalition, who asked that his name not be used. The radios "are in the hands of people who are responsible."

The directors of security at the institutions say they realized that their campuses cannot be islands of security. They also realize that institutions need to build bridges to communities.

"We're strong community advocates," said Walker, of Presbyterian Medical Center, whose security force watches over a 16-acre campus. He added, "We have a trash-to-steam plant here. The only way you get these things done is if you have a strong rapport with the community."

David Hochman, president of the Spruce Hill Community Association, which represents neighborhoods near the University of Pennsylvania, was enthusiastic.

"It's very positive. Anything that can be done to coordinate all these different sets of eyes and ears that are on the street is important, because that message communicates itself to the neighborhood, that people are watching out for each other."

Rae Scott-Jones leads a diverse coalition dedicated to improving West Philadelphia

Our goal is to enhance the quality of life in West Philadelphia for everyone who lives and works here," states Rae Scott-Jones, executive director of the West Philadelphia Partnership. Appointed to the post in February, Scott-Jones says she has found her new position a constant challenge, a great learning experience, and a tremendous source of satisfaction.

Scott-Jones earned her law degree from Temple University. For several years, she served as deputy chief solicitor for the City of Philadelphia and worked with its government on child-abuse cases. "It was heartbreaking, and I realized I was getting involved too late in the process to do much good," she says. She then took a position as a consultant for technology transfer at Temple, where she honed her administrative skills.

When the directorship of the West Philadelphia Improvement Corps (WEPIC) opened up, however, Scott-Jones jumped at the opportunity. "I realized I wanted to work with people and with the community," she notes. Since WEPIC is one of the projects sponsored by the partnership, her eventual move to the parent organization was a step in the same direction of community involvement.

The West Philadelphia Partnership is an independent, nonprofit group of community organizations, institutions (including the University of Pennsylvania and Drexel University), individuals, and businesses committed to improving life in West Philadelphia. Sheldon Hackney, Penn's president, serves as chair of the partnership's board. Originally known as the West Philadelphia Corporation, the partnership was established in 1981.

Acting as a catalyst for the communities

Under the aegis of the partnership, the various members act as unbiased mediators in solving local problems and in helping to implement projects that benefit the community. "The partnership is unique because of its makeup," says Scott-Jones. "Because of our representation, we are able to act as a real catalyst on diverse projects, including education, housing, and economic development."

"The partnership has historically been very, very important to our neighborhood," notes David Hochman, president of the Spruce Hill Community Association. This group, a member of the partnership, is itself a nonprofit organization whose goal is to improve its segment of West Philadelphia through a variety of community activities. "We share their interest in improving the overall economic health of West Philadelphia, and we see the partnership as a concrete example of Penn's commitment to the area."

Scott-Jones cites two initiatives of the partnership, "Hire West Philadelphia" and "Buy West Philadelphia," both designed to increase the economic opportunities in the community, as examples of the type of work the group is doing. "We worked closely with the Chamber of Commerce on these projects," notes Scott-Jones. "We felt that they were a natural organization to join in this effort, as



A native West Philadelphian, Rae Scott-Jones has high hopes for the future of the Partnership.

they complemented the groups we already have."

Taking the broader view

Part of Scott-Jones's mission is to develop programs that address problems on a broad scale. "We have to look

at issues in a more comprehensive way," she says. "When you discuss education, you're also talking about job training and economic improvement. You can't just build a house, either, and think you've solved housing problems. Housing involves transportation and home maintenance and improvement skills.

"Communities and people are whole entities," she continues, "with a lot of diversity in them, and we try to use a multi-focus approach." In fact, West Philadelphia Partnership projects generally include counseling to help people cope with everyday problems, as well as programs geared toward education.

One of the prizes: WEPIC

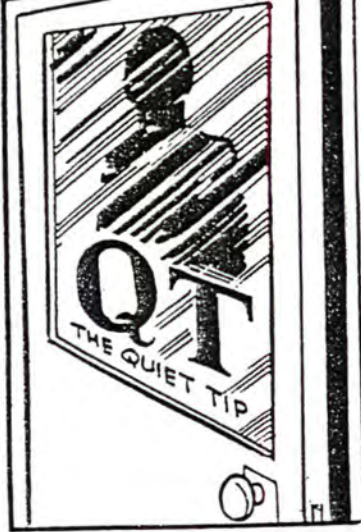
A particular source of pride for Scott-Jones is WEPIC, which she directed for six years before becoming director of the partnership. Begun in 1985, WEPIC emerged from an undergraduate seminar at the University that aimed to relate the academic experiences of Penn students to real-life situations. The program encourages students to go into the community, identify problems, and devise possible answers.

According to Scott-Jones, "WEPIC got started right after the MOVE incident, when community morale was really poor." The Penn students started with a program to beautify school buildings by removing the graffiti—and the project was a great success. "The community got excited, and WEPIC expanded," says Scott-Jones, noting that the program is now working in nine West Philadelphia schools.

Scott-Jones is quick to add that the schools invite WEPIC to join them, not the other way around. "We respond to initiatives from school teachers and administrators. The teachers determine the needs, and we assist in meeting them." So far, WEPIC's reception has been enthusiastic. The program has been involved in designing school gardens, rehabilitating the pipe organ of a high school, teaching photography, and building a greenhouse. As Scott-Jones puts it, "We want to use a hands-on approach to teach kids about their community and how to solve community problems."

In discussing the partnership, Scott-Jones conveys an air of competence, an impression not lost on those who work with her. "I am extremely impressed by Rae Scott-Jones and her determination to make the partnership work," says Stephen Carey, interim director of the University's Office of Community Relations. "I think big things are going to happen, because with her leadership, the potential for success is overwhelming."

Scott-Jones welcomes the challenge. "I come from West Philadelphia; I grew up here; my family still lives here," she says. "I am invested in the West Philadelphia community, and I want the partnership to be a tool for effecting positive change."



W. Phila. groups given more than \$16,000 in grants

By Kendall Wilson
Tribune staff

Mrs. J. Missing

During the recent Presidential Inaugural celebration the nation's leaders all trotted out their wives (and in some instances wives), sons, and grandsons, but Jesse Jackson's better half was conspicuously absent.

Washingtonians tell Q.T. that the last time anyone saw Mrs. J. was several months ago when a firearms violation took place on her street and she was briefly on local TV.

Meanwhile J.J. is buying Clinton time to develop a realistic U.S. policy regarding Haiti, which is long overdue, and important to our nation's self interest.

White House Security Tax!

A whole lot of folks without tickets crashed the White House Reception held by newly elected President Clinton . . . White House security used to check out the kids who attended the Easter Egg Hunt . . . What gives?

Open MLK Files Now . . .

The Martin Luther King Show on Ch. 29 opened the eyes of scores of young people who quickly pointed out that the records of the assassination investigation are sealed until 2025 and that by then all those involved will be dead and no one else will give a damn.

Drug War

Congrats to the valiant group of unsung heroes who have been conducting anti-drug demonstrations at 46th and Walnut streets on Saturday nights for quite some time, "Eternal vigilance is the price of liberty!" They deserve total community support.

Many neighborhood community groups have deservedly earned their share of praise and even plaques for jobs well done in the past, but rarely has that praise been accompanied by a check or two.

Now, however, five such groups broke that tradition Tuesday afternoon when they received Philadelphia Hope Grants totaling nearly \$17,000 during an awards ceremony hosted by the West Philadelphia Partnership (WPP). The grants were administered through the Greater Philadelphia Urban Affairs Coalition.

WPP's Resource and Information Center provided technical and grant writing assistance to these groups, resulting in the direct awarding of \$16,980 in grants, said WPP's Executive Director Rae Scott-Jones.

The real recipients of the grants will be neighborhood youth, with all funding going toward youth programs, said Jones.

The groups, their leaders, and the respective programs to be funded include:

- * Dunlap Community Citizens, Margaret Shepherd, varied youth programs;

- * Garden Court Community Association, Dr. Alice Moyer (Hazel Singleton accepted), summer swim league for local youth and area beautification projects;

- * West Powelton Concerned Community Council, Elsie Wise, drill team;

- * 18th Police District Mini-Station Advisory Board, Fred Mozena, construction of Tot-Lot at 45th and Sansom streets;

- * 16th Police District Advisory Council, Officer Brenda Robinson-Stowe, Mantua-area football league for 125 youths.

Jones said the grant awards are in keeping with WPP's mission to "enhance the quality of life in

West Philadelphia for everyone who lives and works here."

Jones, who was joined at the ceremony by representatives from the Greater Philadelphia Urban Affairs Coalition, the University of Pennsylvania, Drexel University, community leaders and neighborhood people, and a large contingent of police officers from the 16th and 18th districts, said the money arrived at a critical time for the groups.

"This West Powelton group (drill team) which had done so much for the community, had received no money whatsoever for all their years of service," she said. "This is their first money from outside that will help them with the uniforms and other operational expenses."

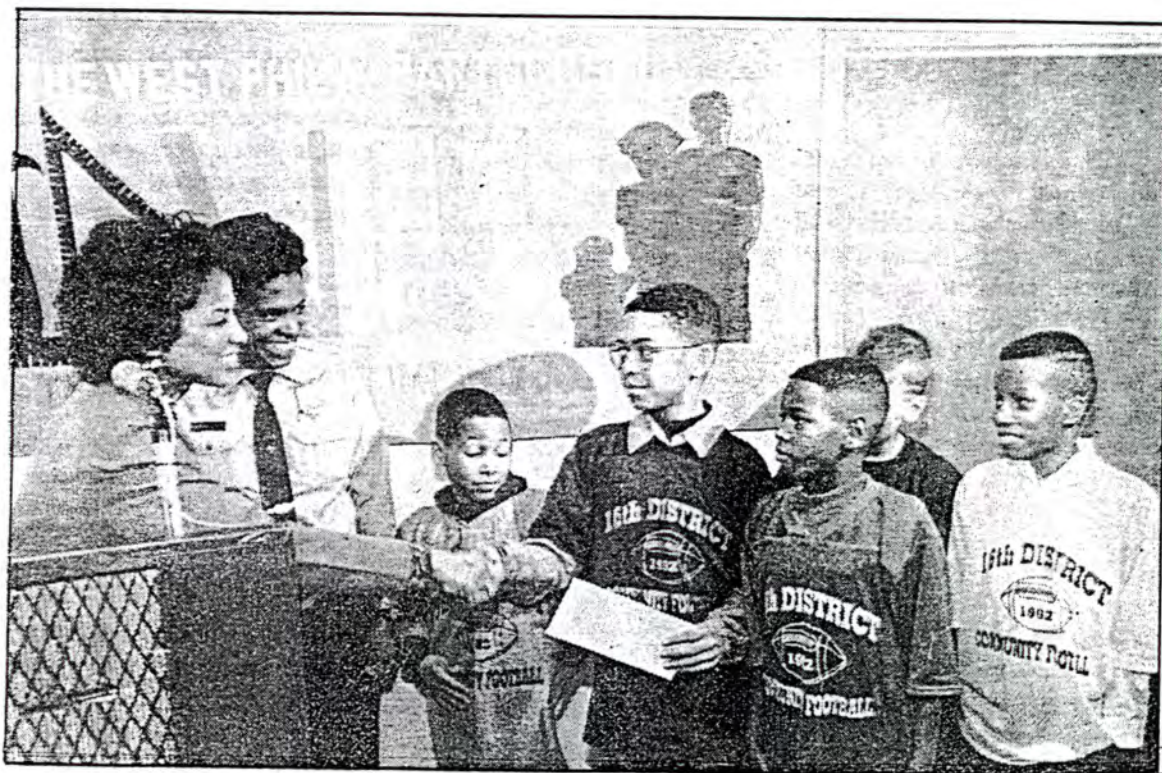
Police Officer Brenda Robinson-Stowe, who has dug deeply into her own pockets to keep her program going, said the grant to aid her football league came as a "gift from God."

"You get involved with these kids and see what great people they are developing into, you just can't cut them loose," said Stowe. "Yes, I went into my bank account last year for \$1,200 at one flap to keep things going. It hurt me financially, but helping and saving our kids made it worthwhile."

The West Philadelphia Partnership, which took that name in 1981 after being called the West Philadelphia Corporation (1959), is an independent, non-profit group of community organizations, institutions — including the University of Pennsylvania and Drexel University — individuals, and businesses committed to improving life in West Philadelphia.



Margaret Shepherd (center), president of Dunlap Community Citizens, accepts her group's funding grant from Rae Scott-Jones, executive director of the West Philadelphia Partnership (WPP), during an awards ceremony at WPP's 40th and Market streets headquarters, which was the site for a total of five groups receiving nearly \$17,000 in grants for youth programs. Joining Shepherd at the presentation is Dunlap's Neike King. — Paris Gray photo



Members of the 16th Police District's Community Football team accept a sizable check from West Philadelphia Partnership's Rae Scott-Jones (left), as Police Officer Brenda Robinson-Stowe, representing the 16th Police District Advisory Council, looks on with pleasure. The funds will sponsor the Mantua-area football league for 125 youths. — Paris Gray photo

Four community groups get help in expanding their services

By Kendall Wilson

Tribune staff

Four community development organizations — three in Philadelphia and one in Chester County — received more than a word of encouragement Friday.

Provident National Bank announced that its "Partners in Community Performance" program would grant some \$180,000 to the groups over the next three years.

Each group receives \$10,000 the first year, \$15,000 the second and \$20,000 the third. The awards were presented during a luncheon Friday at Provident headquarters in the Land Title Building at Broad and Chestnut streets.

The awardees include West Philadelphia Partnership (WPP), Frankford Group Ministry (FGM), 4500 North 20th Street Community Development Corporation, and the Housing Partnership of Chester County (HPCC).

The grants are intended to help community organizations meet their basic operating expenses. The grants also help reduce the time the organizations spend on fundraising and enables them to concentrate on their substantive goals of neighborhood revitalization.

"Provident is proud that it has made a commitment to reach these groups," said Donald C. Kelly, Provident's community reinvestment manager.

Community Development Corporations play a critical role in reviving deteriorating neighborhoods and they will probably become even more prominent and numerous as a result of support by the Clinton Administration.

"Since 1989, when the Partnership program began, 15 organizations have been able to greatly enhance their communities by developing and rehabilitating low-income housing, revitalizing districts, facilitating small business development and achieving other goals."

The four recipients were among 27 community organizations competing for the Partners grant this year. They were selected with the assistance of the Delaware Valley Community Reinvestment Fund, the Local Initiatives Support Corporation. Priority was given to smaller organizations poised to grow to a higher level of productivity and to the established groups for whom the grant would enable significant.

Last year's recipients were Frankford United Neighbors, Hunting Park Community Development Corporation and the Regional Council of Neighborhood Organizations.

West Philadelphia Partnership, at 3901 Market St., has worked for residential, educational and economic revitalization of the West Philadelphia community since 1959, when it was formed.

Now, headed by Rae Scott-Jones, executive director, WPP has renovated several buildings, including 6009 Osage Ave., 1018 S. 48th St., and the Firehouse Market at 50th Street and Baltimore Avenue. WPP also formed a Job Network and Referral Center and currently sponsors construction training classes at West Philadelphia High School.

Recently, WPP formed a subsidiary community development corporation to help local community organizations manage housing development projects and revitalization strategies. It will use its Partners grant to help develop the subsidiary CDC; acquire 12 sites in the Walnut Hill neighborhood; integrate local CDCs with other WPP resources and initiatives; and develop a five-year business plan.

"This money will help WPP get the core operating support we need to reach our objectives," said Scott-Jones. "We can hire a consultant and fiscal manager to fuel the projects and move forward. We see our CDC in a broader sense than economic development alone, but in the overall area of improving

■ The Philadelphia Tribune
 ■ Friday, December 25, 1992
 ■ Page 4-B

ship; rehab. 15 units of abandoned housing for lower income people and expand the organization's services to churches and senior citizens.

Mary Ellen Tamasy is executive director of the Housing Partnership of Chester County, formed in 1988. She said the organization will use its grant to build its housing development and counseling services for low and moderate income people in the county.

the area. We're really moving into the area of community and economic development and the grants serve as an affirmation of our efforts."

The 4500 North 20th Street CDC at 440 N. Broad St., headed by Marcel Harris, executive director, has rehabilitated seven properties in the Nicetown area in the last two years. Harris said 4500 CDC, founded in 1977, will use the grant to organize a Home Buyers Club to prepare people for home owner-

cation, social services and recreation. Next year, FGM will use the grant to hire a staff person to help carry out housing development projects and help the community implement the five-year plan.

"We feel fortunate and excited to receive the grants," said John Schol, executive director. "We're in the midst of constructing 28 new three-bedroom homes for low income residents and 52 unit apartments for senior citizens. We recently got 30 jobs for residents in

the quality of life here." Frankford Group Ministry, located at 4620 Griscom St., was founded in 1979 to enhance the quality of life in the Frankford neighborhood through organizing, advocacy, providing leadership on major issues, delivering social services and constructing needed facilities.

Its initiatives include a five-year revitalization plan that addresses housing, jobs, industry, the commercial district, transportation, edu-

Sheneen Wilson
West Phila. Improvement Corp.
3901 Market Street, Box 1961
Philadelphia, PA 19104-3133

WIAOP USA

Wendell Miller
75

Volume 32 - Number 22
Our 32nd Year Serving the Community

The Community People's Newspaper

1220 North Broad Street
Phila., PA • (215) 232-5974

lists in-
l Joan
eridian
edina,
Public
the ac-
n Milli-
d and
hiladel-
nber of
o Jack-
for the
of the
velop-
(BDA);
of the
lustrial
oration
'oulson
for the
t of the
ministra-
d Mont-

gram Officer for the new Pennsylvania Minority Business Development Authority (PMBDA) Guaranteed Loan program; and Joe Lowry also of Milligan.

The panelists each presented a range of financing alternatives currently available to minority- and women-owned businesses in Pennsylvania. The panelists then engaged the participants in discussion around case histories in determining what financing solutions might be applied to the given scenarios. As a final component, the panel presented the "how to's" of developing a successful banking relationship.

How to Register

register-
vember
ation is
r 5th,
ns who
rged to
ssible.
on, you
w Place
re Ave-
Garden
ie block

east of the Spring Garden stop on the Market-Frankford El. Office hours are 8:30 a.m. - 5:00 p.m., Monday through Friday. On the last day to register, Monday, October 5th, the office will be open from 8:30 a.m. to 12 midnight.

Further information may be obtained by calling (215) 686-1500 or 686-1505.

Community School Registration has an Enormous Turn-out

Despite the dreary rain on Saturday, over 1,000 people came out to register for the West Philadelphia Improvement Corps' third annual free Community School at the West Philadelphia High School. The anxious residents signed up for classes such as aerobics, African-American History, karate, arts and crafts, basketball, driver's education, advanced computer skills, building nutrition knowledge, community organizing, GED preparation, home maintenance and repair, how to be a better parent, how to buy a home, performing arts, photography, self-improvement, spritual parenting, getting a job in the 90's, and cookbook writing.

The most popular classes, driver's education and advanced computer skills, were the first to fill-up. It seems that many people know how to turn-on a computer, but do not know how to operate many of the computer's pro-

grams. Likewise, many individuals know how to drive, but do not know the fundamentals to pass the driving test. However, the following classes have openings; nutrition, community organizing, performing arts, GED preparation, photography, self-improvement, spritual parenting, getting a job in the 90's, Afro-American history, modern dance, math, personal financial planning, videography, West Phila., cooking, auto purchases and repair, home maintenance and repair, how to be a better parent, and storytelling.

The instructors and the residents within the West Philadelphia area are very proud and enthused about the program. Jeannette Connelly, teaches "How to Buy a Home", is not familiar with the area, but is just as proud of the program. She says, "The program will be a success, because it gives the people of the community a

chance to better themselves mentally and physically. This program will also give me an opportunity to learn more about the area, the housing in the area, and the peoples needs in housing".

Craig Harn, an adolescent of the West Philadelphia area, said, "The program is alright, I feel that I can learn a lot. It will keep me busy on Saturday's instead of loafing. I plan to learn more about our Afro-American history and the basics of driving."

The Community School program, funded through the Youth Opportunity Unlimited (Y.O.U.) grant, is designed to improve the lives of residents in the West Philadelphia area. The program is a collaborative effort between the Private Industry Council (PIC), the West Philadelphia Improvement Corps (WEPIC), and the School District of Philadelphia.

October, 1992

THE WEST PHILADELPHIA PARTNERSHIP

A consortium of educational/health care/scientific institutions, community organizations, residents and companies which seeks to revitalize residential and economic life in West Philadelphia.



WPP Community Development Corporation (WPPCDC)

Concept Paper

The Housing Subcommittee of the West Philadelphia Partnership proposes to create a Partnership Community Development Corporation. The Partnership CDC will act as a catalyst for community based housing development and improvement in West Philadelphia through coordination with community groups, existing CDCs, government, private funding sources, contractors, training providers, professionals, and concerned citizens by addressing the problems of affordable housing, vacancy and urban blight.

The Partnership CDC's role in community development will include the following components:

Fiscal Coordination- WPPCDC will act as the fiscal agent in partnership with smaller community based organizations and/or CDCs on specific projects. Given the Partnership's history of managing large public/private funds, WPPCDC will act in a fiduciary capacity to ensure proper usage of funds by providing legal, accounting and technical assistance as needed to complete each project.

Developer - WPPCDC will undertake rehabilitation projects in conjunction with community based organizations and/or CDCs.

Resource Center - provide existing CDCs in West Philadelphia and other community groups who wish to form a CDC with technical assistance ranging from proposal writing to financial planning to architectural drawings.

Referral Center - the CDC would serve as a referral center for architects and contractors interested in undertaking community development projects in West Philadelphia. Conversely, community groups would contact the WPP when searching for reliable contractors or other professional services to assist them with their projects.

Business Opportunity/Employment - an emphasis would be placed on development projects which improve employment opportunities for West Philadelphians. This strategy would include projects which offer training opportunities to area residents and/or employ West Philadelphia based contractors and other professionals.

Submitted by,

Housing Subcommittee Members:

Lois Bye
Kemel Dawkins
Queen Hinton
Alan Klein
Scott Lederman
Betty Twyman (Chairperson)

Project Staff:

Jermaine Brown
Michael P. Connelly
Rae Scott-Jones Esq.
Blane F. Stoddart

WEST PHILADELPHIA JOB NETWORK AND REFERRAL
CENTER (JNARC)
SEPTEMBER 1992

The West Philadelphia Partnership, in collaboration with the West Philadelphia Chamber of Commerce, and the West Philadelphia Economic Development Corporation (WPEDC) have established the West Philadelphia Job Network and Referral Center (JNARC) to facilitate the employment and training needs of local residents through the coordinated efforts of employers, community groups, training providers, social service providers, and other agencies. The objectives of the JNARC are:

1. Facilitate the employment and training of unemployed and underemployed West Philadelphia residents by making referrals through an already established network of employers, training providers and community-based organizations.
2. Identify employment and training needs of local employers in the Philadelphia metropolitan area. Act as a catalyst in the identification and placement of local employees in available positions.
3. Facilitate activities that will promote increased employment opportunities for residents, such as the West Philadelphia Job Fair.
4. Develop job-training programs that will prepare the under/unemployed to meet the needs of the WORKFORCE 2000 job market.



West Philadelphia Improvement Corps

3901 Market Street, Box 1961 • Philadelphia, PA 19104-3133 • 215-222-8680

GET TO KNOW WEPIC

The West Philadelphia Improvement Corps (**WEPIC**) is a program that is working toward the revitalization of the West Philadelphia community through local schools. WEPIC is currently involved with more than 10 public schools in West Philadelphia, including West Philadelphia High School, six middle schools, and three elementary schools. Now a program of the West Philadelphia Partnership, WEPIC continues to promote the use of schools as community resources. WEPIC's goal is to produce community schools that serve, educate, involve and activate all members of the community.

History

WEPIC was first created as a concept in a University of Pennsylvania undergraduate honors seminar, co-taught by President Sheldon Hackney and historians Lee Benson and Ira Harkavy. WEPIC began operations in the spring of 1985 as a summer youth corps program for middle school and high school students. It has since expanded to a year-round program which involves over 1,000 young people and their families. Over the years WEPIC has received national and international recognition and has been cited for its outstanding work by President Bush, Secretaries of Labor Ann McLaughlin and Elizabeth Dole, Deputy Secretary of Health and Human Services Constance Horner, Senator Harris Wofford, Congressman William Gray, and Governor Robert Casey.

Current Programs

During 1991 and 1992 WEPIC has coordinated numerous programs in its efforts to support the economic and cultural growth of West Philadelphia. The following are just a few examples of the projects which are currently being run by WEPIC:

Turner Middle School

- A Saturday Community School which offers free educational, recreational, and cultural classes for children and some adults in the community. Classes focus on arts and crafts, airplane modeling, math, dance, aerobics, creative writing, basketball, tennis, vegetarian cooking, African-American history, and swimming. These classes are taught by school teachers and community members.



- Wednesday Evening Adult Classes which offer educational and job skills classes. Activities include dance, math, aerobics, swimming, financial planning, sewing, cooking and nutrition, typing, and GED preparation.
- A School-Within-a-School for 110 sixth to eighth graders in which students focus on issues of nutrition, cancer, AIDS, injury prevention, and drug and alcohol abuse prevention.
- A health careers and work-based learning project that exposes Turner students to career opportunities in the health-care industry and provides them with hands-on job experiences with Misericordia Hospital and the Woodland Avenue Health Center.
- A Community Health Watch which provides screenings for community residents on hypertension, cancer, nutrition, oral health, and vision.

West Philadelphia High School

- A Wednesday Evening and Saturday Community School which offers free educational, recreational, and cultural classes for children and adults in the community. Classes offered include Aikido, African-American History, Personal Financial Planning, Dance, Computers, Tennis, Basketball, Cooking, and Arts and Crafts.
- An in-school construction class which teach high school students carpentry and construction skills under the guidance of union carpenters. Students will be learning skills in class which they will then apply to after-school work at various sites in the West Philadelphia area in partnership with community-based organizations.

Phil-a-Job

- The summer of 1992 saw an extremely successful WEPIC Phil-a-Job program. WEPIC coordinated 13 work sites, providing job opportunities for more than 230 West Philadelphia young people. This year's sites included:
 - Shaw Middle School
 - Sulzberger Middle School
 - Sayre Middle School
 - Lea Middle School
 - West Phila. High School
 - Turner Middle School
 - Multiple Sclerosis Society
 - People's Emergency Center
 - Peake's Day Care Center
 - Kingsessing Recreation Center
 - University City Arts League
 - West Phila. Econ. Dev. Corp.



West Philadelphia Improvement Corps

3901 Market Street, Box 1961 • Philadelphia, PA 19104-3133 • 215-222-8680

GET TO KNOW...

THE WEPIC CONSTRUCTION TECH PROGRAM!!

The West Philadelphia Improvement Corp (WEPIC) is a member of the West Philadelphia Partnership and operates several school-based community programs. The WEPIC Construction Tech program is an intensive training program for students of the West Philadelphia High School interested in bettering themselves and their community.

BEYOND THE NORM!!

INTENSIVE TRAINING

The program provides in-school instruction of the construction trades through a certified carpentry teacher and an experienced union carpenter. Taught in the new, state-of-the-art Hanson Street Training Facilities, Construction Tech emphasizes the most up to date techniques and skills under the direction of an experienced union carpenter.

COMMUNITY SERVICE

While students are being trained in a skill in the construction trades they also are taught the importance of community service. From in-class projects that are donated to on site improvement projects after school, students learn the fundamentals of service projects from conception to completion.

PAID APPRENTICESHIPS

After school and weekend paid apprenticeships are offered to all students enrolled in the Construction Tech program. Apprentices work on various community improvement projects under the supervision of a Union Carpenter. Completed projects include the renovation of a green house for Masterman School, the erection of a retaining wall at Barkan Park for the Department of Recreation, and the de-construction of an unsafe building structure at Turner Middle School. Current projects include table tennis tables for community centers, the renovation of a vacant house, and the building of "tot lots" for two Head Start facilities.

EMPLOYMENT READINESS TRAINING SEMINARS

Career training seminars covering such topics as resumes, interviewing, banking, taxes, job hunting, and entrepreneurship are held once a week by various speakers.

SKILL DEVELOPMENT SEMINARS

Hands on training seminars are being established with skilled tradespeople and manufacturers. Current training seminars include the flooring, cabinet, and textile industries.



BEYOND TRAINING!!

WEPIC continues its commitment to the students beyond intensive training. Through the help of private employers and skilled tradespeople, WEPIC works to provide smooth school-to-work-transitions so that the students may become an integral part of our working, caring, and giving community.

MENTORING

People from the construction trade are linked with students interested in a career in the field. Most students are from low-income single family homes and are in desperate need of role models.

FIELD TRIPS

Trips to various construction sites and carpentry shops are scheduled for the students of Construction Tech. Trips for the current semester include a tour of the construction of the Penn Law Center and the University Science Center Building

JOB NETWORKING

WEPIC makes all attempts possible to connect potential employers with trained apprentices. Part time, summer, and permanent employment is matched for qualified students and employers.

TRAINING COURSES

CONSTRUCTION TECH I - "Introduction To Construction Trades"

This survey course offers the opportunity for freshman and sophomore students to be introduced to the construction trades and community service.

CONSTRUCTION TECH II - "Rough Carpentry"

This hand-on instruction course will be taught in our new state-of-the-art facilities at the Hansom Street Training Facilities. Students will learn the fundamentals of "rough" carpentry by building "playhouses" for day care centers (Head Start, YMCA, Public Housing and other non-profits) in the West Philadelphia area.

CONSTRUCTION TECH III - "Finish Carpentry"

Students will move into finish carpentry and detail work. Various projects will be donated to the community and students will also complete "personal" projects.

Construction Tech IV - "Internship"

WEPIC will assist in placing students in half-day employment/learning opportunities. Additionally, students will be responsible for the conception and implementation of an independent community service project.

WANT TO KNOW MORE! CONTACT WEPIC'S ADMINISTRATIVE OFFICE 222-8680!

CONCEPT
West Philadelphia Partnership's Resource and Information
Center
Established October 1, 1992

The West Philadelphia Partnership's Resource and Information Center serves as a clearinghouse for information in West Philadelphia. The Resource Center has begun to aid community groups, researchers, institutions, and grant writers in gaining access to funding information by serving as a central location to access information relative to West Philadelphia. In addition, the Center will contain current request for proposals, from Federal, State and Local government sources, national grant indices, and a volunteer pool of grantwriters to aid in the empowerment of local "grassroots organizations" by teaching techniques in proposal writing and fundraising. Other information to be included in the Resource Center includes:

- Maps of West Philadelphia showing boundaries of various communities.
- Census tract information on West Philadelphia.
- Area Demographic information.
- Complete profile of community based organizations and geographic boundaries.
- Planning Commission reports relevant to area.
- Community Calender listing all major events in community.
- Computerized landscape depictions of West Philadelphia neighborhoods, showing sewage, drainage, creeks, and open spaces in each designated neighbourhood.
- Other relevant information.

Clinton Presidential Records Digital Records Marker

This is not a presidential record. This is used as an administrative marker by the William J. Clinton Presidential Library Staff.

This marker identifies the place of a publication.

Publications have not been scanned in their entirety for the purpose of digitization. To see the full publication please search online or visit the Clinton Presidential Library's Research Room.

PARTNERSHIP NEWS

Special Issue dedicated to the memory of Isadore Maximilian Martin (1909-1992)

3901 Market Street, Box 1948 Philadelphia, PA 19104 386-5757

FALL 1992

A consortium of individuals, community groups, businesses, educational, scientific and health care institutions seeking to revitalize educational, residential and economic life in West Philadelphia

The West Philadelphia Job Network and Referral Center is Launched



Dr. Ted Hershburg, Guest Speaker converses with Alice Crowell of the Science Center. In Background left to right: Daryl Fitzgerald, Jefferson Hospital; Ron Story, Univ of Penn.; Sheldon Rossi, JNARC, and Matt Larsen, JNARC Intern

The West Philadelphia Partnership has recently created the West Philadelphia Job Network and Referral Center (JNARC). The JNARC is an expansion of the "Hire West Philadelphia Campaign" which was originally designed to match job openings with neighborhood residents. A collaborative effort between the Partnership, the West Philadelphia Economic Development Corporation, and the West Philadelphia Chamber of Commerce, the JNARC seeks to address the problems of under/unemployment in the West Philadelphia community through referrals to possible employers, job training providers and other direct service providers.

An initial JNARC meeting was held on October 15, 1992 at the new Strothers Cafe located at 3801 Market Street. Over 25 major Philadelphia employers attended. According to Dr. Ted Hershberg, guest speaker, "U.S. youngsters lag behind every industrial nation in math, science and technical skills needed for the workplace entering the 21st century". Adds Sheldon Rossi, JNARC Manager, "the success of the JNARC lies in our ability to identify the needs of employers that are not being met, to aid and encourage job training programs that are tailored to fill the gaps in the workplace through coordination with the Private Industry Council, OIC, employers, and government, and on our ability to secure funding."

Community Development Corporation off to a Great Start!

The West Philadelphia Partnership has formed the *West Philadelphia Partnership Community Development Corporation (WPPCDC)*. According to Rae Scott-Jones, Executive Director, "We have recognized a need... where there are a number of community groups that want to do something about the housing in their area, but for many reasons have not been able to move forward... the WPPCDC will provide the technical assistance necessary that will immediately benefit these communities through completion of specific projects." Betty Twyman, President of the WPPCDC, adds, "We have been impressed with the supportive responses extended to the WPPCDC. As an arm of the West Philadelphia Partnership, the CDC can point to over 25 years of continuity of leadership. Acting as a facilitator, we look forward to working with CDC's and community groups in helping to make blocks whole again."

The WPPCDC will act as a catalyst in addressing the problems of unaffordable housing, vacancy and urban blight through coordination with existing CDC's, community based organizations, churches, government, public/private funders, and concerned citizens.

Continue on page 3

Message From The Executive Director

The Legacy of Community Service Left by Isadore Martin

Mr. "Max" Martin as he was referred to, was the first African-American member and among the first community representatives to join the Board of Directors of the West Philadelphia Partnership ("the Partnership"). He remained as an active member of the Board from its inception in 1959 until his recent death this past summer. During this time, Mr. Martin made significant contributions to the work of the Partnership as well as to numerous other organizations with which he was affiliated.

He was the President of Berean Savings Bank, the only minority managed, federally insured savings institution in Philadelphia, from 1970-1990. In this capacity, he was a

Continue on page 3

SAFETY & SECURITY

POLICE EMERGENCY NUMBER 911

12TH DISTRICT	686-3120
16TH DISTRICT	686-3160
18TH DISTRICT	686-3180
19TH DISTRICT	686-3190

WATER EMERGENCY	592-6300
GAS EMERGENCY	235-1212
ELECTRICAL EMERGENCY	841-4141
HEATING EMERGENCY	686-2590
POISON EMERGENCY	386-2100
FOOD EMERGENCY	686-4546
PHONE EMERGENCY	611

DRUG RELATED	
ANTI-DRUG/ANTI-VIOLENCE NETWORK	686-2121
MAYOR'S OFFICE ON DRUGS	686-3922

POLICE RELATED	
ACCIDENT INVESTIGATIONS	685-0069
AUTOMOBILE IMPOUND	923-8320
SUICIDE AND CRISIS INTERVENTION	686-4420
TOWNWATCH	564-6949

MINI-STATIONS

142 S. 44TH STREET	387-8866
50TH & BALTIMORE	724-6444
56TH & CHESTER	727-2540
58TH & WHITBY	729-3550
52ND & WESTMINSTER	878-3940

STATE POLICE	560-6200
STATE LIQUOR ENFORCEMENT	560-4111

HOSPITALS

HOSPITAL OF THE UNIV. OF PENN	662-4000
MISERICORDIA HOSPITAL	748-9000
CHILDREN'S HOSPITAL	596-9100
PRESBYTERIAN HOSPITAL	662-8000
VETERAN'S ADMINISTRATION HOSPITAL	823-5800
OSTEOPATHIC HOSPITAL	871-1000
INSTITUTE OF PENN. HOSPITAL	471-2000
CHILDREN'S SEASHORE HOUSE	895-3600

funding provided by
THE MERCY HEALTH PLAN
and
PROVIDENT NATIONAL BANK

Printed by University Copy Service • (215) 898-5320

SAFETY & SECURITY DIRECTORY

SAFETY

*DON'T LEAVE HOME
WITHOUT IT*

Presented by

THE WEST PHILADELPHIA PARTNERSHIP'S
TASK FORCE ON
SAFETY AND SECURITY

in cooperation with

THE 18TH POLICE DISTRICT
ADVISORY COUNCIL

CITY of PHILADELPHIA

MAYOR EDWARD RENDELL 686-2181
 INFORMATION 686-2250
 COMPLAINTS 686-3000
 LITERACY 686-8652
 DRUG TASK FORCE 597-9530
 COMMUNITY SERVICES 823-7170

HEALTH & HUMAN SERVICES

CITY HEALTH DEPT. 875-5691
 MEDICAL EXAMINERS 823-7457
 SENIOR CITIZEN (SARA) 765-9040
 DISABLED 686-2798
 CHILDREN AND YOUTH 686-6100
 CHILD ABUSE 831-8877
 SUICIDE CRISIS CENTER 686-4420
 HOMELESS SHELTER INFORMATION 686-7150
 DRUG & ALCOHOL CTR. 592-5403
 PA S.P.C.A. ANIMAL ABUSE 426-6300
 A.A. 545-4023
 A.I.D.S. 985-2437
 CENTER FOR LITERACY 474-1235
 VOTER REGISTRATIONS FORMS 686-1500

HUMAN RELATIONS COMMISSION

INFORMATION 686-4692
 EMERGENCIES 686-5665

DISTRICT ATTORNEY INFORMATION

686-8000

LICENSES AND INSPECTION

L & I COMPLAINTS 686-2463
 L & I CRISIS HOTLINE 686-2490

STREETS DEPARTMENT

COMPLAINTS 875-5900
 BLOCK SEWERS 875-6300
 STREET REPAIR 686-5508
 SANITATION 686-5560
 STREET LIGHTS/SIGNS 686-5530
 RECYCLING 686-1776
 PHILA. MORE BEAUTIFUL 978-3969

COMMONWEALTH of PENNSYLVANIA

GOVERNOR ROBERT P. CASEY 800-932-0784

BUREAU OF NARCOTICS 937-1300
 STATE UNEMPLOYMENT OFFICE 560-3974

LIQUOR CONTROL BOARD
 HARRISBURG LIC. OFFICE 717-787-6728

LICENSE ISSUES 717-787-3885
 SPECIAL DRUG UNIT 560-6263

PA BOARD OF PROBATION & PAROLE 560-3780
 COUNTY ASSISTANCE OFFICE 560-3700/01

SCHOOL DISTRICT of PHILADELPHIA

SOUTHWEST REGIONAL OFFICE 823-8200
 SECURITY 875-3611
 HOME & SCHOOL VISITORS 823-5700
 SCHOOL DISTRICT DRUG HOTLINE 875-DRUG

COLLEGES & UNIVERSITIES

UNIVERSITY OF PENNSYLVANIA
 INFORMATION 898-5000
 24 HR. CAMPUS SECURITY 898-7297

DREXEL UNIVERSITY
 INFORMATION 895-2000
 24 HR. CAMPUS SECURITY 895-2822

PHILA. COLLEGE OF PHARMACY & SCIENCE
 INFORMATION 596-8800
 24 HR. CAMPUS SECURITY 596-8938

COMMUNITY COLLEGE OF PHILADELPHIA
 INFORMATION 764-1050
 CHENEY STATE *
 INFORMATION 399-2000

PENN STATE *
 INFORMATION 560-4150

LINCOLN UNIVERSITY *
 INFORMATION 476-6666

* LOCATED AT THE URBAN EDUCATION FOUNDATION
 4601 MARKET STREET
 24 HR. CAMPUS SECURITY 476-4003