

PHOTOCOPY
PRESERVATION

file Wash, DC

Music Museum

PM-Mrs. Clinton-Agenda, Bjt, 770

First lady focuses her pro-child campaign on nation's capital

AP Photo WX101

By RON FOURNIER= Associated Press Writer=

WASHINGTON (AP) John Word slowly unfolded himself from the conference room chair, stood before Hillary Rodham Clinton and said in a soft, hesitant voice, "Please, Mrs. Clinton, thank your husband for me."

Word, principal of Garnet-Patterson Middle School in Washington, told the first lady that President Clinton ordered federal agents to sweep the school neighborhood free of drug dealers after one of his students complained at a White House event. "Overnight, it made a difference," he said.

Standing stiffly behind the lectern, her hands gripping its edges, Mrs. Clinton politely accepted the thank-you but had a word with Word: It is unbelievably frustrating, she said, "that the young woman had to go to the president of the United States to stop having to go to school past open-air drug markets."

Without mentioning names or offending the principal, the first lady managed to turn the principal's compliment into an upbraiding of local bureaucrats and school officials who do not do enough to protect children. She urged school officials in Washington and across the country to "put safety of children first."

While the July 1 exchange was uncharacteristically blunt, it typified Mrs. Clinton's second-term strategy: increase appearances in her current hometown to spotlight her national agenda.

Just blocks from the White House are some of the nation's poorest citizens, most dangerous streets and weakest schools a laboratory of social ills for a public figure promoting her views on education, crime, economics and the responsibility she says people have to improve the lives of others.

In recent months, Mrs. Clinton:

Visited an elementary school to urge charitable foundations and corporations to help pay for safe-haven learning centers that keep kids off the streets after class.

Told high school students and their teachers that her visits to District of Columbia schools reveal "the best and worst" in American education. "What bothers me and frustrates me is that when we know what works ... why don't we do that in every single school in the city?" she said.

Told business leaders that despite all the negative attention, "this is a unique place to live, work and do business." She urged them to support programs that gives small loans to fledgling entrepreneurs.

Urged lawyers to "adopt" local schools, improving the reputation of their profession and the quality of education. "Washington, D.C. ... is full of lawyers," she said, drawing laughs from fellow attorneys.

Visited a local hospital to promote a new program that gets pediatricians to prescribe books to youngsters along with medicine. If the program succeeds, "it could make a significant difference in this city and in every city around the country," she said.

Mrs. Clinton hopes her appearances will help improve conditions in Washington and highlight her national agenda.

"My original intent in becoming involved in the District of Columbia when I moved here was to get to know D.C. and help where I could," she said in a brief telephone interview. "But it became clear that a lot of these issues affecting the district are common issues affecting cities around the country."

In May, she conducted an emotional conversation with abused girls from a local youth home. Tenth-grader Ivelina Benitez, who lives in a single-parent home and helps raise her two younger siblings, asked: "Mrs. Clinton, were you raised in a home with two parents? Did you have siblings? Did you have to take care of them?"

Yes. Yes. And no, the first lady replied.

"It has changed a lot" since Mrs. Clinton's childhood, the girl said.

file DC

"I think we carry so much. Before you never heard of a single-parent home. Everyone has their mother, their father, their cat and their dog."

Mrs. Clinton agreed that too many children carry too large a burden, and some parents do not do enough. But she told the girl that the problem is as old as time. "I pointed out that my own mother came from teen-age parents who were not responsible enough," she said in the interview.

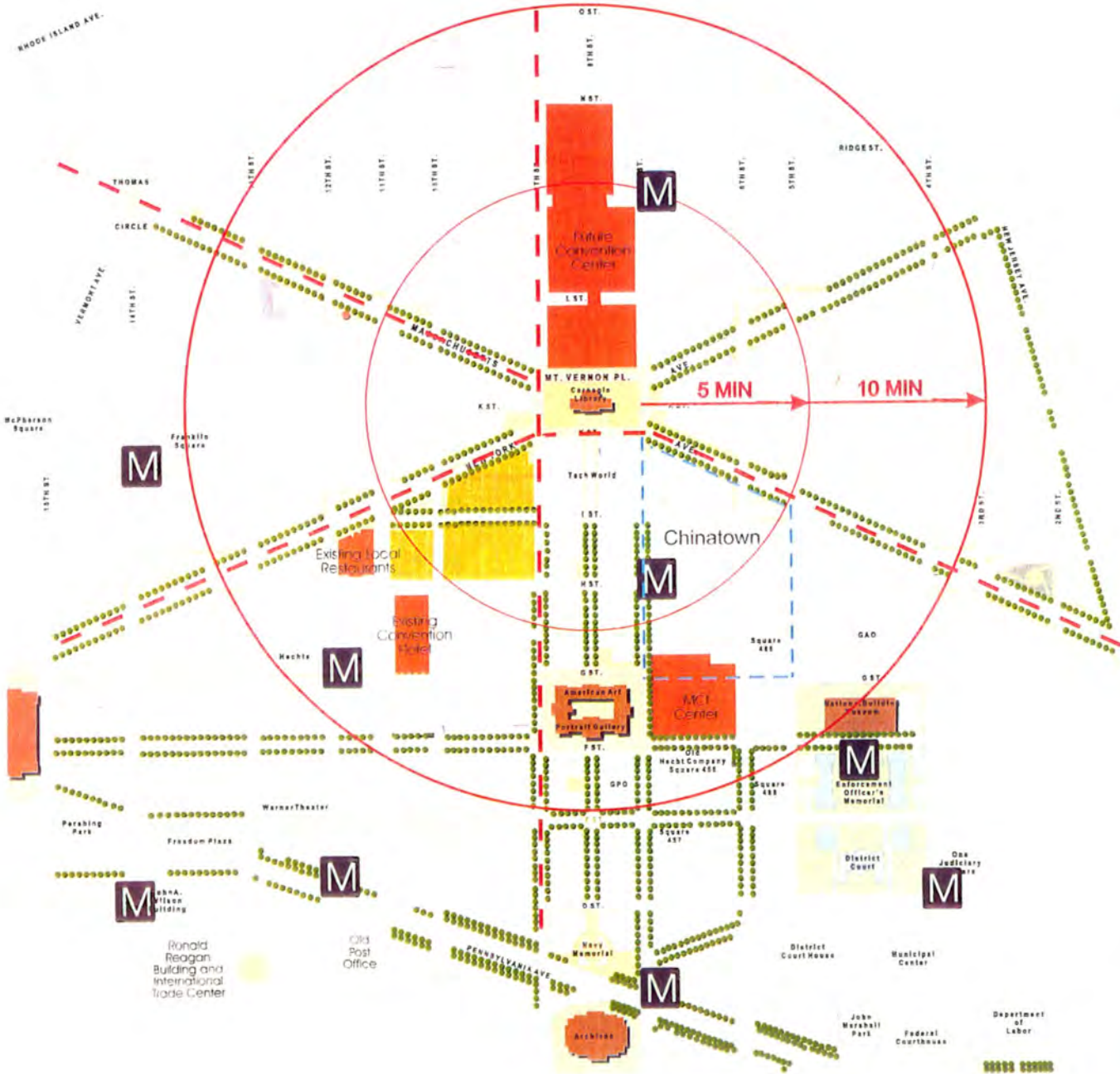
Her lesson for Ivelina, and for other young people like her: "Everyone eventually has to take responsibility for their own life."

"I feel very sorry for the position I know a lot of children find themselves in," she said, "but ultimately a lot of people triumph over their situations" because somebody in their life cares "or they just find it within themselves to make it happen."

**** filed by:APE(--) on 08/11/97 at 01:20EDT ****
**** printed by:WHPR(SCOH) on 08/11/97 at 10:53EDT ****

SITE ANALYSIS

CIRCULATION



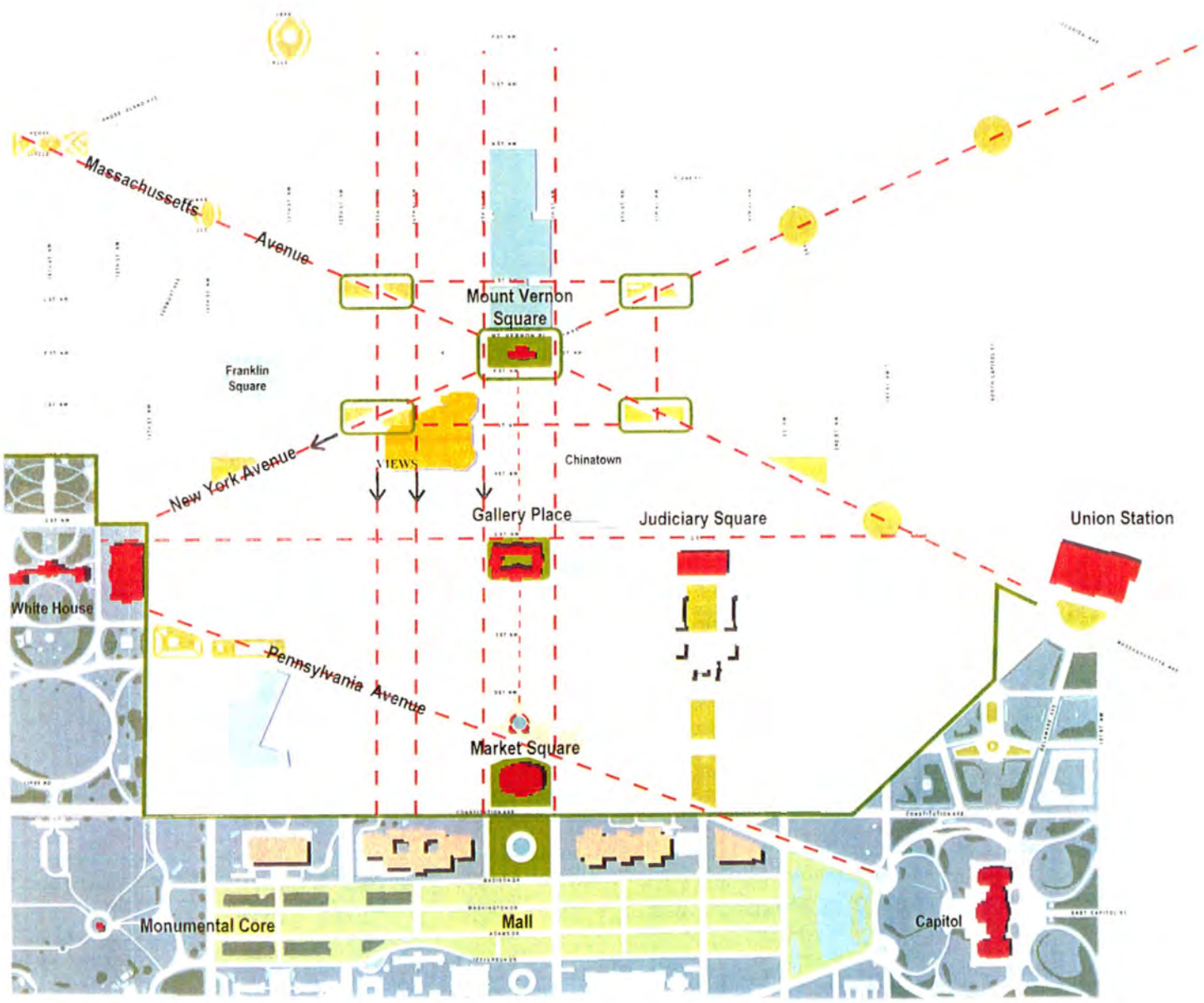
- Public Open Space
- Historical Landmarks
- NMMC Site
- Local Landmarks

NATIONAL MUSIC MUSEUM AND CENTER

KCF-SHG LEO A DALY

SITE ANALYSIS

GEOMETRY AND VIEWS



LEGEND

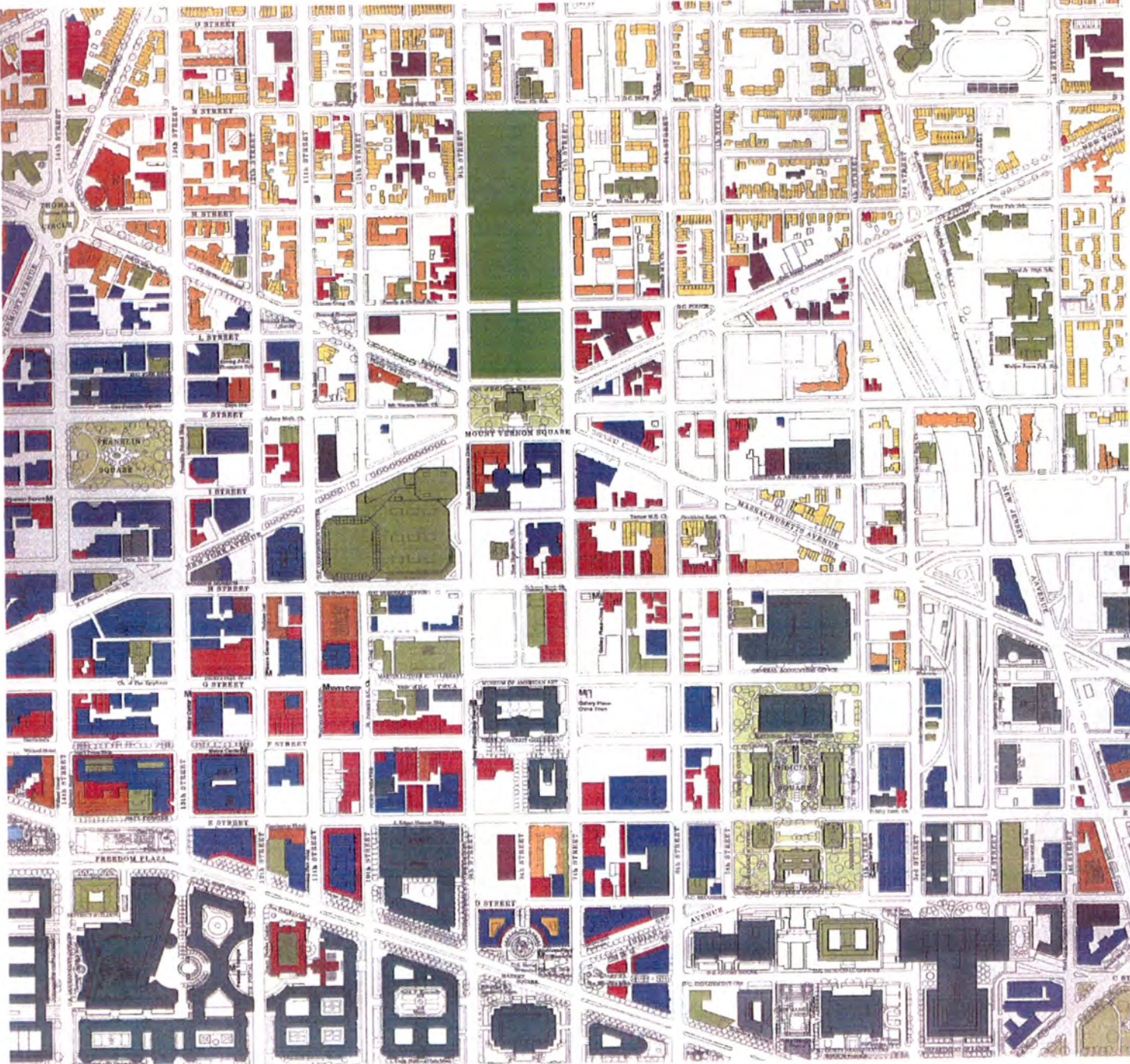
- Landmark Buildings
- Visual Axis
- Major Axis
- Public Open Space
- Bowtie Parks

NATIONAL MUSIC MUSEUM AND CENTER

KCF-SHG LEO A DALY

SITE ANALYSIS

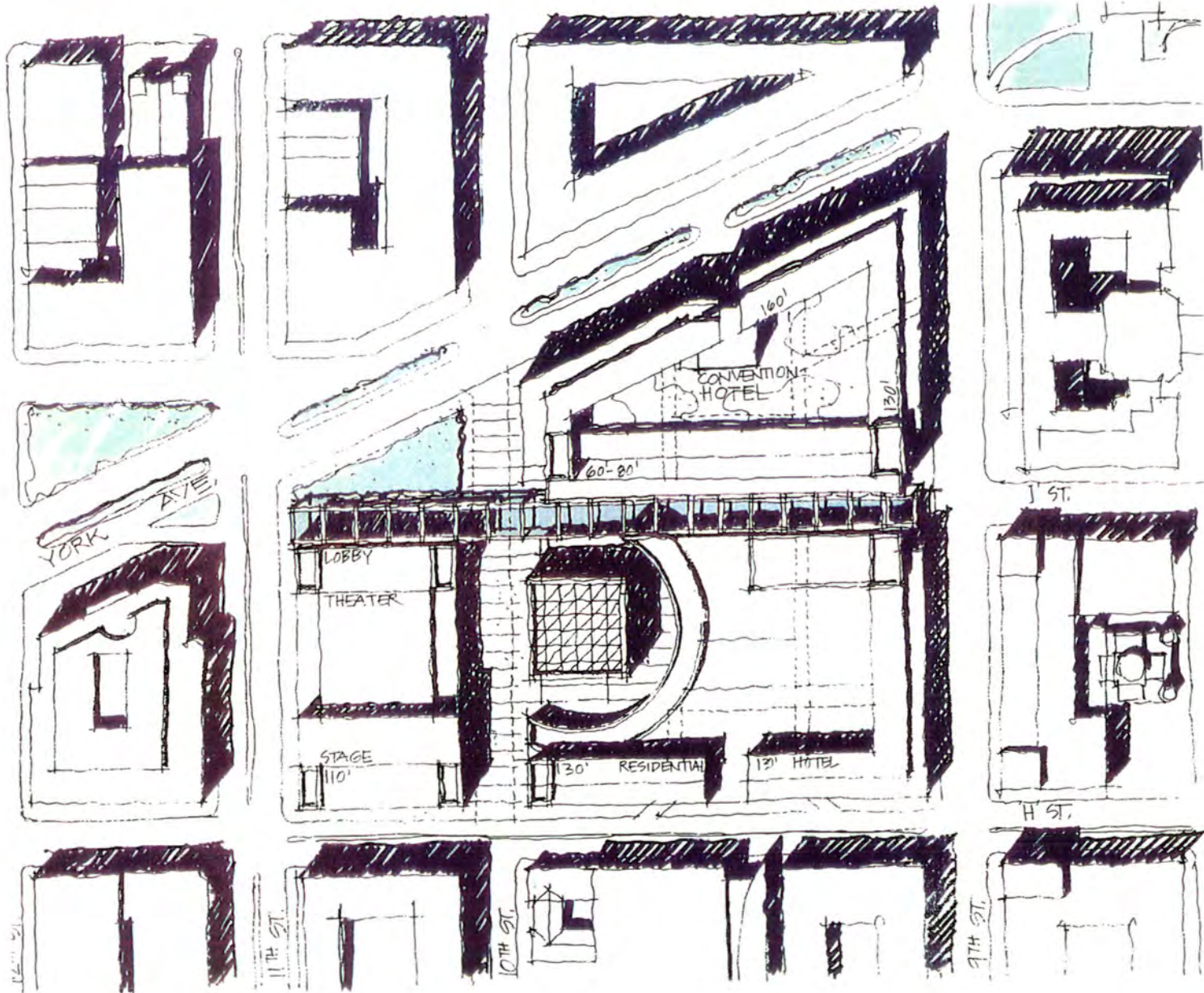
LAND USE



- RETAIL ESTABLISHMENTS
- RESIDENCES
- HOTELS
- ELEVATOR APARTMENTS
- FEDERAL INSTITUTIONS
- OTHER INSTITUTIONS
- INDUSTRY & WAREHOUSE
- TRANSPORTATION
- PRIVATE OFFICES

NATIONAL MUSIC
MUSEUM AND CENTER

KCF-SHG LEO A DALY

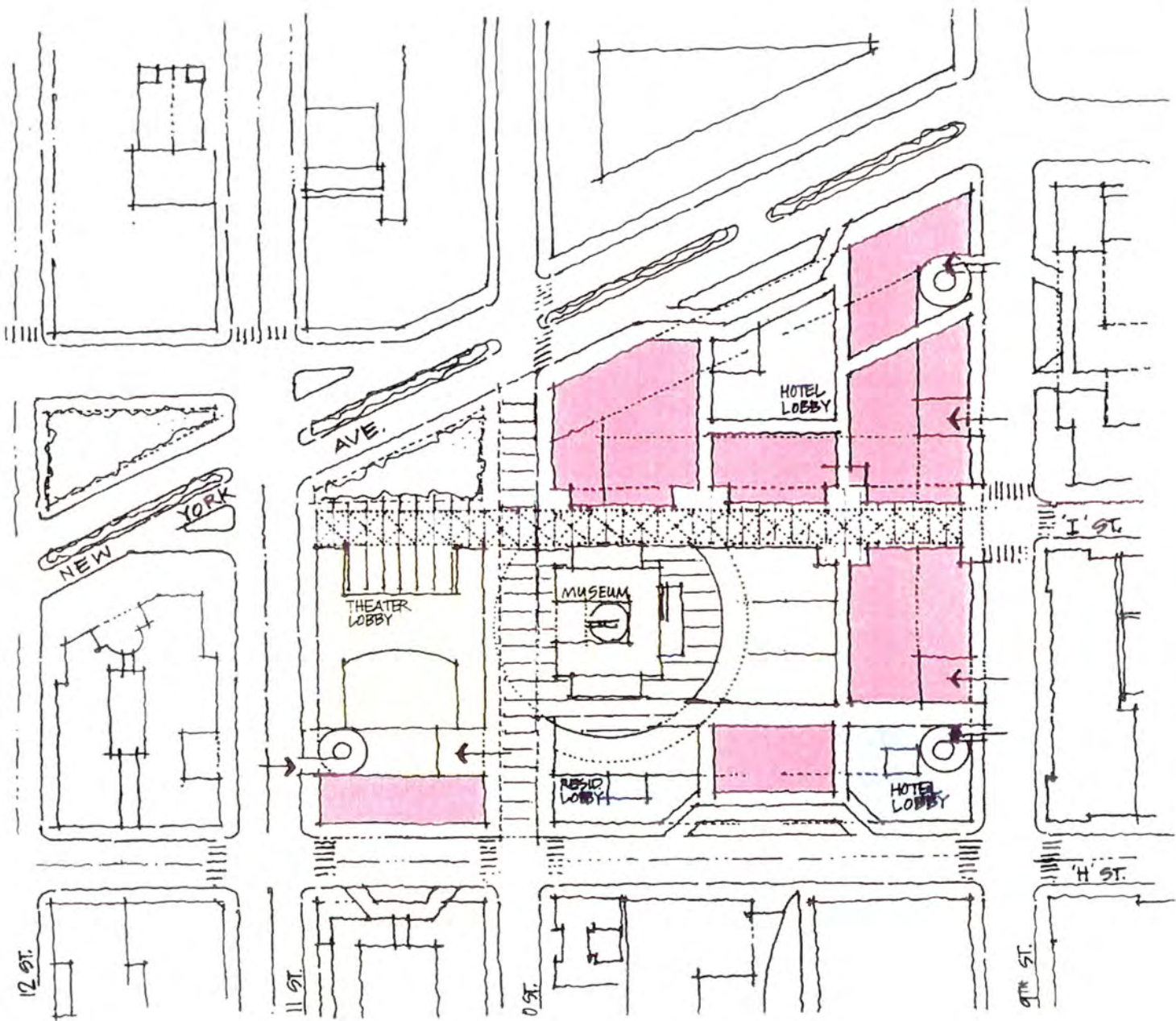


URBAN DESIGN
CONDITIONS

SCHEME A
SITE PLAN

NATIONAL MUSIC
MUSEUM AND CENTER

KCF-SHG LEO A DALY



URBAN DESIGN
CONDITIONS

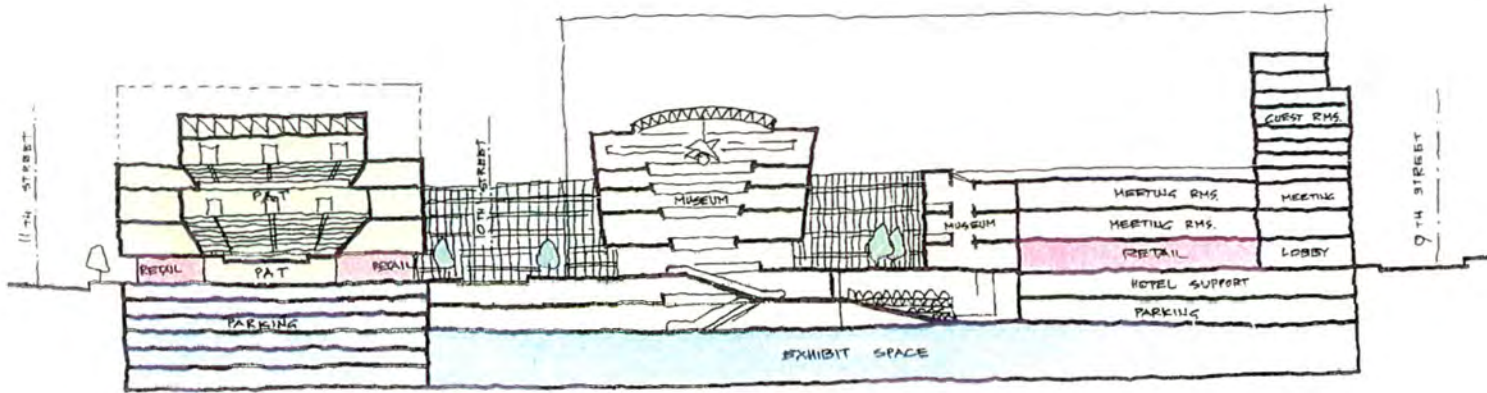
SCHEME A
GROUND FLOOR PLAN

NATIONAL MUSIC
MUSEUM AND CENTER

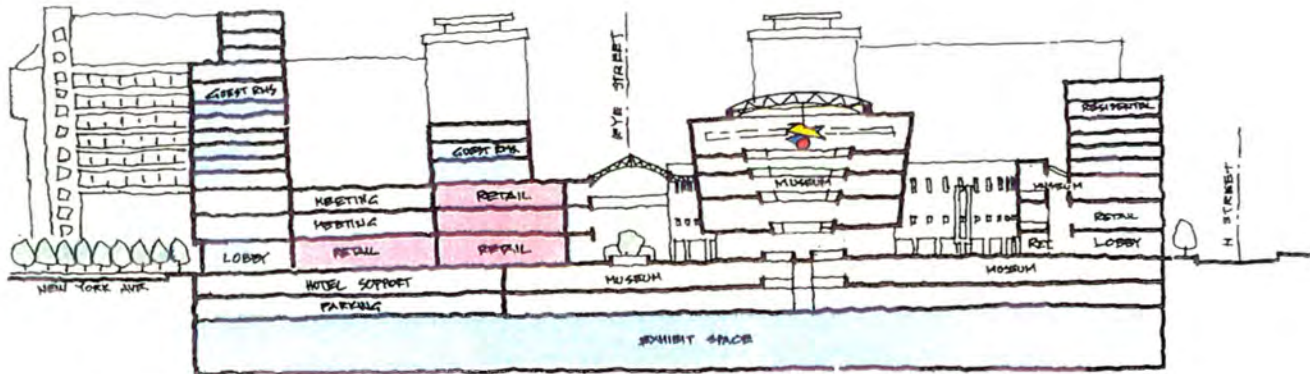
KCF-SHG LEO A DALY

URBAN DESIGN
CONDITIONS

SCHEME A



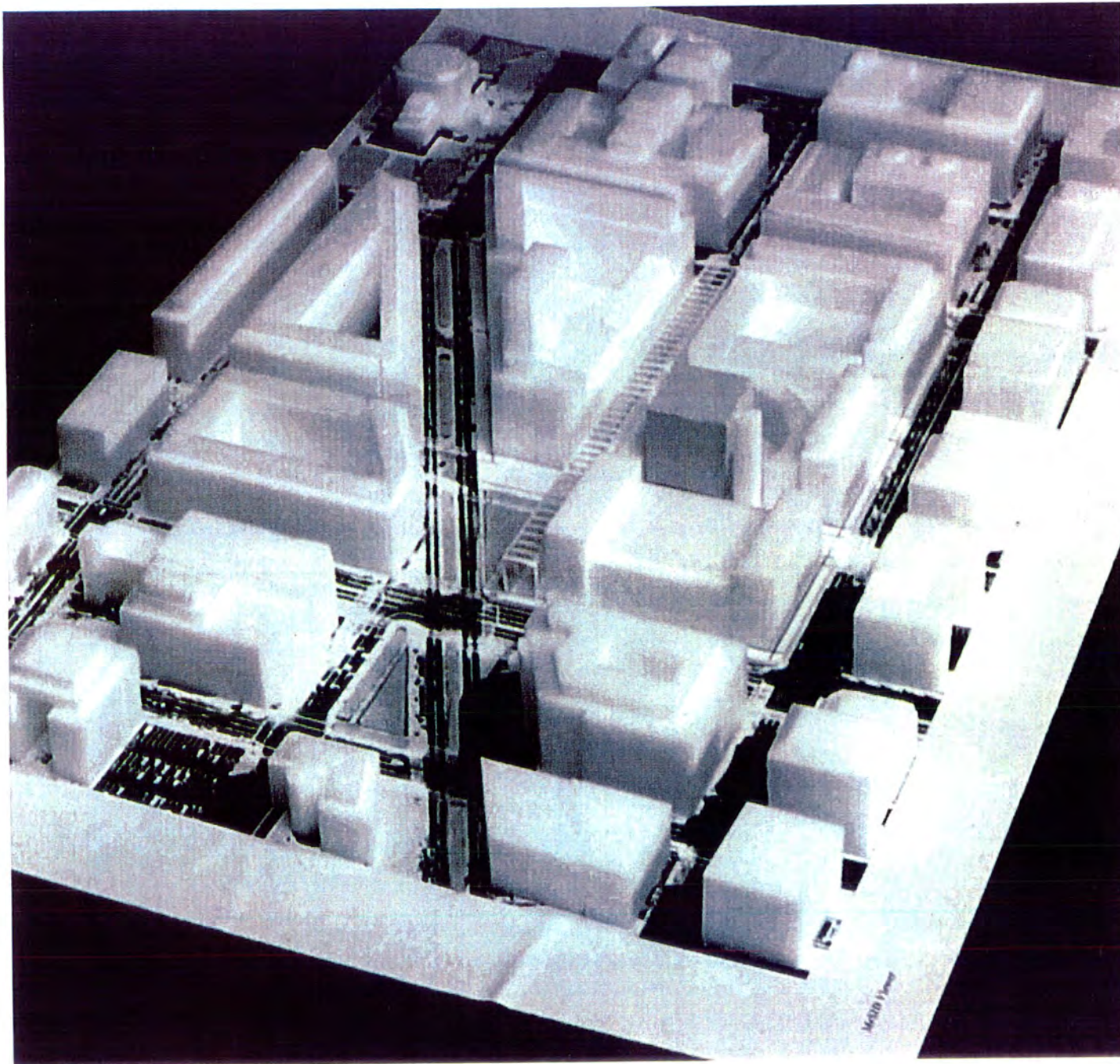
SECTION LOOKING NORTH



SECTION LOOKING EAST

NATIONAL MUSIC
MUSEUM AND CENTER

KCF-SHG LEO A DALY



MODEL
SCHEME A

NATIONAL MUSIC
MUSEUM AND CENTER

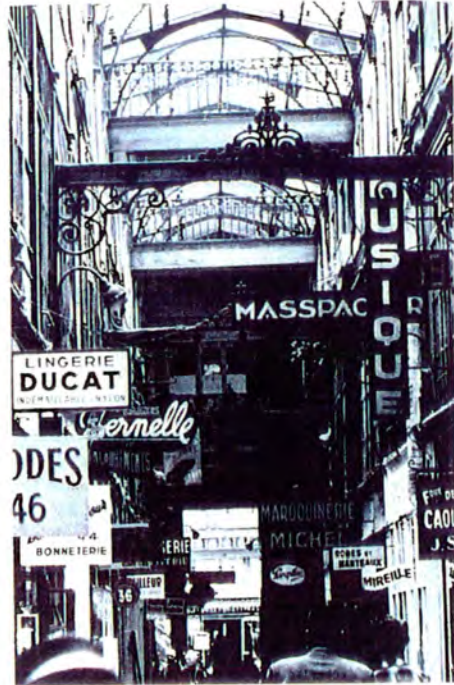
KCF-SHG LEO A DALY

RENDERINGS

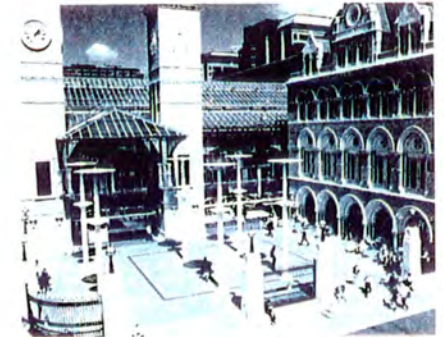


NATIONAL MUSIC
MUSEUM AND CENTER

KCF-SHG LEO A DALY



IMAGES



NATIONAL MUSIC MUSEUM AND CENTER

KCF-SHG LEO A DAILY